

Woodstock STOCK ORDER 1 2025

Transfer Switch Details

#1	ATS	AMPS: 1200	QTY: 1
Product	: Series 300	Catalog Number	: H03AUSB31200CGXM
Service Voltage / Hz	: 208V/60Hz	Optional Accessories	: 11BE,44G
Bypass Isolation	: Not Applicable	Product Description	: 300 Series, Automatic Service Entrance Transfer Switch
No. of Switched Poles: 4	: 4	Neutral Configuration	: Switched [B]
Withstand Rating:	: See WCR Table Below	No. of Cables & Lug Size	: See Applicable Outline Drawing
Frame = H, Switch Rating = 1200, Series = 300			
Enclosure	: 3R(M)-UL Type 3R secure double door enclosure (See Disclaimer 3)	Service	: Three Phase, 4-wire
Extended Warranty	: Not Included	Markings	:

#	ACCESSORY DESCRIPTIONS	
	Accessory Code	Description
1	11BE	Adds the following features to the Group G controller: (1) Serial RS-485 Modbus Communications (2) Multi-Schedule Engine Exerciser (3) a 300 Entry Event Log and (4) a common alarm output function. When applied on 3-phase systems it also enables: (1) 3- Phase Emergency Source VLL sensing (2) Phase Rotation Monitoring (3) Emergency Source VLL Unbalance Monitoring.
2	44G	Strip heater w/ thermostat, wired to load terminals: 208-600 volts
3	119M1	Internally powered Energy Reducing Maintenance Switch (ERMS) ERMS lowers the instantaneous pickup setting, utilizes a faster acting instantaneous trip function, or activates an alternate set of trip settings on a breaker to provide reduced arc flash incident energy. To be used on service entrance rated switches containing Square D breakers with MicroLogic 5.0/6.0 P/H trip units Customer is responsible for all trip unit settings.

GENERAL NOTES

- FLOOR MOUNTED ENCLOSURE
TYPE 3R CONSTRUCTED FROM CODE GAUGE STEEL.
FINISH: TYPE 3R, ANSI 61 GRAY POLYESTER SEMI GLOSS ELECTROSTATIC POWDER.
TYPE 3RX EXTERIOR CONSTRUCTED FROM CODE GAUGE STAINLESS STEEL.
(R) EXTERIOR CONSTRUCTED FROM TYPE 304 STAINLESS STEEL.
(S) EXTERIOR CONSTRUCTED FROM TYPE 316 STAINLESS STEEL.
- EXTERIOR DOORS HAVE PADLOCKABLE HANDLES WITH 3-POINT LATCH
DESIGNED FOR FRONT & REAR ACCESS.
- RECOMMENDED CLEARANCES: FRONT: 36" REAR: 30"
- EXTERIOR VENTS ARE SUPPLIED WITH POLYESTER DUST FILTERS.
AND TORQUE BOLTS TO 45 FT LBS BEFORE USE. REFER TO ANSIBEMA P9.2.1 FOR PROPER
HANDLING OF EQUIPMENT. AFTER INSTALLATION OF SECTION, REMOVE LIFTING PLATES. REINSTALL
BOLTS INTO EXTERIOR HOLES AND TORQUE TO APPROXIMATELY 20 FT LBS.
- EXTERIOR VENTS:
1000A: NO VENTS
1200A: VENTS ARE SUPPLIED WITH POLYESTER DUST FILTERS.
- CENTER OF GRAVITY
- APPROXIMATE WEIGHT: 2050 lbs

SYSTEM NOTES

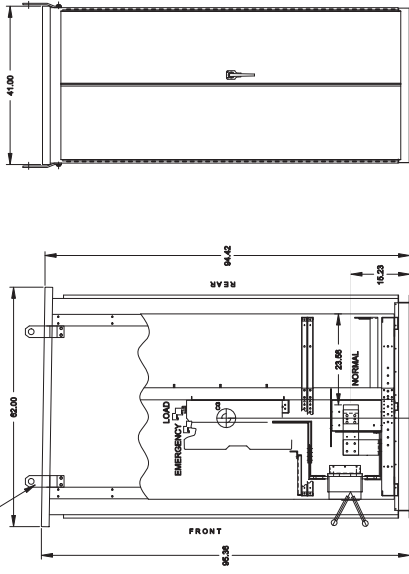
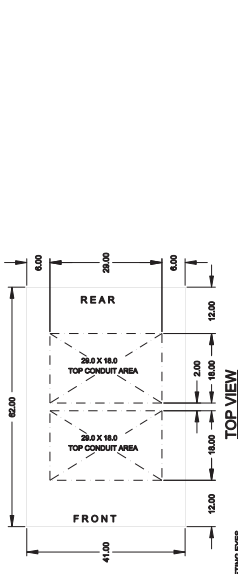
- SYSTEM RATING: 1000 AMPS, 1200 AMPS.
SHORT CIRCUIT RATING: 50,000 RMS SYM @ 480V.
THE EMERGENCY SOURCE MUST BE PROTECTED BY A REMOTE OVERCURRENT
PROTECTION DEVICE AS LISTED ON THE MARKINGS ON THE TRANSFER SWITCH.
 - ALL BUSES IS SILVER-PLATED COPPER BASED ON 1000A PER SQ. IN. DENSITY.
 - GROUNDING: 20K RATED.
 - NEUTRAL: 100% RATED.
 - APPLICABLE LABELS: U.L. 891, SUITABLE ONLY FOR USE AS SERVICE EQUIPMENT.
- TRANSFER SWITCH**
- H FRAME AUTOMATIC TRANSFER SWITCH 1000A - 1200A.
 - TRANSFER SWITCH RATING: 1000 AMPS, 1200 AMPS.
SHORT CIRCUIT RATING WHEN PROTECTED BY A CIRCUIT BREAKER
AS LISTED ON THE MARKINGS ON THE TRANSFER SWITCH @ 480V.
SPECIFIC BREAKER RATING: 65,000 RMS SYM @ 480V.
 - A FULL RATED NEUTRAL CONNECTION FOR EACH SOURCE AND THE LOAD IS OPTIONAL.
WHEN PROVIDED IT IS IN ONE OF THE FOLLOWING FORMATS:
A. SOLID NEUTRAL
B. SWITCHED NEUTRAL POLE
C. OVERLAPPING NEUTRAL POLE
4. U.L. 1008

TERMINATIONS 1000A-1200A

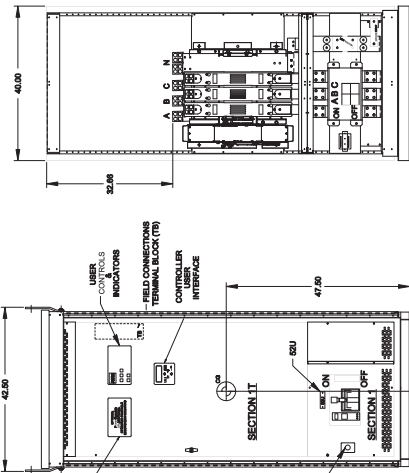
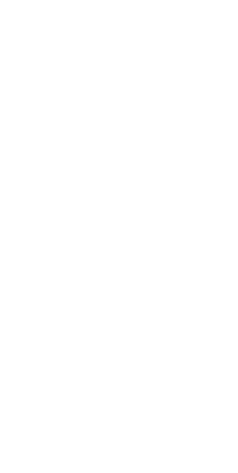
- SUPPLIED WITH MECHANICAL (SCREW TYPE) LUGS FOR CUAL CABLE.
NORMAL: (4) 1/4" - 600MCM PER PHASE & NEUTRAL
LOAD: (4) 1/4" - 600MCM PER PHASE & NEUTRAL
EMERGENCY: (4) 1/4" - 600MCM PER PHASE & NEUTRAL
OPTIONAL: (4) 1/4" - 600MCM PER PHASE & NEUTRAL
A. SUITABLE BENDING SPACE IS PROVIDED AS PER NEC.
2. OPTIONAL LUGS MAY BE SUPPLIED.

CIRCUIT BREAKER: ITEM 52U

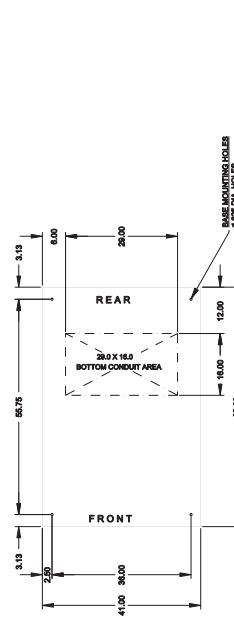
- SQUARE "D" 90% RATED TYPE "RUF", 3000AF/1000AT, 3000AF/1200AT,
STATIONARY MOUNTED, MANUALLY OPERATED,
WITH LONG DELAY, SHORT DELAY, INSTANTANEOUS, AND GROUND FAULT TRIP SETTINGS.
SHORT CIRCUIT RATING AS SHOWN RMS SYM @ 480V.
2. OPTIONAL ENERGY REDUCTION MAINTENANCE SETTING MAY BE SUPPLIED.
- OPTIONAL 100% RATED
4. U.L. 489



FRONT & REAR VIEW

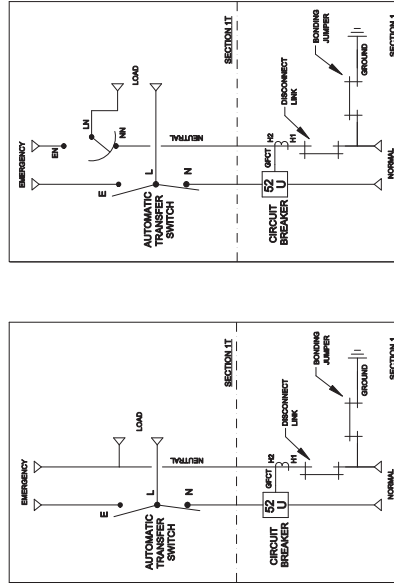


FRONT VIEW WITHOUT COVER



PLAN VIEW

ONE LINE DIAGRAMS



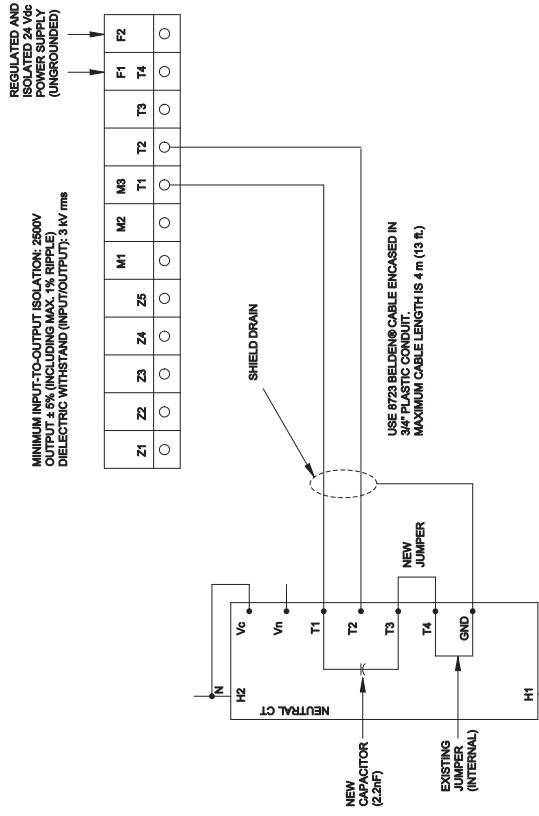
(WITH SWITCHED/OVERLAPPING NEUTRAL)

(WITH SOLID NEUTRAL)

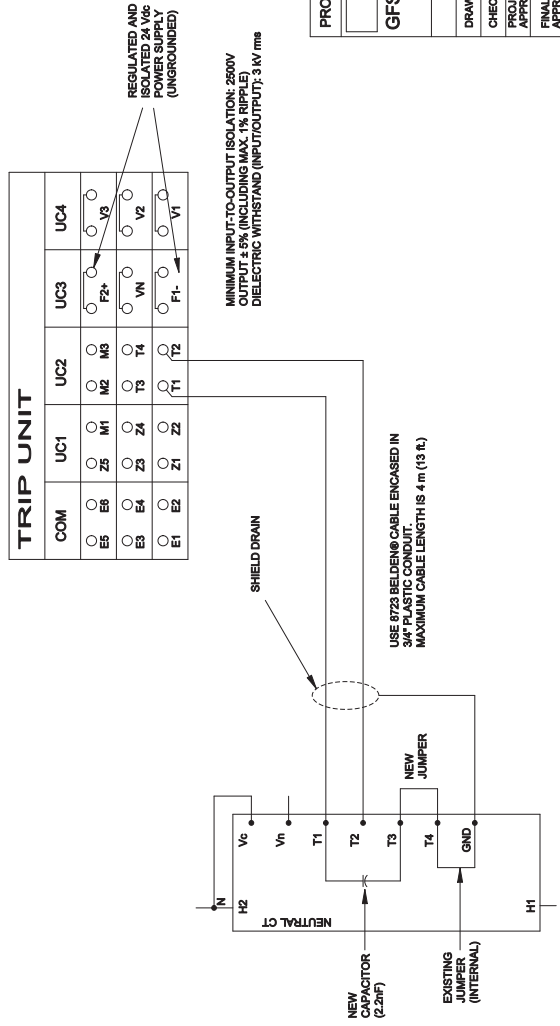
REV	DATE	BY	CHK	APP	DESCRIPTION
F	08/11/15	SM	SM	SM	REVISED FOR 1000A/1200A
E	08/11/15	SM	SM	SM	REVISED FOR 1000A/1200A
D	11-14-13	SM	SM	SM	REVISED FOR 1000A/1200A
C	11-14-13	SM	SM	SM	REVISED FOR 1000A/1200A
B	11-14-13	SM	SM	SM	REVISED FOR 1000A/1200A
A	11-14-13	SM	SM	SM	REVISED FOR 1000A/1200A

PROJECT NAME	DATE	BY	CHK	APP	DESCRIPTION
HAUS, 1000A - 1200A, RUF SE BREAKER ON NORMAL <td></td> <td></td> <td></td> <td></td> <td></td>					
TYPE: 88 X 41 X 52 <td></td> <td></td> <td></td> <td></td> <td></td>					
THIRD ANGLE PROJECTION <td></td> <td></td> <td></td> <td></td> <td></td>					
COMPUTER GENERATED DRAWING <td></td> <td></td> <td></td> <td></td> <td></td>					
ASCO P. 754876-051 <td></td> <td></td> <td></td> <td></td> <td></td>					
ASCO P. 754876-051 <td></td> <td></td> <td></td> <td></td> <td></td>					
ASCO P. 754876-051 <td></td> <td></td> <td></td> <td></td> <td></td>					

WIRING SCHEMATIC FOR POWERPACT P- & R-FRAME CIRCUIT BREAKERS



WIRING SCHEMATIC FOR 800-3000 A NT/NW CIRCUIT BREAKERS



TRIP UNIT		UC1	UC2	UC3	UC4
○	E5	○	M1	○	○
○	E6	○	Z5	○	○
○	E3	○	Z3	○	○
○	E4	○	Z4	○	○
○	E2	○	Z1	○	○
		○	Z2	○	○
		○	T1	○	○
		○	T2	○	○
		○	T3	○	○
		○	T4	○	○
		○	M2	○	○
		○	M3	○	○
		○	M4	○	○
		○	M5	○	○
		○	M6	○	○
		○	M7	○	○
		○	M8	○	○
		○	M9	○	○
		○	M10	○	○
		○	M11	○	○
		○	M12	○	○
		○	M13	○	○
		○	M14	○	○
		○	M15	○	○
		○	M16	○	○
		○	M17	○	○
		○	M18	○	○
		○	M19	○	○
		○	M20	○	○
		○	M21	○	○
		○	M22	○	○
		○	M23	○	○
		○	M24	○	○
		○	M25	○	○
		○	M26	○	○
		○	M27	○	○
		○	M28	○	○
		○	M29	○	○
		○	M30	○	○
		○	M31	○	○
		○	M32	○	○
		○	M33	○	○
		○	M34	○	○
		○	M35	○	○
		○	M36	○	○
		○	M37	○	○
		○	M38	○	○
		○	M39	○	○
		○	M40	○	○
		○	M41	○	○
		○	M42	○	○
		○	M43	○	○
		○	M44	○	○
		○	M45	○	○
		○	M46	○	○
		○	M47	○	○
		○	M48	○	○
		○	M49	○	○
		○	M50	○	○
		○	M51	○	○
		○	M52	○	○
		○	M53	○	○
		○	M54	○	○
		○	M55	○	○
		○	M56	○	○
		○	M57	○	○
		○	M58	○	○
		○	M59	○	○
		○	M60	○	○
		○	M61	○	○
		○	M62	○	○
		○	M63	○	○
		○	M64	○	○
		○	M65	○	○
		○	M66	○	○
		○	M67	○	○
		○	M68	○	○
		○	M69	○	○
		○	M70	○	○
		○	M71	○	○
		○	M72	○	○
		○	M73	○	○
		○	M74	○	○
		○	M75	○	○
		○	M76	○	○
		○	M77	○	○
		○	M78	○	○
		○	M79	○	○
		○	M80	○	○
		○	M81	○	○
		○	M82	○	○
		○	M83	○	○
		○	M84	○	○
		○	M85	○	○
		○	M86	○	○
		○	M87	○	○
		○	M88	○	○
		○	M89	○	○
		○	M90	○	○
		○	M91	○	○
		○	M92	○	○
		○	M93	○	○
		○	M94	○	○
		○	M95	○	○
		○	M96	○	○
		○	M97	○	○
		○	M98	○	○
		○	M99	○	○
		○	M100	○	○

F	257650	TRD	MM	10/23/15	
E	SEE ECN				
D	227403	TRD	WK	05/13/10	
C	SEE ECN				
B	228452	AE	BK	03/18/10	
-	SEE ECN				
	223197	DAJ	BK	10/20/09	
	SEE ECN				
	211947	MJB	BK	2/7/07	
	SEE ECN				
	167055	CC	BK	05/13/04	
	ISSUE				
	REV. TO SHEET	ECN NO.	BY	APP.	DATE

PROJECT NAME: _____

GFS CIRCUITRY.

COMPUTER GENERATED DRAWING

SCALE: _____ SIZE: BS

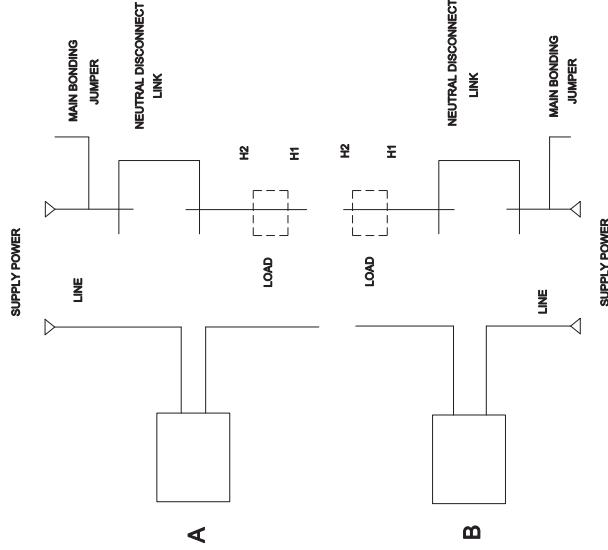
DWG. NO. 758574

ECN NO. 257650

DRAWING F REV. 1 OF 2

ASCO POWER TECHNOLOGIES, L.P.
FLORHAM PARK, NEW JERSEY 07932 U.S.A.

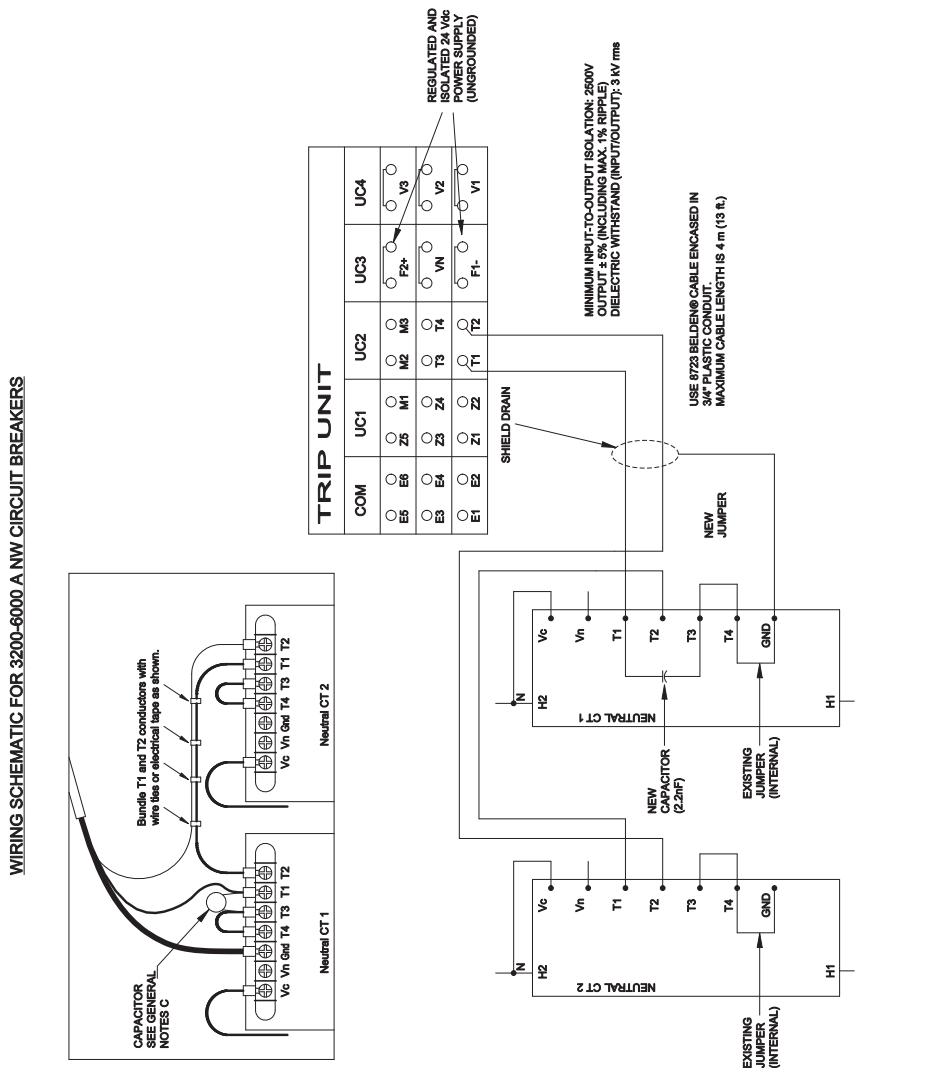
LINE DIAGRAM FOR NW BREAKER



F	257660	TRD	MM	10/23/15
E	227403	TRD	WK	05/13/10
D	228452	AE	BK	03/16/10
C	223197	DAJ	BK	10/20/09
B	211947	MJB	BK	2/7/07
-	167055	CC	BK	05/13/04

REV. TO SHEET	ISSUE	ECN NO.	BY	APP.	DATE

WIRING SCHEMATIC FOR 3200-6000 A NW CIRCUIT BREAKERS



PROJECT NAME:

BY	DATE	MANUFACTURING TOLERANCES TO BE IN ACCORDANCE WITH ASCO PROCEDURE MP-403. FOR PLASTIC PARTS SEE MP-1-055.	ASSEM. REF. NO.
CC	05/13/04		
BK	05/13/04	PROPERTY OF ASCO POWER TECHNOLOGIES. USE PERMITTED FOR OUR WORK ONLY. ALL RIGHTS OF DESIGN OR INVENTION ARE RESERVED.	
BK	05/13/04		

GENERAL NOTES

- A. IF LOAD IS CONNECTED TO LOWER END OF CIRCUIT BREAKER, CONNECT THE LOAD NEUTRAL TO THE H1 END OF THE NEUTRAL CURRENT TRANSFORMER.
- B. IF SUPPLY POWER IS CONNECTED TO THE LOWER END OF THE CIRCUIT BREAKER, CONNECT THE SUPPLY NEUTRAL TO THE H1 END OF THE NEUTRAL CURRENT TRANSFORMER.
- C. CAPACITOR 2.2NF IS PROVIDED WITH CIRCUIT BREAKER.

GFS CIRCUITRY.

SCALE	SIZE	COMPUTER GENERATED DRAWING
	BS	
DWG. NO.		
758574		
DRAWING F REV.	ECN NO.	SHEET
	257650	2 OF 2

THIRD ANGLE PROJECTION

