

## ATS Submittal

### Transfer Switch Details

#6	ATS	AMPS: 0600	QTY: 3
Product	: Series 300	Catalog Number	: J03ATSB30600NGXM
Service Voltage / Hz	: 480V/60Hz	Optional Accessories	: 11BE,44G
Bypass Isolation	: Not Applicable	Product Description	: 300 Series, Automatic Open Transition Transfer Switch
No. of Switched Poles: 4	: 4	Neutral Configuration	: Switched [B]
Withstand Rating:	: See WCR Table Below	No. of Cables & Lug Size	: 2, 1/0 AWG to 600 MCM
Frame = J, Switch Rating = 0600, Series = 300			
Enclosure	: 3R(M)-UL Type 3R secure double door enclosure (See Disclaimer 3)	Service	: Three Phase, 4-wire
Extended Warranty	: Not Included	Markings	:

#	ACCESSORY DESCRIPTIONS	
	Accessory Code	Description
1	11BE	Adds the following features to the Group G controller: (1) Serial RS-485 Modbus Communications (2) Multi-Schedule Engine Exerciser (3) a 300 Entry Event Log and (4) a common alarm output function. When applied on 3-phase systems it also enables: (1) 3-Phase Emergency Source VLL sensing (2) Phase Rotation Monitoring (3) Emergency Source VLL Unbalance Monitoring.
2	44G	Strip heater w/ thermostat, wired to load terminals: 208-600 volts



# THREE PHASE WIRING FOR ASCO 300 SERIES TRANSFER SWITCHES (J3ATS/J3NTS) 600 AMPERES WITH GROUP G CONTROLS

## GENERAL INFORMATION

**D**

THIS WIRING APPLIES TO 300 SERIES TRANSFER SWITCHES THAT UTILIZE THE "J" FRAME POWER TRANSFER SWITCH RATED 600 AMPERES.

THE GROUP G CONTROLLER PROVIDES EITHER AUTOMATIC (ASATS) OR NON-AUTOMATIC (MANUAL) (SNTS) OPERATION BASED ON ITS FACTORY SETTING ACCORDING TO THE CUSTOMER ORDER REQUIREMENTS.

THE TYPE OF TRANSFER SWITCH PROVIDED CAN BE DETERMINED FROM THE PRODUCT IDENTIFICATION MARKINGS LOCATED ON BOTH THE POWER TRANSFER SWITCH AND THE COVER OF THE GROUP G CONTROLLER.

ALL OPERATIONAL SETTINGS AND SEQUENCES OF THE GROUP G CONTROLLER AND ITS RELATED OPTIONAL ACCESSORIES (11P, 11RX, 23G) ARE PROVIDED IN THE USER'S GUIDE.

ASCO GROUP G CONTROLLER FOR AUTOMATIC & NON-AUTOMATIC TRANSFER SWITCHES, PART NUMBER 381333-400.

INFORMATION FOR INSTALLATION AND TESTING OF THE TRANSFER SWITCH IS PROVIDED IN THE INSTALLATION MANUAL, ASCO SNTS, S40TS, S3TS & S3DTS, J-DESIGN 150-800 A TRANSFER SWITCHES, PART NUMBER 381333-404.

**C**

**ENGINE CONTROL CONTACTS**

FEATURE 7 & FEATURE 8:  
ONE SET OF FORM C CONTACTS "NR" (FEAT. 7 INC. FEAT. 8 INC) THAT CHANGE POSITION ON EXPIRATION OF THE FEATURE 1C, OVERRIDE MOMENTARY NORMAL SOURCE OUTAGES TIME DELAY, AND RESET ON EXPIRATION OF THE FEATURE 2E ENGINE COOLDOWN TIME DELAY.

AN AUXILIARY CONTACT THAT IS CLOSED WHEN THE TRANSFER SWITCH IS CONNECTED TO THE EMERGENCY SOURCE, IS CONNECTED ACROSS THE NC CONTACT (FEATURE 7).

AN ADDITIONAL SET OF ENGINE STARTING CONTACTS ARE AVAILABLE ON THE GROUP G CONTROLLER WHEN THE FEATURE SETTING OF THE CONTROLLER OUTPUT CONTACTS "OP1" IS SET TO OPERATE AS "NR2".

ADDITIONAL OPTIONAL ENGINE STARTING CONTACTS "NR2" ARE AVAILABLE WHEN OPTIONAL ACCESSORY 16RX (RELAY EXPANSION MODULE) IS INCLUDED IN THE TRANSFER SWITCH ASSEMBLY. OUTPUT CONTACTS "OP2" AND/OR "OP3" WILL PROVIDE ENGINE STARTING FUNCTION WHEN THE FEATURE SETTING OF EACH IS SET TO OPERATE AS "NR2".

CONTACTS ARE RATED 5 AMPS RESISTIVE AT 30 VDC MAXIMUM, 100 mA AT 5 VDC MINIMUM.

REFER TO USER'S GUIDE, ASCO GROUP G CONTROLLER FOR AUTOMATIC & NON-AUTOMATIC TRANSFER SWITCHES, PART NUMBER 381333-400 FOR SETTING INFORMATION.

**B**

**LOAD DISCONNECT FEATURE**

FEATURE 31: INCLUDES SUB-FEATURES 31F, 31G, 31M, 31N  
A SET OF FORM C CONTACTS ARE PROVIDED ON THE GROUP G CONTROLLER AS "OP1". WHEN THE FEATURE SETTING OF "OP1" IS SET TO OPERATE AS "FEATURE 31", THE TIME DELAY SETTINGS OF THE SUB-FEATURES ARE AVAILABLE.

"OP1" CAN BE SET TO OPERATE TO PROVIDE THE FOLLOWING FUNCTIONS USING THE TIME DELAY SETTINGS ASSOCIATED WITH EACH SUB-FEATURE:

- 31F - NORMAL TO EMERGENCY PRE-TRANSFER SIGNAL
- 31G - NORMAL TO NORMAL PRE-TRANSFER SIGNAL
- 31M - NORMAL TO EMERGENCY POST-TRANSFER SIGNAL
- 31N - EMERGENCY TO NORMAL POST-TRANSFER SIGNAL

THE "OP1" OUTPUT CONTACTS CHANGE POSITION FOLLOWING EACH OF THE ABOVE TIME DELAYS.

ADDITIONAL LOAD DISCONNECT CONTACTS "FEATURE 31" ARE AVAILABLE WHEN OPTIONAL ACCESSORY 16RX (RELAY EXPANSION MODULE) IS INCLUDED IN THE TRANSFER SWITCH ASSEMBLY. OUTPUT CONTACTS "OP2" AND/OR "OP3" WILL PROVIDE LOAD DISCONNECT FUNCTIONS WHEN THE FEATURE SETTING OF EACH IS SET TO OPERATE AS "FEATURE 31".

ALL OUTPUT CONTACTS ("OP1", "OP2", "OP3") SET TO OPERATE AS "FEATURE 31", SHARE THE COMMON TIME DELAY SETTINGS OF SUB-FEATURES 31F, 31G, 31M, AND 31N.

CONTACTS ARE RATED 5 AMPS RESISTIVE AT 30 VDC MAXIMUM, 100 mA AT 5 VDC MINIMUM.

REFER TO USER'S GUIDE, ASCO GROUP G CONTROLLER FOR AUTOMATIC & NON-AUTOMATIC TRANSFER SWITCHES, PART NUMBER 381333-400 FOR SETTING INFORMATION.

**A**

**INPHASE TRANSFER FEATURE FOR LOAD TRANSFER**

INPHASE TRANSFER CONTROL INITIATES AN INPHASE TRANSFER OF LOADS BETWEEN LIVE SOURCES. THIS IS USED TO PREVENT NUISANCE TRIPPING OF DISTRIBUTION CIRCUIT BREAKERS AND POSSIBLE DAMAGE TO MECHANICAL LOADS ASSOCIATED WITH OUT OF PHASE TRANSFER.

REFER TO USER'S GUIDE, ASCO GROUP G CONTROLLER FOR AUTOMATIC & NON-AUTOMATIC TRANSFER SWITCHES, PART NUMBER 381333-400 FOR SETTING INFORMATION.

**SOURCE AVAILABILITY SIGNALS**

SIGNALS INDICATING THE AVAILABILITY OF THE NORMAL & EMERGENCY SOURCES IS PROVIDED WHEN OPTIONAL ACCESSORY 16RX (RELAY EXPANSION MODULE) IS INCLUDED IN THE TRANSFER SWITCH ASSEMBLY. OUTPUT CONTACTS "TR1" (EMERGENCY SOURCE AVAILABLE) AND "TR2" (NORMAL SOURCE AVAILABLE) CHANGE POSITION WHEN THE SOURCE IS ACCEPTABLE.

CONTACTS ARE RATED 5 AMPS RESISTIVE AT 30 VDC MAXIMUM, 100 mA AT 5 VDC MINIMUM.

**NOTES**

1. SWITCH SHOWN DE-ENERGIZED CONNECTED TO NORMAL SOURCE.
2. DEVICE SYMBOLS AND DESIGNATIONS ARE IN ACCORDANCE WITH NEMA PUB. ICS 1, PART 1-101A.
3. ALL WIRING IS #16 AWG, TINNED, STRANDED COPPER UNLESS OTHERWISE INDICATED.
4. INDICATES CUSTOMER CONNECTION POINTS.
5. INDICATES FACTORY CONNECTION POINTS.
6. CONNECTION POINTS THAT HAVE BOTH CUSTOMER CONNECTIONS AND FACTORY CONNECTIONS ARE SHOWN OPEN AS CUSTOMER CONNECTION POINTS.
7. THE TRANSFER UNIT IS MOUNTED ON THE BACK INSIDE SURFACE OF THE ENCLOSURE. THE CONTROL PANEL AND ANY OPTIONAL ACCESSORIES ARE MOUNTED ON THE INSIDE SURFACE OF THE DOOR.
8. AN OPERATOR'S MANUAL IS FURNISHED WITH EACH AUTOMATIC TRANSFER SWITCH. REFER TO THIS PUBLICATION PRIOR TO INSTALLATION AND OPERATION OF THE SWITCH.
9. GROUND STRAP ON CONTROL PANEL IS AFFIXED TO CHASSIS (ENCLOSURE) AT LOWER LEFT CONTROL PANEL MOUNTING STUD.

**COMMON ALARM & NOT IN AUTO SIGNALING FEATURES**

A SET OF FORM C CONTACTS IS PROVIDED ON THE GROUP G CONTROLLER AS "OP1". THE FEATURE SETTING OF "OP1" CAN BE SET TO OPERATE THE CONTACTS AS A "NOT IN AUTO" SIGNAL.

WHEN "OP1" IS SET FOR "NOT IN AUTO", THE OUTPUT CONTACTS CHANGE POSITION WHEN THE TRANSFER IS BEING INHIBITED FROM TRANSFERRING TO THE EMERGENCY SOURCE (FEATURE 34B) OR THE TRANSFER SWITCH HAS BEEN SET FOR NON-AUTOMATIC (MANUAL) OPERATION.

WHEN OPTIONAL ACCESSORY 11BE "SOFTWARE BUNDLE" IS PART OF THE TRANSFER SWITCH ASSEMBLY, "OP1" MAY ALTERNATIVELY SET FOR A "COMMON ALARM" SIGNAL. THE OUTPUT CONTACTS CHANGE POSITION WHEN A "COMMON ALARM" IS NOT PRESENT AND RESET WHEN A "COMMON ALARM" CONDITION IS PRESENT. THE "COMMON ALARM" SIGNAL CONDITIONS ARE SELECTABLE.

ADDITIONAL "COMMON ALARM" AND "NOT IN AUTO" CONTACTS ARE AVAILABLE WHEN OPTIONAL ACCESSORY 16RX (RELAY EXPANSION MODULE) IS INCLUDED IN THE TRANSFER SWITCH ASSEMBLY. OUTPUT CONTACTS "OP2" AND/OR "OP3" WILL PROVIDE SIGNAL FUNCTIONS WHEN THE FEATURE SETTING OF EACH IS SET TO OPERATE AS "COMMON ALARM" OR "NOT IN AUTO".

CONTACTS ARE RATED 5 AMPS RESISTIVE AT 30 VDC MAXIMUM, 100 mA AT 5 VDC MINIMUM.

REFER TO USER'S GUIDE, ASCO GROUP G CONTROLLER FOR AUTOMATIC & NON-AUTOMATIC TRANSFER SWITCHES, PART NUMBER 381333-400 FOR SETTING INFORMATION.

**EXTERNAL POWER SUPPLY COMPATIBILITY**

USE OF AN EXTERNAL POWER SUPPLY IS USEFUL WHEN REQUIRED TO EXTEND THE FOLLOWING CONTROLLER TIME DELAYS BEYOND 8 SECONDS:

FEATURE 1C - OVERRIDE MOMENTARY NORMAL SOURCE OUTAGES  
FEATURE 1F - OVERRIDE MOMENTARY EMERGENCY SOURCE OUTAGES

AN EXTERNAL POWER SUPPLY IS ALSO USEFUL WHEN THE TRANSFER SWITCH IS USED WITH COMMUNICATIONS FEATURES BY ENABLING THE CONTROLLER TO CONTINUE COMMUNICATING.

AN EXTERNAL POWER SOURCE MAY BE PROVIDED TO THE CONTROLLER, UNTIL THE NORMAL SOURCE OR EMERGENCY SOURCE IS AVAILABLE, BY USE OF:

- AN EXTERNAL 24 VDC POWER SUPPLY WITH ACCESSORY 16RX (RELAY EXPANSION MODULE) OR
- OPTIONAL ACCESSORY 11P (UNINTERRUPTIBLE POWER SUPPLY MODULE)

EXTERNAL 24 VDC POWER SUPPLY 11P:  
AN EXTERNAL 24 VDC POWER SUPPLY MAY BE USED TO POWER THE CONTROLLER WHEN ACCESSORY 16RX (RELAY EXPANSION MODULE) IS INCLUDED IN THE TRANSFER SWITCH ASSEMBLY. OUTPUT CONTACTS "OP2" WILL PROVIDE EXTERNAL 24 VDC POWER SUPPLY FUNCTIONALITY WHEN ITS FEATURE SETTING IS SET TO OPERATE AS "1C". ADDITIONALLY, JUMPERS MUST BE RECONFIGURED ON ACCESSORY 16RX (RELAY EXPANSION MODULE) TO ENABLE THIS FUNCTION AS FOLLOWS:

REMOVE JUMPERS "J1" 1-2 & "J1" 3-4  
CONNECT JUMPERS "J1" 5-7 & "J1" 6-8

THE OUTPUT CONTACTS CHANGE POSITION WHEN EITHER THE NORMAL SOURCE OR EMERGENCY SOURCE IS AVAILABLE AND RESET WHEN NEITHER SOURCE IS AVAILABLE. THE "OP2" NC CONTACT SWITCHES CUSTOMER PROVIDED 24 VDC FROM THE EXTERNAL POWER SUPPLY TO THE CONTROLLER.

REFER TO USER'S GUIDE, ASCO GROUP G CONTROLLER FOR AUTOMATIC & NON-AUTOMATIC TRANSFER SWITCHES, PART NUMBER 381333-400 FOR SETTING INFORMATION.

**LOAD CURRENT METERING**

WHEN OPTIONAL ACCESSORY 23GB IS PART OF THE TRANSFER SWITCH ASSEMBLY, THREE PHASE CURRENT MEASUREMENTS ARE AVAILABLE FOR DISPLAY ON THE GROUP G CONTROLLER.

REFER TO USER'S GUIDE, ASCO GROUP G CONTROLLER FOR AUTOMATIC & NON-AUTOMATIC TRANSFER SWITCHES, PART NUMBER 381333-400 FOR INFORMATION ON USE.

**ADVANCED-FUNCTION SOFTWARE BUNDLE**

WHEN OPTIONAL ACCESSORY 11BE IS PART OF THE TRANSFER SWITCH ASSEMBLY, AN ADVANCED-FUNCTION SOFTWARE BUNDLE IS AVAILABLE TO PERFORM THE FOLLOWING FUNCTIONS:

- SERIAL COMMUNICATIONS (RS-485)
- PROGRAMMABLE ENGINE EXERCISER
- EVENT LOG
- COMMON ALARM SIGNAL CAPABILITY ON GROUP G CONTROLLER "OP1" OUTPUT.

(3 PHASE SENSING ONLY)  
- 3 PHASE EMERGENCY SOURCE SENSING.  
- PHASE ROTATION SENSING.  
- EMERGENCY VOLTAGE UNBALANCE SENSING.

REFER TO USER'S GUIDE, ASCO GROUP G CONTROLLER FOR AUTOMATIC & NON-AUTOMATIC TRANSFER SWITCHES, PART NUMBER 381333-400 FOR INFORMATION ON THESE FUNCTIONS.

**NON-AUTOMATIC (MANUAL) OPERATION**

TRANSFER SWITCH ASSEMBLY FACTORY SET FOR NON-AUTOMATIC OPERATION PROVIDE USER INITIATED, ELECTRICAL OPERATION OF THE TRANSFER SWITCH TO EITHER AVAILABLE SOURCE. THE TRANSFER SWITCH ASSEMBLY IS PHYSICALLY IDENTICAL TO THAT OF THE AUTOMATIC TYPE.

WHEN THE TRANSFER SWITCH IS SET FOR NON-AUTOMATIC OPERATION, A CUSTOMER PROVIDED SELECTOR SWITCH MAY BE USED TO OPERATE IT FROM A REMOTE LOCATION.

**REMOTE CONTROL FEATURES**

THE FOLLOWING CONTROL PANEL INPUTS PROVIDE REMOTE CONTROL FUNCTIONS FOR THE TRANSFER SWITCH. EACH FUNCTION CAN BE IMPLEMENTED BY THE CUSTOMER PROVIDING THE FORM OF CONTROL DESCRIBED. EACH CONTROL CONTACT MUST BE SUITABLE FOR A 5 VDC LOW ENERGY CIRCUIT.

**EXTERNAL FEATURE 17: REMOTE TRANSFER TO EMERGENCY FEATURE (FOR AUTOMATIC TRANSFER TYPE ONLY)** - REQUIRES A CUSTOMER SUPPLIED, NORMALLY CLOSED CONTACT. OPENING OF THE CONTACT CAUSES ENGINE START AND TRANSFER TO THE EMERGENCY SOURCE. RE-CLOSURE OF THE CONTACT ACTIVATES THE FEATURE 3A RETRANSFER TO NORMAL (IF JUST TEST) TIME DELAY PRIOR TO RETRANSFER. IN THE EVENT THAT THE EMERGENCY SOURCE FAILS WHILE THE TRANSFER SWITCH IS CONNECTED TO EMERGENCY AND THE CUSTOMER SUPPLIED CONTACT IS OPEN, THE TRANSFER SWITCH WILL AUTOMATICALLY RETRANSFER TO THE NORMAL SOURCE.

**EXTERNAL FEATURE 6B: REMOTE BYPASS OF RETRANSFER TO NORMAL TIME DELAY** - REQUIRES A CUSTOMER SUPPLIED, NORMALLY CLOSED CONTACT. OPENING OF THE CONTACT BYPASSES FEATURE 3A RETRANSFER TO NORMAL DELAY IF ACTIVE.

REFER TO USER'S GUIDE, ASCO GROUP G CONTROLLER FOR AUTOMATIC & NON-AUTOMATIC TRANSFER SWITCHES, PART NUMBER 381333-400 FOR SETTING INFORMATION.

CATALOG NUMBER SUFFIXES				EXPLANATION OF CATALOG NUMBER CODES										
TS	CATALOG FRAME	NEUTRAL TYPE	PHASE TYPE	POLES	AMPS	VOLT CODE	CONTROLLER	OPTIONAL ACCESSORY	ENCLOSURE CODE	NEUTRAL TYPE	VOLTAGE CODES	ENCLOSURE CODES		
										CODE	DESCRIPTION	CODE	TYPE	DESCRIPTION
		A	SATS	A	3	800	G	X	C	SOLID SWITCHING	BLANK	C	1	OPEN TYPE (NO ENCLOSURE) GENERAL PURPOSE, INDOOR
			SNTS	B					F		208	F	3R	INDOOR/OUTDOOR, RAINPROOF, SLEET & ICE RESISTANT
									D		220	G	4	INDOOR/OUTDOOR, WATER TIGHT & DUST TIGHT
									E		230	H	4X	INDOOR, INDUSTRIAL ENVIRONMENTS, OIL TIGHT & DUST TIGHT
									F		240	L	12	(SECURE ENCLOSURES)
									G		277	M	3R	INDOOR/OUTDOOR, RAINPROOF, SLEET & ICE RESISTANT
									H		380	N	4	INDOOR/OUTDOOR, WATER TIGHT & DUST TIGHT
									J		400	P	4X	INDOOR, INDUSTRIAL ENVIRONMENTS, OIL TIGHT & DUST TIGHT
									K		415	Q	12	(SECURE ENCLOSURES)
									L		440			
									M		460			
									N		480			
									O		500*			
									P		575*			
									Q		600*			
									R					

CATALOG NUMBER  
**ASCO** S.O.  
CERTIFIED TO  
BY  
DATE

FORM REV. G

PROJECT NAME: \_\_\_\_\_

WIRING \_\_\_\_\_ DIAGRAM \_\_\_\_\_

300 SERIES J3ATS/J3NTS, THREE PHASE 600 AMP

"J" FRAME, GROUP G CONTROLS

DATE: \_\_\_\_\_

BY: \_\_\_\_\_

DATE: \_\_\_\_\_

SCALE: \_\_\_\_\_

DATE: \_\_\_\_\_

NO. \_\_\_\_\_

OF \_\_\_\_\_

G	27686	TR	8K	05/01/18
F	27621	TR	8K	10/18/18
E	26806	MKA	JPB	04/10/17
D	26223	AE	8K	10/18/14
C	26120	AJ	MM	10/17/14
B	24770	BDH	BDH	07/04/14
A	24380	BDH	BDH	03/03/13

PROPERTY OF ASCO POWER TECHNOLOGIES, LLC. REPRODUCED FOR YOUR WORK ONLY. ALL RIGHTS OF DESIGN OR INVENTION ARE RESERVED.

COMPUTER GENERATED DRAWING

SCALE: \_\_\_\_\_

DATE: \_\_\_\_\_

NO. \_\_\_\_\_

OF \_\_\_\_\_

ASCO P. OVER TECHNOLOGIES, L.P.  
AUSTIN, TEXAS, NEW JERSEY 07854, U.S.A.

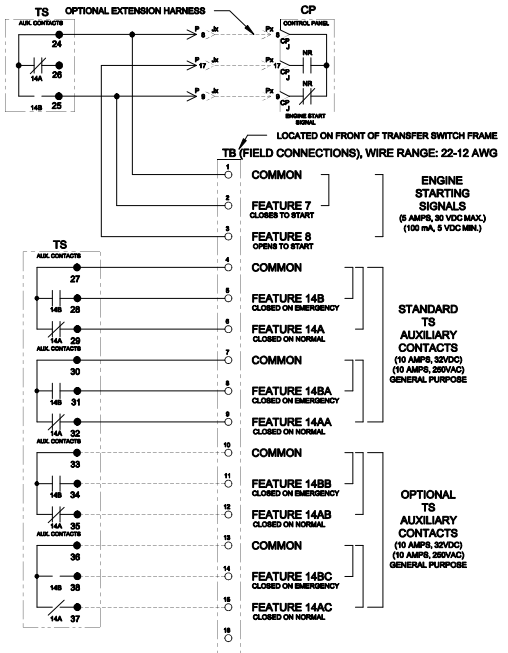
9787-45

REV. G

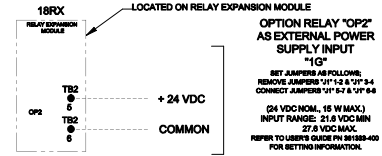
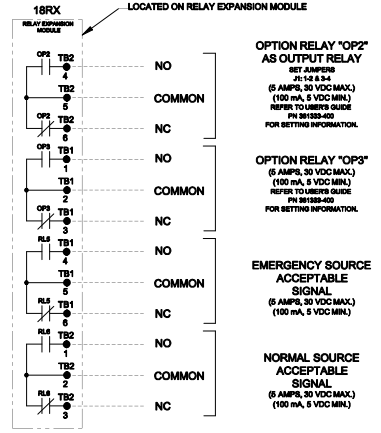
NO. 27686

1 of 6

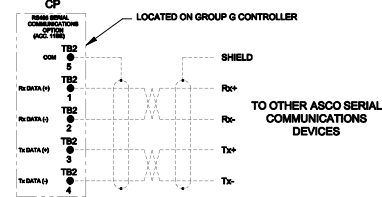
D



**OPTIONAL ACCESSORY 1BRX (RELAY EXPANSION MODULE)**



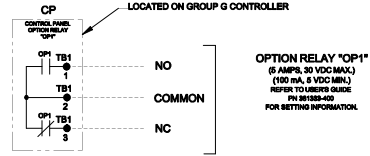
**RS485 SERIAL COMMUNICATIONS OPTION**  
AVAILABLE WITH OPTIONAL ACCESSORY 11BX, ADVANCED FUNCTION SOFTWARE BUNDLE REFER TO USER'S GUIDE PH 80133-400 FOR SETTING INFORMATION.



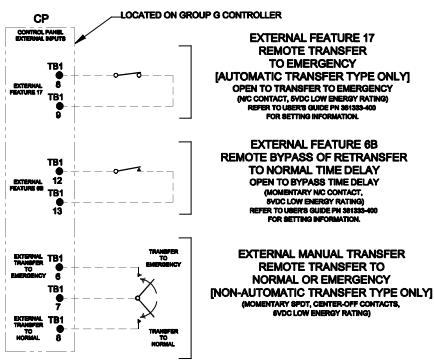
- NOTES:**
- EARTH GROUND SHIELD AT HOST DEVICE ONLY.
  - FIELD WIRING: USE UL LISTED, STRANDED, TWISTED PAIR, OVERALL FOL SHIELD WITH STRANDED DRAIN WIRE SUITABLE FOR R9422 EQUIVALENT TO: (STANDARD 90°C) BELDEN 8942 OR 8929 OR ALPHA 6222C OR 6222C (PLENUM RATED) BELDEN 89729 OR 82729 OR ALPHA 6922

C

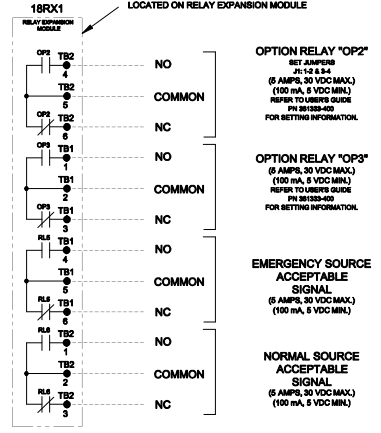
**CONTROLLER OPTION RELAY "OP1" (STANDARD)**



**CONTROLLER REMOTE CONTROL FEATURES**



**OPTIONAL ACCESSORY 1BRX1 (SECOND RELAY EXPANSION MODULE)**



B

B

A

A

G	27668	TR	8K	05/05/18
F	27611	TR	8K	10/18/18
E	26646	MKA	JPB	04/10/17
D	26120	AJ	MM	10/17/14
C	24770	BDH	BDH	4/14/14
B	24625	AR	AR	01/04/14
A	24280	BDH	BDH	03/03/13
	24285	BDH	BDH	03/13

PROJECT NAME: \_\_\_\_\_

WIRING: \_\_\_\_\_

300 SERIES JSATS/JNITS, THREE PHASE 800 AMPS

"J" FRAME, GROUP G CONTROLS

DESIGNED BY	SDH	DATE	08/17	MANUFACTURING TOLERANCES TO BE AS ACCORDING WITH ASCO PROCEDURES. FOR PLASTIC PARTS SEE SPECIFICATIONS.	ASCO REF. NO.	COMPUTER GENERATED DRAWING
CHECKED BY	SDH	DATE	08/17	PROPERTY OF ASCO POWER TECHNOLOGIES, INC. PERMITTED FOR OUR WORK ONLY. ALL RIGHTS OF DESIGN OR INVENTION ARE RESERVED.	SCALE	1:1
APPROVED BY	SDH	DATE	08/17	ASCO	ASCO P. OVER TECHNOLOGIES, L.P.	978745
DATE	08/17	REV.	G	ASCO P. OVER TECHNOLOGIES, L.P.	PLAZA PARK, NEW JERSEY 07068 U.S.A.	2 OF 6

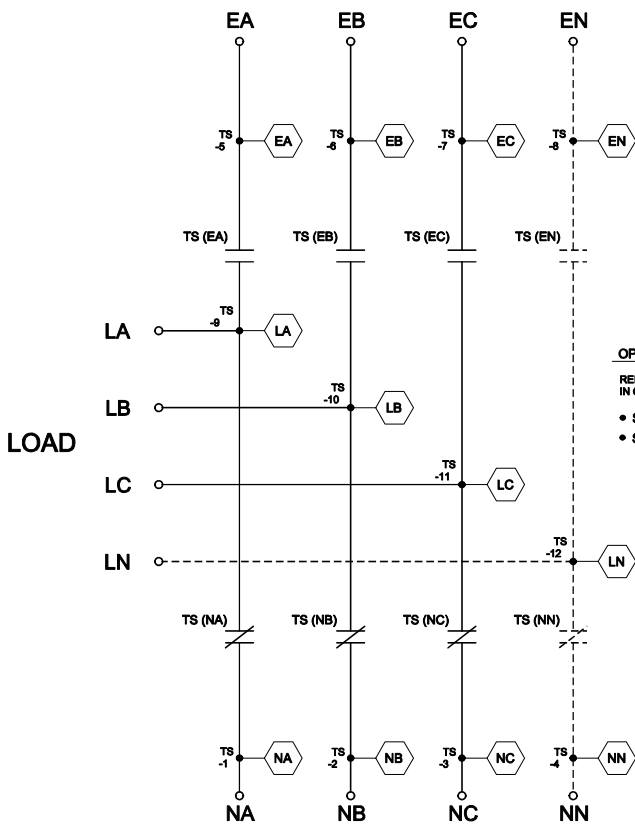
8 7 6 5 4 3 2 1

MAIN POWER POLES

TS OPERATOR CIRCUIT

EMERGENCY

NORMAL

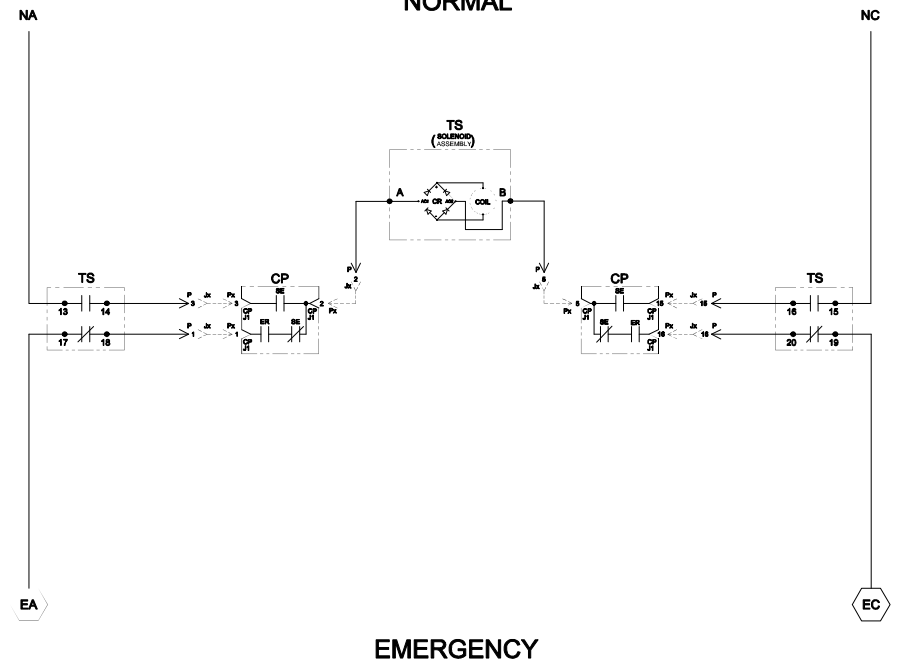


**OPTIONAL NEUTRAL TYPES**  
 REFER TO "EXPLANATION OF CATALOG NUMBER CODES" IN CATALOG NUMBER CHART ON SHEET 1.

- SOLID BUS PLATE
- SWITCHING CONTACTS

NORMAL

**NOTE:**  
 ATS SHOWN CLOSED ON NORMAL SOURCE.



TS CONTROL CONTACTS		SOLENOID POSITION	
TS		CLOSED BEFORE	BEFORE CLOSING
		NORMAL	EMERGENCY
13-14		X	
15-16			X
17-18		X	
19-20			X

TCC (TOP DEAD CENTER)  
 TRIPPER SWITCH TEST & ADJUSTMENT PROCEDURE  
 SPECIFIED CONTROL CUT-OFF (CONTACT OPENING)  
 SETTING.

G	276661	TR	IK	05/03/18
F	276211	TR	IK	10/18/18
E	266405	MKA	JPB	04/10/17
D	261210	AJ	MM	10/17/14
C	247770	BDH	BDH	4/14/14
B	246528	AR	IK	01/01/14
A	242380	BDH	BDH	5/20/13
	242395	BDH	BDH	5/6/13
	18166			

PROJECT NAME: \_\_\_\_\_

WIRING DIAGRAM

300 SERIES JSATS/JSNTS, THREE PHASE 600 AMPS

"J" FRAME, GROUP G CONTROLS

THIRD ANGLE PROJECTION

COMPUTER GENERATED DRAWING

SCALE: \_\_\_\_\_

DATE: \_\_\_\_\_

978745

ASCO P. OVER TECHNOLOGIES, L.P.

FLORHAM PARK, NEW JERSEY 07831 U.S.A.

REV. G

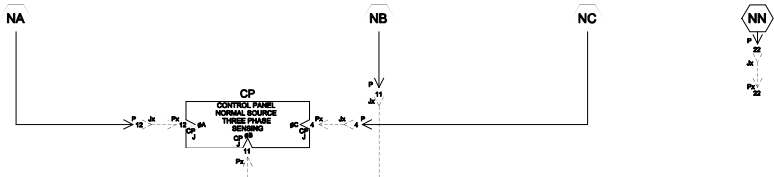
276568

3 OF 8

8 7 6 5 4 3 2 1

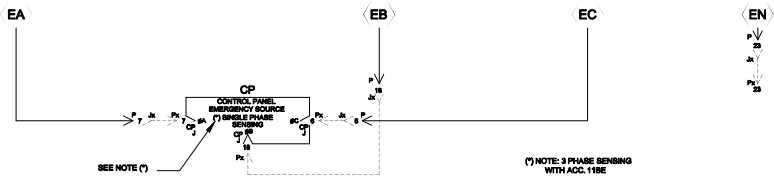
**NORMAL SOURCE CIRCUITS**

**NORMAL**



**EMERGENCY SOURCE CIRCUITS**

**EMERGENCY**

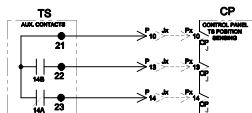


**LOAD TERMINAL CIRCUITS**

**LOAD**

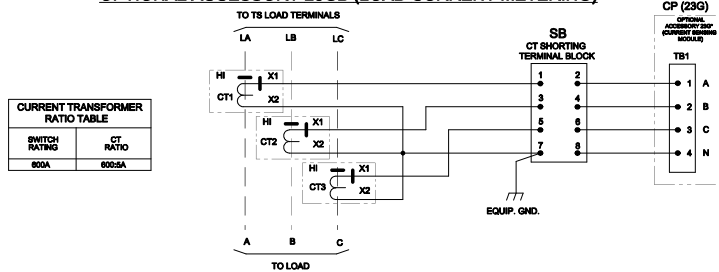


**CONTROL SIGNALS & INDICATION**



**ADDITIONAL CIRCUITS**

**OPTIONAL ACCESSORY 23GB (LOAD CURRENT METERING)**



G	276065	TR	IK	05/05/18
	SEE ECH			
F	276211	TR	IK	10/18/18
	SEE ECH			
E	266405	MKA	JPB	04/10/17
	SEE ECH			
D	261210	AJ	MM	10/17/14
	SEE ECH			
C	247770	BDH	BDH	4/14/14
	SEE ECH			
B	246225	AE	IK	01/18/14
	SEE ECH			
A	242380	BDH	BDH	6/20/13
	SEE ECH			
	242395	BDH	BDH	6/20/13
	ISSUE			

PROJECT NAME:		DIAGRAM		THIRD ANGLE PROJECTION	
300 SERIES JSATS/JNITS, THREE PHASE 600 AMPS		"J" FRAME, GROUP G CONTROLS			
BY	DATE	MANUFACTURING TO BE USED TO BE BY	APPROVED BY	SCALE	SIZE
SDH	07/17	ASCO POWER TECHNOLOGIES, INC.		1:1	DS
CHECKED		FOR PLASTIC PARTS SEE DRAWING			
APPROVAL		PROPERTY OF ASCO POWER TECHNOLOGIES, INC. NOT TO BE REPRODUCED OR TRANSMITTED IN ANY FORM OR BY ANY MEANS, ELECTRONIC OR MECHANICAL, WITHOUT PERMISSION IN WRITING FROM ASCO POWER TECHNOLOGIES, INC.			
DATE		ASCO	ASCO P. OVER TECHNOLOGIES, L.P.	DWG. NO.	978745
			FLORHAM PARK, NEW JERSEY 07938 U.S.A.	ISSUE	G
				REV.	1

D  
C  
B  
A

D  
C  
B  
A

8 7 6 5 4 3 2 1



