

Woodstock STOCK ORDER 1 2025

Transfer Switch Details

#3	ATS	AMPS: 3000	QTY: 2
Product	: Series 300	Catalog Number	: G03AUSB33000NGXM
Service Voltage / Hz	: 480V/60Hz	Optional Accessories	: 11BE,40PB,44G,119M1
Bypass Isolation	: Not Applicable	Product Description	: 300 Series, Automatic Service Entrance Transfer Switch
No. of Switched Poles: 4	: 4	Neutral Configuration	: Switched [B]
Withstand Rating:	: See WCR Table Below	No. of Cables & Lug Size	: See Applicable Outline Drawing
Frame = G, Switch Rating = 3000, Series = 300			
Enclosure	: 3R(M)-UL Type 3R secure double door enclosure (See Disclaimer 3)	Service	: Three Phase, 4-wire
Extended Warranty	: Not Included	Markings	:

#	ACCESSORY DESCRIPTIONS	
	Accessory Code	Description
1	11BE	Adds the following features to the Group G controller: (1) Serial RS-485 Modbus Communications (2) Multi-Schedule Engine Exerciser (3) a 300 Entry Event Log and (4) a common alarm output function. When applied on 3-phase systems it also enables: (1) 3-Phase Emergency Source VLL sensing (2) Phase Rotation Monitoring (3) Emergency Source VLL Unbalance Monitoring.
2	40PB	Normal and Emergency Reversed (Available on all frames and sizes)
3	44G	Strip heater w/ thermostat, wired to load terminals: 208-600 volts
4	119M1	Internally powered Energy Reducing Maintenance Switch (ERMS) ERMS lowers the instantaneous pickup setting, utilizes a faster acting instantaneous trip function, or activates an alternate set of trip settings on a breaker to provide reduced arc flash incident energy. To be used on service entrance rated switches containing Square D breakers with MicroLogic 5.0/6.0 P/H trip units Customer is responsible for all trip unit settings.

8

7

6

5

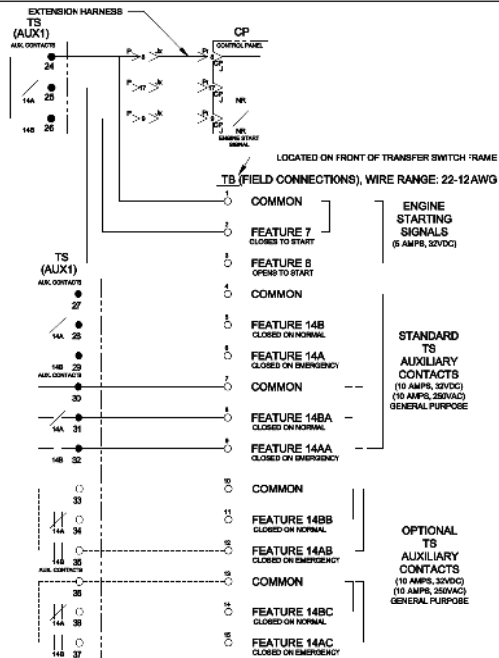
4

3

2

1

FIELD CONNECTIONS

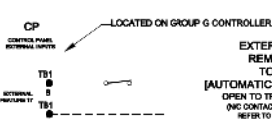


CONTROLLER OPTION RELAY "OP1" (STANDARD)

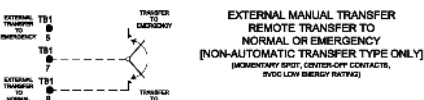


OPTION RELAY "OP1"
(5 AMP, 30 VDC MAX.)
(100 mA, 5 VDC MIN.)
REFER TO USER'S GUIDE
PH 36133-430
FOR SETTING INFORMATION.

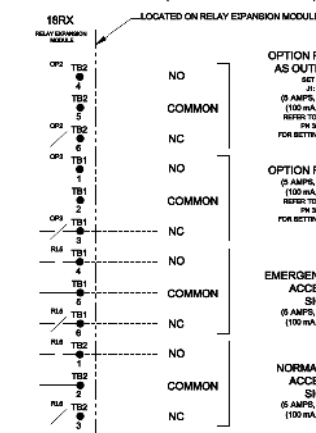
CONTROLLER REMOTE CONTROL FEATURES



EXTERNAL FEATURE 6B
REMOTE BYPASS OF RETRANSFER
TO NORMAL TIME DELAY
OPEN TO BYPASS TIME DELAY
(NON-AUTOMATIC TRANSFER TYPE ONLY)
(NON-AUTOMATIC TRANSFER TYPE ONLY)
(NON-AUTOMATIC TRANSFER TYPE ONLY)
REFER TO USER'S GUIDE PH 36133-430
FOR SETTING INFORMATION.



OPTIONAL ACCESSORY 18RX (RELAY EXPANSION MODULE)

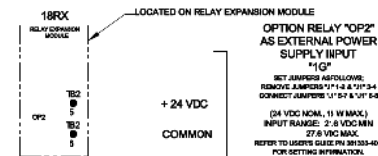


OPTION RELAY "OP2"
AS OUTPUT RELAY
SET AMPERES
J1: 1.5 & 3.4
(5 AMP, 30 VDC MAX.)
(100 mA, 5 VDC MIN.)
REFER TO USER'S GUIDE
PH 36133-430
FOR SETTING INFORMATION.

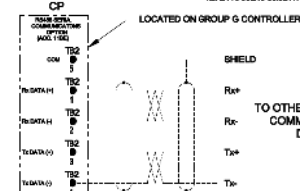
OPTION RELAY "OP3"
(5 AMP, 30 VDC MAX.)
(100 mA, 5 VDC MIN.)
REFER TO USER'S GUIDE
PH 36133-430
FOR SETTING INFORMATION.

EMERGENCY SOURCE
ACCEPTABLE
SIGNAL
(5 AMP, 30 VDC MAX.)
(100 mA, 5 VDC MIN.)

NORMAL SOURCE
ACCEPTABLE
SIGNAL
(5 AMP, 30 VDC MAX.)
(100 mA, 5 VDC MIN.)

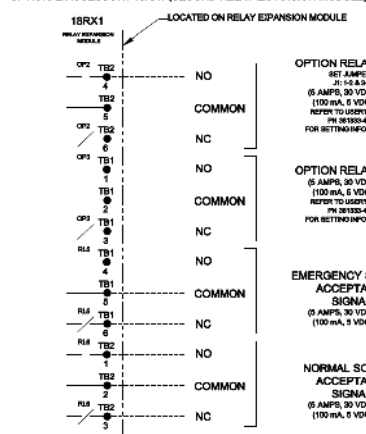
"OP2"
OPTIONAL
USES

RS-485 SERIAL COMMUNICATIONS OPTION
AVAILABLE WITH OPTIONAL ACCESSORY 1182 ADVANCED-FUNCTION SOFTWARE BUNDLE
REFER TO USER'S GUIDE PH 36133-430 FOR SETTING INFORMATION.



NOTES:
1. EARTH GROUND SHIELD AT HOST DEVICE ONLY.
2. FIELD WIRING: USE UL LISTED, STRANDED, TWISTED PAIR, OVERALL POL. SHIELD WITH STRANDED DRAIN WIRE SUITABLE FOR RS422 EQUIVALENT TO:
(STANDARD 80V) BELDEN 8042 OR 8029 OR ALPHA 8220C OR 822C
(PLATEM RATED) BELDEN 80720 OR 82720 OR ALPHA 58802

OPTIONAL ACCESSORY 18RX1 (SECOND RELAY EXPANSION MODULE)



OPTION RELAY "OP2"
SET AMPERES
J1: 1.5 & 3.4
(5 AMP, 30 VDC MAX.)
(100 mA, 5 VDC MIN.)
REFER TO USER'S GUIDE
PH 36133-430
FOR SETTING INFORMATION.

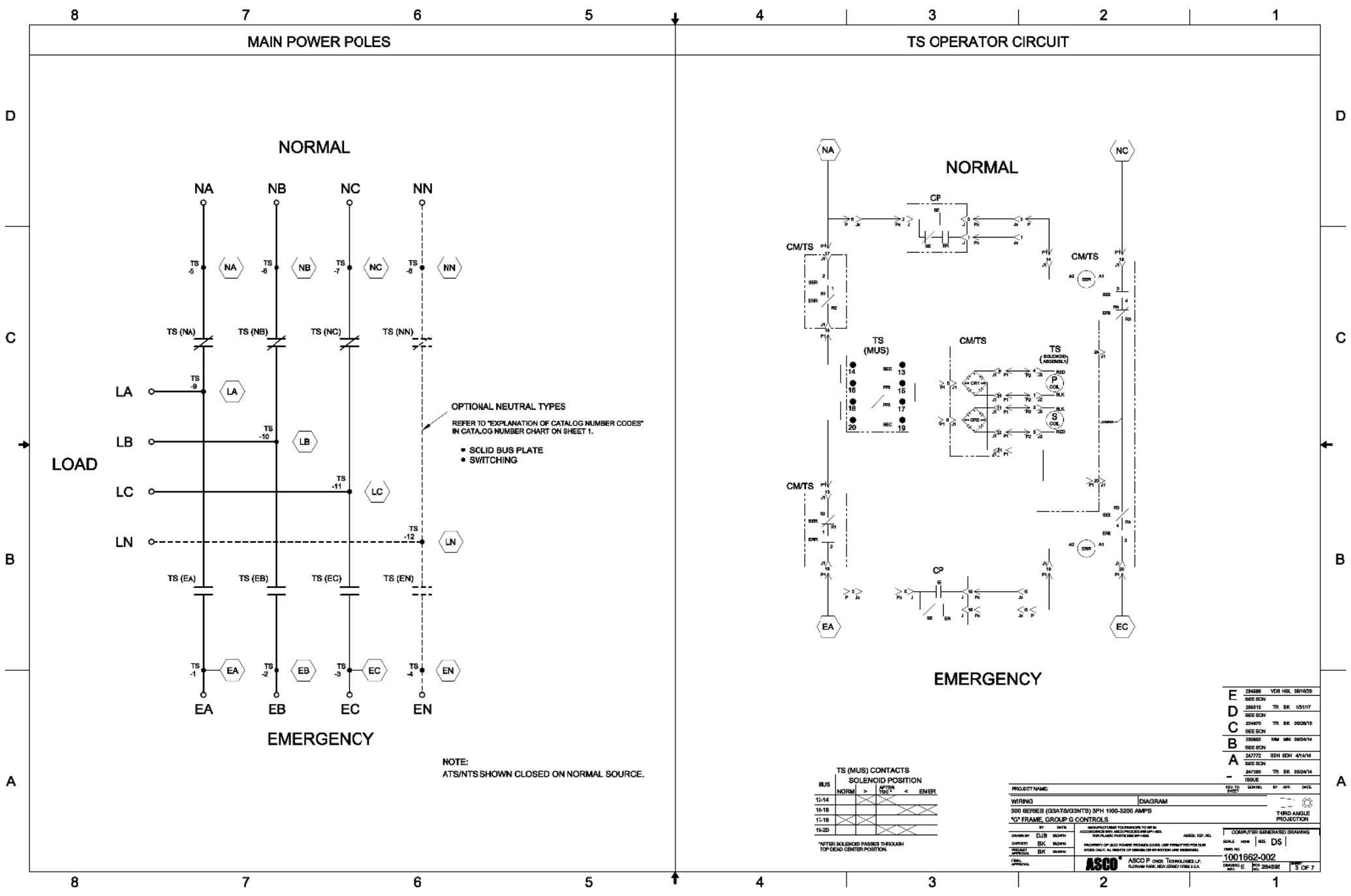
OPTION RELAY "OP3"
(5 AMP, 30 VDC MAX.)
(100 mA, 5 VDC MIN.)
REFER TO USER'S GUIDE
PH 36133-430
FOR SETTING INFORMATION.

EMERGENCY SOURCE
ACCEPTABLE
SIGNAL
(5 AMP, 30 VDC MAX.)
(100 mA, 5 VDC MIN.)

NORMAL SOURCE
ACCEPTABLE
SIGNAL
(5 AMP, 30 VDC MAX.)
(100 mA, 5 VDC MIN.)

E	254006	YOL HSL	05/10/05
D	254006	TR BK	1/5/1/17
C	254006	TR BK	05/28/13
B	254006	TR BK	05/28/14
A	254006	TR BK	05/28/14

PROJECT NAME	300 SERIES (33ATS/33NTS) 3PH 1100-3200 AMP
WIRING	GROUP G CONTROLS
DATE	10/16/02
BY	DS
CHECKED BY	DS
APPROVED BY	DS
COMPUTER GENERATED DRAWING	1001662-002
ASCO P. OVER TECHNOLOGIES LP	FLORHAM PARK, NEW JERSEY 07631, U.S.A.
ISSUE	2 OF 7

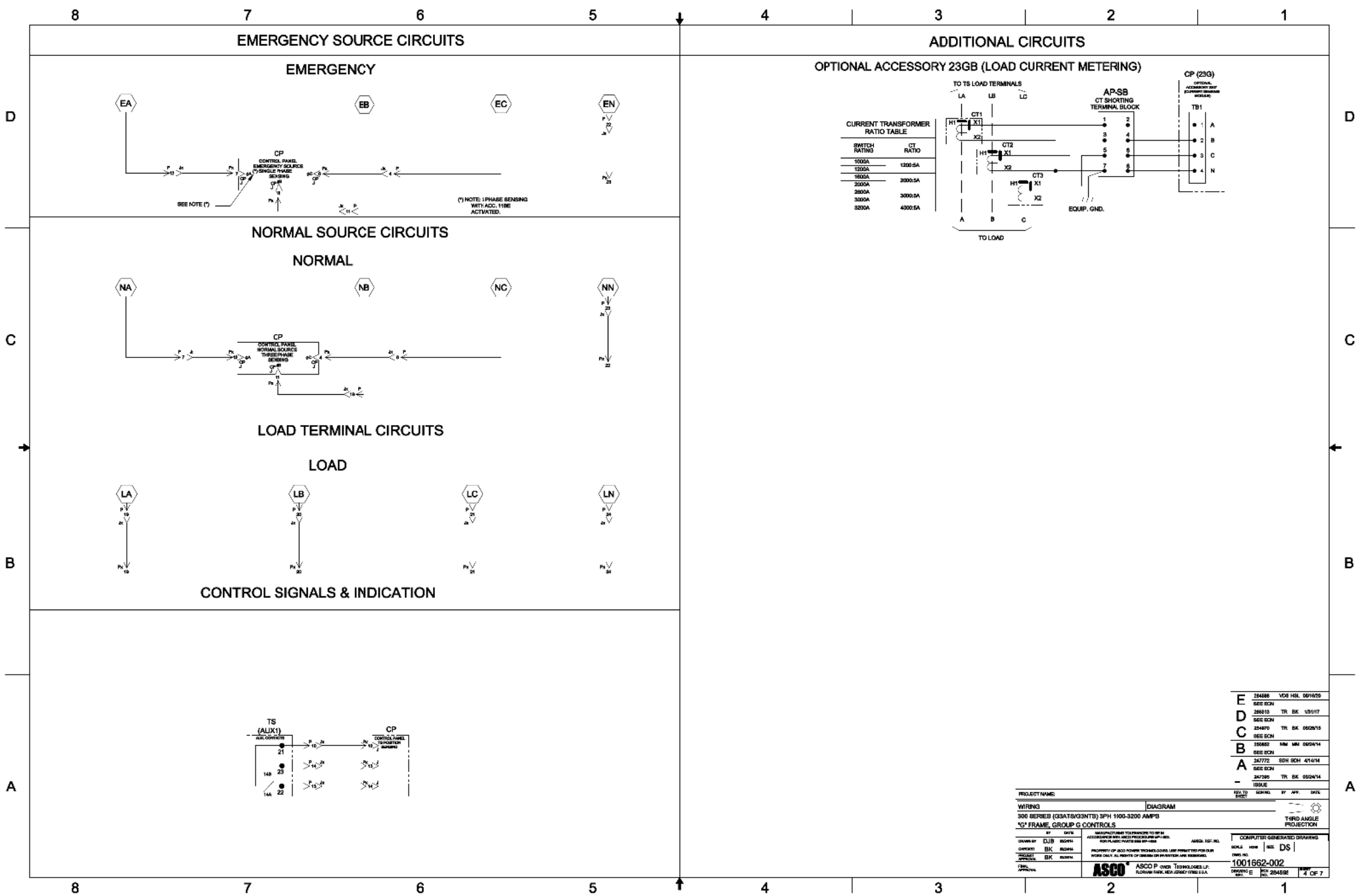


E	254086	YDS HSL 05/10/25
D	254087	TR BK 1/5/17
C	254088	TR BK 05/25/15
B	254089	TR BK 05/25/14
A	254090	TR BK 05/25/14

PROJECT NAME: 300 SERIES (33ATS/33NTS) 3PH 1100-3200 AMP
WIRING: "G" FRAME, GROUP G CONTROLS
DRAWN BY: DJS
CHECKED BY: BK
DATE: 05/25/14

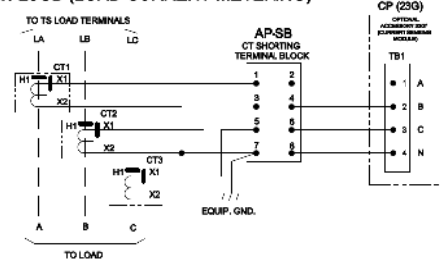
MANUFACTURED TO PERFORM TO THE
ASCO P-1000-3200 AMP
PROPERTY OF ASCO POWER TECHNOLOGIES, LLC. ALL RIGHTS RESERVED.
NO REUSE OR REPRODUCTION OF ANY PARTS OR INFORMATION IS PERMITTED WITHOUT
WRITTEN PERMISSION FROM ASCO POWER TECHNOLOGIES, LLC.

COMPUTER GENERATED DRAWING
SCALE: 1/8" = 1"
DATE: 05/25/14
1001662-002
ISSUE: 1
REV: 1
S OF 7



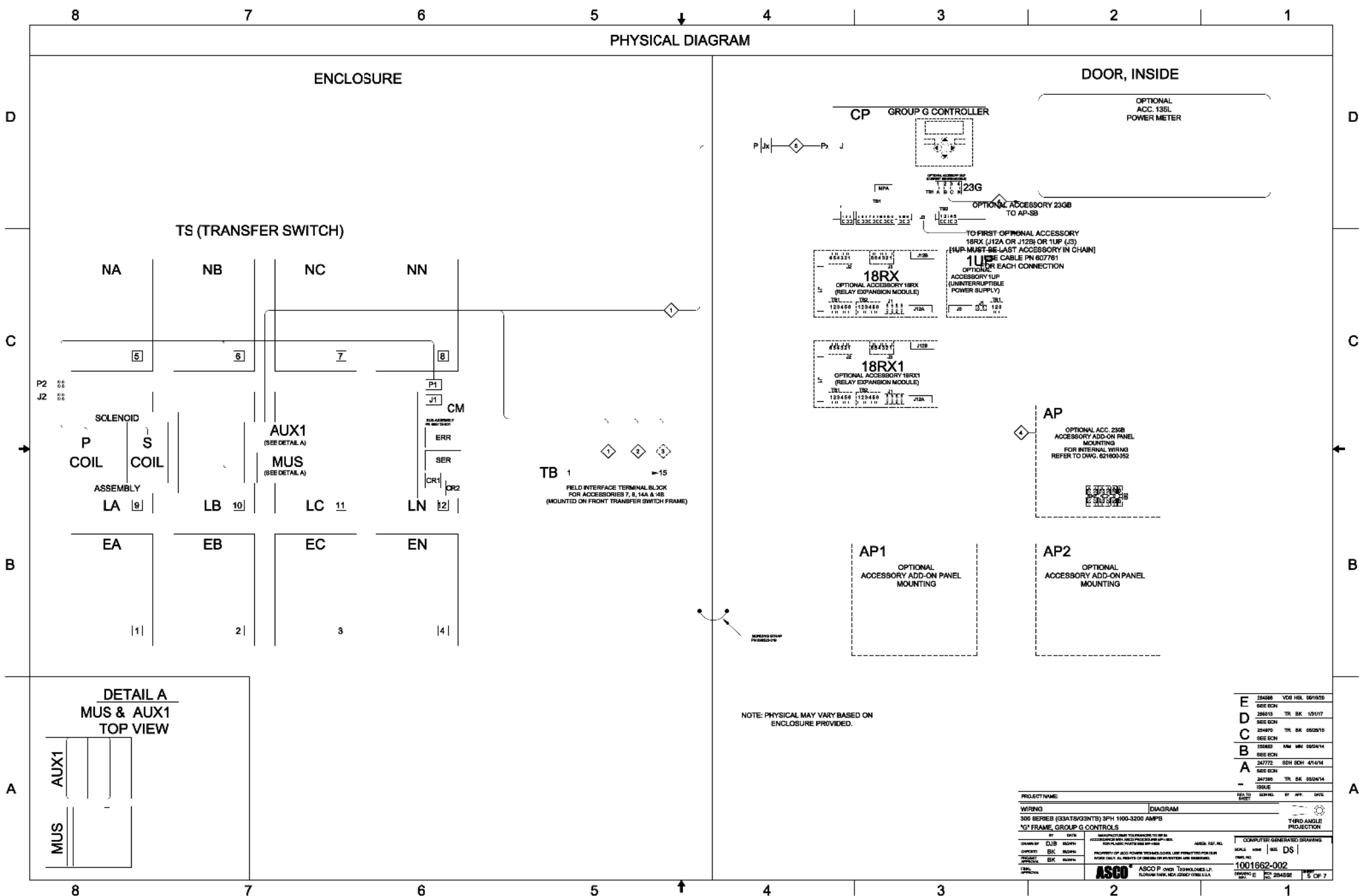
OPTIONAL ACCESSORY 23GB (LOAD CURRENT METERING)

CURRENT TRANSFORMER RATIO TABLE	
SWITCH RATING	CT RATIO
1000A	1200:5A
1250A	1500:5A
1500A	2000:5A
2000A	3000:5A
2500A	4000:5A



E	254000	YDS HSL 05/10/25
D	254010	TR BK 1/5/1/17
C	254020	TR BK 05/25/13
B	254030	TR BK 05/25/14
A	254040	TR BK 05/25/14

PROJECT NAME	1001662-002
WIRING	DIAGRAM
300 SERIES (33ATS/33NTS) 3PH 1100-3200 AMP	
300 FRAME, GROUP G CONTROLS	
BY	DATE
DESIGNED BY	DATE
CHECKED BY	DATE
APPROVED BY	DATE
ASCO	ASCO POWER TECHNOLOGIES LP
FLORHAM PARK, NEW JERSEY 07432, U.S.A.	
SCALE	1:1
DATE	10/1/2017
REV	1
4 OF 7	

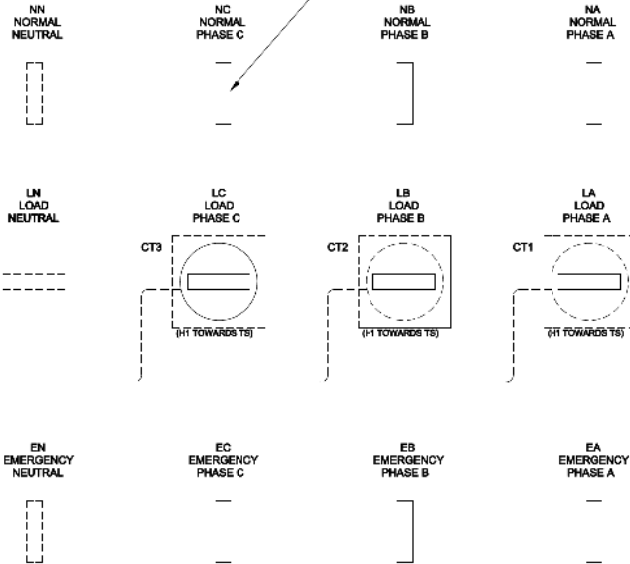


PHYSICAL DIAGRAM (CONTINUED)

REAR CONNECTED SWITCH (W/ACC. 40*B) 1000 - 3200 AMP. TS REAR VIEW

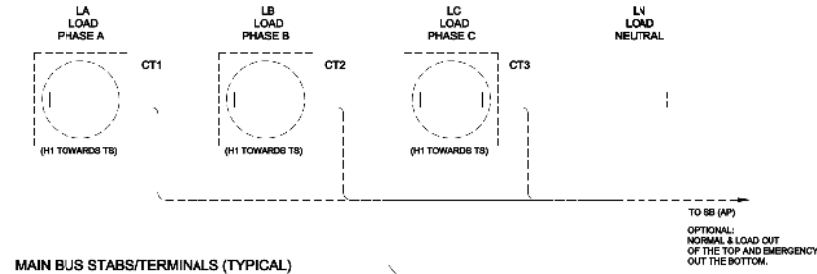
OPTIONAL ACCESSORY 23GB
(LOAD CURRENT METERING)

MAIN BUS STABS/TERMINALS (TYPICAL)

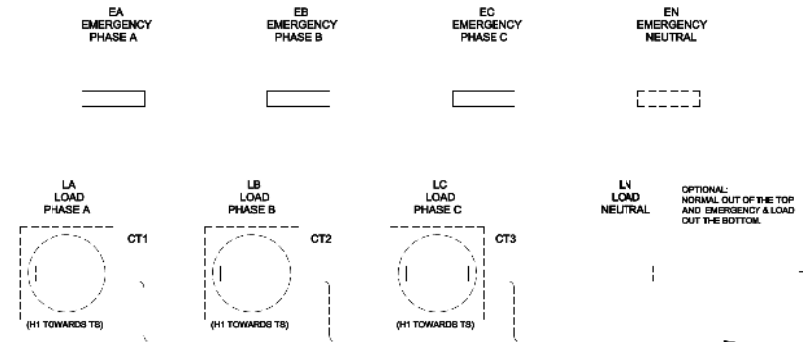


FRONT CONNECTED SWITCH (W/ACC. 40*R) 1000 - 2000 AMP. TS TOP VIEW

OPTIONAL ACCESSORY 23GB
(LOAD CURRENT METERING)



BOTTOM VIEW



E	354086	YDS HSL 06/19/25
D	354086	TR BK 1/5/17
C	354086	TR BK 05/25/15
B	354086	TR BK 05/25/15
A	354086	TR BK 05/25/15

PROJECT NAME	DIAGRAM	ISSUED TO	DATE
WIRING	300 SERIES (30ATS/30NTS) 3PH 1000-3200 AMP'S	ISSUED TO	DATE
"G" FRAME, GROUP G CONTROLS		ISSUED TO	DATE
BY	DATE	APPROVED	DATE
CHECKED	DATE	APPROVED	DATE
DESIGNED	DATE	APPROVED	DATE
PROJECT	DATE	APPROVED	DATE
APPROVAL	DATE	APPROVED	DATE

ASCO P OVER TECHNOLOGIES LP
FLOORING/PAVING/NEW JERSEY STATE U.S.A.

COMPUTER GENERATED DRAWINGS	SCALE	DATE	DS
1001662-002			
ISSUED TO	DATE	ISSUED TO	DATE

8 OF 7

D

C

B

A

D

C

B

A

8

7

6

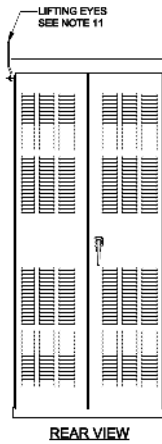
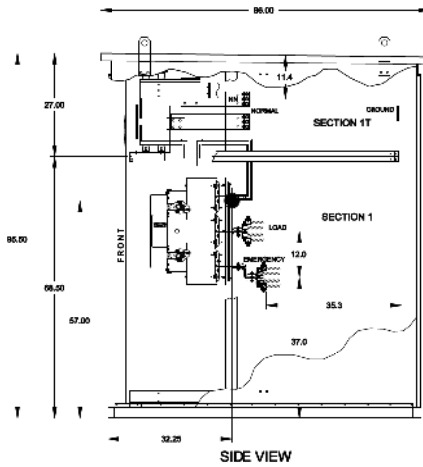
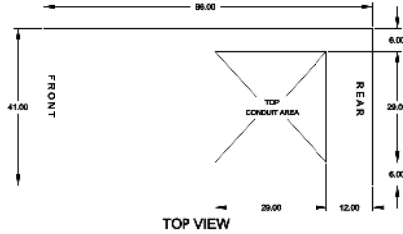
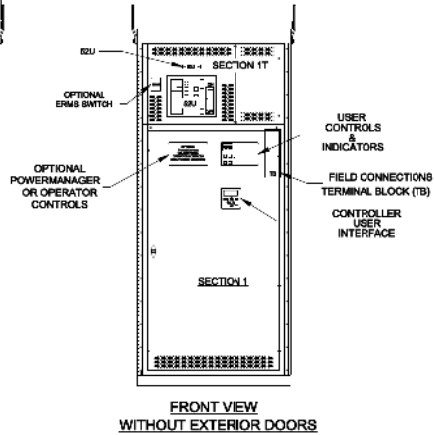
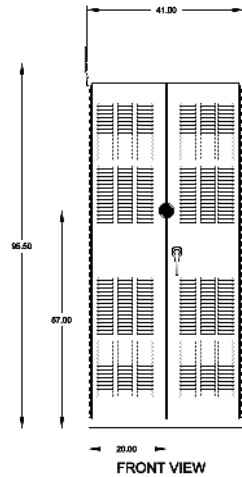
5

4

3

2

1



GENERAL NOTES

- FLOOR MOUNTED ENCLOSURE.
TYPE 3R CONSTRUCTED FROM CODE GAUGE STEEL.
FINISH: TYPE 3R, ANSI 61 GRAY POLYESTER SEMI GLOSS ELECTROSTATIC POWDER.
TYPE 3RX EXTERIOR CONSTRUCTED FROM CODE GAUGE STAINLESS STEEL.
(R) EXTERIOR CONSTRUCTED FROM TYPE 304 STAINLESS STEEL.
(S) EXTERIOR CONSTRUCTED FROM TYPE 316 STAINLESS STEEL.
- EXTERIOR DOORS HAVE PADLOCKABLE HANDLES WITH 3-POINT LATCH
- DESIGNED FOR FRONT & REAR ACCESS.
- RECOMMENDED CLEARANCES: FRONT: 36" REAR: 36"
- EXTERIOR VENTS ARE SUPPLIED WITH POLYESTER DUST FILTERS.
- LIFTING PLATES: SECTIONS ARE SUPPLIED WITH LIFTING PLATES. INSPECT PLATES FOR DAMAGE AND TORQUE BOLTS TO 45 FT LBS BEFORE USE. REFER TO ANSINEMA PB 2.1 FOR PROPER HANDLING OF EQUIPMENT. AFTER INSTALLATION OF SECTION, REMOVE LIFTING PLATES. REINSTALL BOLTS INTO EXTERIOR HOLES AND TORQUE TO APPROXIMATELY 20 FT LBS.
- SECTION 1 AND SECTION 1T SHIP AS ONE UNIT.
- CENTER OF GRAVITY
- APPROXIMATE WEIGHT: 3250LB.

SYSTEM NOTES

- SYSTEM RATING: 2500 AMPS, 3000 AMPS, 36, 4W.
SHORT CIRCUIT RATING: 100,000 RMS SYM AMPERES @ 480V.
THE EMERGENCY SOURCE MUST BE PROTECTED BY AREMOTEC OVERCURRENT PROTECTION DEVICE AS LISTED ON THE MARKINGS OR THE TRANSFER SWITCH.
- ALL BUS IS SILVER-PLATED COPPER, BASED ON 800A PER SQ. IN. DENSITY.
- GROUND BUS: 20% RATED.
- NEUTRAL BUS: 100% RATED.
- APPLICABLE LABELS: U.L. 891- SUITABLE ONLY FOR USE AS SERVICE EQUIPMENT.

TRANSFER SWITCH

- G FRAME AUTOMATIC TRANSFER SWITCH 2500A - 3000A
- TRANSFER SWITCH RATING: 2500 AMPS, 3000 AMPS.
SHORT CIRCUIT RATING WHEN PROTECTED BY A CIRCUIT BREAKER
TIME RESPONSE, MAXIMUM 0.05 SECONDS: 100,000 RMS SYM @ 480V
- A FULL RATED NEUTRAL CONNECTION FOR EACH SOURCE AND THE LOAD IS OPTIONAL. WHEN PROVIDED IT IS IN ONE OF THE FOLLOWING FORMATS.
A. SOLID NEUTRAL
B. SWITCHED NEUTRAL POLE
C. OVERLAPPING NEUTRAL POLE
- U.L. 1008

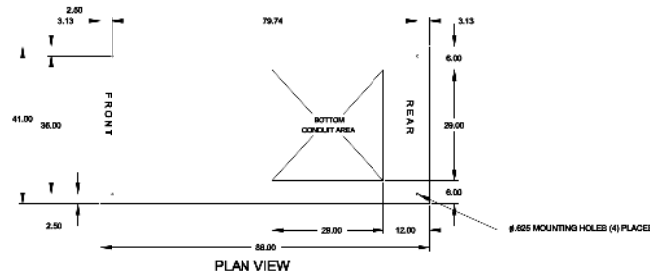
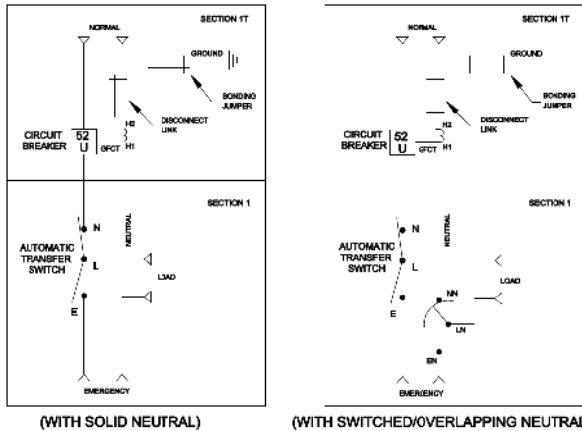
TERMINATIONS 2500-3000 AMPS

- SUPPLIED WITH MECHANICAL (SCREW TYPE) LUGS FOR CU/AL CABLE.
NORMAL: (12) 1/0 - 800MCM PER PHASE & NEUTRAL
LOAD: (12) 1/0 - 800MCM PER PHASE & NEUTRAL
EMERGENCY: (12) 1/0 - 800MCM PER PHASE & NEUTRAL
GROUND: (25) 1/0 - 600MCM
A. SUITABLE WIRE BENDING SPACE IS PROVIDED AS PER NEC.
- OPTIONAL LUGS MAY BE SUPPLIED.

SERVICE ENTRANCE BREAKER: ITEM 52U

- SQUARE "D" 100% RATED, TYPE NW, 3000AF/3000AT OR 2500AF/2500AT STATIONARY MOUNTED
MANUALLY OPERATED, WITH LONG DELAY, SHORT DELAY, INSTANTANEOUS AND GROUND FAULT TRIP SETTINGS
- OPTIONAL ENERGY REDUCTION MAINTENANCE SETTING (ERMS) SYSTEM MAY BE SUPPLIED.
- U.L. 489

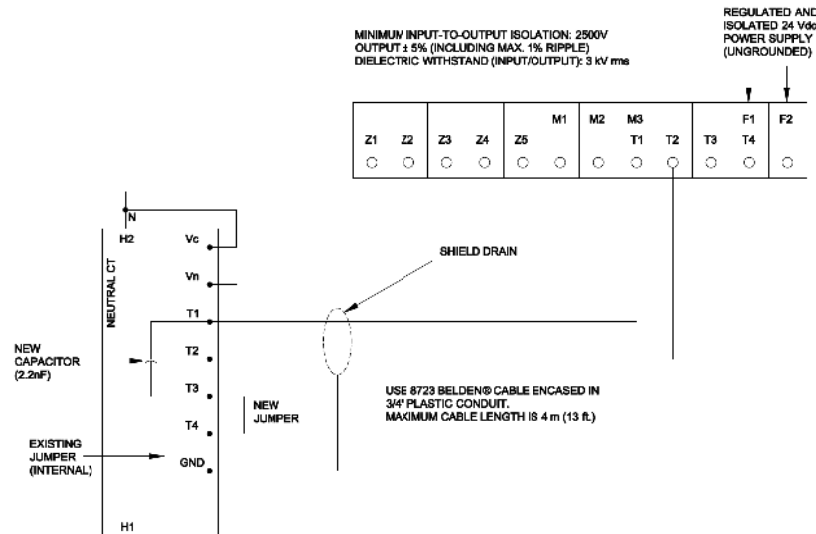
ONE LINE DIAGRAMS



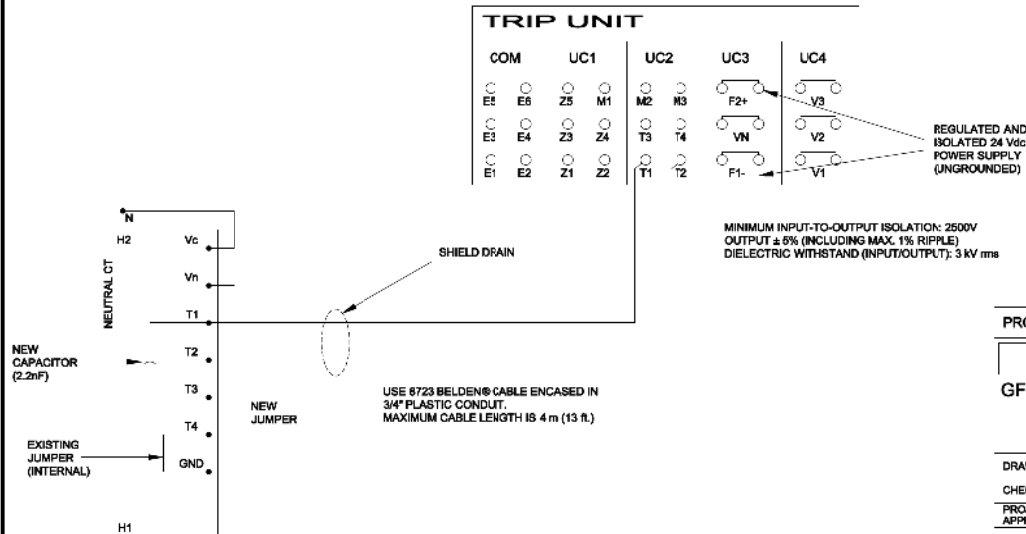
PROJECT NAME:		MOUNTING	
OUTLINE		GAUS 2500A - 3000A, NW SERVICE ENTRANCE BREAKER ON NORMAL	
TYPE 3R/3RX 96 X 41 X 86			
DESIGNED BY	REVIEWED BY	DATE	DATE
754577-053			
ASCO P OVER TECHNOLOGIES, L.P.		ASCO P OVER TECHNOLOGIES, L.P.	
754577-053		754577-053	
754577-053		754577-053	

G F E D C B A	207480	10/10/10	10/10/10
	207480	10/10/10	10/10/10
	207480	10/10/10	10/10/10
	207480	10/10/10	10/10/10
G F E D C B A	207480	10/10/10	10/10/10
	207480	10/10/10	10/10/10
	207480	10/10/10	10/10/10
	207480	10/10/10	10/10/10
G F E D C B A	207480	10/10/10	10/10/10
	207480	10/10/10	10/10/10
	207480	10/10/10	10/10/10
	207480	10/10/10	10/10/10

WIRING SCHEMATIC FOR POWERPACT P- & R-FRAME CIRCUIT BREAKERS



WIRING SCHEMATIC FOR 800-3000 A NT/NW CIRCUIT BREAKERS

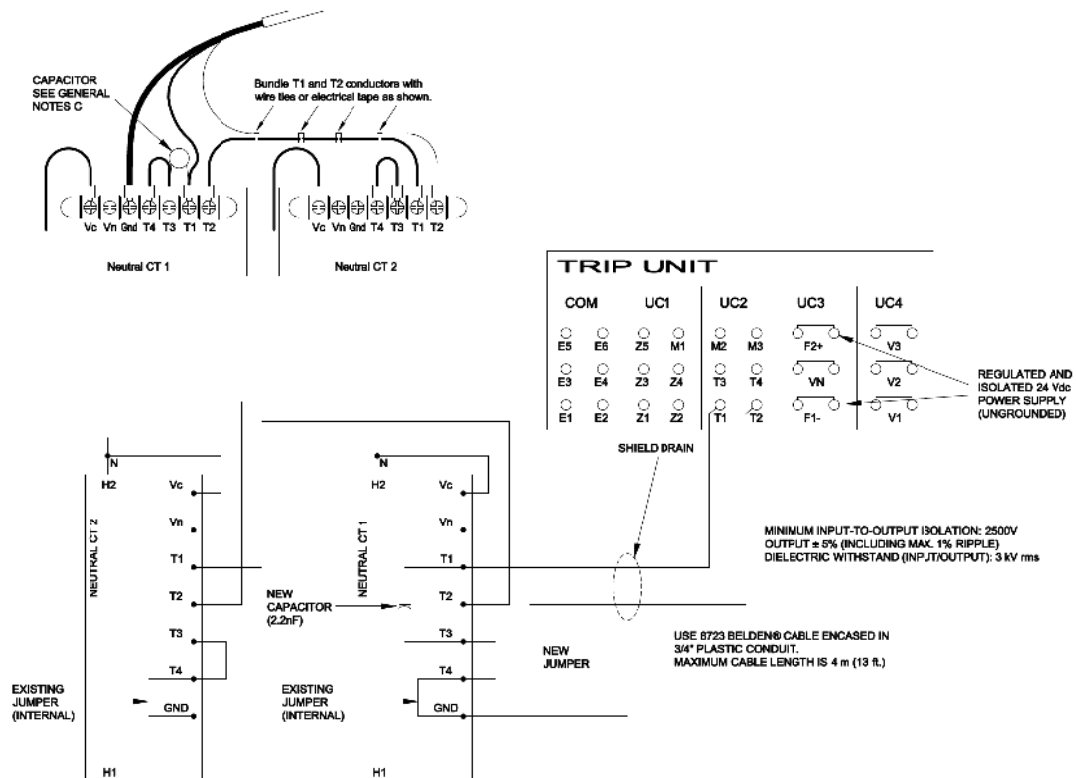


F	257650	TRD	MM	10/23/15
	SEE ECN			
E	227403	TRD	WK	05/13/10
	SEE ECN			
D	226452	AE	BK	03/16/10
	SEE ECN			
C	223197	DAJ	BK	10/20/09
	SEE ECN			
B	211947	MJB	BK	2/7/07
	SEE ECN			
-	167055	CC	BK	05/13/04
	ISSUE			

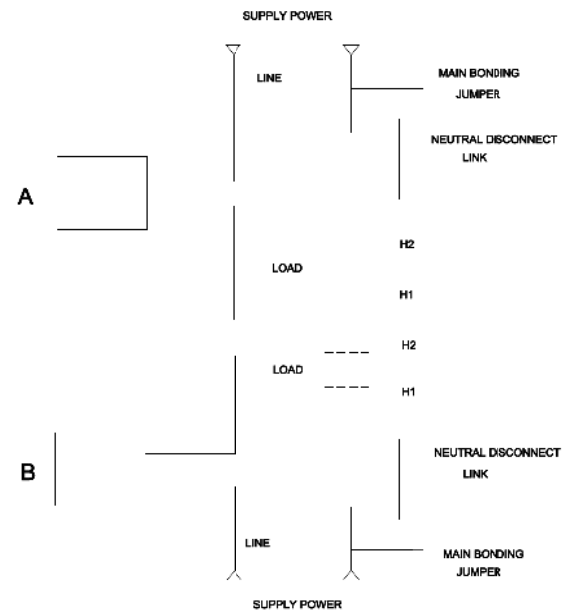
PROJECT NAME:				REV. TO SHEET	ECN NO.	BY	APP.	DATE
GFS CIRCUITRY.								
DRAWN BY	CC	DATE	05/13/04	MANUFACTURING TOLERANCES TO BE IN ACCORDANCE WITH ASCO PROCEDURE MP-1-003. FOR PLASTIC PARTS SEE MP-4-055		ASSEM. REF. NO.		
CHECKED	BK	DATE	05/13/04	PROPERTY OF ASCO POWER TECHNOLOGIES. USE PERMITTED FOR OUR WORK ONLY. ALL RIGHTS OF DESIGN OR INVENTION ARE RESERVED.				
PROJECT APPROVAL	BK	DATE	05/13/04					
FINAL APPROVAL								
				COMPUTER GENERATED DRAWING				
				SCALE	SIZE	BS		
				DWG. NO.		758574		
				DRAWING REV.	ECN NO.	257650	SHEET 1 OF 2	

ASCO® ASCO POWER TECHNOLOGIES, L.P.
FLORHAM PARK, NEW JERSEY 07932 U.S.A.

WIRING SCHEMATIC FOR 3200-6000 A NW CIRCUIT BREAKERS



LINE DIAGRAM FOR NW BREAKER



F	257650	TRD	MM	10/23/15
SEE ECN				
E	227403	TRD	WK	05/13/10
SEE ECN				
D	226452	AE	BK	03/16/10
SEE ECN				
C	223197	DAJ	BK	10/20/09
SEE ECN				
B	211947	MJB	BK	2/7/07
SEE ECN				
-	167055	CC	BK	05/13/04
ISSUE				

GENERAL NOTES

- IF LOAD IS CONNECTED TO LOWER END OF CIRCUIT BREAKER, CONNECT THE LOAD NEUTRAL TO THE H1 END OF THE NEUTRAL CURRENT TRANSFORMER.
- IF SUPPLY POWER IS CONNECTED TO THE LOWER END OF THE CIRCUIT BREAKER, CONNECT THE SUPPLY NEUTRAL TO THE H1 END OF THE NEUTRAL CURRENT TRANSFORMER.
- CAPACITOR 2.2NF IS PROVIDED WITH CIRCUIT BREAKER.

PROJECT NAME:

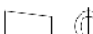
GFS CIRCUITRY.

DRAWN BY	CC	05/13/04
CHECKED	BK	05/13/04
PROJECT APPROVAL	BK	05/13/04
FINAL APPROVAL		

MANUFACTURING TOLERANCES TO BE IN ACCORDANCE WITH ASCO PROCEDURE MP-4-003. FOR PLASTIC PARTS SEE MP-4-055

PROPERTY OF ASCO POWER TECHNOLOGIES. USE PERMITTED FOR OUR WORK ONLY. ALL RIGHTS OF DESIGN OR INVENTION ARE RESERVED.

ASCO® ASCO POWER TECHNOLOGIES, L.P.
FLORHAM PARK, NEW JERSEY 07932 U.S.A.

REV. TO SHEET	ECN NO.	BY	APP.	DATE
				
THIRD ANGLE PROJECTION				
COMPUTER GENERATED DRAWING				
SCALE	SIZE	BS		
DWG. NO.				
758574				
DRAWING REV.	ECN NO.	257650		SHEET
				2 OF 2