

## Woodstock D-Frame & J-Frame Stock

### Transfer Switch Details

#3	ATS	AMPS: 0200	QTY: 2
Product	: Series 300	Catalog Number	: D03AUSB30200CGXM
Service Voltage / Hz	: 208V/60Hz	Optional Accessories	: 11BE,44G
Bypass Isolation	: Not Applicable	Product Description	: 300 Series, Automatic Service Entrance Transfer Switch
No. of Switched Poles: 4	: 4	Neutral Configuration	: Switched [B]
Withstand Rating:	: See WCR Table Below	No. of Cables & Lug Size	: See Applicable Outline Drawing
Frame = D, Switch Rating = 0200, Series = 300			
Enclosure	: 3R(M)-UL Type 3R secure double door enclosure (See Disclaimer 3)	Service	: Three Phase, 4-wire
Extended Warranty	: Not Included	Markings	:

#	ACCESSORY DESCRIPTIONS	
	Accessory Code	Description
1	11BE	Adds the following features to the Group G controller: (1) Serial RS-485 Modbus Communications (2) Multi-Schedule Engine Exerciser (3) a 300 Entry Event Log and (4) a common alarm output function. When applied on 3-phase systems it also enables: (1) 3-Phase Emergency Source VLL sensing (2) Phase Rotation Monitoring (3) Emergency Source VLL Unbalance Monitoring.
2	44G	Strip heater w/ thermostat, wired to load terminals: 208-600 volts



C

B

A



D	518513	MCH	5-27-25
	SEE ECH		
C	518500	TAA	5-3-25
	SEE ECH		
B	503851	LAM	MCH 5803024
	SEE ECH		
A	505783	NRK	MCH 1005023
	SEE ECH		
-	503388	FPF	MCH 26-11-23
	SEE ECH		
REVISED	BY	DATE	
1			
THIRD ANGLE PROJECTION			
COMPUTER GENERATED DRAWING			
SCALE	BY	REV	DS
DWG NO.			
1522770-003			
DRAWN BY	CHK	518513	1 OF 1





C



B



### **K1 (SECOND RELAY EXPANSION MODULE)**



**OPTION RELAY "OP3"**  
(5 AMPS, 30 VDC MAX.)  
(100 mA, 5 VDC MIN.)

REFER TO USER'S GUIDE  
PN 381333-400  
FOR SETTING INFORMATION.

**EMERGENCY SOURCE  
ACCEPTABLE  
SIGNAL**  
(5 AMPS, 30 VDC MAX.)  
(100 mA, 5 VDC MIN.)

**NORMAL SOURCE  
ACCEPTABLE  
SIGNAL**  
(5 AMP, 30 VDC MAX.)  
(100 mA, 5 VDC MIN.)

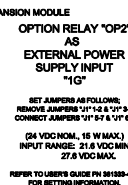


**OPTION RELAY "OP3"**  
(5 AMP/3, 30 VDC MAX.)  
(100 mA, 5 VDC MIN.)

REFER TO USER'S GUIDE  
PN 381333-400  
FOR SETTING INFORMATION.

**EMERGENCY SOURCE  
ACCEPTABLE  
SIGNAL**  
(5 AMPs, 30 VDC MAX.)  
(100 mA, 5 VDC MIN.)

**NORMAL SOURCE  
ACCEPTABLE  
SIGNAL**  
(5 AMPS, 30 VDC MAX.)  
(100 mA, 5 VDC MIN.)

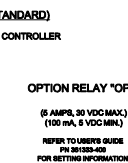


**OPTION RELAY "OP2"  
AS  
EXTERNAL POWER  
SUPPLY INPUT  
"1G"**

**SET JUMPERS AS FOLLOWS;  
REMOVE JUMPERS "J1" 1-2 & "J1" 3-4  
CONNECT JUMPERS "J1" 5-7 & "J1" 6-8**

**(24 VDC NOM., 15 W MAX.)  
INPUT RANGE: 21.6 VDC MIN.  
27.6 VDC MAX.**

**REFER TO USER'S GUIDE PN 361339-  
FOR SETTING INFORMATION**



**OPTION RELAY "OR"**  
(5 AMPS, 30 VDC MAX.)  
(100 mA, 5 VDC MIN.)

REFER TO USER'S GUIDE  
PN 381333-400  
FOR SETTING INFORMATION

**RS485 SERIAL COMMUNICATIONS OPTION**  
AVAILABLE WITH OPTIONAL ACCESSORY 11BE: ADVANCED-FUNCTION SOFTWARE BUNDLE  
REFER TO USER'S GUIDE PN 36133-409 FOR SETTING INFORMATION.



TO OTHER ASCO SE  
COMMUNICATION  
DEVICES



**NOTES:**

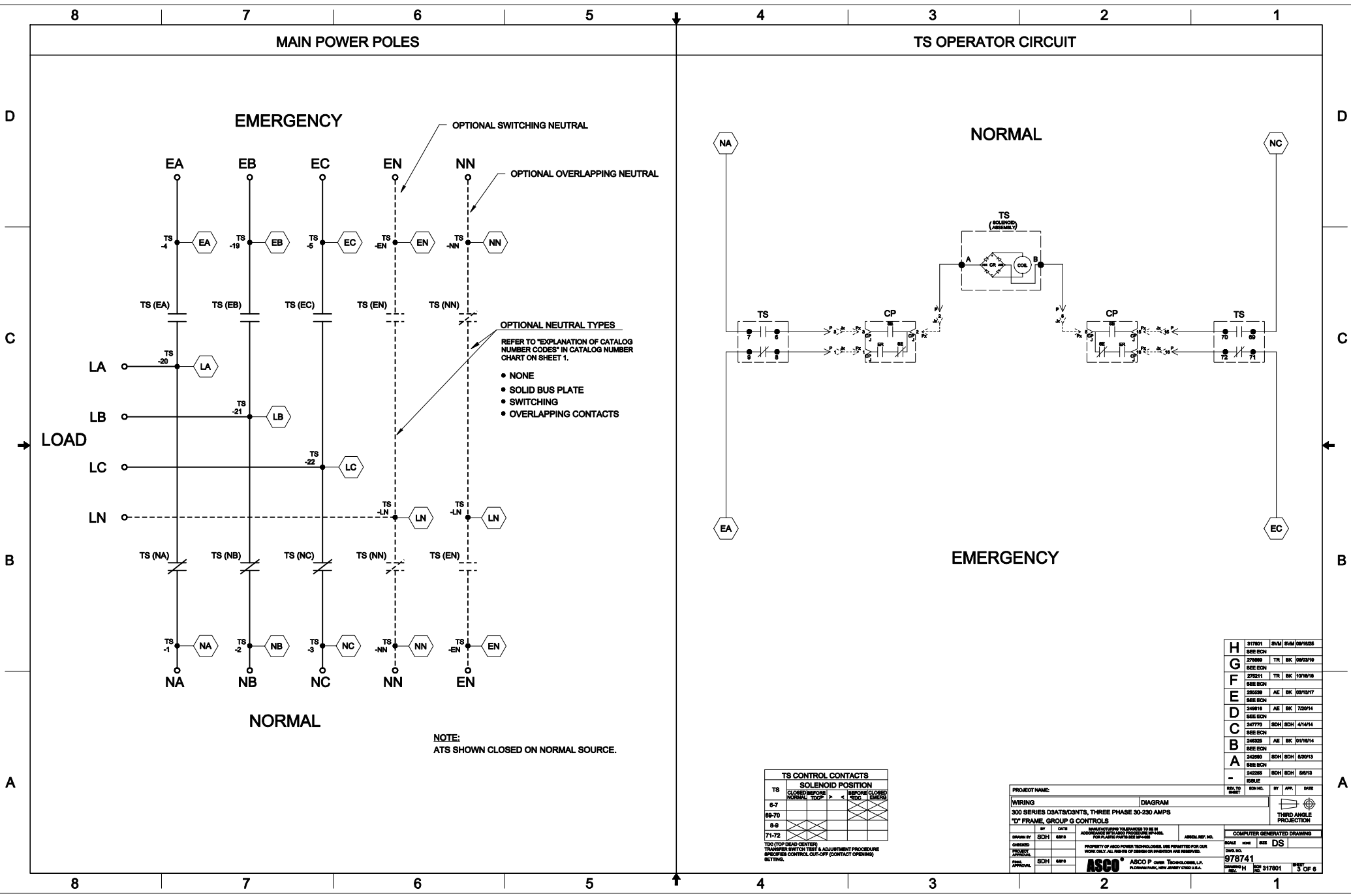
1. EARTH GROUND SHIELD AT HOST DEVICE ONLY.
2. FIELD WIRING: USE UL LISTED, STRANDED, TWISTED PAIRS, OVERALL FOIL SHIELD WITH STRANDED DRAIN WIRE SUITABLE FOR RS422 EQUIVALENT TO:

(STANDARD 80°C) BELDEN 9842 OR 9829  
OR ALPHA 6222C OR 6222C

(PLENUM RATED) BELDEN 80729 OR 82729  
OR ALPHA 59002

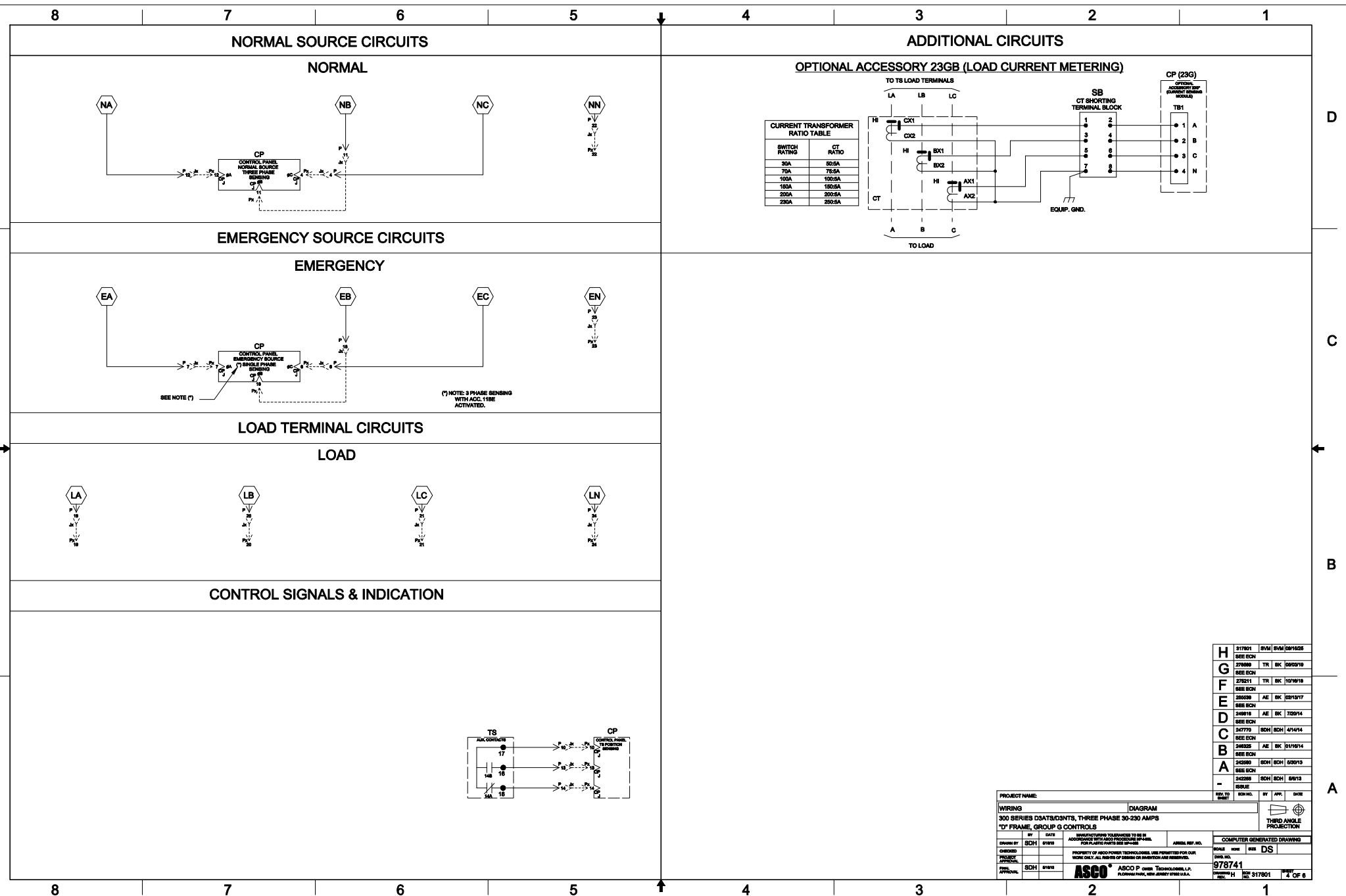
<b>H</b>	317801	SVM	SVM	09/16/25
	SEE ECH			
<b>G</b>	278598	TR	BK	05/03/19
	SEE ECH			
<b>F</b>	278211	TR	BK	10/16/18
	SEE ECH			
<b>E</b>	280538	AE	BK	02/13/17
	SEE ECH			
<b>D</b>	249816	AE	BK	7/22/14
	SEE ECH			
<b>C</b>	247770	SDH	SDH	4/14/14
	SEE ECH			
<b>B</b>	246325	AE	BK	01/15/14
	SEE ECH			
<b>A</b>	242888	SDH	SDH	5/30/13
	SEE ECH			

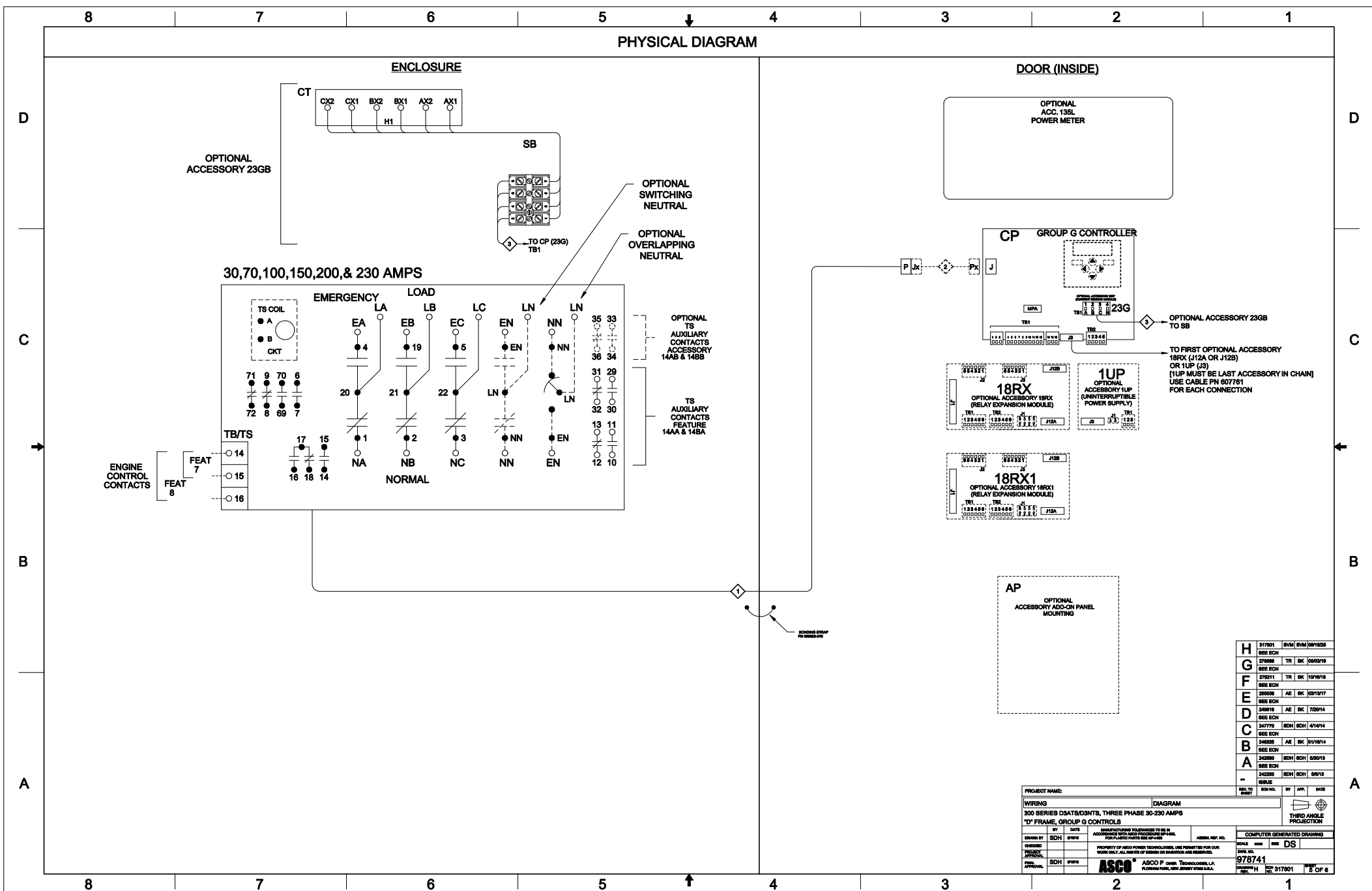
PROJECT NAME:		SHEET NO.		BY		APP.		DATE	
WIRING		DIAGRAM						 THIRD ANGLE PROJECTION	
300 SERIES DSATS/SDNTS, THREE PHASE 30-230 AMPS <b>"D" FRAME, GROUP C CONTROLS</b>									
DESIGNED BY	DATE	MANUFACTURING TOLERANCES TO BE AS SPECIFIED BY THE ASCO PROCEDURE 10-68				COMPUTER GENERATED DRAWING			
DRAWN BY	SDH	FOR PLASTIC PARTS SEE 10-68-02				SCALE SIZE <b>DS</b>			
CHECKED BY APPROVAL	SDH	PROPERTY OF ASCO POWER TECHNOLOGIES, INC. PERMITTED FOR YOUR WORK ONLY. ALL RIGHTS OF INVENTOR ARE RESERVED.				DATE NO. <b>9/78/741</b>			
APPROVAL	SDH	 <b>ASCO P</b> TECHNOLOGIES, INC. FLORENCE, PA. NEW BRANCH U.S.A.				DRAWN BY HENRY 1371071 2 OF 6			



NOTE:  
ATS SHOWN CLOSED ON NORMAL SOURCE.

TS CONTROL CONTACTS			
SOLENOID POSITION			
TS	CLOSED/OPEN	TRIP/RESET	TRIP/RESET
6-7	NO	NC	NC
8-9	NO	NC	NC
10-11	NO	NC	NC
12-13	NO	NC	NC
14-15	NO	NC	NC
16-17	NO	NC	NC
18-19	NO	NC	NC
20-21	NO	NC	NC
22-23	NO	NC	NC
24-25	NO	NC	NC
26-27	NO	NC	NC
28-29	NO	NC	NC
30-31	NO	NC	NC
32-33	NO	NC	NC
34-35	NO	NC	NC
36-37	NO	NC	NC
38-39	NO	NC	NC
40-41	NO	NC	NC
42-43	NO	NC	NC
44-45	NO	NC	NC
46-47	NO	NC	NC
48-49	NO	NC	NC
50-51	NO	NC	NC
52-53	NO	NC	NC
54-55	NO	NC	NC
56-57	NO	NC	NC
58-59	NO	NC	NC
60-61	NO	NC	NC
62-63	NO	NC	NC
64-65	NO	NC	NC
66-67	NO	NC	NC
68-69	NO	NC	NC
70-71	NO	NC	NC
72-73	NO	NC	NC
74-75	NO	NC	NC
76-77	NO	NC	NC
78-79	NO	NC	NC
80-81	NO	NC	NC
82-83	NO	NC	NC
84-85	NO	NC	NC
86-87	NO	NC	NC
88-89	NO	NC	NC
90-91	NO	NC	NC
92-93	NO	NC	NC
94-95	NO	NC	NC
96-97	NO	NC	NC
98-99	NO	NC	NC
100-101	NO	NC	NC
102-103	NO	NC	NC
104-105	NO	NC	NC
106-107	NO	NC	NC
108-109	NO	NC	NC
110-111	NO	NC	NC
112-113	NO	NC	NC
114-115	NO	NC	NC
116-117	NO	NC	NC
118-119	NO	NC	NC
120-121	NO	NC	NC
122-123	NO	NC	NC
124-125	NO	NC	NC
126-127	NO	NC	NC
128-129	NO	NC	NC
130-131	NO	NC	NC
132-133	NO	NC	NC
134-135	NO	NC	NC
136-137	NO	NC	NC
138-139	NO	NC	NC
140-141	NO	NC	NC
142-143	NO	NC	NC
144-145	NO	NC	NC
146-147	NO	NC	NC
148-149	NO	NC	NC
150-151	NO	NC	NC
152-153	NO	NC	NC
154-155	NO	NC	NC
156-157	NO	NC	NC
158-159	NO	NC	NC
160-161	NO	NC	NC
162-163	NO	NC	NC
164-165	NO	NC	NC
166-167	NO	NC	NC
168-169	NO	NC	NC
170-171	NO	NC	NC
172-173	NO	NC	NC
174-175	NO	NC	NC
176-177	NO	NC	NC
178-179	NO	NC	NC
180-181	NO	NC	NC
182-183	NO	NC	NC
184-185	NO	NC	NC
186-187	NO	NC	NC
188-189	NO	NC	NC
190-191	NO	NC	NC
192-193	NO	NC	NC
194-195	NO	NC	NC
196-197	NO	NC	NC
198-199	NO	NC	NC
200-201	NO	NC	NC
202-203	NO	NC	NC
204-205	NO	NC	NC
206-207	NO	NC	NC
208-209	NO	NC	NC
210-211	NO	NC	NC
212-213	NO	NC	NC
214-215	NO	NC	NC
216-217	NO	NC	NC
218-219	NO	NC	NC
220-221	NO	NC	NC
222-223	NO	NC	NC
224-225	NO	NC	NC
226-227	NO	NC	NC
228-229	NO	NC	NC
230-231	NO	NC	NC
232-233	NO	NC	NC
234-235	NO	NC	NC
236-237	NO	NC	NC
238-239	NO	NC	NC
240-241	NO	NC	NC
242-243	NO	NC	NC
244-245	NO	NC	NC
246-247	NO	NC	NC
248-249	NO	NC	NC
250-251	NO	NC	NC
252-253	NO	NC	NC
254-255	NO	NC	NC
256-257	NO	NC	NC
258-259	NO	NC	NC
260-261	NO	NC	NC
262-263	NO	NC	NC
264-265	NO	NC	NC
266-267	NO	NC	NC
268-269	NO	NC	NC
270-271	NO	NC	NC
272-273	NO	NC	NC
274-275	NO	NC	NC
276-277	NO	NC	NC
278-279	NO	NC	NC
280-281	NO	NC	NC
282-283	NO	NC	NC
284-285	NO	NC	NC
286-287	NO	NC	NC
288-289	NO	NC	NC
290-291	NO	NC	NC
292-293	NO	NC	NC
294-295	NO	NC	NC
296-297	NO	NC	NC
298-299	NO	NC	NC
300-301	NO	NC	NC
302-303	NO	NC	NC
304-305	NO	NC	NC
306-307	NO	NC	NC
308-309	NO	NC	NC
310-311	NO	NC	NC
312-313	NO	NC	NC
314-315	NO	NC	NC
316-317	NO	NC	NC
318-319	NO	NC	NC
320-321	NO	NC	NC
322-323	NO	NC	NC
324-325	NO	NC	NC
326-327	NO	NC	NC
328-329	NO	NC	NC
330-331	NO	NC	NC
332-333	NO	NC	NC
334-335	NO	NC	NC
336-337	NO	NC	NC
338-339	NO	NC	NC
340-341	NO	NC	NC
342-343	NO	NC	NC
344-345	NO	NC	NC
346-347	NO	NC	NC
348-349	NO	NC	NC
350-351	NO	NC	NC
352-353	NO	NC	NC
354-355	NO	NC	NC
356-357	NO	NC	NC
358-359	NO	NC	NC
360-361	NO	NC	NC
362-363	NO	NC	NC
364-365	NO	NC	NC
366-367	NO	NC	NC
368-369	NO	NC	NC
370-371	NO	NC	NC
372-373	NO	NC	NC
374-375	NO	NC	NC
376-377	NO	NC	NC
378-379	NO	NC	NC
380-381	NO	NC	NC
382-383	NO	NC	NC
384-385	NO	NC	NC
386-387	NO	NC	NC
388-389	NO	NC	NC
390-391	NO	NC	NC
392-393	NO	NC	NC
394-395	NO	NC	NC
396-397	NO	NC	NC
398-399	NO	NC	NC
400-401	NO	NC	NC
402-403	NO	NC	NC
404-405	NO	NC	NC
406-407	NO	NC	NC
408-409	NO	NC	NC
410-411	NO	NC	NC
412-413	NO	NC	NC
414-415	NO	NC	NC
416-417	NO	NC	NC
418-419	NO	NC	NC
420-421	NO	NC	NC
422-423	NO	NC	NC
424-425	NO	NC	NC
426-427	NO	NC	NC
428-429	NO	NC	NC
430-431	NO	NC	NC
432-433	NO	NC	NC
434-435	NO	NC	NC
436-437	NO	NC	NC
438-439	NO	NC	NC
440-441	NO	NC	NC
442-443	NO	NC	NC
444-445	NO	NC	NC
446-447	NO	NC	NC
448-449	NO	NC	NC
450-451	NO	NC	NC
452-453	NO	NC	NC
454-455	NO	NC	NC
456-457	NO	NC	NC
458-459	NO	NC	NC
460-461	NO	NC	NC
462-463	NO	NC	NC
464-465	NO	NC	NC
466-467	NO	NC	NC
468-469	NO	NC	NC
470-471	NO	NC	NC
472-473	NO	NC	NC
474-475	NO	NC	NC
476-477	NO	NC	NC
478-479	NO	NC	NC
480-481	NO	NC	NC
482-483	NO	NC	NC
484-485	NO	NC	NC
486-487	NO	NC	NC
488-489	NO	NC	NC
490-491	NO	NC	NC
492-493	NO	NC	NC
494-495	NO	NC	NC
496-497	NO	NC	NC
498-499	NO	NC	NC
500-501	NO	NC	NC
502-503	NO	NC	NC
504-505	NO	NC	NC
506-507	NO	NC	NC
508-509	NO	NC	NC
510-511	NO	NC	NC
512-513	NO	NC	NC
514-515	NO	NC	NC
516-517	NO	NC	NC
518-519	NO	NC	NC
520-521	NO	NC	NC
522-523	NO	NC	NC
524-525	NO	NC	NC
526-527	NO	NC	NC
528-529	NO	NC	NC
530-531	NO	NC	NC
532-533	NO	NC	NC
534-535	NO	NC	NC
536-537	NO	NC	NC
538-539	NO	NC	NC
540-541	NO	NC	NC
542-543	NO	NC	NC
544-545	NO	NC	NC
546-547	NO	NC	NC
548-549	NO	NC	NC
550-551	NO	NC	NC
552-553	NO	NC	NC
554-555	NO	NC	NC
556-557	NO	NC	NC
558-559	NO	NC	NC
560-561	NO	NC	NC
562-563	NO	NC	NC
564-565	NO	NC	NC
566-567	NO	NC	NC
568-569	NO	NC	NC
570-571	NO	NC	NC
572-573	NO	NC	NC
574-575	NO	NC	NC
576-577	NO	NC	NC
578-579	NO	NC	NC
580-581	NO	NC	NC
582-583	NO	NC	NC
584-585	NO	NC	NC
586-587	NO	NC	NC
588-589	NO	NC	NC
590-591	NO	NC	NC
592-593	NO	NC	NC
594-595	NO	NC	NC
596-597	NO	NC	NC
598-599	NO	NC	NC
600-601	NO	NC	NC
602-603	NO	NC	NC
604-605	NO	NC	NC
606-607	NO	NC	NC
608-609	NO	NC	NC
610-611	NO	NC	NC
612-613	NO	NC	NC
614-615	NO	NC	NC
616-617	NO	NC	NC
618-619	NO	NC	NC
620-621	NO	NC	NC
622-623	NO	NC	NC
624-625	NO	NC	NC
626-627	NO	NC	NC
628-629	NO	NC	NC
630-631	NO	NC	NC
632-633	NO	NC	NC
634-635	NO	NC	NC
636-637	NO	NC	NC
638-639	NO	NC	NC
640-641	NO	NC	NC
642-643	NO	NC	NC
644-645	NO	NC	NC
646-647	NO	NC	NC
648-649	NO	NC	NC
650-651	NO	NC	NC
652-653	NO	NC	NC
654-655	NO	NC	NC
656-657	NO	NC	NC
658-659	NO	NC	NC
660-661	NO	NC	NC
662-663	NO	NC	NC
664-665	NO	NC	NC
666-667	NO	NC	NC
668-669	NO	NC	NC
670-671	NO	NC	NC
672-673	NO	NC	NC
674-675	NO	NC	NC
676-677	NO	NC	NC
678-679	NO	NC	NC
680-681	NO	NC	NC
682-683	NO	NC	NC
684-685	NO	NC	NC
686-687	NO	NC	NC
688-689	NO	NC	NC
690-691	NO	NC	NC
692-693	NO	NC	NC
694-695	NO	NC	NC
696-697	NO	NC	NC
698-699	NO	NC	NC
700-701	NO	NC	NC
702-703	NO	NC	NC
704-705	NO	NC	NC
706-707	NO	NC	NC
708-709	NO	NC	NC
710-711	NO	NC	NC
712-713	NO	NC	NC







[illegible]

H	317801	SVW	SVW	08/16/25
	66E ECH			
7	276589	TR	BK	05/03/19
	66E ECH			
F	278211	TR	BK	10/19/18
	66E ECH			
E	265530	AE	BK	02/13/17
	66E ECH			
D	249818	AE	BK	7/20/14
	66E ECH			
C	247770	SDH	SDH	4/14/14
	66E ECH			
B	246325	AE	BK	01/16/14
	66E ECH			
A	242580	SDH	SDH	5/30/13
	66E ECH			
-	242295	SDH	SDH	5/6/13
	1049UE			

[illegible]