

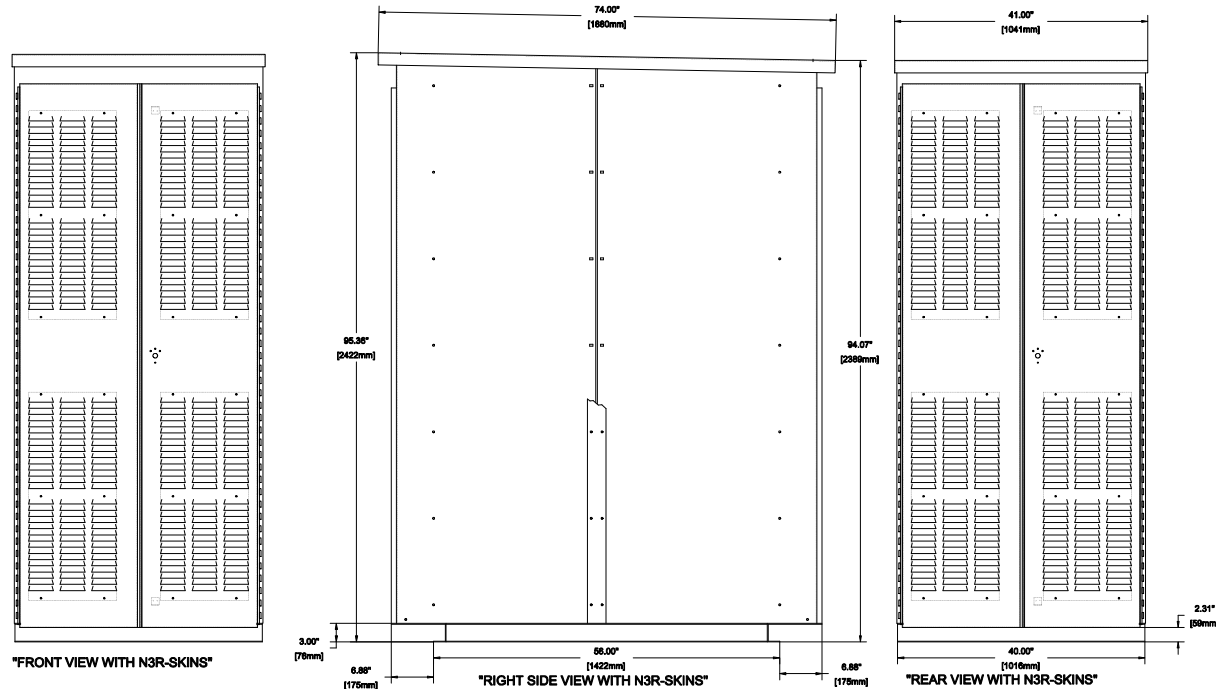
## ATS Submittal

### Transfer Switch Details

#2	ATS	AMPS: 3000	QTY: 2
Product	: Series 300	Catalog Number	: G03ATSB33000NGXM
Service Voltage / Hz	: 480V/60Hz	Optional Accessories	: 11BE,44G
Bypass Isolation	: Not Applicable	Product Description	: 300 Series, Automatic Open Transition Transfer Switch
No. of Switched Poles: 4	: 4	Neutral Configuration	: Switched [B]
Withstand Rating:	: See WCR Table Below	No. of Cables & Lug Size	: 12, 3/0 to 600 MCM
Frame = G, Switch Rating = 3000, Series = 300			
Enclosure	: 3R(M)-UL Type 3R secure double door enclosure (See Disclaimer 3)	Service	: Three Phase, 4-wire
Extended Warranty	: Not Included	Markings	:

#	ACCESSORY DESCRIPTIONS	
	Accessory Code	Description
1	11BE	Adds the following features to the Group G controller: (1) Serial RS-485 Modbus Communications (2) Multi-Schedule Engine Exerciser (3) a 300 Entry Event Log and (4) a common alarm output function. When applied on 3-phase systems it also enables: (1) 3-Phase Emergency Source VLL sensing (2) Phase Rotation Monitoring (3) Emergency Source VLL Unbalance Monitoring.
2	44G	Strip heater w/ thermostat, wired to load terminals: 208-600 volts

# OUTLINE FOR 300 SERIES 2600-3000 AMPERE "G" FRAME (3ATS,3NTS,3NDTS,3ADTS) REAR CONNECTED TRANSFER SWITCHES TYPE 3R SECURE ENCLOSURE



## GENERAL NOTES

- TYPE 3R RAINPROOF ENCLOSURE. FREE STANDING. FLOOR MOUNTED. CODE GAUGE FORMED FRAME CONSTRUCTION.
- NEG STANDARD GAUGE PAN TYPE DOOR WITH LOCKABLE HANDLE.
- FINISH: ANSI #1 GRAY, POLYESTER POWDER STANDARD. OTHER ANSI COLORS AVAILABLE CONSULT FACTORY. UL RECOGNIZED.
- RECOMMENDED CLEARANCES:  
FRONT: 36.00" (914mm)  
REAR: 30.00" (762mm)
- A 20% RATED GROUND BUS IS PROVIDED AT THE REAR OF THE ENCLOSURE.
- UNIT IS DESIGNED FOR BOTTOM CABLE ENTRY ONLY. THE STANDARD SWITCH CONFIGURATION IS FOR TOP LUGS EMERGENCY CENTER LUGS LOAD AND BOTTOM LUGS NORMAL. (REFER TO THE WIRING DIAGRAM FURNISHED WITH EACH TRANSFER SWITCH TO DETERMINE TERMINATION POSITIONS).
- NEUTRAL CONFIGURATIONS:  
AN OPTIONAL FULL RATED NEUTRAL CONFIGURATION FOR EACH SOURCE AND THE LOAD MAY BE PROVIDED. WHEN EQUIPPED IT IS IN ONE OF THE FOLLOWING FORMATS AS SPECIFIED BY THE CATALOG NUMBER NO.  
NEUTRAL TYPE:  
(A) SOLID (COPPER BUS) NEUTRAL.  
(B) SWITCHED NEUTRAL POLE.
- CENTER OF GRAVITY.
- NO KNOCKOUTS ARE PROVIDED.
- EXTERIOR VENTS ARE SUPPLIED WITH POLYESTER DUST FILTERS.

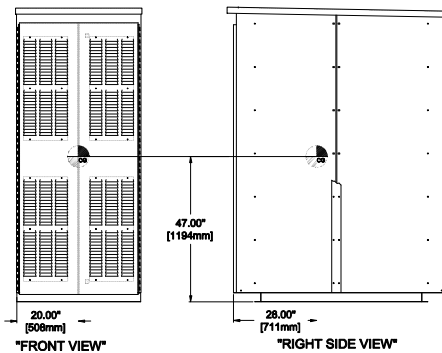
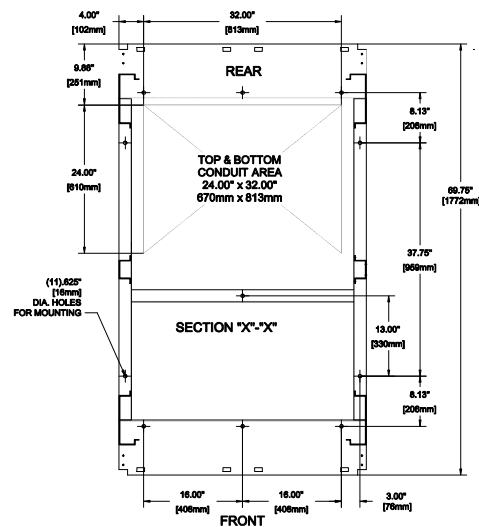
## CABLING NOTES

- ALL SIZES SUPPLIED STANDARD WITH MECHANICAL (SCREW TYPE) LUGS. (SEE AMP SIZE BELOW)  
A. LUG MATERIAL: ALUMINUM ALLOY 6061-T6 WITH ELECTRO TIN PLATED FINISH.  
B. SCREW MATERIAL: ALUMINUM ALLOY 6062-T6 WITH ELECTRO TIN PLATED FINISH.  
C. UL LISTED, CSA CERTIFIED.  
D. LUG SCREW TIGHTENING TORQUE PER UL 486B: 375 IN-LBS.  
E. SUITABLE WIRE BENDING SPACE IS PROVIDED. (SEE AMP SIZE BELOW)
- GROUND LUGS ARE PROVIDED STANDARD AS FOLLOWS. (SEE AMP SIZE BELOW).
- CUSTOMER TERMINAL BLOCKS:  
FOR ALL 300 SERIES UNITS THE TB WILL BE MOUNTED ON THE UPPER RIGHT INSIDE OF ENCLOSURE FOR 3ADTS AND 3NTS. FOR ALL OTHER UNITS TB WILL BE MOUNTED ON THE TRANSFER SWITCH FRAME AS INDICATED.

## NOTES 2600-3000 AMPS

- SUPPLIED WITH STANDARD MECHANICAL (SCREW TYPE) LUGS ON THE NORMAL, EMERGENCY & LOAD BUS STABS. TWO (2) LUG PER PHASE AND NEUTRAL EACH SUITABLE FOR CONNECTION OF TWELVE (12) 1/0 - 750MCM CU/AL CABLE (SEE NOTE 12" BELOW).  
A. SUITABLE WIRE BENDING SPACE IS PROVIDED FOR UP TO TWELVE (12) 750MCM CABLES PER TERMINAL PER NEC.
- GROUND LUGS ARE PROVIDED STANDARD AS FOLLOWS;  
(36) 1/0 - 750MCM CU/AL CABLE

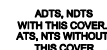
AMP SIZE	POLES	WEIGHTS LB (KG)
2600 TO 3000	2	2000 (908)
	B2	2150 (976)
	C2	2150 (976)
	3	2150 (976)
	B3	2230 (1012)
	C3	2230 (1012)



E	30000	LY	9/15/04
D	26000	NB	TR 01/08/02
C	276415	BK	BK 10/27/01
B	284623	WK	BK 04/28/04
A	248003	AE	BK 05/11/04
	348510	AE	BK 10/10/03
	REUSED		
REV. TO	DATE	BY	APP.

PROJECT NAME:				DATE:			
OUTLINE				DATE:			
300 SERIES TS "G"				DATE:			
2600-3000 AMPS, "G" FRAME TYPE 3R SECURE				DATE:			
BY	DATE	REVISIONS TO BE MADE TO BE ACCORDANCE WITH ASSESSMENT OF RISK FOR PLASTIC PARTS SEE 8P-438	APPROVAL	DATE	DATE	DATE	DATE
DESIGNED BY	AE	10/10/03	APPROVED BY	AE	10/10/03	DATE	10/10/03
CHECKED BY	BK	10/10/03	APPROVED BY	BK	10/10/03	DATE	10/10/03
DESIGNED BY	WK	10/10/03	APPROVED BY	WK	10/10/03	DATE	10/10/03
CHECKED BY	AE	10/10/03	APPROVED BY	AE	10/10/03	DATE	10/10/03
ASCO P 3000 SERIES TECHNOLOGIES, L.P. PLANTATION PARK, NEW JERSEY 07068 U.S.A.				SCALE: 1" = 1'-0" DATE: 10/10/03 DRAWING NO.: 1001395-003 SHEET: 1 OF 2			

**ASCO®**

3  
[78]

**-LOAD**

— NORMAL

— NORMAL

8.00"  
[4mm]

GROUND LUG  
SEE CABLING  
NOTE 2

**A**

**ASCO®**

THREE PHASE WIRING FOR ASCO 300 SERIES TRANSFER SWITCHES (G3ATS/G3NTS) 1000-3200 AMPERES WITH GROUP G CONTROLS

GENERAL INFORMATION

COMMON ALARM & NOT IN AUTO SIGNALING FEATURES

A SET OF FORM C CONTACTS IS PROVIDED ON THE GROUP G CONTROLLER AS "OP1". THE FEATURE SETTING OF "OP1" CAN BE SET TO OPERATE THE CONTACTS AS A "NOT IN AUTO" SIGNAL.

WHEN "OP1" IS SET FOR "NOT IN AUTO", THE OUTPUT CONTACTS CHANGE POSITION WHEN THE TRANSFER IS BEING INHIBITED FROM TRANSFERRING TO THE EMERGENCY SOURCE (FEATURE 34B) OR THE TRANSFER SWITCH HAS BEEN SET FOR NON-AUTOMATIC (MANUAL) OPERATION.

WHEN OPTIONAL ACCESSORY 118E "SOFTWARE BUNDLE" IS PART OF THE TRANSFER SWITCH ASSEMBLY, "OP1" MAY ALTERNATIVELY SET FOR A "COMMON ALARM" SIGNAL. THE OUTPUT CONTACTS CHANGE POSITION WHEN A "COMMON ALARM" IS NOT PRESENT AND RESET WHEN A "COMMON ALARM" CONDITION IS PRESENT. THE "COMMON ALARM" SIGNAL CONDITIONS ARE SELECTABLE.

ADDITIONAL "COMMON ALARM" AND "NOT IN AUTO" CONTACTS ARE AVAILABLE WHEN OPTIONAL ACCESSORY 18RX (RELAY EXPANSION MODULE) IS INCLUDED IN THE TRANSFER SWITCH ASSEMBLY. OUTPUT CONTACTS "OP2" AND/OR "OP3" WILL PROVIDE SIGNAL FUNCTIONS WHEN THE FEATURE SETTING OF EACH IS SET TO OPERATE AS "COMMON ALARM" OR "NOT IN AUTO".

CONTACTS ARE RATED 5 AMPS RESISTIVE AT 30 VDC MAXIMUM, 100 mA AT 5 VDC MINIMUM.

REFER TO USER'S GUIDE, ASCO GROUP G CONTROLLER FOR AUTOMATIC & NON-AUTOMATIC TRANSFER SWITCHES, PART NUMBER 381333-400 FOR SETTING INFORMATION.

EXTERNAL POWER SUPPLY COMPATIBILITY

USE OF AN EXTERNAL POWER SUPPLY IS USEFUL WHEN REQUIRED TO EXTEND THE FOLLOWING CONTROLLER TIME DELAYS BEYOND 6 SECONDS;

FEATURE 1C - OVERRIDE MOMENTARY NORMAL SOURCE OUTAGES  
FEATURE 1F - OVERRIDE MOMENTARY EMERGENCY SOURCE OUTAGES

AN EXTERNAL POWER SUPPLY IS ALSO USEFUL WHEN THE TRANSFER SWITCH IS USED WITH COMMUNICATIONS FEATURES BY ENABLING THE CONTROLLER TO CONTINUE COMMUNICATING.

AN EXTERNAL POWER SOURCE MAY BE PROVIDED TO THE CONTROLLER, UNTIL THE NORMAL SOURCE OR EMERGENCY SOURCE IS AVAILABLE, BY USE OF;

- AN EXTERNAL 24 VDC POWER SUPPLY WITH ACCESSORY 18RX (RELAY EXPANSION MODULE) OR
- OPTIONAL ACCESSORY 1UP (UNINTERRUPTIBLE POWER SUPPLY MODULE)

EXTERNAL 24 VDC POWER SUPPLY "1UP"

AN EXTERNAL 24 VDC POWER SUPPLY MAY BE USED TO POWER THE CONTROLLER WHEN ACCESSORY 18RX (RELAY EXPANSION MODULE) IS INCLUDED IN THE TRANSFER SWITCH ASSEMBLY. OUTPUT CONTACTS "OP2" WILL PROVIDE AN EXTERNAL 24 VDC POWER SUPPLY FUNCTIONALITY WHEN ITS FEATURE SETTING IS SET TO OPERATE AS "1UP". ADDITIONALLY, JUMPERS MUST BE RECONFIGURED ON ACCESSORY 18RX (RELAY EXPANSION MODULE) TO ENABLE THIS FUNCTION AS FOLLOWS;

REMOVE JUMPERS "J1" 1-2 & "J1" 3-4  
CONNECT JUMPERS "J1" 5-7 & "J1" 6-8

THE OUTPUT CONTACTS CHANGE POSITION WHEN EITHER THE NORMAL SOURCE OR EMERGENCY SOURCE IS AVAILABLE AND RESET WHEN NEITHER SOURCE IS AVAILABLE. THE "OP2" N/C CONTACT SWITCHES CUSTOMER PROVIDED 24 VDC FROM THE EXTERNAL POWER SUPPLY TO THE CONTROLLER.

REFER TO USER'S GUIDE, ASCO GROUP G CONTROLLER FOR AUTOMATIC & NON-AUTOMATIC TRANSFER SWITCHES, PART NUMBER 381333-400 FOR SETTING INFORMATION.

ACCESSORY 1UP (UNINTERRUPTIBLE POWER SUPPLY):  
WHEN OPTIONAL ACCESSORY 1UP IS INCLUDED IN THE TRANSFER SWITCH ASSEMBLY, THE CONTROLLER IS PROVIDED WITH LIMITED RESERVE POWER (APPROXIMATELY 3 MINUTES).

LOAD CURRENT METERING

WHEN OPTIONAL ACCESSORY 23GB IS PART OF THE TRANSFER SWITCH ASSEMBLY, THREE PHASE CURRENT MEASUREMENTS ARE AVAILABLE FOR DISPLAY ON THE GROUP G CONTROLLER.

REFER TO USER'S GUIDE, ASCO GROUP G CONTROLLER FOR AUTOMATIC & NON-AUTOMATIC TRANSFER SWITCHES, PART NUMBER 381333-400 FOR INFORMATION ON USE.

ADVANCED-FUNCTION SOFTWARE BUNDLE

WHEN OPTIONAL ACCESSORY 118E IS PART OF THE TRANSFER SWITCH ASSEMBLY, AN ADVANCED-FUNCTION SOFTWARE BUNDLE IS AVAILABLE TO PERFORM THE FOLLOWING FUNCTIONS;

- SERIAL COMMUNICATIONS (RS-485)
- PROGRAMMABLE ENGINE EXERCISER
- EVENT LOG
- COMMON ALARM SIGNAL CAPABILITY ON GROUP G CONTROLLER "OP1" OUTPUT.

- (3 PHASE SENSING ONLY)
- 3 PHASE EMERGENCY SOURCE SENSING.
- PHASE ROTATION SENSING.
- EMERGENCY VOLTAGE UNBALANCE SENSING.

REFER TO USER'S GUIDE, ASCO GROUP G CONTROLLER FOR AUTOMATIC & NON-AUTOMATIC TRANSFER SWITCHES, PART NUMBER 381333-400 FOR INFORMATION ON THESE FUNCTIONS.

NON-AUTOMATIC (MANUAL) OPERATION

TRANSFER SWITCH ASSEMBLY FACTORY SET FOR NON-AUTOMATIC OPERATION PROVIDE USER INITIATED, ELECTRICAL OPERATION OF THE TRANSFER SWITCH TO EITHER AVAILABLE SOURCE. THE TRANSFER SWITCH ASSEMBLY IS PHYSICALLY IDENTICAL TO THAT OF THE AUTOMATIC TYPE.

WHEN THE TRANSFER SWITCH IS SET FOR NON-AUTOMATIC OPERATION, A CUSTOMER PROVIDED SELECTOR SWITCH MAY BE USED TO OPERATE IT FROM A REMOTE LOCATION.

REMOTE CONTROL FEATURES

THE FOLLOWING CONTROL PANEL INPUTS PROVIDE REMOTE CONTROL FUNCTIONS FOR THE TRANSFER SWITCH. EACH FUNCTION CAN BE IMPLEMENTED BY THE CUSTOMER PROVIDING THE FORM OF CONTROL DESCRIBED. EACH CONTROL CONTACT MUST BE SUITABLE FOR A 5 VDC LOW ENERGY CIRCUIT.

EXTERNAL FEATURE 17: REMOTE TRANSFER TO EMERGENCY FEATURE (FOR AUTOMATIC TRANSFER TYPE ONLY) - REQUIRES A CUSTOMER SUPPLIED, NORMALLY CLOSED CONTACT. OPENING OF THE CONTACT CAUSES ENGINE START AND TRANSFER TO THE EMERGENCY SOURCE. RE-CLOSURE OF THE CONTACT ACTIVATES THE FEATURE 3A "RETRANSFER TO NORMAL (IF JUST TEST)" TIME DELAY PRIOR TO RETRANSFER. IN THE EVENT THAT THE EMERGENCY SOURCE FAILS WHILE THE TRANSFER SWITCH IS CONNECTED TO EMERGENCY AND THE CUSTOMER SUPPLIED CONTACT IS OPEN, THE TRANSFER SWITCH WILL AUTOMATICALLY RETRANSFER TO THE NORMAL SOURCE.

EXTERNAL FEATURE 6R: REMOTE BYPASS OF RETRANSFER TO NORMAL TIME DELAY - REQUIRES A CUSTOMER SUPPLIED, NORMALLY CLOSED CONTACT. OPENING OF THE CONTACT BYPASSES FEATURE 3A "RETRANSFER TO NORMAL (IF JUST TEST)" TIME DELAY.

REFER TO USER'S GUIDE, ASCO GROUP G CONTROLLER FOR AUTOMATIC & NON-AUTOMATIC TRANSFER SWITCHES, PART NUMBER 381333-400 FOR SETTING INFORMATION.

ACCESSORIES

NOTES

1. SWITCH SHOWN DE-ENERGIZED CONNECTED TO NORMAL SOURCE.
2. DEVICE SYMBOLS AND DESIGNATIONS ARE IN ACCORDANCE WITH NEMA PUB. ICS 1, PART 1-101A.
3. ALL WIRING IS #16 AWG, TINNED, STRANDED COPPER UNLESS OTHERWISE INDICATED.
4. INDICATES CUSTOMER CONNECTION POINTS.
5. INDICATES FACTORY CONNECTION POINTS.
6. CONNECTION POINTS THAT HAVE BOTH CUSTOMER CONNECTIONS AND FACTORY CONNECTIONS ARE SHOWN WITH BOTH CUSTOMER CONNECTION POINTS.
7. AN OPERATORS MANUAL IS FURNISHED WITH EACH AUTOMATIC TRANSFER SWITCH. REFER TO THIS PUBLICATION PRIOR TO INSTALLATION AND OPERATION OF THE SWITCH.
8. GROUND STRAP ON CONTROL PANEL IS AFFIXED TO CHASSIS (ENCLOSURE) AT LOWER LEFT CONTROL PANEL MOUNTING STUD.

CATALOG NUMBER SUFFIXES									EXPLANATION OF CATALOG NUMBER CODES									
TS FRAME	CATALOG TYPE	NEUTRAL TYPE	PHASE POLES	AMP. CODE	VOLT CODE	CONTROLLER	OPTIONAL ACCESSORY	ENCLOSURE CODE	NEUTRAL TYPE		VOLTAGE CODES 3 PHASE (3 OR 4 WIRE) OR 2 WIRE		ENCLOSURE CODES					
									CODE	DESCRIPTION	CODE	NOMINAL VOLTAGE	CODE	TYPE	DESCRIPTION			
G	SATS INTS	A B	3	C D E F G H J K L M N P Q R	1000 1200 1600 2000 2400 3000 3200	G	X	C F G H J L M N P Q	A	SOLID SWITCHING	C	208	BLANK	C	1	OPEN TYPE (NO ENCLOSURE) GENERAL PURPOSE, INDOOR		
									B		D	220	F	3R	OUTDOOR, RAINPROOF, SLEET & ICE RESISTANT			
											E	230	G	4R	INDOOR/OUTDOOR, WATERTIGHT & DUSTTIGHT			
											F	240	H	4X	TYPE 4 PLUS CORROSION RESISTANCE (STAINLESS STEEL)			
											G	277	L	12	INDOOR, INDUSTRIAL ENVIRONMENTS, OILTIGHT & DUSTTIGHT			
											H	300			(SECURE ENCLOSURES)			
											J	400	M	3R	OUTDOOR, RAINPROOF, SLEET & ICE RESISTANT			
											K	415	N	4	INDOOR/OUTDOOR, WATERTIGHT & DUSTTIGHT			
											L	440	P	4X	TYPE 4 PLUS CORROSION RESISTANCE (STAINLESS STEEL)			
											M	460	Q	12	INDOOR, INDUSTRIAL ENVIRONMENTS, OILTIGHT & DUSTTIGHT			
											N	480						
											P	500						
											Q	575						
											R	600						
															BLANK FOR NONE	BLANK FOR OPEN TYPE		

CATALOG NUMBER  
300 SERIES TRANSFER SWITCHES (G3ATS/G3NTS) 3PH 1000-3200 AMP  
CERTIFIED TO  
BY  
DATE

FORM REV. K  
PROJECT NAME  
WIRING DIAGRAM  
300 SERIES (G3ATS/G3NTS) 3PH 1000-3200 AMP  
"G" FRAME, GROUP G CONTROLS  
THIRD ANGLE PROJECTION

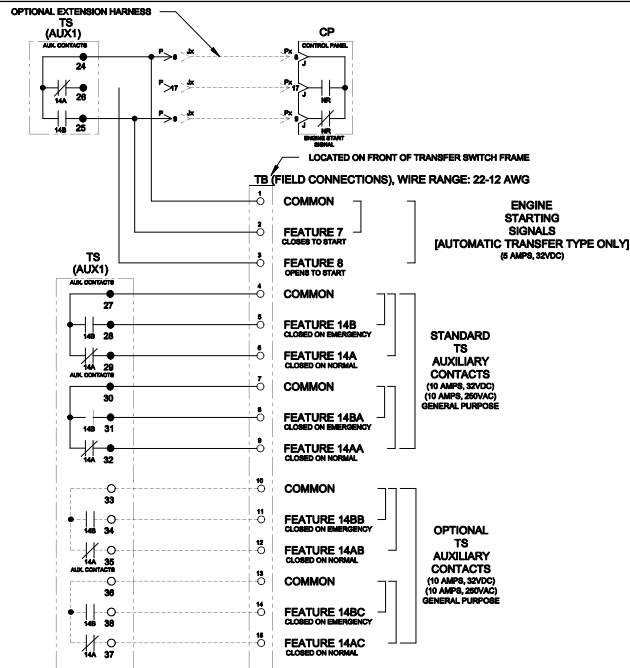
DRIVEN BY: DJS  
CHECKED BY: BK  
DATE: 10/18/18  
REVISION: 1

MANUFACTURING TOLERANCES TO BE AS SHOWN UNLESS OTHERWISE SPECIFIED.  
FOR ALL PARTS SEE DRAWING.  
PROPERTY OF ASCO POWER TECHNOLOGIES, LLC. ALL RIGHTS RESERVED.  
NO REUSE OR REPRODUCTION OF THIS DOCUMENT IS PERMITTED WITHOUT THE WRITTEN PERMISSION OF ASCO POWER TECHNOLOGIES, LLC.

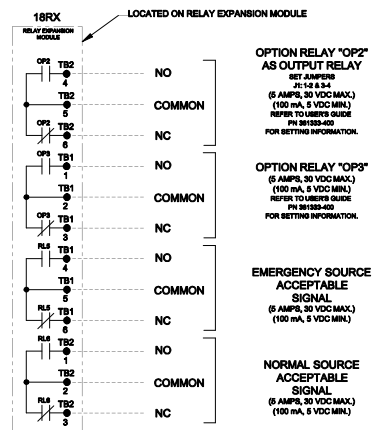
COMPUTER GENERATED DRAWING  
SCALE: 1"=1'-0"  
DWG. NO.: 1001682  
REV. K  
DATE: 10/18/18  
BY: DJS  
T OF 7



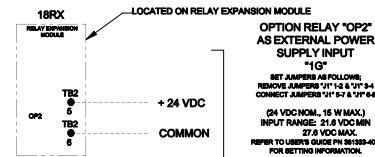
# FIELD CONNECTIONS



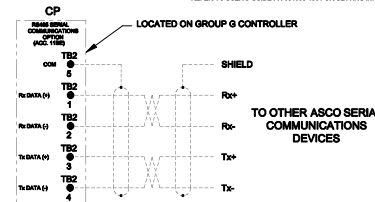
## OPTIONAL ACCESSORY 18RX (RELAY EXPANSION MODULE)



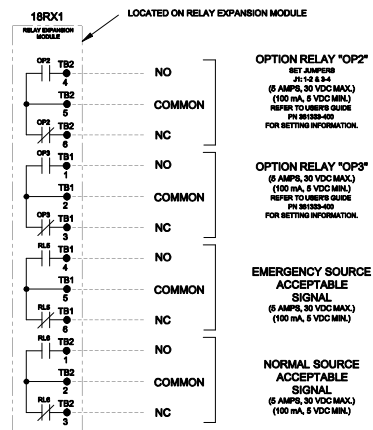
"OP2" OPTIONAL USES



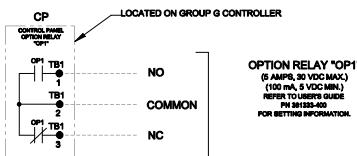
## RS485 SERIAL COMMUNICATIONS OPTION



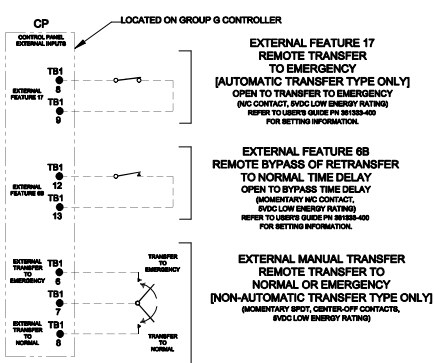
## OPTIONAL ACCESSORY 18RX1 (SECOND RELAY EXPANSION MODULE)



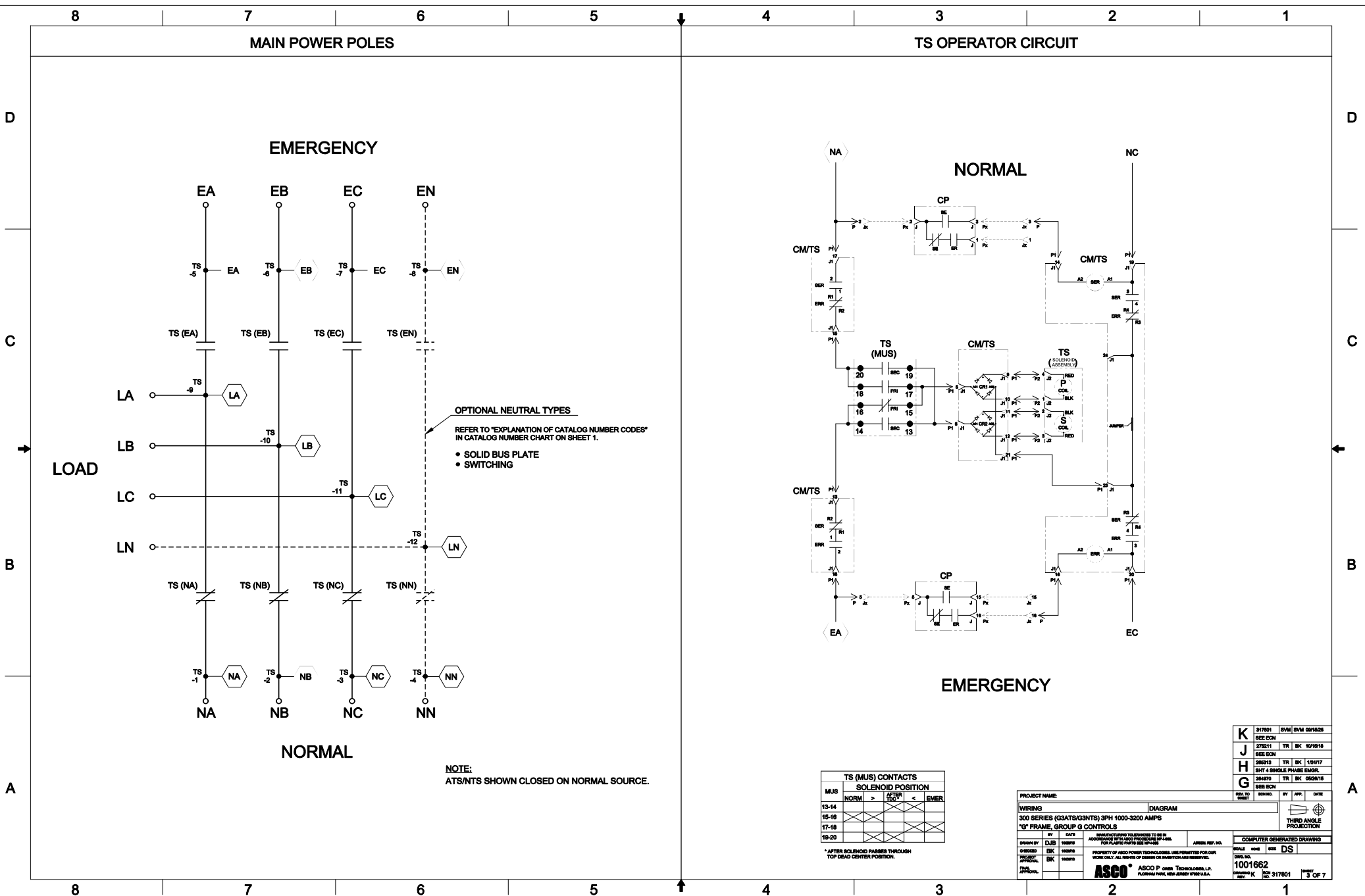
## CONTROLLER OPTION RELAY "OP1" (STANDARD)



## CONTROLLER REMOTE CONTROL FEATURES



PROJECT NAME:		DIAGRAM	
WIRING		300 SERIES (3GATS/3GINTS) 3PH 1000-3200 AMPS	
"G" FRAME, GROUP G CONTROLS			
BY	DATE	REVISIONS TO BE MADE BY	DATE
CHK	DATE	APPROVAL	DATE
APPROVAL	DATE	APPROVAL	DATE
DATE	DATE	DATE	DATE
ASCO P. OVER TECHNOLOGIES, L.P.		1001682	
FLORHAM PARK, NEW JERSEY 07938 U.S.A.		REV. 2 OF 7	



D

C

B

A

D

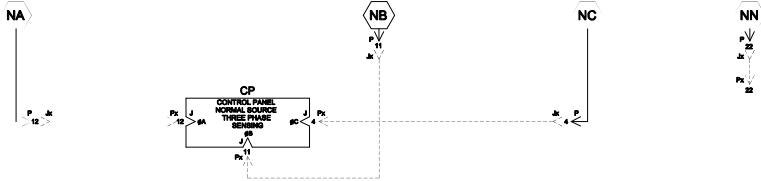
C

B

A

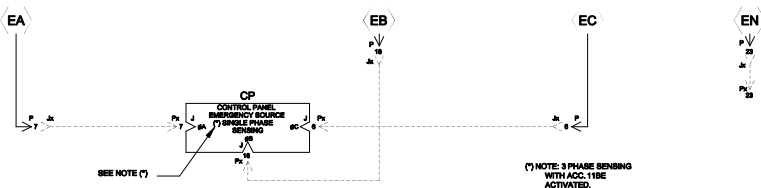
NORMAL SOURCE CIRCUITS

NORMAL



EMERGENCY SOURCE CIRCUITS

EMERGENCY

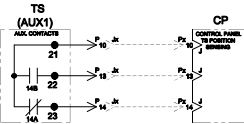


LOAD TERMINAL CIRCUITS

LOAD



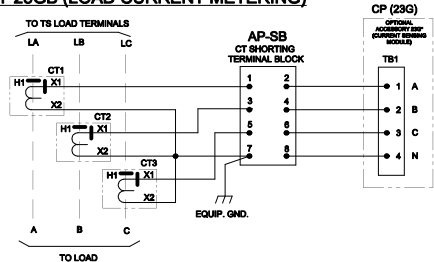
CONTROL SIGNALS & INDICATION



ADDITIONAL CIRCUITS

OPTIONAL ACCESSORY 23GB (LOAD CURRENT METERING)

SWITCH RATING	CT RATIO
1200A	1200:5A
1600A	1600:5A
2000A	2000:5A
2500A	2500:5A
3000A	3000:5A
3200A	4000:5A



PROJECT NAME:  
WIRING  
300 SERIES (3GATS/3GNTS) 3PH 1000-3200 AMP  
"G" FRAME, GROUP G CONTROLS

BY: DJG  
CHECKED: BK  
DESIGNED: BK  
DATE: 10/18/14

REVISIONS:  
1. 10/18/14  
2. 10/18/14  
3. 10/18/14  
4. 10/18/14  
5. 10/18/14  
6. 10/18/14  
7. 10/18/14  
8. 10/18/14  
9. 10/18/14  
10. 10/18/14  
11. 10/18/14  
12. 10/18/14  
13. 10/18/14  
14. 10/18/14  
15. 10/18/14  
16. 10/18/14  
17. 10/18/14  
18. 10/18/14  
19. 10/18/14  
20. 10/18/14  
21. 10/18/14  
22. 10/18/14  
23. 10/18/14  
24. 10/18/14  
25. 10/18/14  
26. 10/18/14  
27. 10/18/14  
28. 10/18/14  
29. 10/18/14  
30. 10/18/14  
31. 10/18/14  
32. 10/18/14  
33. 10/18/14  
34. 10/18/14  
35. 10/18/14  
36. 10/18/14  
37. 10/18/14  
38. 10/18/14  
39. 10/18/14  
40. 10/18/14  
41. 10/18/14  
42. 10/18/14  
43. 10/18/14  
44. 10/18/14  
45. 10/18/14  
46. 10/18/14  
47. 10/18/14  
48. 10/18/14  
49. 10/18/14  
50. 10/18/14  
51. 10/18/14  
52. 10/18/14  
53. 10/18/14  
54. 10/18/14  
55. 10/18/14  
56. 10/18/14  
57. 10/18/14  
58. 10/18/14  
59. 10/18/14  
60. 10/18/14  
61. 10/18/14  
62. 10/18/14  
63. 10/18/14  
64. 10/18/14  
65. 10/18/14  
66. 10/18/14  
67. 10/18/14  
68. 10/18/14  
69. 10/18/14  
70. 10/18/14  
71. 10/18/14  
72. 10/18/14  
73. 10/18/14  
74. 10/18/14  
75. 10/18/14  
76. 10/18/14  
77. 10/18/14  
78. 10/18/14  
79. 10/18/14  
80. 10/18/14  
81. 10/18/14  
82. 10/18/14  
83. 10/18/14  
84. 10/18/14  
85. 10/18/14  
86. 10/18/14  
87. 10/18/14  
88. 10/18/14  
89. 10/18/14  
90. 10/18/14  
91. 10/18/14  
92. 10/18/14  
93. 10/18/14  
94. 10/18/14  
95. 10/18/14  
96. 10/18/14  
97. 10/18/14  
98. 10/18/14  
99. 10/18/14  
100. 10/18/14

APPROVAL:  
BY: BK  
DATE: 10/18/14  
SIGNATURE: [Signature]  
TITLE: [Title]

PROPERTY OF ASCO POWER TECHNOLOGIES, LLC. THIS DRAWING IS THE PROPERTY OF ASCO POWER TECHNOLOGIES, LLC. NO PARTS MAY BE REPRODUCED OR TRANSMITTED IN ANY FORM OR BY ANY MEANS, ELECTRONIC OR MECHANICAL, WITHOUT PERMISSION IN WRITING FROM ASCO POWER TECHNOLOGIES, LLC.

ASCO POWER TECHNOLOGIES, LLC  
1001662  
REV. 10/18/14  
4 OF 7

