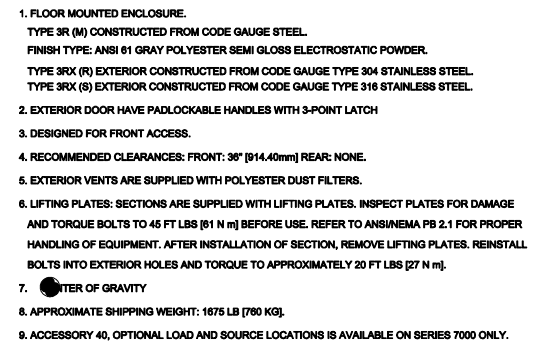


## ATS Submittal

### Transfer Switch Details

#3	ATS	AMPS: 2000	QTY: 2
Product	: Series 300	Catalog Number	: G03ATSB32000NGXM
Service Voltage / Hz	: 480V/60Hz	Optional Accessories	: 11BE,44G
Bypass Isolation	: Not Applicable	Product Description	: 300 Series, Automatic Open Transition Transfer Switch
No. of Switched Poles: 4	: 4	Neutral Configuration	: Switched [B]
Withstand Rating:	: See WCR Table Below	No. of Cables & Lug Size	: 6, 1/0 AWG to 600 MCM
Frame = G, Switch Rating = 2000, Series = 300			
Enclosure	: 3R(M)-UL Type 3R secure double door enclosure (See Disclaimer 3)	Service	: Three Phase, 4-wire
Extended Warranty	: Not Included	Markings	:

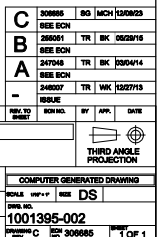
#	ACCESSORY DESCRIPTIONS	
	Accessory Code	Description
1	11BE	Adds the following features to the Group G controller: (1) Serial RS-485 Modbus Communications (2) Multi-Schedule Engine Exerciser (3) a 300 Entry Event Log and (4) a common alarm output function. When applied on 3-phase systems it also enables: (1) 3-Phase Emergency Source VLL sensing (2) Phase Rotation Monitoring (3) Emergency Source VLL Unbalance Monitoring.
2	44G	Strip heater w/ thermostat, wired to load terminals: 208-600 volts



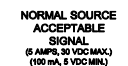
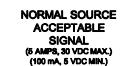
1. G FRAME AUTOMATIC TRANSFER SWITCH.
2. TRANSFER SWITCH RATING: 2000 AMPS  
WITHSTAND AND CLOSING RATING WHEN PROTECTED BY A CIRCUIT BREAKER WITHOUT  
AN ADJUSTABLE SHORT TIME RESPONSE,  
MAXIMUM 0.05 SECONDS: 85,000 RMS SYM @ 240V, 480V, 600V.  
WITHSTAND AND CLOSING RATING WHEN PROTECTED BY A CIRCUIT BREAKER WITH  
AN ADJUSTABLE SHORT TIME RESPONSE,  
MAXIMUM 0.30 SECONDS, 42,000 RMS SYM @ 240V, 480V.  
MAXIMUM 0.50 SECONDS, 35,000 RMS SYM @ 240V, 480V.
3. A FULL RATED NEUTRAL CONNECTION FOR EACH SOURCE AND THE LOAD IS OPTIONAL  
WHEN PROVIDED IT IS IN ONE OF THE FOLLOWING FORMATS.
  - A. SOLID NEUTRAL
  - B. SWITCHED NEUTRAL POLE
  - C. OVERLAPPING NEUTRAL POLE (NOT AVAILABLE ON ADTS & ACTS UNITS)
4. UL 1008 OR CSA C22.2 No. 178.1



1. MECHANICAL (SCREW TYPE) LUGS FOR CUAL CABLE.  
SOURCE 1 (NORMAL): (8) 100-600MCM [50-300mm] PER PHASE & NEUTRAL  
LOAD: (8) 100-600MCM [50-300mm] PER PHASE & NEUTRAL  
SOURCE 2 (EMERGENCY): (8) 100-600MCM [50-300mm] PER PHASE & NEUTRAL  
GROUND: (18) 100-600MCM [50-300mm]  
A. SUITABLE WIRE BENDING SPACE IS PROVIDED AS PER NEC.
2. SWITCH MAY BE SUPPLIED WITHOUT LUGS.
3. OPTIONAL LUGS MAY BE SUPPLIED (MAY AFFECT ENCLOSURE SIZE).

1. USE 90°C MINIMUM CU/AL WIRE FOR POWER CABLES.
2. WIRE SIZE TO BE BASED ON AMPACITY OF 75°C WIRE.
3. USE 60°C MINIMUM CU WIRE FOR CONTROLS.

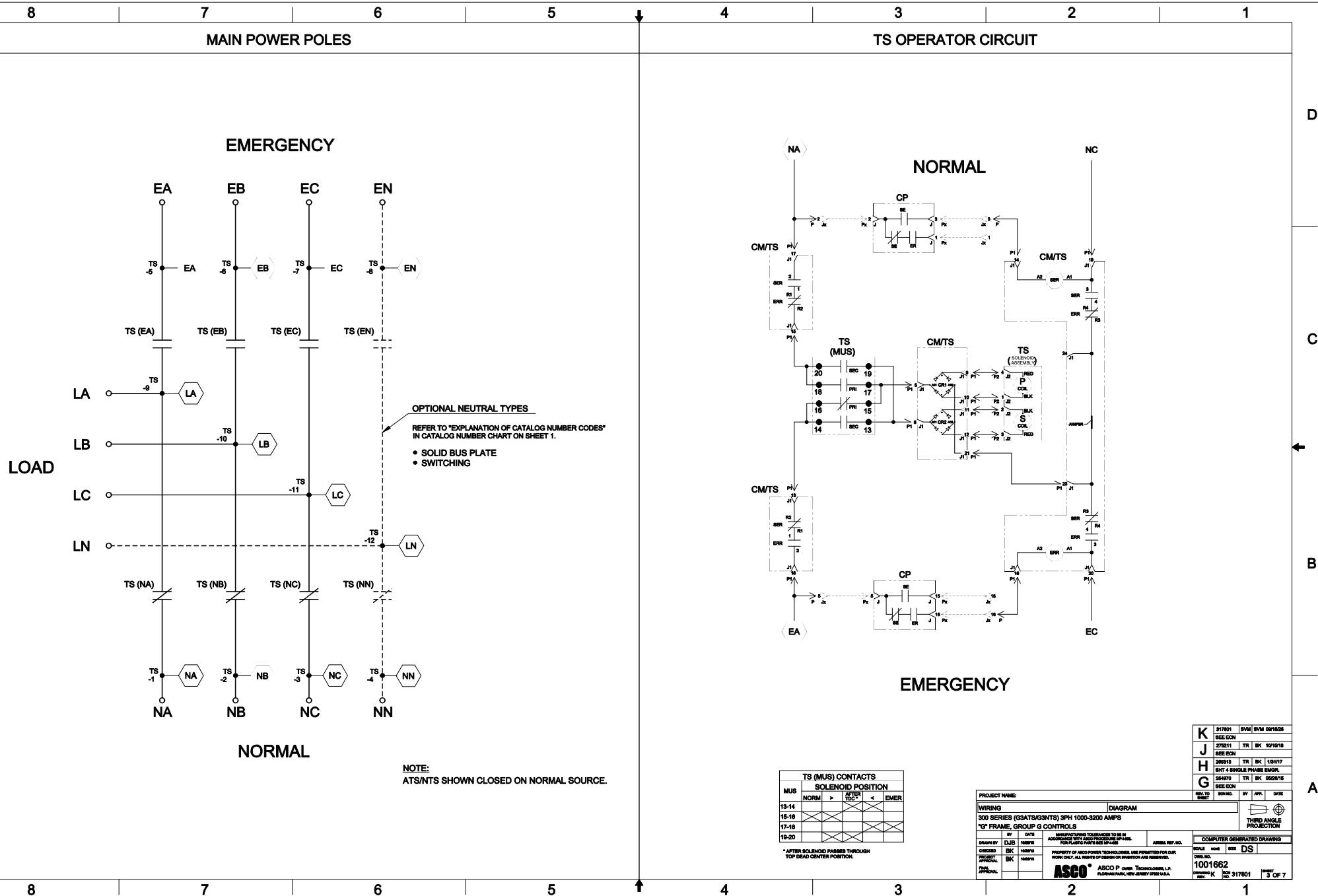






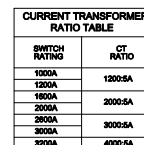
PROJECT NAME:				REV. TO	REV. NO.	BY	APP.	DATE
WIRING				DIAGRAM		 THIRD ANGLE PROJECTION		
300 SERIES (G3AT5/G3NT5) 3PH 1000-3200 AMPS								
"G" FRAME, GROUP G CONTROLS								
DRAWN BY	BY	DATE	MANUFACTURING TECHNOLOGIES TO BE APPROVED BY NEW JERSEY DEPT. OF PUBLIC PLANTS PER MS-1048			APPROVAL REF. NO.		
CHIEFED	DJB	10/29/79	PROPERTY OF ASCO POWER TECHNOLOGIES, INC. PERMITTED FOR OUR WORK ONLY. ALL RIGHTS OF DESIGN OR INVENTION ARE RESERVED.			COMPUTER GENERATED DRAWING		
DESIGN APPROVAL	BK	10/29/79				 ASCO PWR TECHNOLOGIES, INC. 1001662 DRAWING NO. 317201-1		



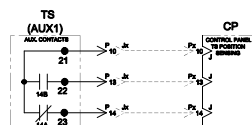




### OPTIONAL ACCESSORY 23GB (LOAD CURRENT METERING)



## LOAD



<b>K</b>	317801	SVM	SVM	08/15/17
	8EE ECN			
<b>J</b>	275211	TR	BK	10/15/17
	8EE ECN			
<b>H</b>	205313	TR	BK	1/3/17
	BHT 4 SINGLE PHASE EMGR.			
<b>G</b>	264970	TR	BK	05/26/17
	8EE ECN			

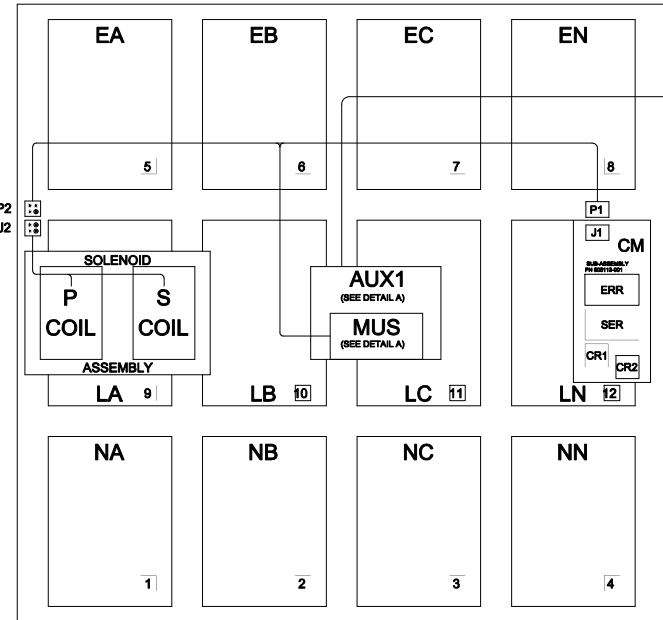
PROJECT NAME:		REV. 1		REV. BY	DATE
		REV. 2		REV. BY	DATE
WIRING		DIAGRAM			
300 SERIES (G3AT5/G3NT5) 3PH 1000-3200 AMPs					
"G" FRAME, GROUP C CONTROLS					
DRAWN BY	DATE	MANUFACTURING TOLERANCES TO BE AS ACCORDING TO THE ASME Y14.5-1994		GENERAL REF. NO.	
CHANGED BY	DATE	PROPERTY OF ASCO POWER TECHNOLOGIES, INC. PERMITTED FOR YOUR FIRM ONLY. ALL RIGHTS OF INVENTOR ARE RESERVED.		COMPUTER GENERATED DRAWING	
APPROVAL BY	DATE	ASCO P. OWN. TECHNOLOGIES, INC. 10001662		DATE	DS
APPROVAL BY	DATE	ASCO P. OWN. TECHNOLOGIES, INC. 10001662		DATE	DS
APPROVAL BY	DATE	ASCO P. OWN. TECHNOLOGIES, INC. 10001662		DATE	DS

# PHYSICAL DIAGRAM

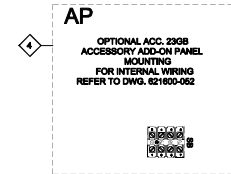
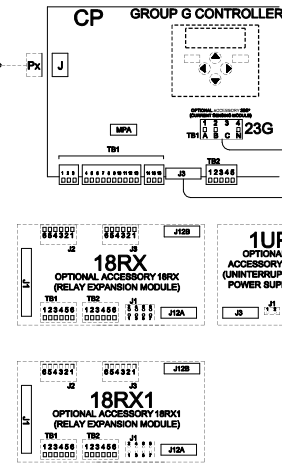
## ENCLOSURE

## DOOR, INSIDE

### TS (TRANSFER SWITCH)



TB 1 2 15  
FIELD INTERFACE TERMINAL BLOCK  
FOR ACCESSORIES 7, 8, 14A & 14B  
(MOUNTED ON FRONT TRANSFER SWITCH FRAME)

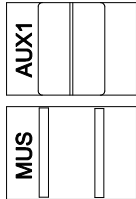


AP1  
OPTIONAL  
ACCESSORY ADD-ON PANEL  
MOUNTING

AP2  
OPTIONAL  
ACCESSORY ADD-ON PANEL  
MOUNTING

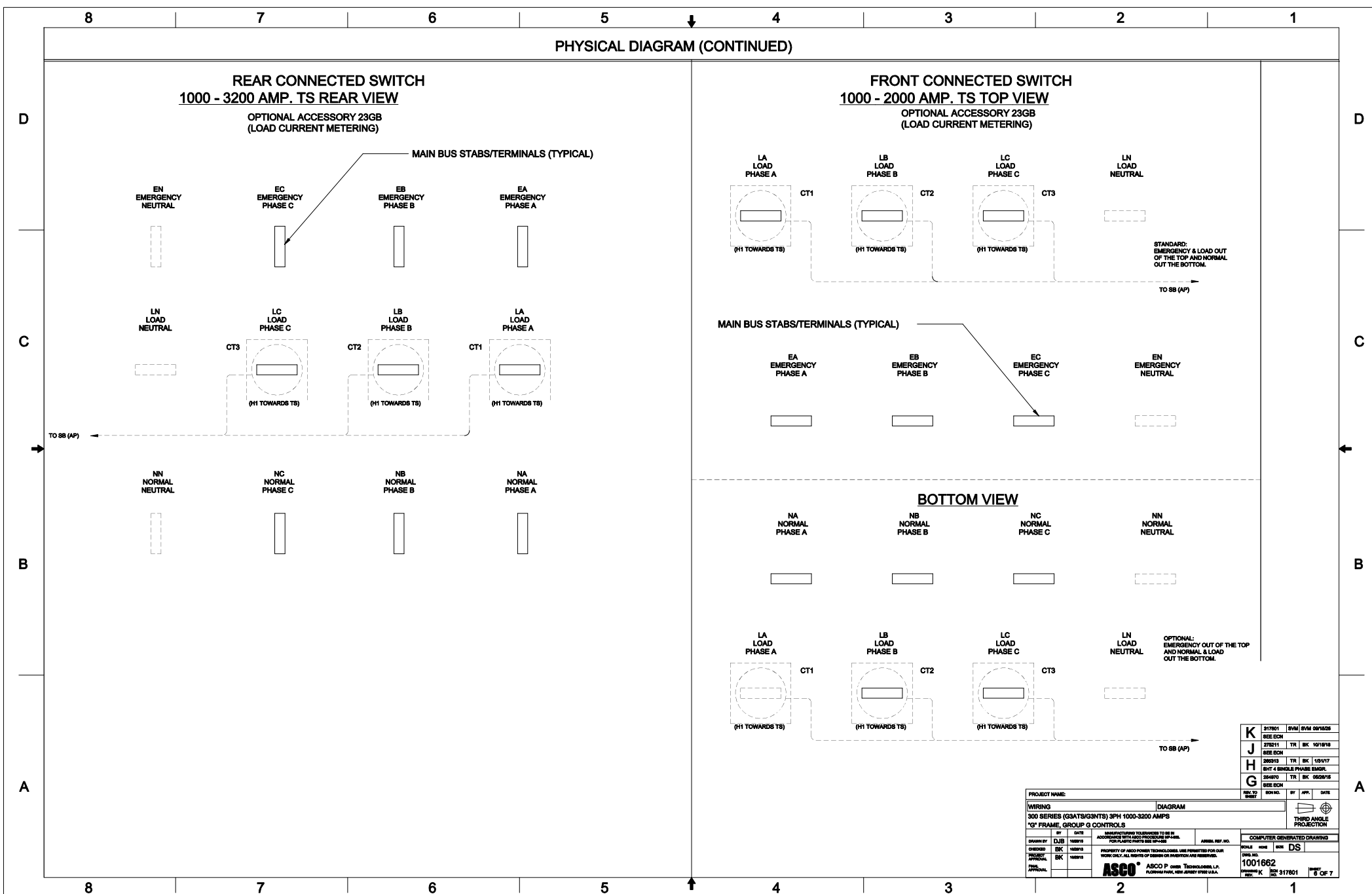
NOTE: PHYSICAL MAY VARY BASED ON  
ENCLOSURE PROVIDED.

### DETAIL A MUS & AUX1 TOP VIEW



K	317801	BVM	01/16/20
J	278211	TR	01/16/18
H	280313	TR	01/16/17
G	280410	TR	01/16/16

PROJECT NAME:	DIAGRAM	SCALE:	DATE:
WIRING	300 SERIES (3GATS/GINTS) 3PH 1000-3200 AMPS	BY:	DATE:
"G" FRAME, GROUP G CONTROLS		CHECKED:	DATE:
DESIGNED BY:	DATE:	APPROVED:	DATE:
CHECKED BY:	DATE:	FINAL APPROVAL:	DATE:
ASCO P. OVER TECHNOLOGIES, L.P.	ASCO P. OVER TECHNOLOGIES, L.P.	COMPUTER GENERATED DRAWING	
PLANNING PAPER, NEW JERSEY 07102 U.S.A.	1001662	SCALE:	DATE:
	317801	BY:	DATE:
		REV:	DATE:



[illegible]

<b>K</b>	317801	SVM	SVM	09/18/25
	SEE ECR			
<b>J</b>	275211	TR	BK	10/16/18
	SEE ECR			
<b>H</b>	266313	TR	BK	1/31/17
	BHT 4 SINGLE PHASE EMGR.			
<b>G</b>	248470	TR	BK	05/28/15
	SEE ECR			