

600A Automatic Transfer Switch

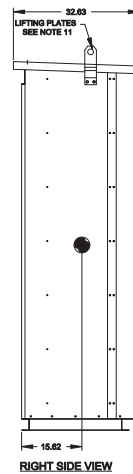
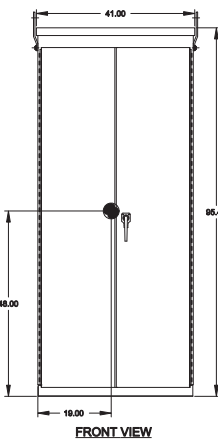
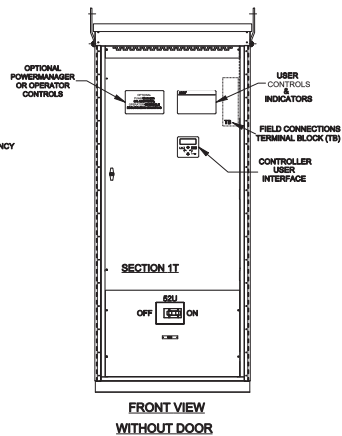
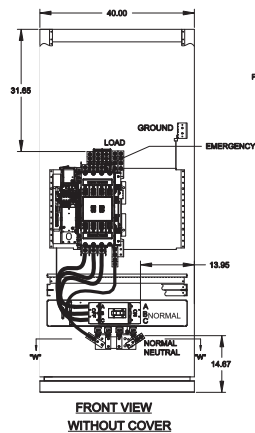
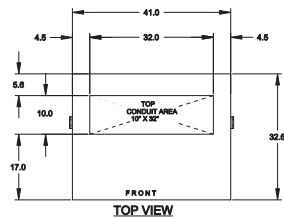
Transfer Switch Details

#2	ATS	AMPS: 0600	QTY: 2
Product	: Series 300	Catalog Number	: J03AUSB30600CGXM
Service Voltage / Hz	: 208V/60Hz	Optional Accessories	: 11BE,44G
Bypass Isolation	: Not Applicable	Product Description	: 300 Series, Automatic Service Entrance Transfer Switch
No. of Switched Poles: 4	: 4	Neutral Configuration	: Switched [B]
Withstand Rating:	: See WCR Table Below	No. of Cables & Lug Size	: See Applicable Outline Drawing
Frame = J, Switch Rating = 0600, Series = 300			
Enclosure	: 3R(M)-UL Type 3R secure double door enclosure (See Disclaimer 3)	Service	: Three Phase, 4-wire
Extended Warranty	: Not Included	Markings	:

#	ACCESSORY DESCRIPTIONS	
	Accessory Code	Description
1	11BE	Adds the following features to the Group G controller: (1) Serial RS-485 Modbus Communications (2) Multi-Schedule Engine Exerciser (3) a 300 Entry Event Log and (4) a common alarm output function. When applied on 3-phase systems it also enables: (1) 3-Phase Emergency Source VLL sensing (2) Phase Rotation Monitoring (3) Emergency Source VLL Unbalance Monitoring.
2	44G	Strip heater w/ thermostat, wired to load terminals: 208-600 volts

D

D



GENERAL NOTES

- FLOOR MOUNTED ENCLOSURE.
TYPE 3R CONSTRUCTED FROM CODE GAUGE STEEL.
FINISH: TYPE 3R, ANSI 81 GRAY POLYESTER SEMI GLOSS ELECTROSTATIC POWDER.
TYPE 3RX EXTERIOR CONSTRUCTED FROM CODE GAUGE STAINLESS STEEL.
(R) EXTERIOR CONSTRUCTED FROM TYPE 304 STAINLESS STEEL.
(S) EXTERIOR CONSTRUCTED FROM TYPE 316 STAINLESS STEEL.
- EXTERIOR DOORS HAVE PADLOCKABLE HANDLES WITH 3-POINT LATCH
- DESIGNED FOR FRONT ACCESS ONLY.
- RECOMMENDED CLEARANCES: FRONT: 36" REAR: NONE.
- LIFTING PLATES: SECTIONS ARE SUPPLIED WITH LIFTING PLATES. INSPECT PLATES FOR DAMAGE AND TORQUE BOLTS TO 45 FT LBS BEFORE USE. REFER TO ANSINEMA PB 2.1 FOR PROPER HANDLING OF EQUIPMENT. AFTER INSTALLATION OF SECTION, REMOVE LIFTING PLATES. REINSTALL BOLTS INTO EXTERIOR HOLES AND TORQUE TO APPROXIMATELY 20 FT LBS.
- SECTION 1 & SECTION 1T SHIP AS 1 UNIT.
- CENTER OF GRAVITY.
- APPROXIMATE WEIGHT: 1383 LBS [627 KG].

SYSTEM NOTES

- SYSTEM RATING: 600 AMPS, 3φ, 4W OR 1φ, 3W.
SHORT CIRCUIT RATING: 50,000 RMS SYM @ 480V.
THE EMERGENCY SOURCE MUST BE PROTECTED BY A REMOTE OVERCURRENT PROTECTION DEVICE AS LISTED ON THE MARKINGS ON THE TRANSFER SWITCH.
- ALL BUS IS SILVER-PLATED COPPER, BASED ON 1000A PER SQ. IN. DENSITY.
- GROUND: 20% RATED.
- NEUTRAL: 100% RATED.
- APPLICABLE LABEL(S): U.L. 891, SUITABLE ONLY FOR USE AS SERVICE EQUIPMENT.

TRANSFER SWITCH

- J FRAME AUTOMATIC TRANSFER SWITCH.
- TRANSFER SWITCH RATING: 600 AMPS
SHORT CIRCUIT RATING WHEN PROTECTED BY A CIRCUIT BREAKER
TIME RESPONSE, MAXIMUM 0.05 SECONDS:
42,000 RMS SYM @ 480V (SWITCHED AND SOLID NEUTRAL).
35,000 RMS SYM @ 480V (OVERLAPPING NEUTRAL).
SPECIFIC BREAKER RATING: 50,000 RMS SYM @ 480V.
- A FULL RATED NEUTRAL CONNECTION FOR EACH SOURCE AND THE LOAD IS OPTIONAL. WHEN PROVIDED IT IS IN ONE OF THE FOLLOWING FORMATS.
A. SOLID NEUTRAL
B. SWITCHED NEUTRAL POLE
C. OVERLAPPING NEUTRAL POLE
- UL 1008

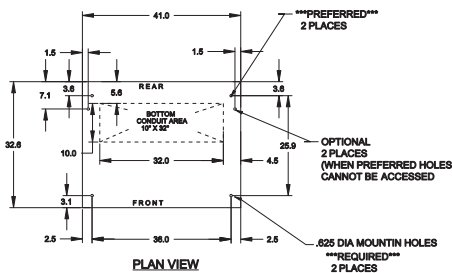
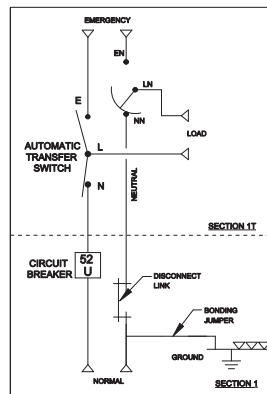
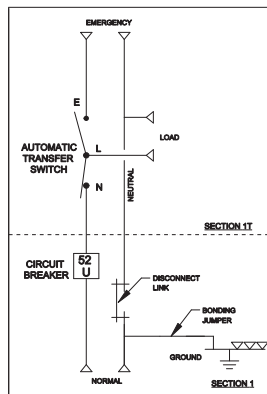
TERMINATIONS 600A

- SUPPLIED WITH MECHANICAL (SCREW TYPE) LUGS FOR CU/AL CABLE.
NORMAL: (2) 2/0 - 500MCM PER PHASE & NEUTRAL
LOAD: (2) #2 - 600MCM PER PHASE & NEUTRAL
EMERGENCY: (2) #2 - 600MCM PER PHASE & NEUTRAL
GROUND: (6) 1/0 - 600MCM
A. SUITABLE WIRE BENDING SPACE IS PROVIDED AS PER NEC.
- OPTIONAL LUGS MAY BE SUPPLIED.

CIRCUIT BREAKER: ITEM 52U

- SQUARE "D" 80% RATED TYPE "LJL", 600AF/800AT MANUALLY OPERATED, ELECTRONIC TRIP WITH LONG DELAY AND INSTANTANEOUS TRIP SETTINGS.
SHORT CIRCUIT RATING: AIC 65,000 RMS SYM @ 480V.
- U.L. 489

ONE LINE DIAGRAMS



B	307450	NRK	[MCH]	05/01/24
SEE BOM				
A	309528	NRK	[MCH]	12/05/23
SEE BOM				
307450	1	REP	FIN	07-14-21
NEW ISSUE				
REV. NO.	REV.	BY	APP.	DATE
PROJECT NAME:	MOUNTING			
OUTLINE	JAUS 600A, L/L SERVICE ENTRANCE BREAKER ON NORMAL			
TYPE 3R/3RX	96 X 41 X 33, SECTION 1 AND 1T			
DRAWN BY	REV	DATE	MANUFACTURING TOLERANCES TO BE IN ACCORDANCE WITH ASME Y14.5M-2018. FOR PLASTIC PARTS SEE Y14.5M-2018.	
CHECKED	REV	DATE	PROPERTY OF ASCO POWER TECHNOLOGIES, LLC. USE IS LIMITED TO THE PROJECT AND DATE OF PURCHASE. WORK ONLY. ALL RIGHTS OF DESIGN OR INVENTION ARE RESERVED.	
DESIGN APPROVAL			ASCO P. Ower Technologies, L.P. PLAZA PARK, NEW JERSEY 07093-2444	
FINAL APPROVAL			SCALE: 1" = 10" DS	
			DWG. NO. 862678-058	
			SHEET 1 OF 1	

A

THREE PHASE WIRING FOR ASCO³⁰⁰ SERIES TRANSFER SWITCHES (J3ATS/J3NTS) 600 AMPERES WITH GROUP G CONTROLS

GENERAL INFORMATION

COMMON ALARM & NOT IN AUTO SIGNALING FEATURES

A SET OF FORM C CONTACTS IS PROVIDED ON THE GROUP G CONTROLLER AS "OP1". THE FEATURE SETTING OF "OP1" CAN BE SET TO OPERATE THE CONTACTS AS A "NOT IN AUTO" SIGNAL.

WHEN "OP1" IS SET FOR "NOT IN AUTO", THE OUTPUT CONTACTS CHANGE POSITION WHEN THE TRANSFER IS BEING INHIBITED FROM TRANSFERRING TO THE EMERGENCY SOURCE (FEATURE 34B) OR THE TRANSFER SWITCH HAS BEEN SET FOR NON-AUTOMATIC (MANUAL) OPERATION.

WHEN OPTIONAL ACCESSORY 11BE "SOFTWARE BUNDLE" IS PART OF THE TRANSFER SWITCH ASSEMBLY, "OP1" MAY ALTERNATIVELY SET FOR A "COMMON ALARM" SIGNAL. THE OUTPUT CONTACTS CHANGE POSITION WHEN A "COMMON ALARM" IS NOT PRESENT AND RESET WHEN A "COMMON ALARM" CONDITION IS PRESENT. THE "COMMON ALARM" SIGNAL CONDITIONS ARE SELECTABLE.

ADDITIONAL "COMMON ALARM" AND "NOT IN AUTO" CONTACTS ARE AVAILABLE WHEN OPTIONAL ACCESSORY 18RX (RELAY EXPANSION MODULE) IS INCLUDED IN THE TRANSFER SWITCH ASSEMBLY. OUTPUT CONTACTS "OP2 AND/OR "OP3" WILL PROVIDE SIGNAL FUNCTIONS WHEN THE FEATURE SETTING OF EACH IS SET TO OPERATE AS "COMMON ALARM" OR "NOT IN AUTO".

CONTACTS ARE RATED 5 AMPS RESISTIVE AT 30 VDC MAXIMUM, 100 mA AT 5 VDC MINIMUM

REFER TO USER'S GUIDE, ASCO GROUP G CONTROLLER FOR AUTOMATIC & NON-AUTOMATIC TRANSFER SWITCHES, PART NUMBER 381333-400 FOR SETTING INFORMATION.

EXTERNAL POWER SUPPLY COMPATIBILITY

USE OF AN EXTERNAL POWER SUPPLY IS USEFUL WHEN REQUIRED TO EXTEND THE FOLLOWING CONTROLLER TIME DELAYS BEYOND 6 SECONDS;

FEATURE 1C - OVERRIDE MOMENTARY NORMAL SOURCE OUTAGES
FEATURE 1F - OVERRIDE MOMENTARY EMERGENCY SOURCE OUTAGES

AN EXTERNAL POWER SUPPLY IS ALSO USEFUL WHEN THE TRANSFER SWITCH IS USED WITH COMMUNICATIONS FEATURES BY ENABLING THE CONTROLLER TO CONTINUE COMMUNICATING

AN EXTERNAL POWER SOURCE MAY BE PROVIDED TO THE CONTROLLER, UNTIL THE NORMAL OR EMERGENCY SOURCE IS AVAILABLE, BY USE OF:

- AN EXTERNAL 24 VDC POWER SUPPLY WITH ACCESSORY 18RX (RELAY EXP) OR

- OPTIONAL ACCESSORY TOP (UNINTERRUPTIBLE POWER SUPPLY MODULE),

19

EXTERNAL 24 VDC POWER SUPPLY *1G*

AN EXTERNAL 24 VDC POWER SUPPLY MAY BE USED TO POWER THE CONTROLLER WHEN ACCESSORY 18RX (RELAY EXPANSION MODULE) IS INCLUDED IN THE TRANSFER SWITCH ASSEMBLY. OUTPUT CONTACTS "OPZ" WILL PROVIDE EXTERNAL 24 VDC POWER SUPPLY FUNCTIONALITY WHEN ITS FEATURE SETTING IS SET TO OPERATE AS "IG". ADDITIONALLY, JUMPERS MUST BE RECONFIGURED ON ACCESSORY 18RX (RELAY EXPANSION MODULE) TO ENABLE THIS FUNCTION AS FOLLOWS;

REMOVE JUMPERS "J1" 1-2 & "J1" 3-4
CONNECT JUMPERS "J1" 5-7 & "J1" 6-8

THE OUTPUT CONTACTS CHANGE POS
SOURCE IS AVAILABLE AND RESET WH

PRICED-FUNCTION SOFTWARE BUNDLE

WHEN OPTIONAL ACCESSORY 11BE IS PART OF THE TRANSFER SWITCH ASSEMBLY, AN ADVANCED-FUNCTION SOFTWARE BUNDLE IS AVAILABLE TO PERFORM THE FOLLOWING FUNCTIONS;

- SERIAL COMMUNICATIONS (RS-485)
- PROGRAMMABLE ENGINE EXERCISER
- EVENT LOG
- COMMON ALARM SIGNAL CAPABILITY ON GROUP G CONTROLLER "OP1" OUTPUT.

- (3 PHASE SENSING ONLY)
- 3 PHASE EMERGENCY SOURCE SENSING.
- PHASE ROTATION SENSING.
- EMERGENCY VOLTAGE UNBALANCE SENSING.

REFER TO USER'S GUIDE, ASCO GROUP G CONTROLLER FOR AUTOMATIC & NON-AUTOMATIC TRANSFER SWITCHES, PART NUMBER 381333-400 FOR INFORMATION ON THESE FUNCTIONS.

NOTES

1. SWITCH SHOWS DE-ENERGIZED CONNECTED TO NORMAL SOURCE.
2. DEVICE SYMBOLS AND DESIGNATIONS ARE IN ACCORDANCE WITH NEMA PUB. ICS 1, PART 1-1974.
3. ALL WIRING IS #14 AWG. TINNED, STRANDED COPPER UNLESS OTHERWISE INDICATED.
4. ANY INDICATING CONNECTION POINTS.
5. INDICATES FACTORY CONNECTIONS.
6. CONNECTION POINTS THAT HAVE BOTH CUSTOMER CONNECTIONS AND FACTORY CONNECTIONS ARE INDICATED BY TWO SETS OF CONNECTION POINTS.
7. THE TRANSFER UNIT IS MOUNTED ON THE BACK INSIDE SURFACE OF THE ENCLOSURE.
8. THE CONTROL PANEL AND ANY OTHER ACCESSORIES ARE MOUNTED ON THE INSIDE SURFACE OF THE ENCLOSURE.
9. AN OPERATORS MANUAL IS FURNISHED WITH EACH AUTOMATIC TRANSFER UNIT.
10. REMAINING STRAP ON CONTROL PANEL IS APPLIED TO THE UTILIZATION AND OPERATION OF THE SWITCH.
11. REMAINING STRAP ON CONTROL PANEL IS APPLIED TO THE UTILIZATION AND OPERATION OF THE SWITCH.
12. AT LOWER LEFT CORNER, PANEL MOUNTING STUDS.

CATALOG NUMBER SUFFIXES

TS FRAME	CATALOG TYPE	NEUTRAL TYPE	PHASE POLES	AMPS	VOLT CODE	CONTROLLER	OPTIONAL ACCESSORY	ENCLOSURE CODE
J	3ATS 3NTS	A B	3	600	C D E F G H J K L M N P Q R	G	X	C F G H L M N P Q
							BLANK FOR NONE	BLANK FOR OPEI TYPE

EXPLANATION OF CATALOG NUMBER CODE

NEUTRAL TYPE		VOLTAGE CODES 3 PHASE 3 WIRE 480V 30 OR 60 Hz		ENCLOSURE CODES		
CODE	DESCRIPTION	CODE	NOMINAL VOLTAGE	CODE	TYPE	DESCRIPTION
A B	SOLID SWITCHING			BLANK	1	OPEN TYPE (NO ENCLOSURE)
		C	208			GENERAL PURPOSE, INDOOR
		D	220	F	3R	OUTDOOR, RAINPROOF, SLEET & ICE RESISTANT
		E	230	G	4	INDOOR/OUTDOOR, WATERTIGHT & DUSTTIGHT
		F	240	H	4X	TYPE 4 PLUS CORROSION RESISTANCE (STAINLESS STEEL)
		G	277	L	12	INDOOR, INDUSTRIAL ENVIRONMENTS, OILTIGHT & DUSTTIGHT
		H	380			(SECURE ENCLOSURES)
		J	400			OUTDOOR, RAINPROOF, SLEET & ICE RESISTANT
		K	415	M	3R	INDOOR/OUTDOOR, WATERTIGHT & DUSTTIGHT
		M	480	P	4X	TYPE 4 PLUS CORROSION RESISTANCE (STAINLESS STEEL)
		N	480	Q	12	INDOOR, INDUSTRIAL ENVIRONMENTS, OILTIGHT & DUSTTIGHT
		P	550*			
		Q	575*			
		R	600*			

CATALOG NUMBER _____
ASCO® CERTIFIED TO _____
 S.O. _____

BY _____
DATE _____

FORM REV 9

PROJECT NAME	
--------------	--

WIRING
200 SERIES 12


"J" FRAME, GR

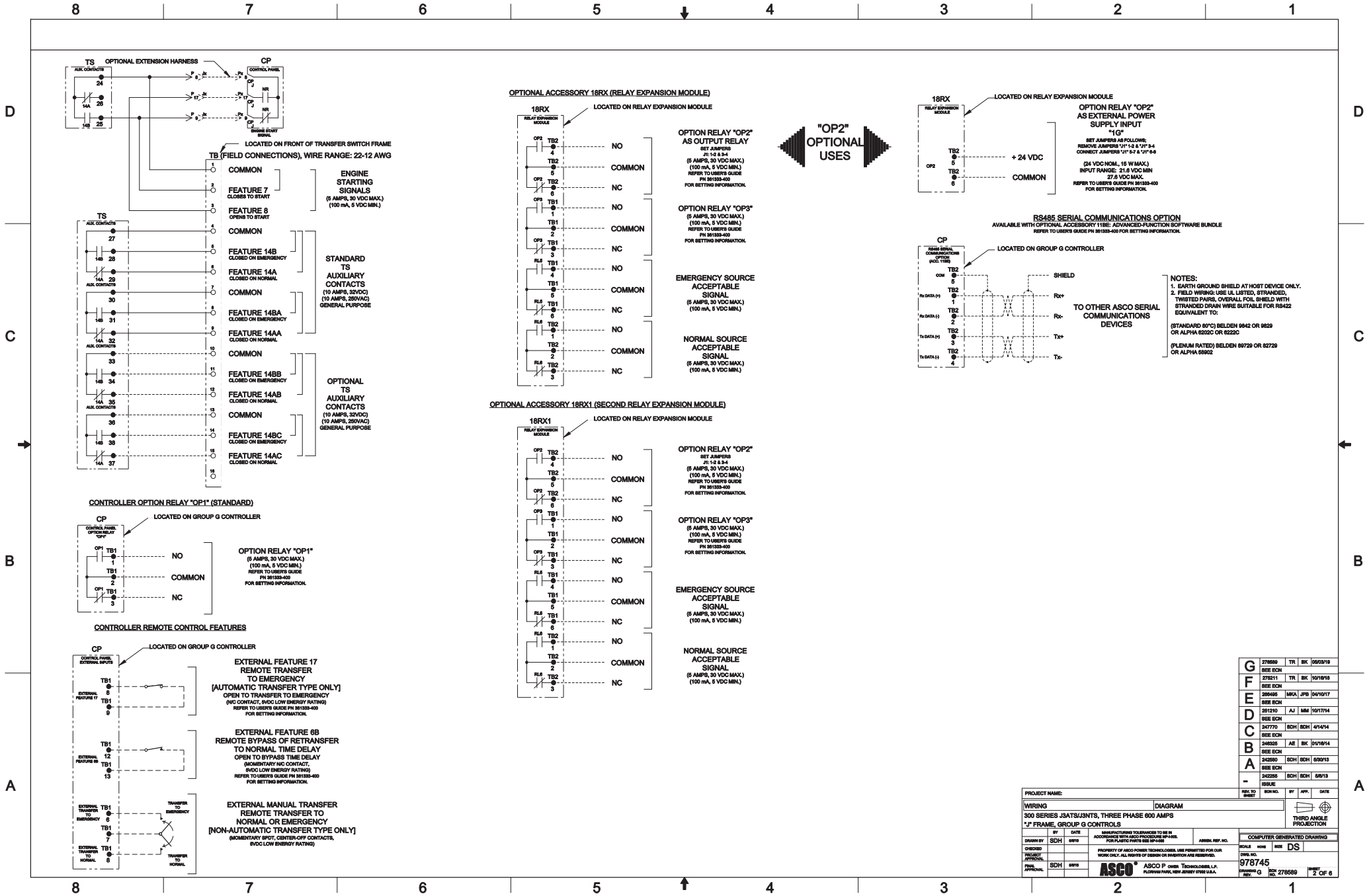
	BY
	DATE

DRAWN BY	SDH
CHECKED	

PROJECT APPROVAL	
------------------	--

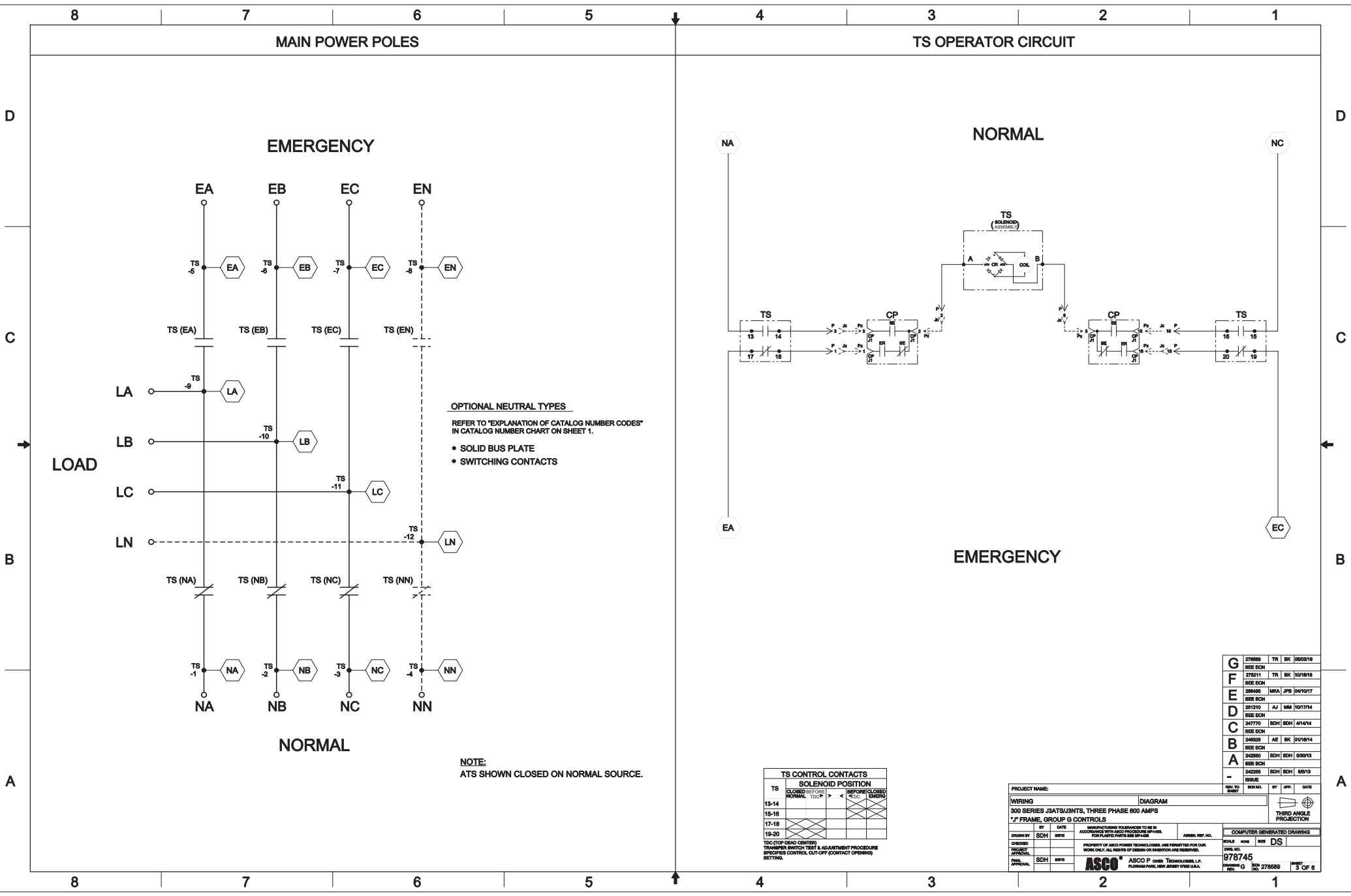
FINAL APPROVAL	SDH
-------------------	-----

MANUFACTURING TOLERANCES TO BE IN ACCORDANCE WITH ASCO PROCEDURES MP-4000. FOR PLASTIC PARTS SEE MP-4000	ASSEMB. REF. NO.	COMPUTER GENERATED DRAWING			
PROPERTY OF ASCO POWER TECHNOLOGIES, L.P. USE PERMITTED FOR THE PROJECT FOR WHICH IT WAS ISSUED. ALL RIGHTS OF DESIGN OR INVENTION ARE RESERVED.		SCALE	INCH	SIZE	DS
		DWG. NO.		978745	
 ASCO POWER TECHNOLOGIES, L.P. FLOPPY PUMP, NEW JERSEY 07102 U.S.A.		DRAWING	G	REV	278580
				INSET	1 OF 2



PROJECT NAME:		DIAGRAM		300 SERIES JSATS/JINTS, THREE PHASE 600 AMPS		"J" FRAME, GROUP G CONTROLS	
DESIGNED BY	SDH	DATE	08/19	MANUFACTURING TO BE USED IN CONJUNCTION WITH ASCO PRODUCTS. SEE INSTRUCTIONS FOR PLASTIC PARTS SEE 804-000	ASCO, INC. NO.	COMPUTER GENERATED DRAWING	SCALE
CHECKED BY	SDH	DATE	08/19	PROPERTY OF ASCO POWER TECHNOLOGIES, INC. PERMITTED FOR OUR WORK ONLY. ALL RIGHTS OF DESIGN OR INVENTION ARE RESERVED.	ASCO, INC.	978745	DS
APPROVED BY	SDH	DATE	08/19	ASCO P. OVER TECHNOLOGIES, L.P. PLACER PARK, NEW JERSEY 07068-0001	ASCO, INC.	978745	2 OF 8

G	27600	TR	8K	05/03/18
F	27611	TR	8K	10/18/18
E	26640	MKA	JPS	04/10/17
D	26120	AJ	MM	10/17/14
C	24770	SDH	SDH	4/14/14
B	24635	AE	8K	10/18/14
A	24380	SDH	SDH	5/30/13
	24355	SDH	SDH	5/6/13
	18106			



OPTIONAL NEUTRAL TYPES
REFER TO "EXPLANATION OF CATALOG NUMBER CODES"
IN CATALOG NUMBER CHART ON SHEET 1.

- SOLID BUS PLATE
- SWITCHING CONTACTS

NOTE:
ATS SHOWN CLOSED ON NORMAL SOURCE.

TS CONTROL CONTACTS	
SOLENOID POSITION	
TS	SOLENOID POSITION
13-14	CLOSED BEFORE NORMAL TDC > < TDC EMERG
15-16	
17-18	
19-20	

TDC (TOP DEAD CENTER)
TRANSFORMER SWITCH TEST & ADJUSTMENT PROCEDURE
SPECIFIED CONTROL, CUT-OFF (CONTACT OPENING)
SETTING.

PROJECT NAME:		DIAGRAM	
WIRING		300 SERIES J3ATS/J3NTS, THREE PHASE 600 AMPS	
BY		DATE	
SDH		08/10	
CHECKED		DATE	
SDH		08/10	
APPROVAL		DATE	
SDH		08/10	
ASCO		ASCO P. OVER TECHNOLOGIES, L.P.	
REV. 1		REV. 1	
278568		278568	
3 OF 8		3 OF 8	

G	278568	TR	8K	08/08/18
F	278211	TR	8K	10/18/18
E	268405	MKA	JPS	04/10/17
D	261210	AJ	MM	10/17/14
C	247770	SDH	SDH	4/14/14
B	246025	AE	AE	10/18/14
A	243580	SDH	SDH	5/20/13
	243580	SDH	SDH	5/20/13
	243580	SDH	SDH	5/20/13
	243580	SDH	SDH	5/20/13

D

C

B

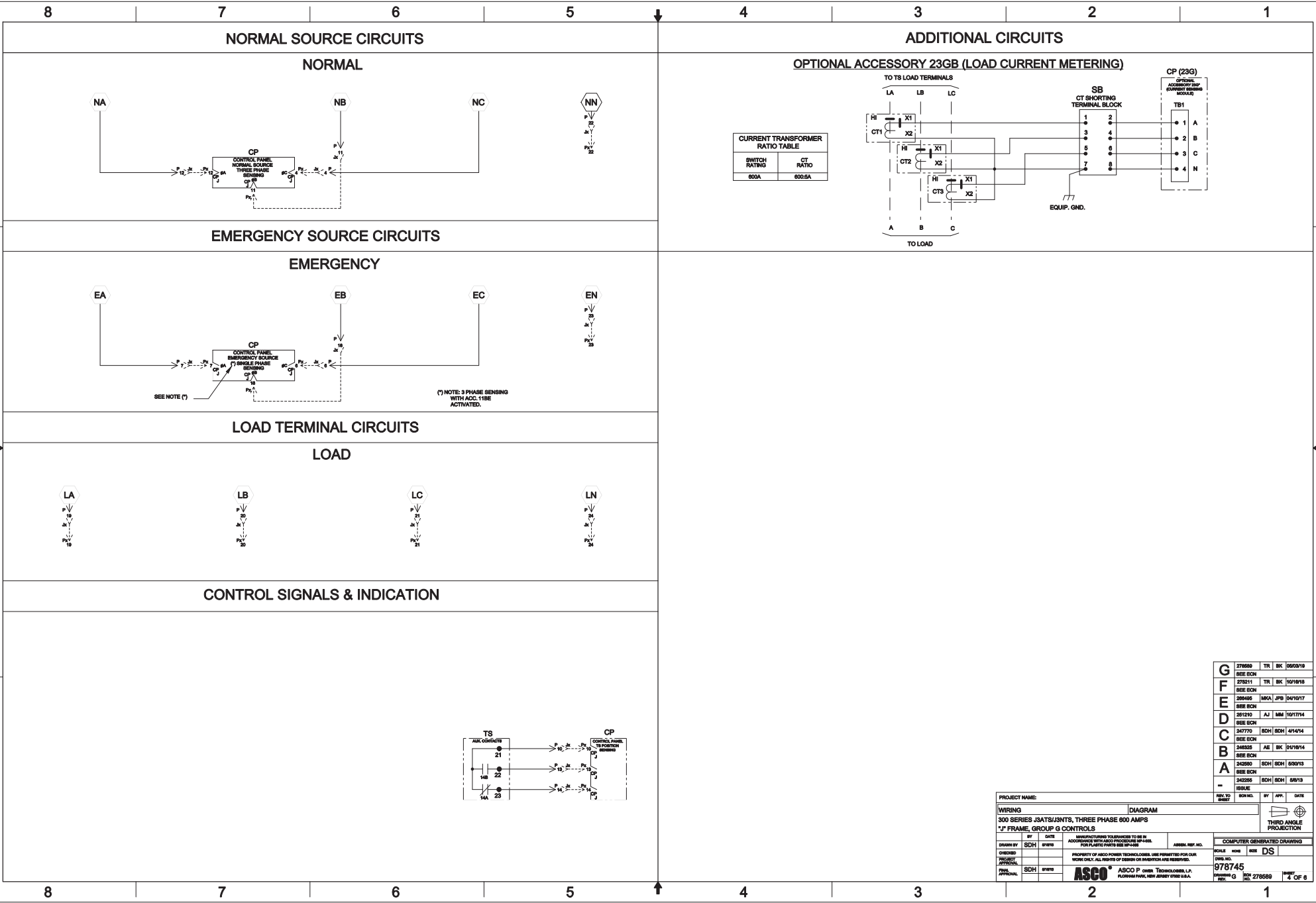
A

D

C

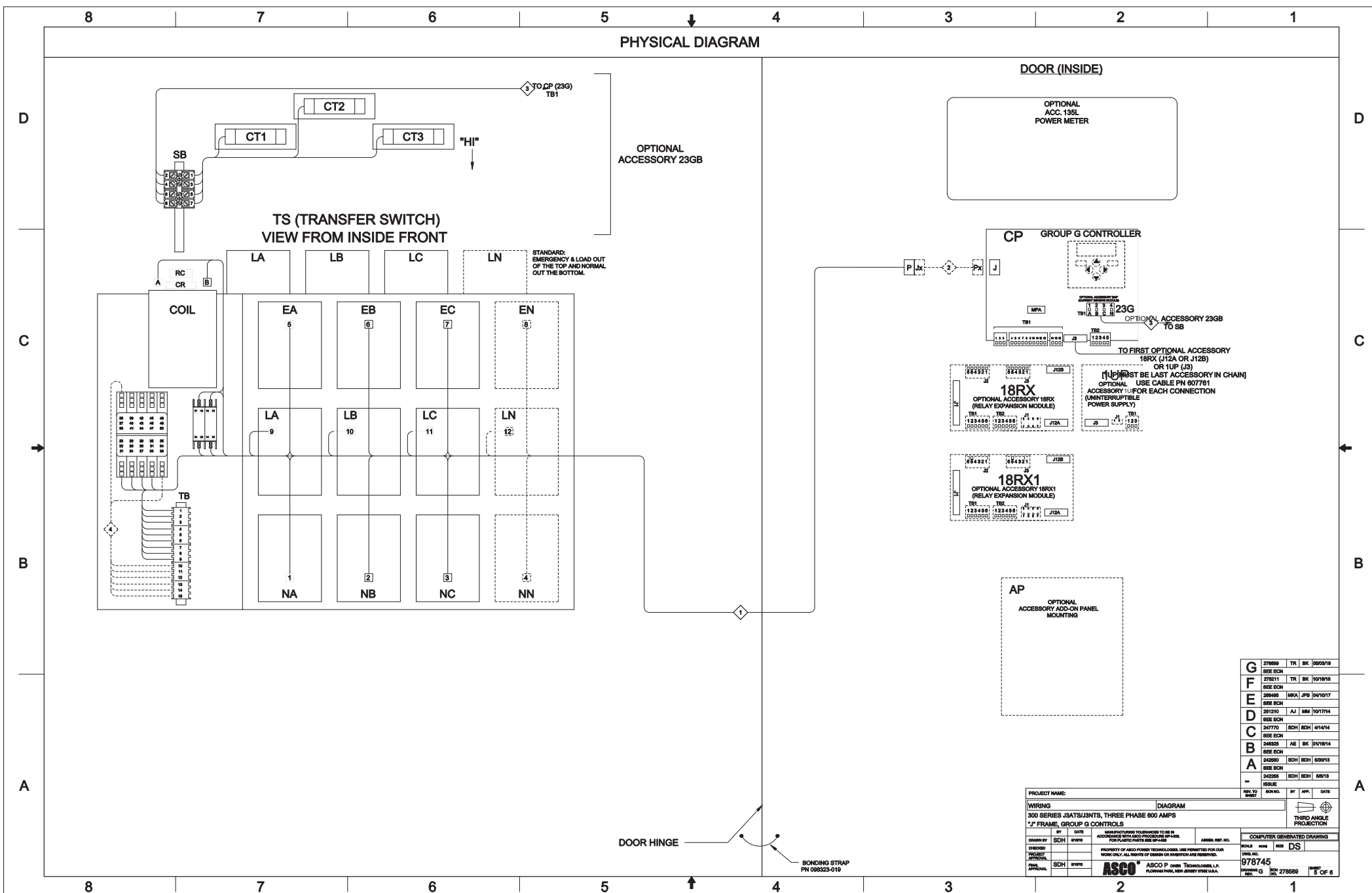
B

A



G	276085	TR	8K	05/03/18
F	276211	TR	8K	10/18/18
E	266405	MKA	JPB	04/10/17
D	261210	AJ	NME	10/17/14
C	247770	SDH	SDH	4/14/14
B	246325	AE	8K	01/18/14
A	243560	SDH	SDH	5/30/13
	243595	SDH	SDH	5/6/13
	181646			
REV. TO	SDH	BY	APP.	DATE
181646				

PROJECT NAME:	WIRING	DIAGRAM
300 SERIES J3ATS/J3NTS, THREE PHASE 600 AMPS		
"J" FRAME, GROUP G CONTROLS		
DESIGNED BY	SDH	DATE
CHECKED BY	SDH	DATE
PROJECT APPROVAL	SDH	DATE
FINAL APPROVAL	SDH	DATE
MANUFACTURING TO BE USED BY	ASCO P. OVER TECHNOLOGIES, L.P.	PLANT/PAVING, NEW JERSEY 07095-0001
PROPERTY OF ASCO POWER TECHNOLOGIES, L.P. NO REUSE OR REPRODUCTION WITHOUT PERMISSION OF ASCO POWER TECHNOLOGIES, L.P.		
SCALE	1:1	DS
DWG. NO.	978745	
ISSUED BY	SDH	DATE
REV.	1	05/03/18



WIRE RUN LISTING

WIRE No.	HARNESS LOCATOR	CLR	AWG
1 P-1,TS-18	HARNESS 781247 (P) MAIN TS		18
2 P-2,TS-4			
3 P-3,TS-14			
4 P-4,TS-9			
5 TS-3,TS-15			
6 P-5,TS-8			
7 P-6,TS-7			
8 TS-7,TS-19			
9 P-7,TS-5			
10 TS-6,TS-17			
11 P-8,TS-24			
12 TS-24,TS-1			
13 P-9,TS-25			
14 TS-25,TS-2			
15 P-10,TS-21			
16 P-11,TS-2			
17 TS-12,TS-1			
18 TS-1,TS-13			
19 P-13,TS-22			
20 P-14,TS-23			
21 P-15,TS-16			
22 P-16,TS-20			
23 P-17,TS-3			
24 P-18,TS-6			
25 P-20,TS-10			
26 P-21,TS-11			
27 P-22,TS-4			
28 P-23,TS-6			
29 P-24,TS-12			
30 TS-27,TS-4			
31 TS-28,TS-5			
32 TS-29,TS-6			
33 TS-30,TS-7			
34 TS-31,TS-8			
35 TS-32,TS-9			
REMOVE WIRES			
ADD WIRES			

WIRE No.	HARNESS LOCATOR	CLR	AWG
1 P-1,TS-18	HARNESS 300320-005 (P) MAIN TS		18
2 P-2,TS-4			
3 P-3,TS-14			
4 P-4,TS-9			
5 TS-3,TS-15			
6 P-5,TS-8			
7 P-6,TS-7			
8 TS-7,TS-19			
9 P-7,TS-5			
10 TS-6,TS-17			
11 P-8,TS-24			
12 TS-24,TS-1			
13 P-9,TS-25			
14 TS-25,TS-2			
15 P-10,TS-21			
16 P-11,TS-2			
17 TS-12,TS-1			
18 TS-1,TS-13			
19 P-13,TS-22			
20 P-14,TS-23			
21 P-15,TS-16			
22 P-16,TS-20			
23 P-17,TS-3			
24 P-18,TS-6			
25 P-20,TS-10			
26 P-21,TS-11			
27 P-22,TS-4			
28 P-23,TS-6			
29 P-24,TS-12			
30 TS-27,TS-4			
31 TS-28,TS-5			
32 TS-29,TS-6			
33 TS-30,TS-7			
34 TS-31,TS-8			
35 TS-32,TS-9			
REMOVE WIRES			
ADD WIRES			

WIRE No.	HARNESS LOCATOR	CLR	AWG
1 P-1,TS-18	HARNESS 300320-005 (P) MAIN TS		18
2 P-2,TS-4			
3 P-3,TS-14			
4 P-4,TS-9			
5 TS-3,TS-15			
6 P-5,TS-8			
7 P-6,TS-7			
8 TS-7,TS-19			
9 P-7,TS-5			
10 TS-6,TS-17			
11 P-8,TS-24			
12 TS-24,TS-1			
13 P-9,TS-25			
14 TS-25,TS-2			
15 P-10,TS-21			
16 P-11,TS-2			
17 TS-12,TS-1			
18 TS-1,TS-13			
19 P-13,TS-22			
20 P-14,TS-23			
21 P-15,TS-16			
22 P-16,TS-20			
23 P-17,TS-3			
24 P-18,TS-6			
25 P-20,TS-10			
26 P-21,TS-11			
27 P-22,TS-4			
28 P-23,TS-6			
29 P-24,TS-12			
30 TS-27,TS-4			
31 TS-28,TS-5			
32 TS-29,TS-6			
33 TS-30,TS-7			
34 TS-31,TS-8			
35 TS-32,TS-9			
REMOVE WIRES			
ADD WIRES			

WIRE No.	ADDITIONAL WIRES	CLR	AWG
1			18
2			
3			
4			
5			
6			
7			
8			
9			
10			
11			
12			
13			
14			
15			
16			
17			
18			
19			
20			
21			
22			
23			
24			
25			
26			
27			
28			
29			
30			
31			
32			
33			
34			
35			
36			
37			
38			
39			
40			
41			
42			
43			
44			
45			
46			
47			
48			
49			
50			
51			
52			
53			
54			
55			
56			
57			
58			
59			
60			
61			
62			
63			
64			
65			
66			
67			
68			
69			
70			
71			
72			
73			
74			
75			
76			
77			
78			
79			
80			
81			
82			
83			
84			
85			
86			
87			
88			
89			
90			
91			
92			
93			
94			
95			
96			
97			
98			
99			
100			

PROJECT NAME:		WIRING		DIAGRAM	
300 SERIES JSATS/JNITS, THREE PHASE 600 AMPS					
"J" FRAME, GROUP G CONTROLS					
BY	DATE	MANUFACTURING TOLERANCES TO BE IN ACCORDANCE WITH ASCO PROTOCOLS BY PARTS FOR PLASTIC PARTS SEE SP-400	ASCO, INC. NO.	COMPUTER GENERATED DRAWING	
SDH	08/92			SCALE	SIZE DS
CHECKED		PROPERTY OF ASCO POWER TECHNOLOGIES, LLC. NO REUSE OR REPRODUCTION OF THIS DRAWING IS PERMITTED WITHOUT THE WRITTEN PERMISSION OF ASCO POWER TECHNOLOGIES, LLC.		DWG. NO.	978745
APPROVED				ISSUED BY	SDH
DATE				REV.	NO. 278568
		ASCO		ASCO POWER TECHNOLOGIES, LLC. PLASMID PARK, NEW JERSEY 07093-0001	
				SHEET 5 OF 8	

G	278568	TR	8K	08/03/92
F	278211	TR	8K	10/18/93
E	268405	MKA	JPS	04/10/97
D	261210	AJ	MM	10/17/94
C	247770	SDH	SDH	4/14/94
B	246025	AE	8K	01/18/94
A	243580	SDH	SDH	5/20/93
	243585	SDH	SDH	5/20/93
	243586	SDH	SDH	5/20/93