

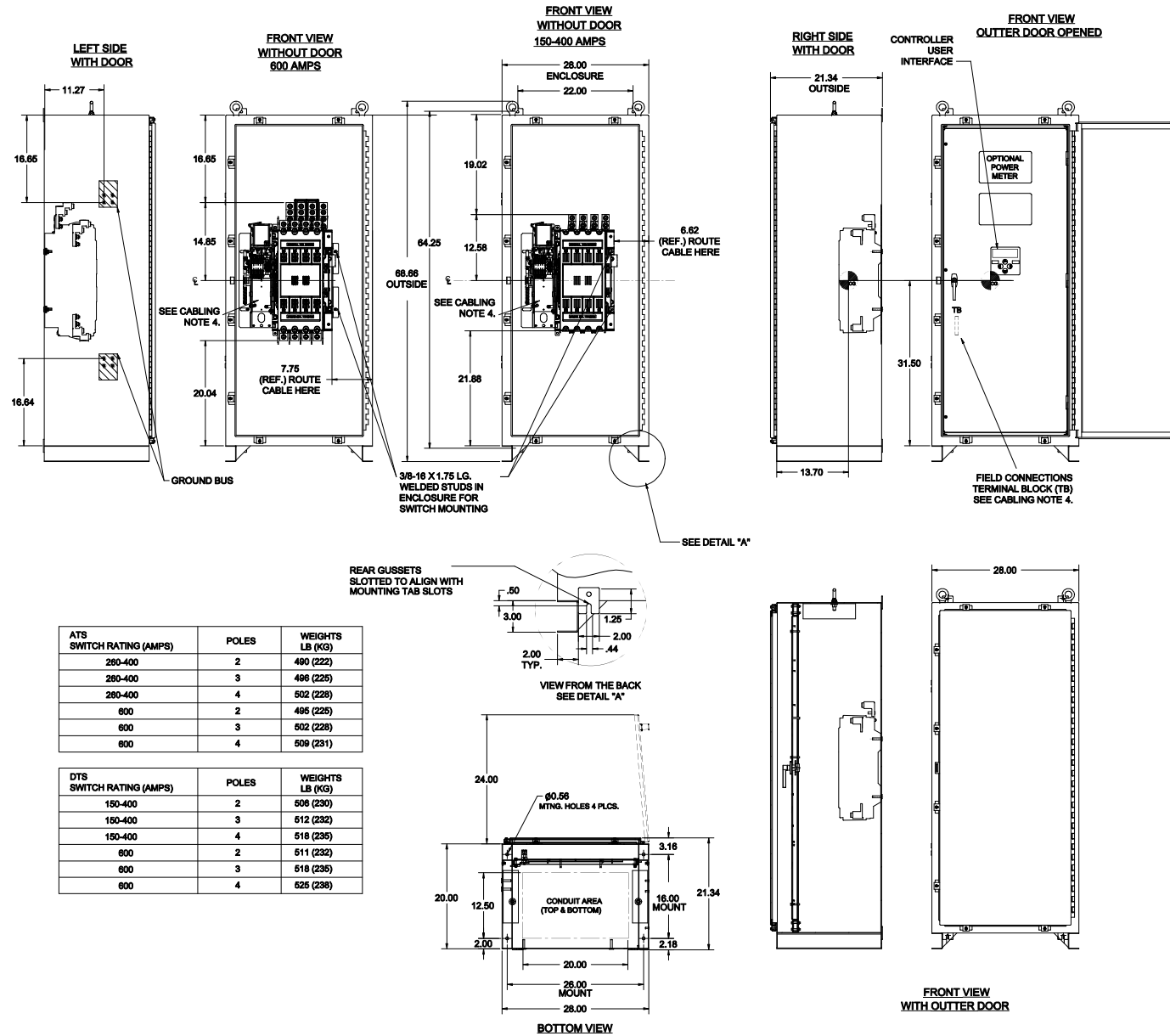
# ATS Submittal

## Transfer Switch Details

#7	ATS	AMPS: 0600	QTY: 3
Product	: Series 300	Catalog Number	: J03ATSB30600CGXM
Service Voltage / Hz	: 208V/60Hz	Optional Accessories	: 11BE,44G
Bypass Isolation	: Not Applicable	Product Description	: 300 Series, Automatic Open Transition Transfer Switch
No. of Switched Poles: 4	: 4	Neutral Configuration	: Switched [B]
Withstand Rating:	: See WCR Table Below	No. of Cables & Lug Size	: 2, 1/0 AWG to 600 MCM
Frame = J, Switch Rating = 0600, Series = 300			
Enclosure	: 3R(M)-UL Type 3R secure double door enclosure (See Disclaimer 3)	Service	: Three Phase, 4-wire
Extended Warranty	: Not Included	Markings	:

#	ACCESSORY DESCRIPTIONS	
	Accessory Code	Description
1	11BE	Adds the following features to the Group G controller: (1) Serial RS-485 Modbus Communications (2) Multi-Schedule Engine Exerciser (3) a 300 Entry Event Log and (4) a common alarm output function. When applied on 3-phase systems it also enables: (1) 3-Phase Emergency Source VLL sensing (2) Phase Rotation Monitoring (3) Emergency Source VLL Unbalance Monitoring.
2	44G	Strip heater w/ thermostat, wired to load terminals: 208-600 volts

# OUTLINE FOR ASCO SERIES 150-600 AMPERE "J" FRAME (3ATS,3NTS,3ADTS,3NDTS) FRONT CONNECTED TRANSFER SWITCHES TYPE 3R/4/4X/12 SECURE ENCLOSURE



- ## GENERAL NOTES
- TYPE 3R/4X/12 ENCLOSURE. FREE STANDING, FLOOR OR WALL MOUNTABLE. 14 GAUGE CONSTRUCTION.
  - DOOR HINGED ON RIGHT SIDE. LOCKABLE HASP ON LEFT SIDE. DOOR CLAMPS LEFT, TOP, AND BOTTOM.
  - FINISH: TYPE 3R/4/12: ANSI #1 GRAY POLYESTER SEMI GLOSS ELECTROSTATIC POWDER.  
TYPE 4X (V): EXTERIOR CONSTRUCTED OF CODE GAUGE TYPE 304 STAINLESS STEEL.  
TYPE 4X (V): EXTERIOR CONSTRUCTED OF CODE GAUGE TYPE 316 STAINLESS STEEL.  
OTHER ANSI COLORS AVAILABLE CONSULT FACTORY UL RECOGNIZED.
  - RECOMMENDED CLEARANCES:  
FRONT: 24 INCHES  
A. 20 % RATED GROUND BUS IS PROVIDED.  
B. UNIT IS DESIGNED FOR COMBINATION TOP AND BOTTOM CABLE ENTRY. THE STANDARD SWITCH CONFIGURATION IS FOR TOP LUGS EMERGENCY AND LOAD AND BOTTOM LUGS NORMAL.
  - A FULL RATED NEUTRAL CONNECTION FOR EACH SOURCE AND THE LOAD IS OPTIONAL. WHEN PROVIDED IT IS IN ONE OF THE FOLLOWING FORMATS AS SPECIFIED BY THE CATALOG NO. NEUTRAL TYPE:  
A. SOLID COPPER BUS NEUTRAL  
B. SWITCHED NEUTRAL POLE  
C. CENTER OF GRAVITY.
  - WHEN INSTALLING GROUND LUGS TO TYPE 4 ENCLOSURE, REMOVE HARDWARE FROM STUDS AND REMOVE MASKING PLATES TO EXPOSE UNPAINTED SURFACE.

- ## CABLING NOTES
- ALL SIZES SUPPLIED STANDARD WITH MECHANICAL (SCREW TYPE) LUGS. (SEE AMP SIZE BELOW)  
A. LUG MATERIAL: ALUMINUM ALLOY 6061-T6 WITH ELECTRO TIN PLATED FINISH.  
B. SCREW MATERIAL: ALUMINUM ALLOY 6062-T6 WITH ELECTRO TIN PLATED FINISH.  
C. UL LISTED, CSA CERTIFIED.  
D. LUG SCREW TIGHTENING TORQUE PER UL 489B: 19 FT.-LBS.  
E. SUITABLE WIRE BENDING SPACE IS PROVIDED. (SEE AMP SIZE BELOW)
  - CONSULT FACTORY FOR OTHER TERMINATION REQUIREMENTS.
  - GROUND LUGS ARE PROVIDED STANDARD AS FOLLOWS. (SEE AMP SIZE BELOW)
  - CUSTOMER TERMINAL BLOCKS:  
THE TB WILL BE MOUNTED ON THE TRANSFER SWITCH FRAME AS INDICATED

- ## NOTES 150-400 AMP SWITCHES
- SUPPLIED WITH STANDARD MECHANICAL (SCREW TYPE) LUGS ON THE NORMAL, EMERGENCY & LOAD BUS STABS. ONE (1) LUG PER PHASE AND NEUTRAL EACH SUITABLE FOR CONNECTION OF TWO (2) 1/0 -250MCM CU/AL CABLES OR ONE (1) #4 -600MCM CU/AL CABLE.  
A. SUITABLE WIRE BENDING SPACE IS PROVIDED FOR UP TO ONE (1) 800MCM CABLE PER TERMINAL PER NEC.
  - GROUND LUGS ARE PROVIDED STANDARD AS FOLLOWS:  
SIX (6) 1/0 -250MCM CU/AL CABLE CONNECTIONS.

- ## NOTES 600 AMP SWITCHES
- SUPPLIED WITH STANDARD MECHANICAL (SCREW TYPE) LUGS ON THE NORMAL, EMERGENCY & LOAD BUS STABS. ONE (1) LUG PER PHASE AND NEUTRAL EACH SUITABLE FOR CONNECTION OF TWO (2) #2 -600MCM CU/AL CABLES.  
A. SUITABLE WIRE BENDING SPACE IS PROVIDED FOR UP TO TWO (2) 800MCM CABLE PER TERMINAL PER NEC.
  - GROUND LUGS ARE PROVIDED STANDARD AS FOLLOWS:  
SIX (6) #2 -600MCM CU/AL CABLE CONNECTIONS.

PROJECT NAME:		COMPOSITE		OUTLINE	
300 SERIES TS "J"		150-600 AMP 3R/4X/12 SECURED			
BY	DATE	MANUFACTURING TO BE USED IN ACCORDANCE WITH ASCO PRODUCT LITERATURE FOR PLASTIC PARTS SEE 300000	ASSEMBLY REF. NO.	COMPUTER GENERATED DRAWING	
DRAWN BY	DATE	PROPERTY OF ASCO POWER TECHNOLOGIES, L.P. NOT TO BE REPRODUCED OR COPIED WITHOUT WRITTEN PERMISSION OF ASCO POWER TECHNOLOGIES, L.P.	SCALE	SIZE	DS
CHECKED	DATE		1001393-006		
APPROVED	DATE		1001393-006		
DATE			1001393-006		
ASCOT		ASCOT P. O. BOX 1001393-006		ASCOT P. O. BOX 1001393-006	
ASCOT		ASCOT P. O. BOX 1001393-006		ASCOT P. O. BOX 1001393-006	

### THREE PHASE WIRING FOR ASCO<sup>300</sup> SERIES TRANSFER SWITCHES (J3ATS/J3NTS) 600 AMPERES WITH GROUP G CONTROLS

## GENERAL INFORMATION

### COMMON ALARM & NOT IN AUTO SIGNALING FEATURES

A SET OF FORM C CONTACTS IS PROVIDED ON THE GROUP G CONTROLLER AS "OP1". THE FEATURE SETTING OF "OP1" CAN BE SET TO OPERATE THE CONTACTS AS A "NOT IN AUTO" SIGNAL.

WHEN "OP1" IS SET FOR "NOT IN AUTO", THE OUTPUT CONTACTS CHANGE POSITION WHEN THE TRANSFER IS BEING INHIBITED FROM TRANSFERRING TO THE EMERGENCY SOURCE (FEATURE 34B) OR THE TRANSFER SWITCH HAS BEEN SET FOR NON-AUTOMATIC (MANUAL) OPERATION.

WHEN OPTIONAL ACCESSORY 11BE "SOFTWARE BUNDLE" IS PART OF THE TRANSFER SWITCH ASSEMBLY, "OP1" MAY ALTERNATIVELY SET FOR A "COMMON ALARM" SIGNAL. THE OUTPUT CONTACTS CHANGE POSITION WHEN A "COMMON ALARM" IS NOT PRESENT AND RESET WHEN A "COMMON ALARM" CONDITION IS PRESENT. THE "COMMON ALARM" SIGNAL CONDITIONS ARE SELECTABLE.

**ADDITIONAL "COMMON ALARM" AND "NOT IN AUTO" CONTACTS ARE AVAILABLE WHEN OPTIONAL ACCESSORY 18FX (RELAY EXPANSION MODULE) IS INCLUDED IN THE TRANSFER SWITCH ASSEMBLY. OUTPUT CONTACTS "OP2 AND/OR" "OP3" WILL PROVIDE SIGNAL FUNCTIONS WHEN THE FEATURE SETTING OF EACH IS SET TO OPERATE AS "COMMON ALARM" OR "NOT IN AUTO".**

CONTACTS ARE RATED 5 AMPS RESISTIVE AT 30 VDC MAXIMUM, 100 mA AT 5 VDC MINIMUM

REFER TO USER'S GUIDE, ASCO GROUP G CONTROLLER FOR AUTOMATIC & NON-AUTOMATIC TRANSFER SWITCHES, PART NUMBER 381333-400 FOR SETTING INFORMATION.

### **EXTERNAL POWER SUPPLY COMPATIBILITY**

USE OF AN EXTERNAL POWER SUPPLY IS USEFUL WHEN REQUIRED TO EXTEND THE FOLLOWING CONTROLLER TIME DELAYS BEYOND 6 SECONDS;

FEATURE 1C - OVERRIDE MOMENTARY NORMAL SOURCE OUTAGES  
FEATURE 1F - OVERRIDE MOMENTARY EMERGENCY SOURCE OUTAGES

AN EXTERNAL POWER SUPPLY IS ALSO USEFUL WHEN THE TRANSFER SWITCH IS USED WITH COMMUNICATIONS FEATURES BY ENABLING THE CONTROLLER TO CONTINUE COMMUNICATING

AN EXTERNAL POWER SOURCE MAY BE PROVIDED TO THE UNIT IF AN EMERGENCY SOURCE IS AVAILABLE, BY USE OF:

- AN EXTERNAL 24 VDC POWER SUPPLY WITH ACCESSORY 1BRX (RELAY EXPANSION MODULE)
- OPTIONAL ACCESSORY 1UP (UNINTERRUPTIBLE POWER SUPPLY MODULE)

**ER SUPPLY \*1G\***

**EXTERNAL 24 VDC POWER SUPPLY \*1G\*:**

AN EXTERNAL 24 VDC POWER SUPPLY MAY BE USED TO POWER THE CONTROLLER WHEN ACCESSORY 18RX (RELAY EXPANSION MODULE) IS INCLUDED IN THE TRANSFER SWITCH ASSEMBLY. OUTPUT CONTACTS "OP2" WILL PROVIDE EXTERNAL 24 VDC POWER SUPPLY FUNCTIONALITY WHEN ITS FEATURE SETTING IS SET TO OPERATE AS "G". ADDITIONALLY, JUMPERS MUST BE RECONFIGURED ON ACCESSORY 18RX (RELAY EXPANSION MODULE) TO ENABLE THIS FUNCTION AS FOLLOWS:

**REMOVE JUMPERS "J1" 1-2 & "J1" 3-4**  
**CONNECT JUMPERS "J1" 5-7 & "J1" 6-8**

THE OUTPUT CONTACTS CHANGE POSITION WHEN EITHER THE NORMAL SOURCE OR EMERGENCY SOURCE IS AVAILABLE AND RESET WHEN NEITHER SOURCE IS AVAILABLE. THE "OP2" NC CONTACT SWITCHES CUSTOMER PROVIDED +24 VDC FROM THE EXTERNAL POWER SUPPLY TO THE CONTROLLER.

REFER TO USER'S GUIDE, ASCO GROUP G CONTROLLER FOR AUTOMATIC & NON-AUTOMATIC TRANSFER SWITCHES, PART NUMBER 381333-400 FOR SETTING INFORMATION.

**ACCESSORY 1UP (UNINTERRUPTIBLE POWER SUPPLY):**  
WHEN OPTIONAL ACCESSORY 1UP IS INCLUDED IN THE TRANSFER SWITCH ASSEMBLY, THE CONTROLLER IS PROVIDED WITH LIMITED RESERVE POWER (APPROXIMATELY 3 MINUTES).

### LOAD CURRENT METERING

WHEN OPTIONAL ACCESSORY 23GB IS PART OF THE TRANSFER SWITCH ASSEMBLY, THREE PHASE CURRENT MEASUREMENTS ARE AVAILABLE FOR DISPLAY ON THE GROUP G CONTROLLER.

REFER TO USER'S GUIDE, ASCO GROUP G CONTROLLER FOR AUTOMATIC & NON-AUTOMATIC TRANSFER SWITCHES, PART NUMBER 381333-400 FOR INFORMATION ON USE.

### **ADVANCED-FUNCTION SOFTWARE BUNDLE**

**WHEN OPTIONAL ACCESSORY 11BE IS PART OF THE TRANSFER SWITCH ASSEMBLY, AN ADVANCED-FUNCTION SOFTWARE BUNDLE IS AVAILABLE TO PERFORM THE FOLLOWING FUNCTIONS:**

- SERIAL COMMUNICATIONS (RS-485)
- PROGRAMMABLE ENGINE EXERCISER
- EVENT LOG
- COMMON ALARM SIGNAL CAPABILITY ON GROUP G CONTROLLER "OP1" OUTPUT.

### SOURCE AVAILABILITY SIGNALS

SIGNALS INDICATING THE AVAILABILITY OF THE NORMAL & EMERGENCY SOURCES IS PROVIDED WHEN OPTIONAL ACCESSORY 1BRX (RELAY EXPANSION MODULE) IS INCLUDED IN THE TRANSFER SWITCH ASSEMBLY. OUTPUT CONTACTS "RL5" (EMERGENCY SOURCE AVAILABLE) AND "RL6" (NORMAL SOURCE AVAILABLE) CHANGE POSITION WHEN THE SOURCE IS ACCEPTABLE.

CONTACTS ARE RATED 5 AMPS RESISTIVE AT 30 VDC MAXIMUM, 100 mA AT 5 VDC MINIMUM.

## NOTES

1. SWITCH SHOWS DE-ENERGIZED CONNECTED TO NORMAL SOURCE.
2. DEVICE SYMBOLS AND DESIGNATIONS ARE IN ACCORDANCE WITH NEMA PUB. ICS 1, PART 1-101A.
3. ALL WIRING IS #16 AWG, TINNED, STRANDED COPPER UNLESS OTHERWISE INDICATED.
4. INDICATES CUSTOMER CONNECTION POINTS.
5. INDICATES FACTORY CONNECTION POINTS.
6. CONNECTION POINTS THAT HAVE BOTH CUSTOMER CONNECTIONS AND FACTORY CONNECTIONS ARE INDICATED BY BOTH TYPES OF POINTS.
7. THE TRANSFER UNIT IS MOUNTED ON THE BACK INSIDE SURFACE OF THE ENCLOSURE. THE CONTROL PANEL AND ANY OPTIONAL ACCESSORIES ARE MOUNTED ON THE INSIDE OF THE ENCLOSURE DOOR.
8. AN OPERATOR'S MANUAL IS FURNISHED WITH EACH AUTOMATIC TRANSFER SWITCH. REFER TO THE OPERATOR'S MANUAL FOR INSTALLATION AND OPERATION OF THE SWITCH.
9. A BOND STRAP ON CONTROL PANEL IS AFFIXED TO CHASSIS (ENCLOSURE) AT LOWER LEFT CONTROL PANEL MOUNTING STUD.

### CATALOG NUMBER SUFFIXES

TS FRAME	CATALOG TYPE	NEUTRAL TYPE	PHASE POLES	AMPS	VOLT CODE	CONTROLLER	OPTIONAL ACCESSORY	ENCLOSURE CODE
J	3ATS 3NTS	A B	3	600	C D E F G H J K L M N P Q R	G	X	C F G H L M N P Q
							BLANK FOR NAME	BLANK FOR CORD TYPE

### EXPLANATION OF CATALOG NUMBER CODES

NEUTRAL TYPE		VOLTAGE CODES (PAGE 1 OF 4) (PAGE 2 OF 2)		ENCLOSURE CODES			
CODE	DESCRIPTION	CODE	NOMINAL VOLTAGE	CODE	TYPE	DESCRIPTION	
A	SOLID SWITCHING			BLANK	1	OPEN TYPE (NO ENCLOSURE)	
B				C		GENERAL PURPOSE, INDOOR	
		C	208				
		D	220	F	3R	OUTDOOR, RAINPROOF, SLEET & ICE RESISTANT	
		E	240	G		INDOOR/OUTDOOR, WATERTIGHT & DUSTTIGHT	
		F	240	H	4X	TYPE 4 PLUS CORROSION RESISTANCE (STAINLESS STEEL)	
		G	277	L	12	INDOOR, INDUSTRIAL ENVIRONMENTS, OILTIGHT & DUSTTIGHT	
		H	380				
		J	400			(SECURE ENCLOSURES)	
		K	415				
		L	440	M	3R	OUTDOOR, RAINPROOF, SLEET & ICE RESISTANT	
		M	480	N	4	INDOOR/OUTDOOR, WATERTIGHT & DUSTTIGHT	
		P	480	Q	4X	TYPE 4 PLUS CORROSION RESISTANCE (STAINLESS STEEL)	
		R	550V	Q	12	INDOOR, INDUSTRIAL ENVIRONMENTS, OILTIGHT & DUSTTIGHT	
		S	575V				
		Q	600V				

CATALOG NUMBER \_\_\_\_\_  
**ASCO** • CERTIFIED TO  
 S.O. \_\_\_\_\_

BY  
DATE \_\_\_\_\_

FORM REV G


PROJECT NAME:  
WIRING

**300 SERIES J3**  
"J" FRAME, GR

	BY	
DRAWN BY	SDH	
CHECKED		

CHECKED		
PROJECT APPROVAL		
FINAL	SDH	

<b>G</b> <b>F</b> <b>E</b> <b>D</b> <b>C</b> <b>B</b> <b>A</b>  <b>REV</b> TO:	278600	TR	EC	0003/19
	REE ECH			
	278511	TR	EC	1019/19
	REE ECH			
	280405	MCA	JPB	0402/17
	REE ECH			
	281510	AJ	MM	1017/14
	REE ECH			
	247770	ECN	ECN	414/14
	REE ECH			
248450	AE	BC	4019/14	
REE ECH				
242580	ECN	ECN	0000/13	
REE ECH				
242550	ECN	ECN	050/13	
==	REE ECH			
REV	ECN	BY	DATE	



THIRD ANGLE  
PROJECTION

**DIAGRAM**

**200 AMPS**

**CONTROLS**

MINIMUM TYPICAL FORMULATIONS TO BE IN  
ACCOMMODATING UNIT AND PROCESSES SP-4-64.  
SEE ASSOCIATED UNIT FOR USE INSTRUCTIONS.

ASCO® REG. NO.

PROPERTY OF ASCO POWER TECHNOLOGIES, INC. LIMITED BY OUR  
WARRANTY. ALL RIGHTS ARE RESERVED ON INVENTION AND PATENTS.

**ASCO®** ASCO® P gas TECHNOLOGIES, INC.  
FLORHAM PARK, NEW JERSEY 07631-3154, USA

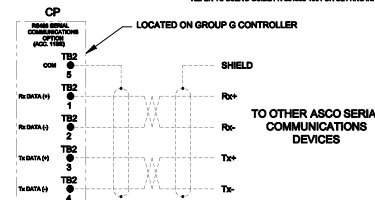
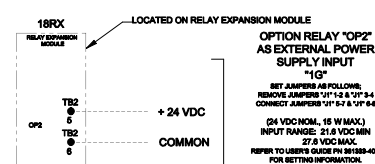
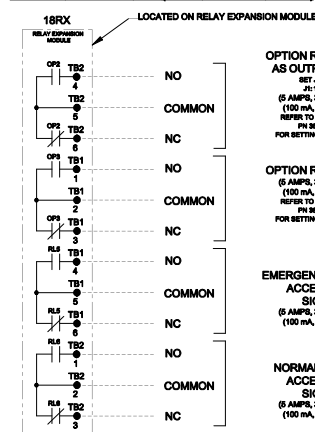
**COMPUTER GENERATED DRAWING**

SCALE: 1"=1' DATE: **DS**

**978745**

17 276550

T OF 6

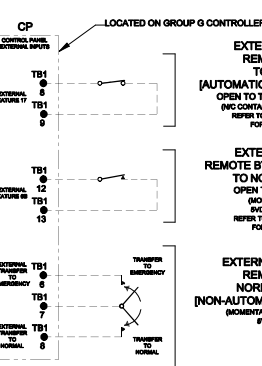
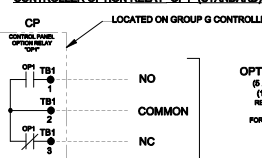
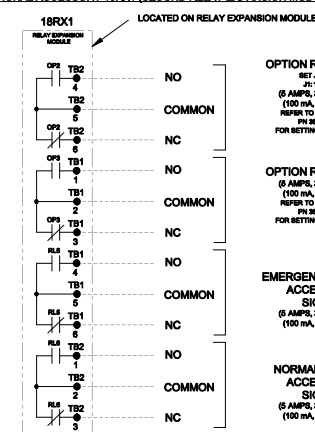


**NOTES:**

1. EARTH GROUND SHIELD AT HOST DEVICE ONLY.
2. FIELD WIRING: USE UL LISTED, STRANDED, TWISTED PAIRS, OVERALL FOIL SHIELD WITH STRANDED DRAIN WIRE SUITABLE FOR R8422 EQUIVALENT TO:

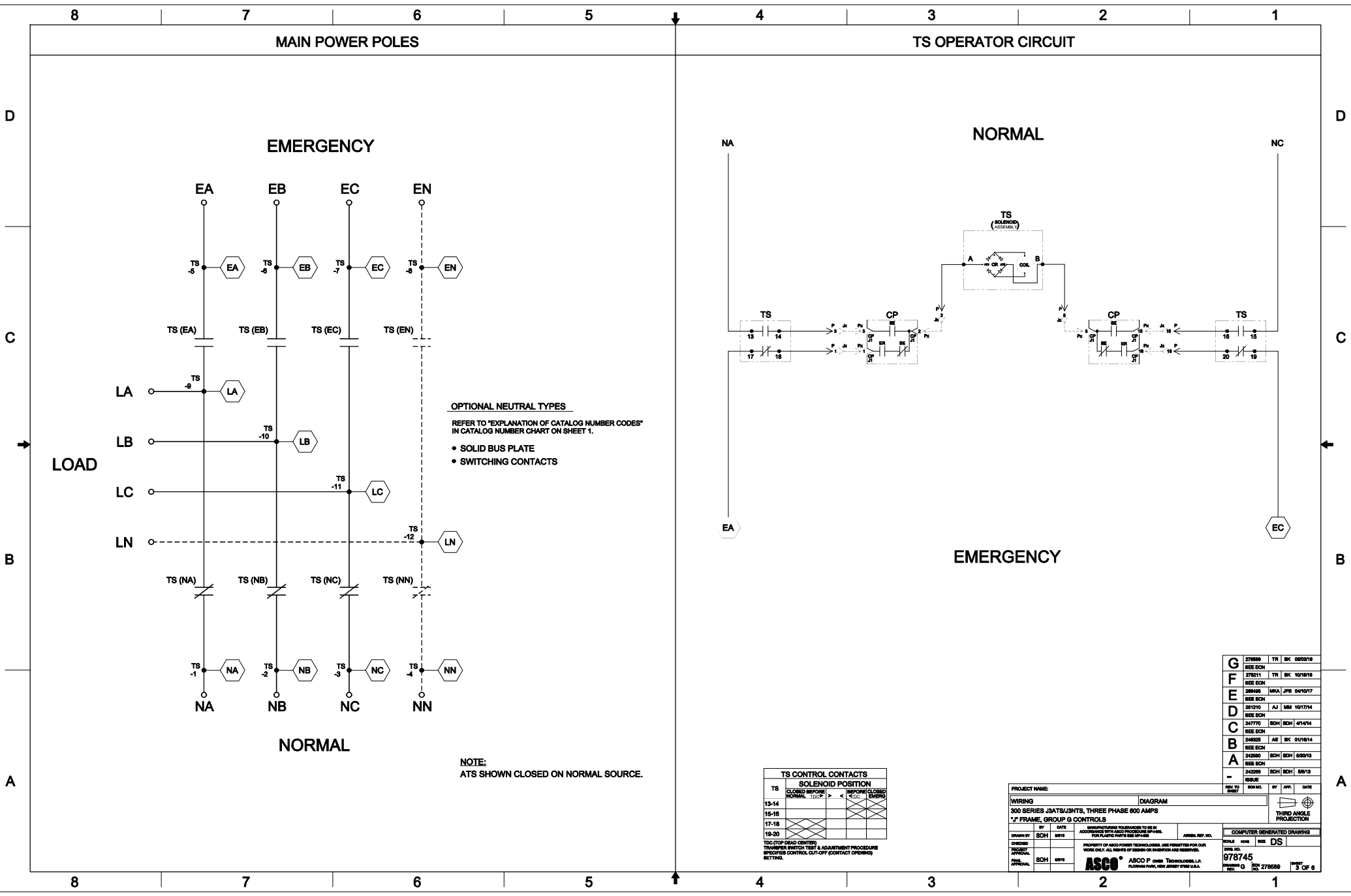
(STANDARD 80°C) BELDEN 8642 OR 9829  
OR ALPHA 8222C OR 8222C

(PLENUM RATED) BELDEN 89729 OR 82729  
OR ALPHA 8922



<b>G</b>	270509	TR	BK	05/03/19
	00EE EGN			
<b>F</b>	278211	TR	BK	10/18/18
	00EE EGN			
<b>E</b>	280405	MKA	JPS	04/10/17
	00EE EGN			
<b>D</b>	261210	AJ	MM	10/17/14
	00EE EGN			
<b>C</b>	247770	SDH	SDH	4/14/14
	00EE EGN			
<b>B</b>	248325	AE	BK	01/18/14
	00EE EGN			
<b>A</b>	242590	SDH	SDH	5/30/13
	00EE EGN			
<b>-</b>	242255	SDH	SDH	5/8/13
	0000E			

[illegible]



D

C

B

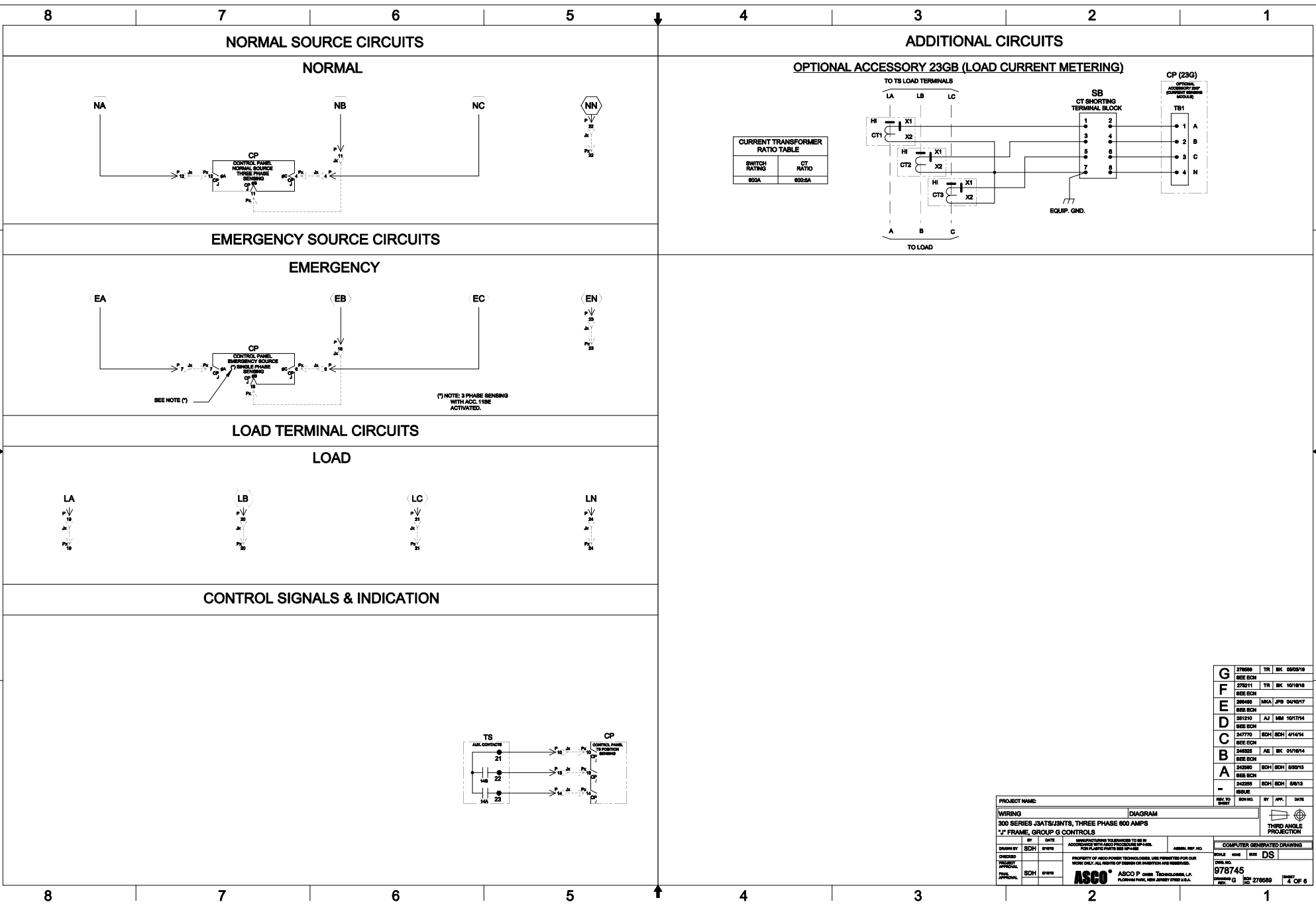
A

D

C

B

A

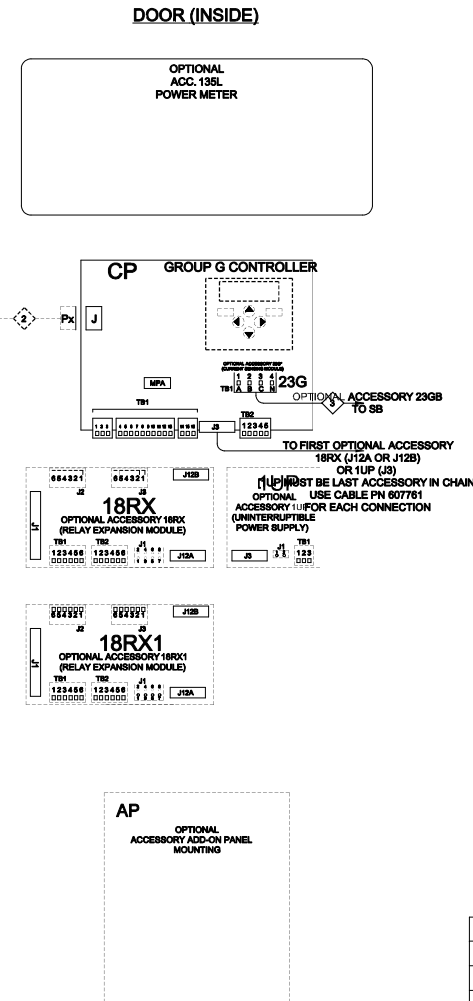
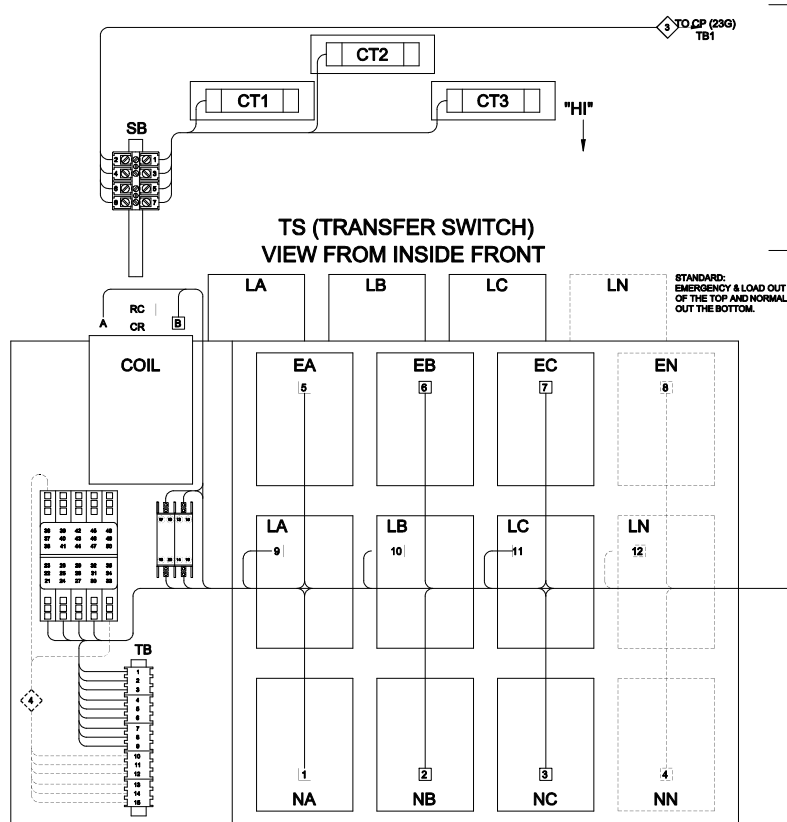


PROJECT NAME:		WIRING		DIAGRAM	
300 SERIES J3ATS/J3NTS, THREE PHASE 800 AMPS					
"J" FRAME, GROUP G CONTROLS					
DESIGNED BY	SDH	DATE	5/17/18	MANUFACTURING TOLERANCES TO BE IN ACCORDANCE WITH ASCO TECHNOLOGIES, L.P. FOR PLASTIC PARTS SEE 304-008	
CHECKED BY	SDH	DATE	5/17/18	PROPERTY OF ASCO POWER TECHNOLOGIES, L.P. THIS DRAWING IS LOANED TO YOU BY ASCO. IT IS NOT TO BE REPRODUCED OR TRANSMITTED IN ANY FORM OR BY ANY MEANS, ELECTRONIC OR MECHANICAL, INCLUDING PHOTOCOPYING, RECORDING, OR BY ANY INFORMATION STORAGE AND RETRIEVAL SYSTEM.	
APPROVED BY	SDH	DATE	5/17/18	ASCO P. OVER TECHNOLOGIES, L.P. ALPHARETTA PARK, NEW JERSEY 07033-5000	
COMPUTER GENERATED DRAWING				SCALE: 1/8" = 1"	
DRAWING NO. 978745				REV. 1	
ISSUED BY G				REV. 1	
DATE 5/17/18				PAGE 4 OF 6	

**REVISIONS**

REV.	DESCRIPTION	DATE
G	276085 TR BK 05/05/18	
F	276211 TR BK 10/18/18	
E	286405 MKA JPB 04/10/17	
D	281210 AJ MM 10/17/14	
C	247770 SDH SDH 4/14/14	
B	246225 AE BK 04/18/14	
A	243580 SDH SDH 5/20/13	
	243585 SDH SDH 5/20/13	

# PHYSICAL DIAGRAM



G	276000	TR	05/05/18
F	276211	TR	05/18/18
E	266400	MPA	04/10/17
D	261210	AJ	04/10/17
C	247770	SDH	04/14/14
B	246020	AE	04/10/14
A	243580	SDH	05/03/13
	243580	SDH	05/03/13
	243580	SDH	05/03/13

PROJECT NAME:		DIAGRAM	
300 SERIES J3ATS/J3NTS, THREE PHASE 600 AMPS			
"J" FRAME, GROUP G CONTROLS			
BY	DATE	REVISIONS TO BE MADE BY	REVISIONS TO BE MADE BY
SDH	05/18/18	FOR PLASTIC PARTS SEE 04/10/17	FOR PLASTIC PARTS SEE 04/10/17
CHECKED	DATE	PROPERTY OF ASCO POWER TECHNOLOGIES, LLC. THIS DRAWING IS THE PROPERTY OF ASCO POWER TECHNOLOGIES, LLC. NO PART OF THIS DRAWING IS TO BE REPRODUCED OR TRANSMITTED IN ANY FORM OR BY ANY MEANS, ELECTRONIC OR MECHANICAL, INCLUDING PHOTOCOPYING, RECORDING, OR BY ANY INFORMATION STORAGE AND RETRIEVAL SYSTEM, WITHOUT THE WRITTEN PERMISSION OF ASCO POWER TECHNOLOGIES, LLC.	COMPUTER GENERATED DRAWING
APPROVED	DATE	SCALE	SIZE
SDH	05/18/18	1/8" = 1'-0"	DS
ASCO P. OVER TECHNOLOGIES, L.P.		978745	
FLORHAM PARK, NEW JERSEY 07831-0001		REV. 5 OF 6	

