

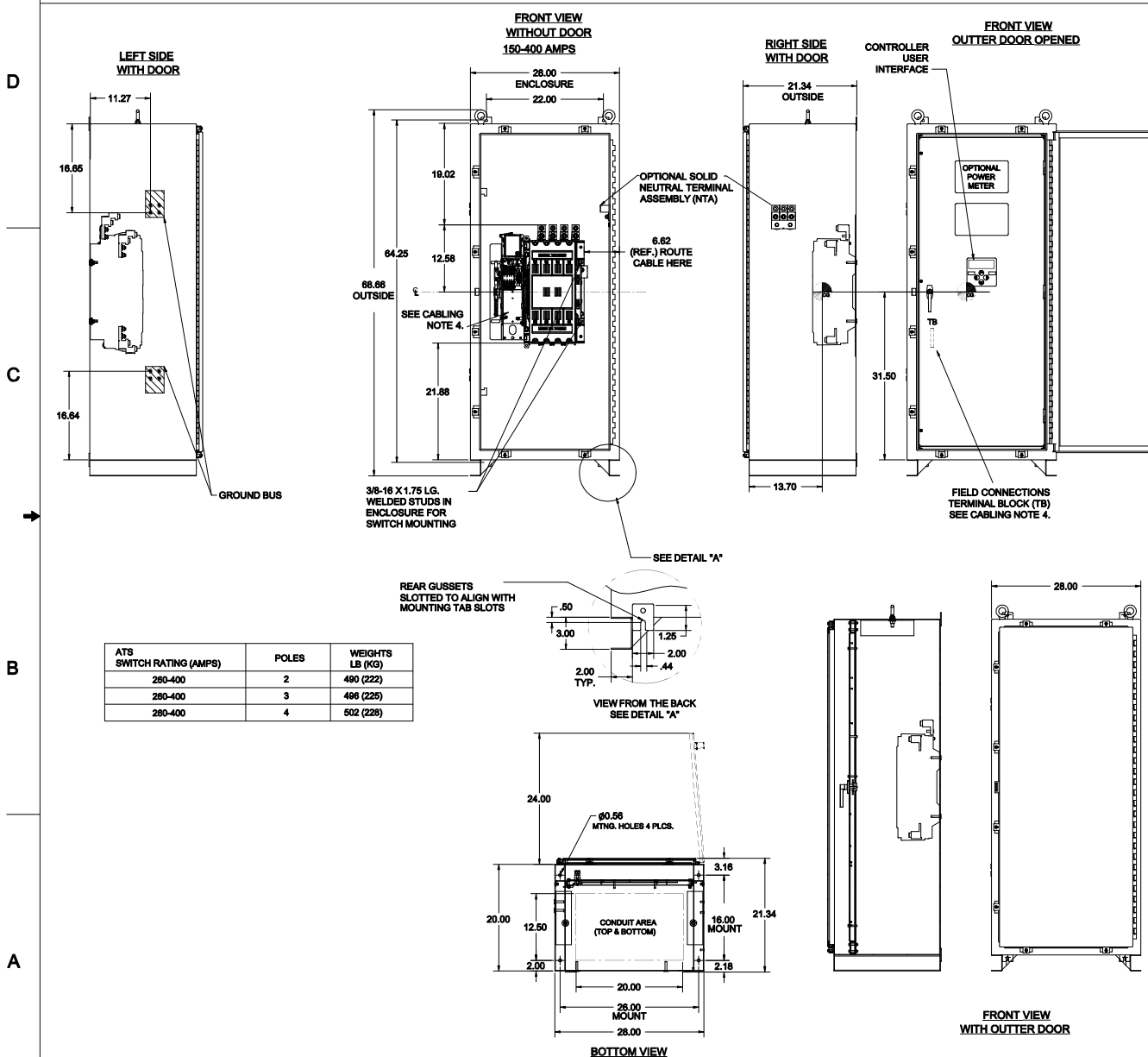
ATS Submittal

Transfer Switch Details

#3	ATS	AMPS: 0260	QTY: 3
Product	: Series 300	Catalog Number	: J03ATSB30260CGXM
Service Voltage / Hz	: 208V/60Hz	Optional Accessories	: 11BE,44G
Bypass Isolation	: Not Applicable	Product Description	: 300 Series, Automatic Open Transition Transfer Switch
No. of Switched Poles: 4	: 4	Neutral Configuration	: Switched [B]
Withstand Rating:	: See WCR Table Below	No. of Cables & Lug Size	: 1, #4 AWG to 600 MCM or (2) 1/0 AWG to 250 MCM
Frame = J, Switch Rating = 0260, Series = 300			
Enclosure	: 3R(M)-UL Type 3R secure double door enclosure (See Disclaimer 3)	Service	: Three Phase, 4-wire
Extended Warranty	: Not Included	Markings	:

#	ACCESSORY DESCRIPTIONS	
	Accessory Code	Description
1	11BE	Adds the following features to the Group G controller: (1) Serial RS-485 Modbus Communications (2) Multi-Schedule Engine Exerciser (3) a 300 Entry Event Log and (4) a common alarm output function. When applied on 3-phase systems it also enables: (1) 3-Phase Emergency Source VLL sensing (2) Phase Rotation Monitoring (3) Emergency Source VLL Unbalance Monitoring.
2	44G	Strip heater w/ thermostat, wired to load terminals: 208-600 volts

OUTLINE FOR **ASCO** SERIES 260-400 AMPERE "J" FRAME (3ATS,3NTS) FRONT CONNECTED TRANSFER SWITCHES TYPE 3R/4/4X/12 SECURE ENCLOSURE



GENERAL NOTES

- TYPE 3R/4X/12 ENCLOSURE. FREE STANDING. FLOOR OR WALL MOUNTABLE. 14 GAUGE CONSTRUCTION.
- DOOR HINGED ON RIGHT SIDE. LOCKABLE HASP ON LEFT SIDE. DOOR CLAMPS LEFT, TOP, AND BOTTOM.
- FINISH: TYPE 3R/4/12: ANSI #1 GRAY POLYESTER SEMI GLOSS ELECTROSTATIC POWDER.
TYPE 4X (V): EXTERIOR CONSTRUCTED OF CODE GAUGE TYPE 304 STAINLESS STEEL.
TYPE 4X (V): EXTERIOR CONSTRUCTED OF CODE GAUGE TYPE 316 STAINLESS STEEL.
OTHER ANSI COLORS AVAILABLE CONSULT FACTORY UL RECOGNIZED.
- RECOMMENDED CLEARANCES:
FRONT: 24 INCHES
A. 20 % RATED GROUND BUS IS PROVIDED.
B. UNIT IS DESIGNED FOR COMBINATION TOP AND BOTTOM CABLE ENTRY. THE STANDARD SWITCH CONFIGURATION IS FOR TOP LUGS EMERGENCY AND LOAD AND BOTTOM LUGS NORMAL.
7. A FULL RATED NEUTRAL CONNECTION FOR EACH SOURCE AND THE LOAD IS OPTIONAL. WHEN PROVIDED IT IS IN ONE OF THE FOLLOWING FORMATS AS SPECIFIED BY THE CATALOG NO. NEUTRAL TYPE:
A. SOLID (COPPER BUS) NEUTRAL
B. SWITCHED NEUTRAL POLE
C. CENTER OF GRAVITY.
- WHEN INSTALLING GROUND LUGS TO TYPE 4 ENCLOSURE, REMOVE HARDWARE FROM STUDS AND REMOVE MASKING PLATES TO EXPOSE UNPAINTED SURFACE.

CABLING NOTES

- ALL SIZES SUPPLIED STANDARD WITH MECHANICAL (SCREW TYPE) LUGS. (SEE AMP SIZE BELOW)
A. LUG MATERIAL: ALUMINUM ALLOY 6061-T6 WITH ELECTRO TIN PLATED FINISH.
B. SCREW MATERIAL: ALUMINUM ALLOY 6062-T6 WITH ELECTRO TIN PLATED FINISH.
C. UL LISTED, CSA CERTIFIED.
D. LUG SCREW TIGHTENING TORQUE PER UL 489B: 19 FT.-LBS.
E. SUITABLE WIRE BENDING SPACE IS PROVIDED. (SEE AMP SIZE BELOW)
- CONSULT FACTORY FOR OTHER TERMINATION REQUIREMENTS.
- GROUND LUGS ARE PROVIDED STANDARD AS FOLLOWS. (SEE AMP SIZE BELOW)
- CUSTOMER TERMINAL BLOCKS:
THE TB WILL BE MOUNTED ON THE TRANSFER SWITCH FRAME AS INDICATED

NOTES 260-400 AMP SWITCHES

- SUPPLIED WITH STANDARD MECHANICAL (SCREW TYPE) LUGS ON THE NORMAL, EMERGENCY & LOAD BUS STUBS. ONE (1) LUG PER PHASE AND NEUTRAL EACH SUITABLE FOR CONNECTION OF TWO (2) 1/0 -250MCM CU/AL CABLES OR ONE (1) #4 -800MCM CU/AL CABLE.
A. SUITABLE WIRE BENDING SPACE IS PROVIDED FOR UP TO ONE (1) 800MCM CABLE PER TERMINAL PER NEC.
- GROUND LUGS ARE PROVIDED STANDARD AS FOLLOWS:
SIX (6) 1/0 -250MCM CU/AL CABLES OR THREE (3) #4 -800MCM CU/AL CABLE CONNECTIONS.

PROJECT NAME:		300 SERIES TS "J"		OUTLINE	
COMPOSITE		260-400 AMP 3R/4X/12 SECURED		THIRD ANGLE PROJECTION	
BY	DATE	APPROVED	DATE	SCALE	SIZE
SK	08/17/17	SK	08/17/17	1:1	DS
CHECKED		APPROVED		COMPUTER GENERATED DRAWING	
SK		SK		DWG. NO. 1001393-022	
REV		REV		SHEET 1 OF 1	

ASCO P. OVER TECHNOLOGIES, L.P.
FLORHAM PARK, NEW JERSEY 07932 U.S.A.

THREE PHASE WIRING FOR ASCO 300 SERIES TRANSFER SWITCHES (J3ATS/J3NTS) 260 & 400 AMPERES WITH GROUP G CONTROLS

GENERAL INFORMATION

COMMON ALARM & NOT IN AUTO SIGNALING FEATURES

A SET OF FORM C CONTACTS IS PROVIDED ON THE GROUP G CONTROLLER AS "OP1". THE FEATURE SETTING OF "OP1" CAN BE SET TO OPERATE THE CONTACTS AS A "NOT IN AUTO" SIGNAL.

WHEN "OP1" IS SET FOR "NOT IN AUTO", THE OUTPUT CONTACTS CHANGE POSITION WHEN THE TRANSFER IS BEING INHIBITED FROM TRANSFERRING TO THE EMERGENCY SOURCE (FEATURE 34B) OR THE TRANSFER SWITCH HAS BEEN SET FOR NON-AUTOMATIC (MANUAL) OPERATION.

WHEN OPTIONAL ACCESSORY 11B ("SOFTWARE BUNDLE") IS PART OF THE TRANSFER SWITCH ASSEMBLY, "OP1" MAY ALTERNATIVELY SET FOR A "COMMON ALARM" SIGNAL. THE OUTPUT CONTACTS CHANGE POSITION WHEN A "COMMON ALARM" IS NOT PRESENT AND RESET WHEN A "COMMON ALARM" CONDITION IS PRESENT. THE "COMMON ALARM" SIGNAL CONDITIONS ARE SELECTABLE.

ADDITIONAL "COMMON ALARM" AND "NOT IN AUTO" CONTACTS ARE AVAILABLE WHEN OPTIONAL ACCESSORY 18RX (RELAY EXPANSION MODULE) IS INCLUDED IN THE TRANSFER SWITCH ASSEMBLY. OUTPUT CONTACTS "OP2 AND/OR "OP3" WILL PROVIDE SIGNAL FUNCTIONS WHEN THE FEATURE SETTING OF EACH IS SET TO OPERATE AS "COMMON ALARM" OR "NOT IN AUTO".

CONTACTS ARE RATED 5 AMPS RESISTIVE AT 30 VDC MAXIMUM, 100 mA AT 5 VDC MINIMUM.

REFER TO USER'S GUIDE, ASCO GROUP G CONTROLLER FOR AUTOMATIC & NON-AUTOMATIC TRANSFER SWITCHES, PART NUMBER 361333-400 FOR SETTING INFORMATION.

EXTERNAL POWER SUPPLY COMPATIBILITY

USE OF AN EXTERNAL POWER SUPPLY IS USEFUL WHEN REQUIRED TO EXTEND THE FOLLOWING CONTROLLER TIME DELAYS BEYOND 6 SECONDS:

FEATURE 1C - OVERRIDE MOMENTARY NORMAL SOURCE OUTAGES
FEATURE 1F - OVERRIDE MOMENTARY EMERGENCY SOURCE OUTAGES

AN EXTERNAL POWER SUPPLY IS ALSO USEFUL WHEN THE TRANSFER SWITCH IS USED WITH COMMUNICATIONS FEATURES BY ENABLING THE CONTROLLER TO CONTINUE COMMUNICATING.

AN EXTERNAL POWER SOURCE MAY BE PROVIDED TO THE CONTROLLER, UNTIL THE NORMAL SOURCE OR EMERGENCY SOURCE IS AVAILABLE, BY USE OF:

- AN EXTERNAL 24 VDC POWER SUPPLY WITH ACCESSORY 18RX (RELAY EXPANSION MODULE) OR
- OPTIONAL ACCESSORY 1UP (UNINTERRUPTIBLE POWER SUPPLY MODULE)

EXTERNAL 24 VDC POWER SUPPLY "1UP"

AN EXTERNAL 24 VDC POWER SUPPLY MAY BE USED TO POWER THE CONTROLLER WHEN ACCESSORY 18RX (RELAY EXPANSION MODULE) IS INCLUDED IN THE TRANSFER SWITCH ASSEMBLY. OUTPUT CONTACTS "OP2" WILL PROVIDE EXTERNAL 24 VDC POWER SUPPLY FUNCTIONALITY WHEN ITS FEATURE SETTING IS SET TO OPERATE AS "1C". ADDITIONALLY, JUMPERS MUST BE RECONFIGURED ON ACCESSORY 18RX (RELAY EXPANSION MODULE) TO ENABLE THIS FUNCTION AS FOLLOWS:

REMOVE JUMPERS "J1" 1-2 & "J1" 3-4
CONNECT JUMPERS "J1" 5-7 & "J1" 6-8

THE OUTPUT CONTACTS CHANGE POSITION WHEN EITHER THE NORMAL SOURCE OR EMERGENCY SOURCE IS AVAILABLE AND RESET WHEN NEITHER SOURCE IS AVAILABLE. THE "OP2" NC CONTACT SWITCHES CUSTOMER PROVIDED <24 VDC FROM THE EXTERNAL POWER SUPPLY TO THE CONTROLLER.

REFER TO USER'S GUIDE, ASCO GROUP G CONTROLLER FOR AUTOMATIC & NON-AUTOMATIC TRANSFER SWITCHES, PART NUMBER 361333-400 FOR SETTING INFORMATION.

ACCESSORY 1UP (UNINTERRUPTIBLE POWER SUPPLY)
WHEN OPTIONAL ACCESSORY 1UP IS INCLUDED IN THE TRANSFER SWITCH ASSEMBLY, THE CONTROLLER IS PROVIDED WITH LIMITED RESERVE POWER (APPROXIMATELY 3 MINUTES).

LOAD CURRENT METERING

WHEN OPTIONAL ACCESSORY 23GB IS PART OF THE TRANSFER SWITCH ASSEMBLY, THREE PHASE CURRENT MEASUREMENTS ARE AVAILABLE FOR DISPLAY ON THE GROUP G CONTROLLER.

REFER TO USER'S GUIDE, ASCO GROUP G CONTROLLER FOR AUTOMATIC & NON-AUTOMATIC TRANSFER SWITCHES, PART NUMBER 361333-400 FOR INFORMATION ON USE.

ADVANCED-FUNCTION SOFTWARE BUNDLE

WHEN OPTIONAL ACCESSORY 11B IS PART OF THE TRANSFER SWITCH ASSEMBLY, AN ADVANCED-FUNCTION SOFTWARE BUNDLE IS AVAILABLE TO PERFORM THE FOLLOWING FUNCTIONS:

- SERIAL COMMUNICATIONS (RS-485)
- PROGRAMMABLE ENGINE EXERCISER
- EVENT LOG
- COMMON ALARM SIGNAL CAPABILITY ON GROUP G CONTROLLER "OP1" OUTPUT.

(3 PHASE SENSING ONLY)
- 3 PHASE EMERGENCY SOURCE SENSING.
- PHASE ROTATION SENSING.
- EMERGENCY VOLTAGE UNBALANCE SENSING.

REFER TO USER'S GUIDE, ASCO GROUP G CONTROLLER FOR AUTOMATIC & NON-AUTOMATIC TRANSFER SWITCHES, PART NUMBER 361333-400 FOR INFORMATION ON THESE FUNCTIONS.

NON-AUTOMATIC (MANUAL) OPERATION

TRANSFER SWITCH ASSEMBLY FACTORY SET FOR NON-AUTOMATIC OPERATION PROVIDE USER INITIATED, ELECTRICAL OPERATION OF THE TRANSFER SWITCH TO EITHER AVAILABLE SOURCE. THE TRANSFER SWITCH ASSEMBLY IS PHYSICALLY IDENTICAL TO THAT OF THE AUTOMATIC TYPE.

WHEN THE TRANSFER SWITCH IS SET FOR NON-AUTOMATIC OPERATION, A CUSTOMER PROVIDED SELECTOR SWITCH MAY BE USED TO OPERATE IT FROM A REMOTE LOCATION.

REMOTE CONTROL FEATURES

THE FOLLOWING CONTROL PANEL INPUTS PROVIDE REMOTE CONTROL FUNCTIONS FOR THE TRANSFER SWITCH. EACH FUNCTION CAN BE IMPLEMENTED BY THE CUSTOMER PROVIDING THE FORM OF CONTROL DESCRIBED. EACH CONTROL CONTACT MUST BE SUITABLE FOR A 5 VDC LOW ENERGY CIRCUIT.

EXTERNAL FEATURE 17: REMOTE TRANSFER TO EMERGENCY FEATURE (FOR AUTOMATIC TRANSFER TYPE ONLY) - REQUIRES A CUSTOMER SUPPLIED, NORMALLY CLOSED CONTACT. OPENING OF THE CONTACT CAUSES ENGINE START AND TRANSFER TO THE EMERGENCY SOURCE. RE-CLOSURE OF THE CONTACT ACTIVATES THE FEATURE 3A "RETRANSFER TO NORMAL (IF JUST TEST)" TIME DELAY PRIOR TO RETRANSFER. IN THE EVENT THAT THE EMERGENCY SOURCE FAILS WHILE THE TRANSFER SWITCH IS CONNECTED TO EMERGENCY AND THE CUSTOMER SUPPLIED CONTACT IS OPEN, THE TRANSFER SWITCH WILL AUTOMATICALLY RETRANSFER TO THE NORMAL SOURCE.

EXTERNAL FEATURE 6B: REMOTE BYPASS OF RETRANSFER TO NORMAL TIME DELAY - REQUIRES A CUSTOMER SUPPLIED, NORMALLY CLOSED CONTACT. OPENING OF THE CONTACT BYPASSES FEATURE 3A RETRANSFER TO NORMAL DELAY IF ACTIVE.

REFER TO USER'S GUIDE, ASCO GROUP G CONTROLLER FOR AUTOMATIC & NON-AUTOMATIC TRANSFER SWITCHES, PART NUMBER 361333-400 FOR SETTING INFORMATION.

ENGINE CONTROL CONTACTS

FEATURE 7 & FEATURE 8:
ONE SET OF FORM C CONTACTS "NR1" (FEAT. 7 NC, FEAT. 8 NO) THAT CHANGE POSITION ON EXPIRATION OF THE FEATURE 1C, OVERRIDE MOMENTARY NORMAL SOURCE OUTAGES TIME DELAY, AND RESET ON EXPIRATION OF THE FEATURE 2E ENGINE COOLDOWN TIME DELAY.
AN AUXILIARY CONTACT THAT IS CLOSED WHEN THE TRANSFER SWITCH IS CONNECTED TO THE EMERGENCY SOURCE, IS CONNECTED ACROSS THE NC CONTACT (FEATURE 7).

AN ADDITIONAL SET OF ENGINE STARTING CONTACTS ARE AVAILABLE ON THE GROUP G CONTROLLER WHEN THE FEATURE SETTING OF THE CONTROLLER OUTPUT CONTACTS "OP1" IS SET TO OPERATE AS "NR2".

ADDITIONAL, OPTIONAL ENGINE STARTING CONTACTS "NR2" ARE AVAILABLE WHEN OPTIONAL ACCESSORY 18RX (RELAY EXPANSION MODULE) IS INCLUDED IN THE TRANSFER SWITCH ASSEMBLY. OUTPUT CONTACTS "OP2" AND/OR "OP3" PROVIDE THE ENGINE STARTING FUNCTION WHEN THE FEATURE SETTING OF EACH IS SET TO OPERATE AS "NR2".

CONTACTS ARE RATED 5 AMPS RESISTIVE AT 30 VDC MAXIMUM, 100 mA AT 5 VDC MINIMUM.

REFER TO USER'S GUIDE, ASCO GROUP G CONTROLLER FOR AUTOMATIC & NON-AUTOMATIC TRANSFER SWITCHES, PART NUMBER 361333-400 FOR SETTING INFORMATION.

LOAD DISCONNECT FEATURE

FEATURE 31: INCLUDES SUB-FEATURES 31F, 31G, 31M, 31N
A SET OF FORM C CONTACTS ARE PROVIDED ON THE GROUP G CONTROLLER AS "OP1". WHEN THE FEATURE SETTING OF "OP1" IS SET TO OPERATE THE CONTACTS AS "FEATURE 31", THE TIME DELAY SETTINGS OF THE SUB-FEATURES ARE AVAILABLE.

"OP1" CAN BE SET TO OPERATE TO PROVIDE THE FOLLOWING FUNCTIONS USING THE TIME DELAY SETTINGS ASSOCIATED WITH EACH SUB-FEATURE:

- 31F - NORMAL TO EMERGENCY PRE-TRANSFER SIGNAL
- 31G - EMERGENCY TO NORMAL PRE-TRANSFER SIGNAL
- 31M - NORMAL TO EMERGENCY POST-TRANSFER SIGNAL
- 31N - EMERGENCY TO NORMAL POST-TRANSFER SIGNAL

THE "OP1" OUTPUT CONTACTS CHANGE POSITION FOLLOWING EACH OF THE ABOVE TIME DELAYS.

ADDITIONAL LOAD DISCONNECT CONTACTS "FEATURE 31" ARE AVAILABLE WHEN OPTIONAL ACCESSORY 18RX (RELAY EXPANSION MODULE) IS INCLUDED IN THE TRANSFER SWITCH ASSEMBLY. OUTPUT CONTACTS "OP2 AND/OR "OP3" WILL PROVIDE LOAD DISCONNECT FUNCTIONS WHEN THE FEATURE SETTING OF EACH IS SET TO OPERATE AS "FEATURE 31".

ALL OUTPUT CONTACTS "OP1", "OP2", "OP3" SET TO OPERATE AS "FEATURE 31", SHARE THE COMMON TIME DELAY SETTINGS OF SUB-FEATURES 31F, 31G, 31M, AND 31N.

CONTACTS ARE RATED 5 AMPS RESISTIVE AT 30 VDC MAXIMUM, 100 mA AT 5 VDC MINIMUM.

REFER TO USER'S GUIDE, ASCO GROUP G CONTROLLER FOR AUTOMATIC & NON-AUTOMATIC TRANSFER SWITCHES, PART NUMBER 361333-400 FOR SETTING INFORMATION.

INPHASE TRANSFER FEATURE FOR LOAD TRANSFER

INPHASE TRANSFER CONTROL INITIATES AN INPHASE TRANSFER OF LOADS BETWEEN LIVE SOURCES. THIS IS USED TO PREVENT HUBBANCE TRIPPING OF DISTRIBUTION CIRCUIT BREAKERS AND POSSIBLE DAMAGE TO MECHANICAL LOADS ASSOCIATED WITH OUT OF PHASE TRANSFER.

REFER TO USER'S GUIDE, ASCO GROUP G CONTROLLER FOR AUTOMATIC & NON-AUTOMATIC TRANSFER SWITCHES, PART NUMBER 361333-400 FOR SETTING INFORMATION.

SOURCE AVAILABILITY SIGNALS

SIGNALS INDICATING THE AVAILABILITY OF THE NORMAL & EMERGENCY SOURCES IS PROVIDED WHEN OPTIONAL ACCESSORY 18RX (RELAY EXPANSION MODULE) IS INCLUDED IN THE TRANSFER SWITCH ASSEMBLY. OUTPUT CONTACTS "TR1" (EMERGENCY SOURCE AVAILABLE) AND "TR2" (NORMAL SOURCE AVAILABLE) CHANGE POSITION WHEN THE SOURCE IS ACCEPTABLE.

CONTACTS ARE RATED 5 AMPS RESISTIVE AT 30 VDC MAXIMUM, 100 mA AT 5 VDC MINIMUM.

NOTES

1. SWITCH SHOWN DE-ENERGIZED CONNECTED TO NORMAL SOURCE.
2. DEVICE SYMBOLS AND DESIGNATIONS ARE IN ACCORDANCE WITH NEMA PUB. ICS 1, PART 1-101A.
3. ALL WIRING IS #16 AWG, TINNED, STRANDED COPPER UNLESS OTHERWISE INDICATED.
4. INDICATES CUSTOMER CONNECTION POINTS.
5. INDICATES FACTORY CONNECTION POINTS.
6. CONNECTION POINTS THAT HAVE BOTH CUSTOMER CONNECTIONS AND FACTORY CONNECTIONS ARE SHOWN OPEN AS CUSTOMER CONNECTION POINTS.
7. THE TRANSFER UNIT IS MOUNTED ON THE BACK INSIDE SURFACE OF THE ENCLOSURE. THE CONTROL PANEL AND ANY OPTIONAL ACCESSORIES ARE MOUNTED ON THE INSIDE SURFACE OF THE DOOR.
8. AN OPERATOR'S MANUAL IS FURNISHED WITH EACH AUTOMATIC TRANSFER SWITCH. REFER TO THIS PUBLICATION PRIOR TO INSTALLATION AND OPERATION OF THE SWITCH.
9. GROUND STRAP ON CONTROL PANEL IS AFFIXED TO CHASSIS (ENCLOSURE) AT LOWER LEFT CONTROL PANEL MOUNTING STUD.

CATALOG NUMBER SUFFIXES

TS	CATALOG	NEUTRAL	PHASE	AMPS	VOLT	CODE	CONTROLLER	OPTIONAL	ENCLOSURE
FRAME	TYPE	TYPE	POLES			CODE		ACCESSORY	CODE
						C D E F G H J K L M N P Q R			
J	SATS	A	3	260			G	X	
	3NTS	B		400					
									BLANK FOR NONE
									BLANK FOR OPEN TYPE

EXPLANATION OF CATALOG NUMBER CODES

NEUTRAL TYPE		VOLTAGE CODES 3 PHASE (3 OR 4 WIRE)		ENCLOSURE CODES	
CODE	DESCRIPTION	CODE	NOMINAL VOLTAGE	CODE	TYPE
A	SOLID SWITCHING			BLANK	C
B					1
		C	208		
		D	220	F	3R
		E	230	G	4
		F	240	H	4X
		G	277	L	12
		H	380		
		J	400		
		K	415		
		L	440	M	3R
		M	460	N	4
		N	480	P	4X
		P	500*	Q	12
		Q	575*		
		R	600*		

CATALOG NUMBER
CERTIFIED TO
ASCO S.O.

BY
DATE

FORM REV B

PROJECT NAME:

WIRING DIAGRAM
300 SERIES J3ATS/J3NTS, THREE PHASE 260 & 400 AMPS

"J" FRAME, GROUP G CONTROLS

BY DATE MANUFACTURING TO BE IN ACCORDANCE WITH ASCO PRODUCTION STANDARDS FOR PLANT AND FIELD USE

APPROVAL: JPB DATE

APPROVAL: JPB DATE

APPROVAL: JPB DATE

APPROVAL: JPB DATE

APPROVAL: JPB DATE

APPROVAL: JPB DATE

APPROVAL: JPB DATE

APPROVAL: JPB DATE

APPROVAL: JPB DATE

APPROVAL: JPB DATE

APPROVAL: JPB DATE

APPROVAL: JPB DATE

APPROVAL: JPB DATE

APPROVAL: JPB DATE

APPROVAL: JPB DATE

APPROVAL: JPB DATE

APPROVAL: JPB DATE

APPROVAL: JPB DATE

APPROVAL: JPB DATE

APPROVAL: JPB DATE

APPROVAL: JPB DATE

APPROVAL: JPB DATE

APPROVAL: JPB DATE

APPROVAL: JPB DATE

APPROVAL: JPB DATE

APPROVAL: JPB DATE

APPROVAL: JPB DATE

APPROVAL: JPB DATE

APPROVAL: JPB DATE

APPROVAL: JPB DATE

APPROVAL: JPB DATE

APPROVAL: JPB DATE

APPROVAL: JPB DATE

APPROVAL: JPB DATE

APPROVAL: JPB DATE

APPROVAL: JPB DATE

APPROVAL: JPB DATE

APPROVAL: JPB DATE

APPROVAL: JPB DATE

APPROVAL: JPB DATE

APPROVAL: JPB DATE

APPROVAL: JPB DATE

APPROVAL: JPB DATE

APPROVAL: JPB DATE

APPROVAL: JPB DATE

APPROVAL: JPB DATE

APPROVAL: JPB DATE

APPROVAL: JPB DATE

APPROVAL: JPB DATE

APPROVAL: JPB DATE

APPROVAL: JPB DATE

APPROVAL: JPB DATE

APPROVAL: JPB DATE

APPROVAL: JPB DATE

APPROVAL: JPB DATE

APPROVAL: JPB DATE

APPROVAL: JPB DATE

APPROVAL: JPB DATE

APPROVAL: JPB DATE

APPROVAL: JPB DATE

APPROVAL: JPB DATE

APPROVAL: JPB DATE

APPROVAL: JPB DATE

APPROVAL: JPB DATE

APPROVAL: JPB DATE

APPROVAL: JPB DATE

APPROVAL: JPB DATE

APPROVAL: JPB DATE

APPROVAL: JPB DATE

APPROVAL: JPB DATE

APPROVAL: JPB DATE

APPROVAL: JPB DATE

APPROVAL: JPB DATE

APPROVAL: JPB DATE

APPROVAL: JPB DATE

APPROVAL: JPB DATE

APPROVAL: JPB DATE

APPROVAL: JPB DATE

APPROVAL: JPB DATE

APPROVAL: JPB DATE

APPROVAL: JPB DATE

APPROVAL: JPB DATE

APPROVAL: JPB DATE

APPROVAL: JPB DATE

APPROVAL: JPB DATE

APPROVAL: JPB DATE

APPROVAL: JPB DATE

APPROVAL: JPB DATE

APPROVAL: JPB DATE

APPROVAL: JPB DATE

APPROVAL: JPB DATE

APPROVAL: JPB DATE

APPROVAL: JPB DATE

APPROVAL: JPB DATE

APPROVAL: JPB DATE

APPROVAL: JPB DATE

APPROVAL: JPB DATE

APPROVAL: JPB DATE

APPROVAL: JPB DATE

APPROVAL: JPB DATE

APPROVAL: JPB DATE

APPROVAL: JPB DATE

APPROVAL: JPB DATE

APPROVAL: JPB DATE

APPROVAL: JPB DATE

APPROVAL: JPB DATE

APPROVAL: JPB DATE

APPROVAL: JPB DATE

APPROVAL: JPB DATE

APPROVAL: JPB DATE

APPROVAL: JPB DATE

APPROVAL: JPB DATE

APPROVAL: JPB DATE

APPROVAL: JPB DATE

APPROVAL: JPB DATE

APPROVAL: JPB DATE

APPROVAL: JPB DATE

APPROVAL: JPB DATE

APPROVAL: JPB DATE

APPROVAL: JPB DATE

APPROVAL: JPB DATE

APPROVAL: JPB DATE

APPROVAL: JPB DATE

APPROVAL: JPB DATE

APPROVAL: JPB DATE

APPROVAL: JPB DATE

APPROVAL: JPB DATE

APPROVAL: JPB DATE

APPROVAL: JPB DATE

APPROVAL: JPB DATE

APPROVAL: JPB DATE

APPROVAL: JPB DATE

APPROVAL: JPB DATE

APPROVAL: JPB DATE

APPROVAL: JPB DATE

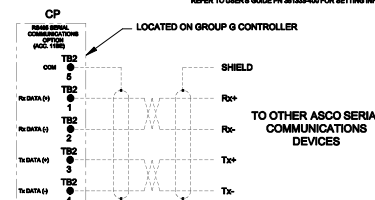
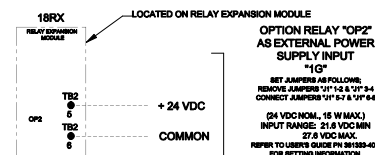
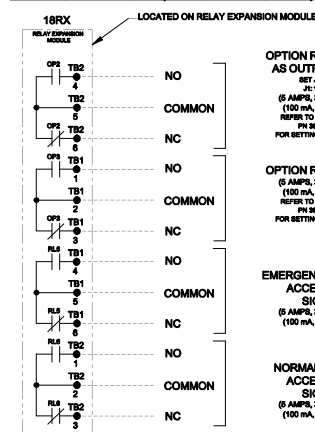
APPROVAL: JPB DATE

APPROVAL: JPB DATE

APPROVAL: JPB DATE

APPROVAL: JPB DATE

APPROVAL: JPB DATE

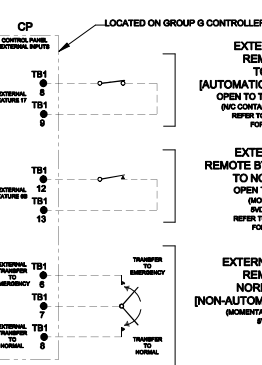
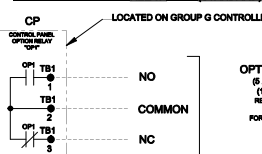
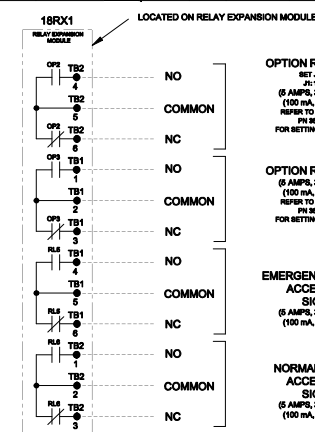




NOTES:

1. EARTH GROUND SHIELD AT HOST DEVICE ONLY.
2. FIELD WIRING: USE UL LISTED, STRANDED, TWISTED PAIRS, OVERALL FOIL SHIELD WITH STRANDED DRAIN WIRE SUITABLE FOR R8422 EQUIVALENT TO:

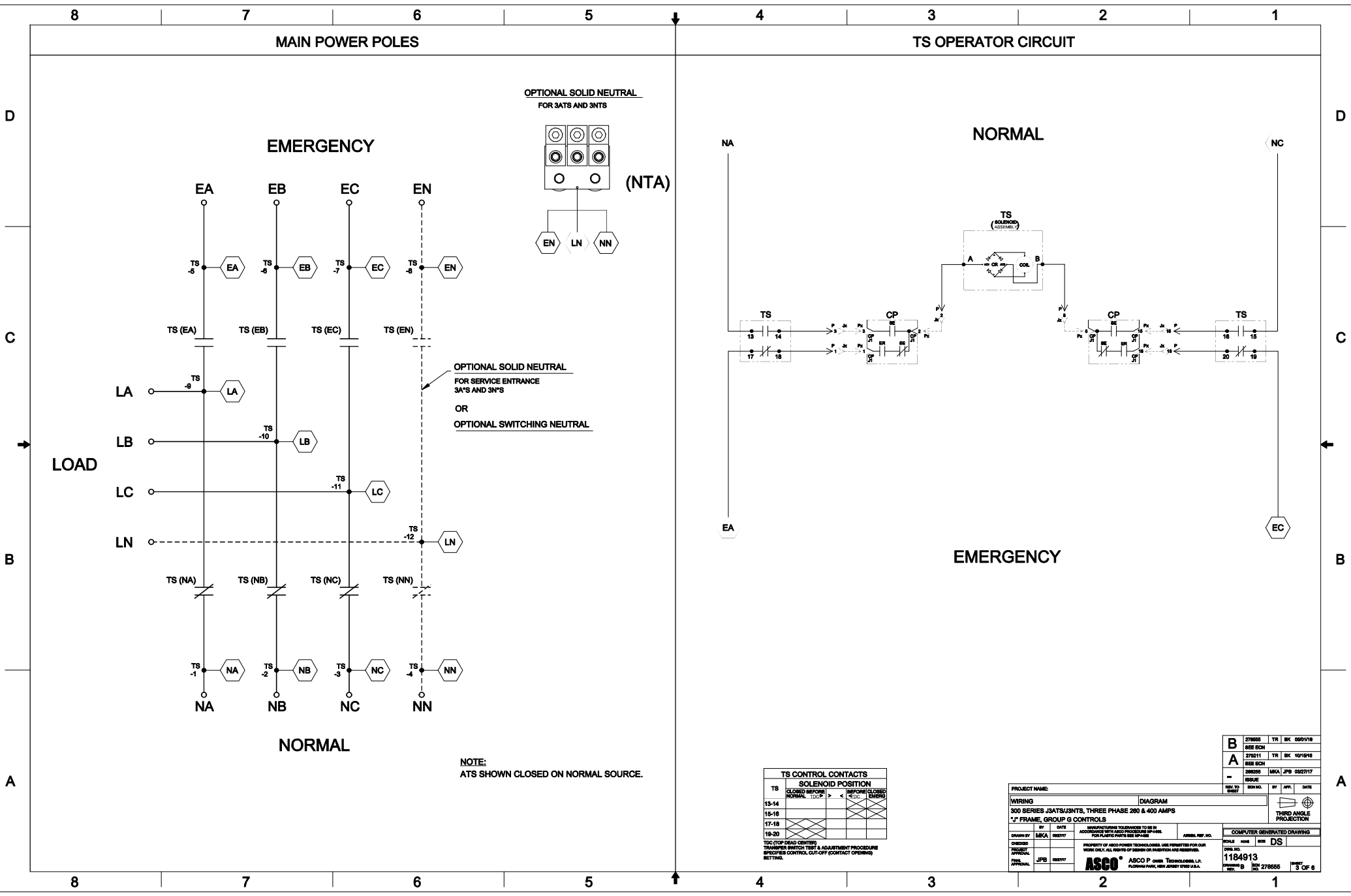
(STANDARD 80°C) BELDEN 9842 OR 9829
OR ALPHA 8222C OR 8222C

(PLENUM RATED) BELDEN 89729 OR 82729



B	278555	TR	BK	05/01/18
	05EE EGN			
A	275211	TR	BK	00/15/18
	05EE EGN			
==	206295	MKA	JPB	03/27/17
	05SURE			
REV. TO SUBMIT	CON. NO.	BY	APP.	DATE
 		THIRD ANGLE PROJECTION		
COMPUTER GENERATED DRAWING				
SCALE	NOTE	SIZE	DS	
DWG. NO.				
1184913				
DRAWING BY B	CON NO. 278555	SHEET 2 OF 6		

PROJECT NAME:		SHEET NO.		BY:		DATE:	
DRAWING:		SHEET NO.		BY:		DATE:	
300 SERIES J3ATS/J3NTS, THREE PHASE 200 & 400 AMPS				THIRD ANGLE PROJECTION			
"J" FRAME, GROUP G CONTROLS							
DESIGNED BY:		DATE:		REWORKED BY:		DATE:	
CHECKED BY:		DATE:		REWORKED BY:		DATE:	
APPROVED BY:		DATE:		REWORKED BY:		DATE:	
APPROVED BY:		DATE:		REWORKED BY:		DATE:	
MANUFACTURING TO DIMENSIONS TO BE AS SHOWN ON THE DRAWING. NO DIMENSIONS TO BE SHOWN ON THE DRAWING.				COMPUTER GENERATED DRAWING			
PROPERTY OF ASICO POWER TECHNOLOGIES, INC. NOT TO BE REPRODUCED OR TRANSMITTED IN ANY FORM OR BY ANY MEANS, ELECTRONIC OR MECHANICAL, WITHOUT PERMISSION IN WRITING FROM ASICO POWER TECHNOLOGIES, INC.				SCALE: NONE			
ASICO®				DS			
ASICO P.O. BOX 20000, TOLSON, ILL. 60140				1184913			
ASICO P.O. BOX 20000, TOLSON, ILL. 60140				SHEET 1 OF 2			



PROJECT NAME:		DIAGRAM	
WIRING		300 SERIES J3ATS/J3NTS, THREE PHASE 200 & 400 AMPS	
"J" FRAME, GROUP G CONTROLS			
BY	DATE	MANUFACTURING TOLERANCES TO BE IN ACCORDANCE WITH ASCO PRODUCTION PRACTICES FOR PLASTIC PARTS SEE 80-0000	ASCO REF. NO.
DESIGNED BY	DATE		
CHECKED BY	DATE		
PROJECT APPROVAL	DATE		
FINAL APPROVAL	DATE		
ASCO		ASCO P. OVER TECHNOLOGIES, L.P. FLORHAM PARK, NEW JERSEY 07033 U.S.A.	
DRAWING NO. 1184913		SCALE: 1"=1'-0"	
REV. B		REV. 278555	
SHEET 3 OF 8			

B	278555	TR	BC	05/01/18
SEE ECH				
A	278211	TR	BC	10/15/18
SEE ECH				
---	278555	MFA	JPS	05/01/17
REUSE				
REL. TO	REV. NO.	BY	APP.	DATE
THIRD ANGLE PROJECTION				
COMPUTER GENERATED DRAWING				
SCALE	MODE	SIZE	DS	

D

C

B

A

D

C

B

A

