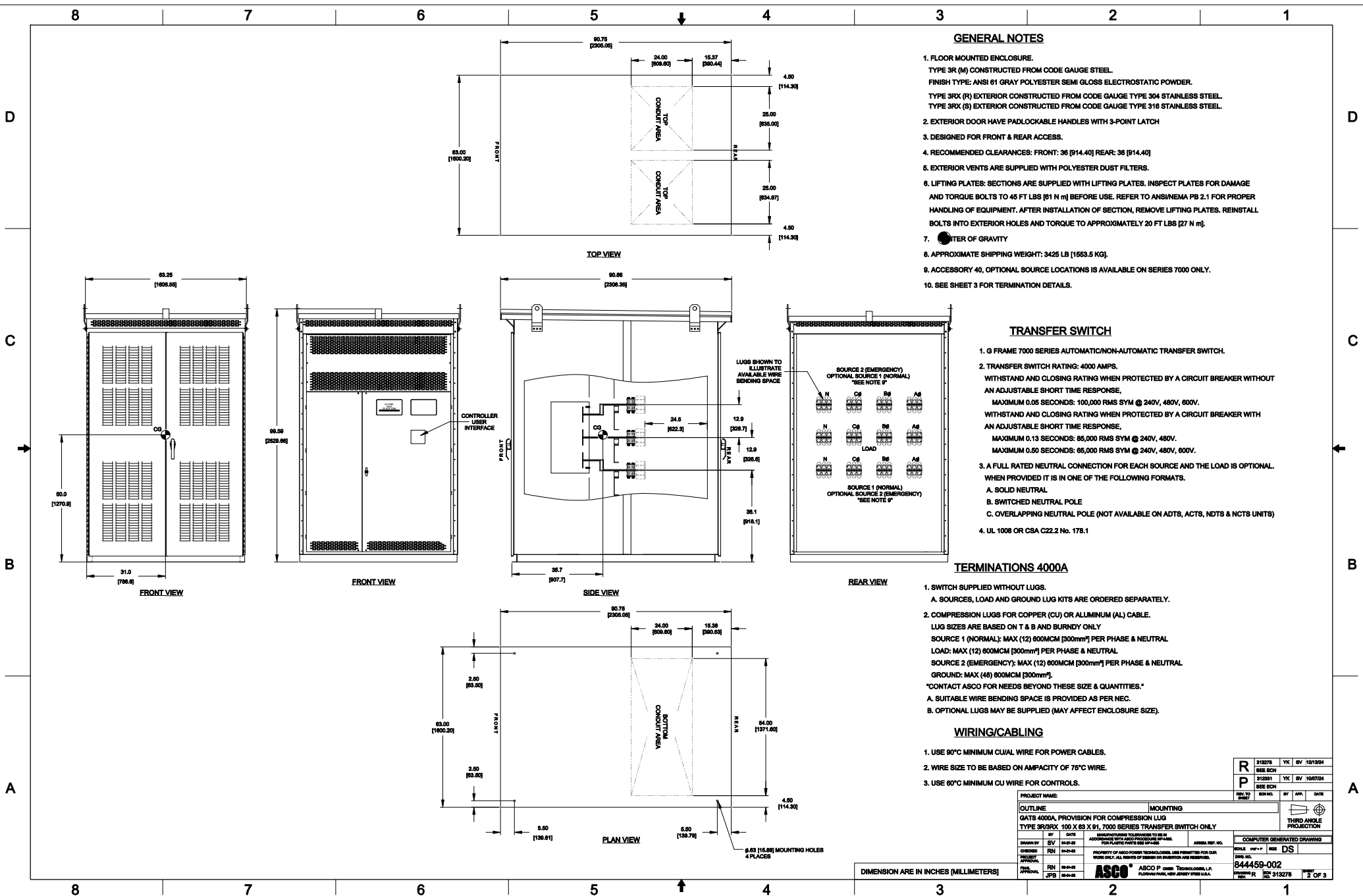


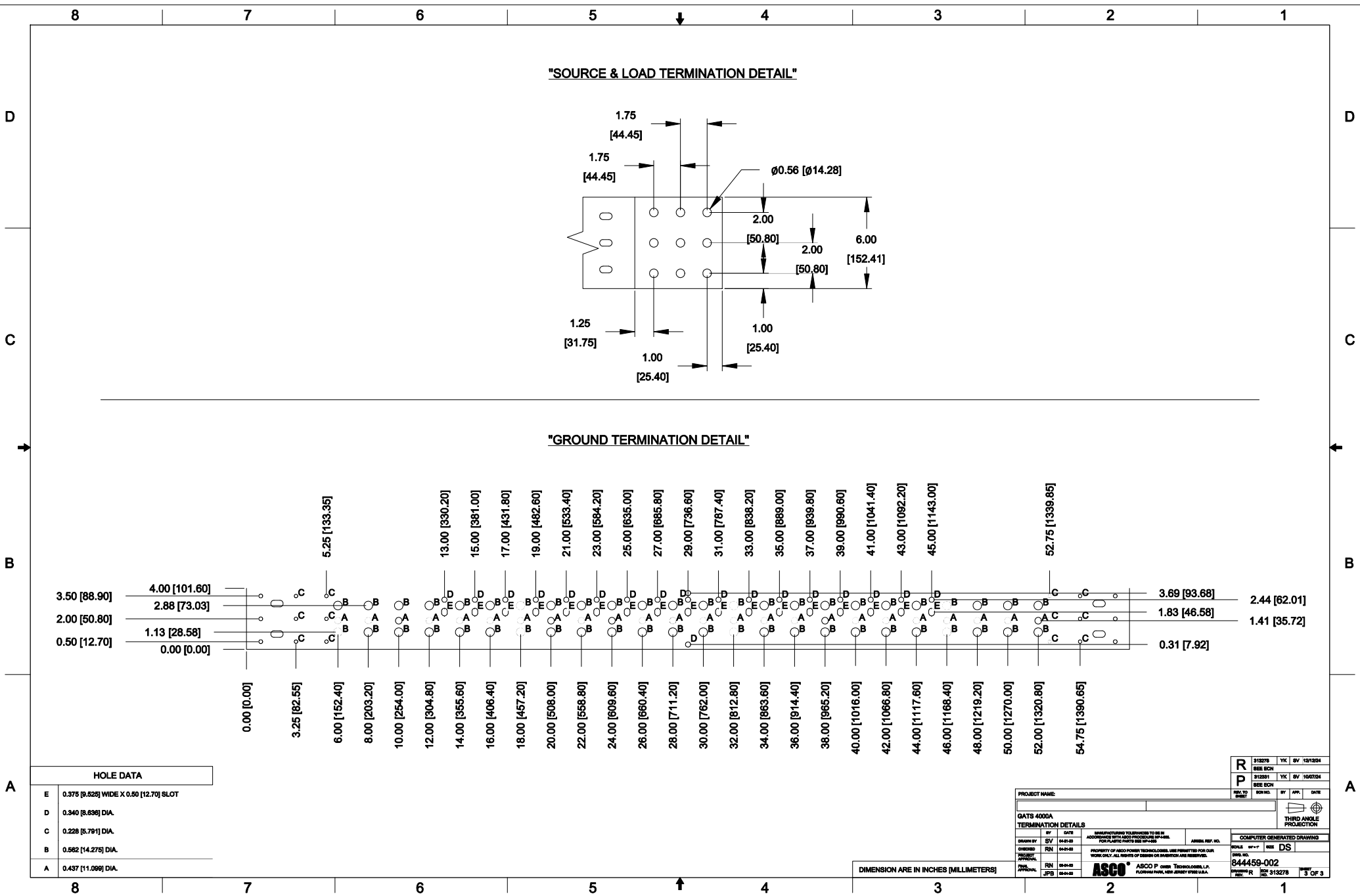
ATS Submittal

Transfer Switch Details

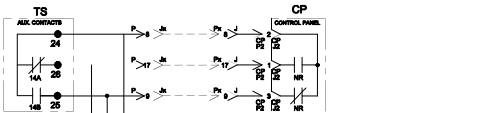
#11	ATS	AMPS: 4000	QTY: 3
Product	: 7000 Series Transfer Switches	Catalog Number	: G07ATSB34000N5XM
Service Voltage / Hz	: 480V/60Hz	Optional Accessories	: 31BG1,44G
Bypass Isolation	: Not Applicable	Product Description	: 7000 Series, Automatic Open Transition Transfer Switch
No. of Switched Poles: 4	: 4	Neutral Configuration	: Switched [B]
Withstand Rating:	: See WCR Table Below	No. of Cables & Lug Size	: 12, #3/0 AWG to 750 MCM
Frame = G, Switch Rating = 4000, Series = 7000			
Enclosure	: 3R(M)-UL Type 3R secure double door enclosure (See Disclaimer 3)	Service	: Three Phase, 4-wire
Extended Warranty	: Not Included	Markings	:

#	ACCESSORY DESCRIPTIONS	
	Accessory Code	Description
1	31BG1	Status Relay Bundle- Provides dry contacts for each of the following statuses, (2) Form-C contacts for Normal Source Acceptability, (2) Form-C contacts for Emergency Source Acceptability, and (4) Form-C Contacts for Pre/Post Transfer Signaling. Each set of contacts is rated for 6A at 120Vac, 250Vac Max.
2	44G	208-240VAC and or 440-480VAC Accessory 44 Strip heater is designed to keep humidity and or temperature within the ATS enclosure at acceptable levels. This accessory consists of a mounting bracket with strip heater, thermostat and terminal block. Heater powered from load side of TS.





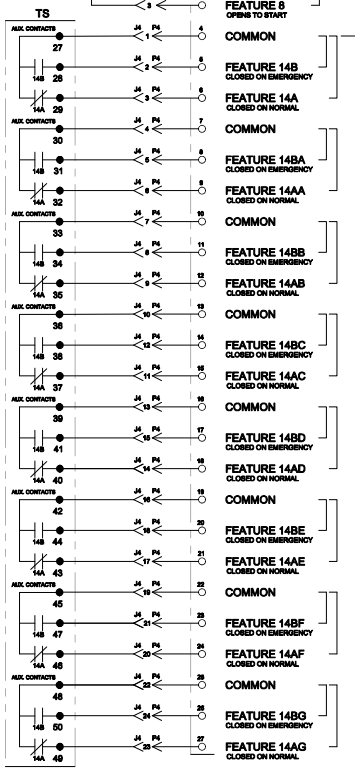
FIELD CONNECTIONS



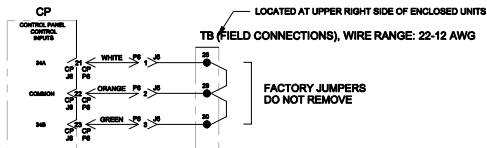
LOCATED AT UPPER RIGHT SIDE OF ENCLOSED UNIT.

TB (FIELD CONNECTIONS), WIRE RANGE: 22-12 AWG

ENGINE
STARTING
SIGNALS
(5 AMP, 250VDC)



TS
AUXILIARY
CONTACTS
(10 AMP, 250VDC)
(10 AMP, 250VAC)
GENERAL PURPOSE



LOCATED AT UPPER RIGHT SIDE OF ENCLOSED UNITS

TB (FIELD CONNECTIONS), WIRE RANGE: 22-12 AWG

FACTORY JUMPERS
DO NOT REMOVE

FEATURE 17
REMOTE TRANSFER
TO EMERGENCY

COMMON

NOT USED

NOT USED

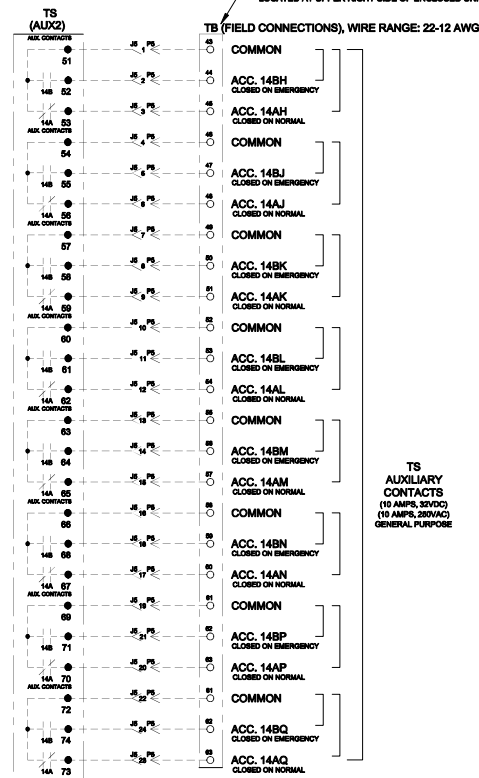
NOT USED

NOT USED

NOT USED

CUSTOMER SUPPLIED
NORMALLY OPEN
CONTACT SUITABLE FOR
5000 LOW ENERGY CIRCUIT
CLOSE CONTACT TO TRANSFER
TO EMERGENCY

OPTIONAL ACCESSORY (ACC.) AUXILIARY CONTACTS



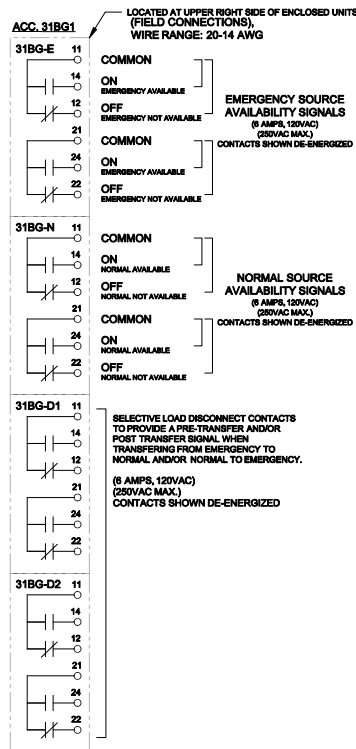
LOCATED AT UPPER RIGHT SIDE OF ENCLOSED UNIT

TB (FIELD CONNECTIONS), WIRE RANGE: 22-12 AWG

TS
AUXILIARY
CONTACTS
(10 AMP, 250VDC)
(10 AMP, 250VAC)
GENERAL PURPOSE

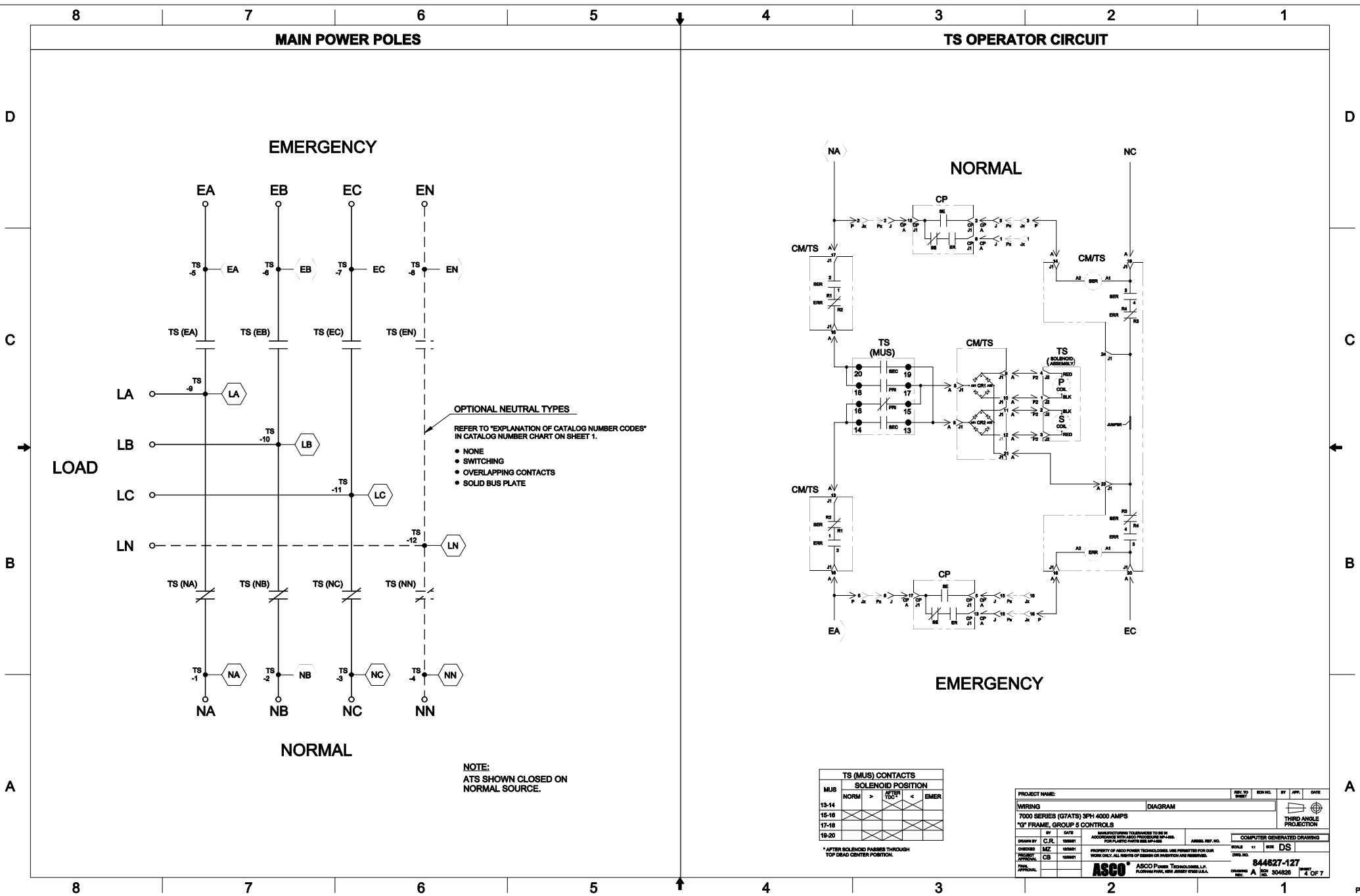
PROJECT NAME:		REV. TO:	REV. NO.:	BY:	APP.:	DATE:
WIRING		DIAGRAM				
7000 SERIES (GTATS) 3PH 4000 AMP						
"G" FRAME, GROUP 5 CONTROLS						
BY:	DATE:	CONSTRUCTION TOLERANCES TO BE IN ACCORDANCE WITH ASCO PROCESSING PLANT. PLASTIC PARTS USE SP-100.		COMPUTER GENERATED DRAWING		
DRAWN BY:	C.J.L.	REVISION:	1	SCALE:	1"	DS
CHECKED:	M.Z.	ISSUED:	1	PROPERTY OF ASCO POWER TECHNOLOGIES, LLC. NOT TO BE REPRODUCED OR COPIED WITHOUT WRITTEN PERMISSION OF ASCO POWER TECHNOLOGIES, LLC.		
APPROVED:	C.B.	ISSUED:	1	WORK ONLY. ALL RIGHTS OF DESIGN OR INVENTION ARE RESERVED.		
FINAL APPROVAL:		ASCO		ASCO POWER TECHNOLOGIES, LLC. 844627-127		
		FLORHAM PARK, NEW JERSEY 07432 U.S.A.		DRAWING NO. 844627-127		
				REV. A 304626 2 OF 7		

FIELD CONNECTIONS (CONTINUED)



ACC. 31BG1

PROJECT NAME:		REV. TO	REV. NO.	BY	DATE
WIRING		DIAGRAM			
7000 SERIES (GTATS) 3PH 4000 AMPS					
"G" FRAME, GROUP 5 CONTROLS					
BY	DATE	CONTRACTING TOLERANCES TO BE IN ACCORDANCE WITH ASCO PROCESSING INSTRUCTIONS. PLASTIC PARTS SEE SUPPLIERS.		COMPUTER GENERATED DRAWING	
DRAWN BY	C.J.L.	12/28/01	ASCO REF. NO.	SCALE	1:1
CHECKED	MZ	12/28/01	PROPERTY OF ASCO POWER TECHNOLOGIES, INC. NO REUSE OR REPRODUCTION WITHOUT WRITTEN PERMISSION OF ASCO. WORK ONLY ALL RIGHTS OF DESIGN OR INVENTION ARE RESERVED.	NO.	DS
APPROVED	CB	12/28/01	ASCO POWER TECHNOLOGIES, L.P. FLORHAM PARK, NEW JERSEY 07931 U.S.A.		844627-127
				REV.	A
				REV.	304626
				REV.	3 OF 7



PROJECT NAME:		REV. TO SHEET	REV. NO.	BY	APP.	DATE
WIRING		DIAGRAM				
7000 SERIES (G7ATS) 3PH 4000 AMP		THIRD ANGLE PROJECTION				
"G" FRAME, GROUP 5 CONTROLS		COMPUTER GENERATED DRAWING				
BY	DATE	CONSTRUCTION TOLERANCES TO BE IN ACCORDANCE WITH ASCO PROCESSING INSTRUCTIONS		SCALE		1" = 8" DS
DRAWN BY	C.J.L.	10/20/01	PROPERTY OF ASCO POWER TECHNOLOGIES, L.P. NO REUSE OR REPRODUCTION WITHOUT WRITTEN PERMISSION OF ASCO POWER TECHNOLOGIES, L.P.		DRAWING NO. 844627-127	
CHECKED	MZ	10/20/01	WORK ONLY ALL RIGHTS OF DESIGN OR INVENTION ARE RESERVED.		REV. A	
DESIGNED	CB	10/20/01	ASCO POWER TECHNOLOGIES, L.P.		REV. A	
APPROVED			ASCO POWER TECHNOLOGIES, L.P.		REV. A	
ASCO		ASCO POWER TECHNOLOGIES, L.P.		REV. A		4 OF 7

D

C

B

A

D

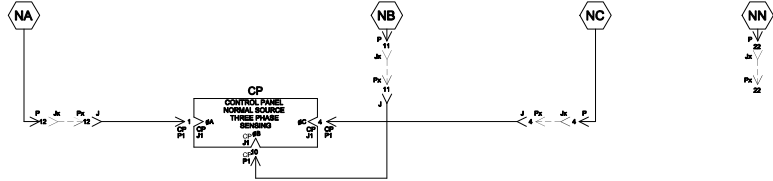
C

B

A

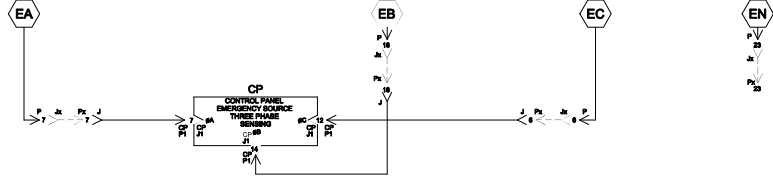
NORMAL SOURCE CIRCUITS

NORMAL



EMERGENCY SOURCE CIRCUITS

EMERGENCY



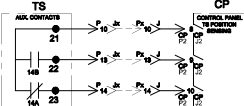
LOAD TERMINAL CIRCUITS

LOAD

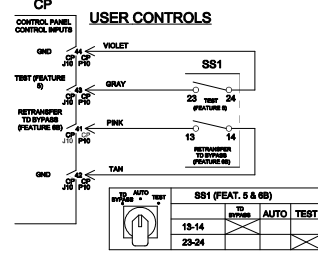


CONTROL SIGNALS & INDICATION

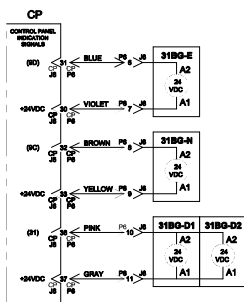
TS POSITION SENSING



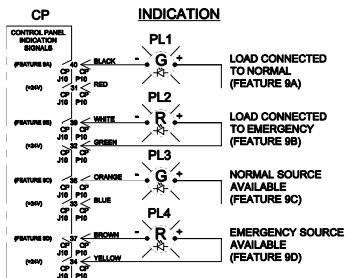
USER CONTROLS



ACC. 31BG1



INDICATION



PROJECT NAME:		REV. TO:	REV. NO.:	BY:	APP.:	DATE:
WIRING		DIAGRAM				
7000 SERIES (GTATS) 3PH 4000 AMPS						
"G" FRAME, GROUP 5 CONTROLS						
BY:	DATE:	CONSTRUCTION TOLERANCES TO BE AS SHOWN UNLESS OTHERWISE SPECIFIED		COMPUTER GENERATED DRAWING		
DESIGNED BY:	C.H.	10/20/01	PROPERTY OF ASCO POWER TECHNOLOGIES, L.P. NO REUSE OR REPRODUCTION WITHOUT WRITTEN PERMISSION FROM ASCO	SCALE:	1:1	SIZE: DS
CHECKED BY:	M.Z.	10/20/01	WORK ONLY. ALL RIGHTS OF DESIGN OR INVENTION ARE RESERVED.	DRAWING NO.:	844627-127	
APPROVED BY:	C.B.	10/20/01		REV.:	A	REV. NO. 304626
				SHEET 5 OF 7		

ASCO

ASCO POWER TECHNOLOGIES, L.P.
FLOUROS PARK, NEW JERSEY 07093 U.S.A.

