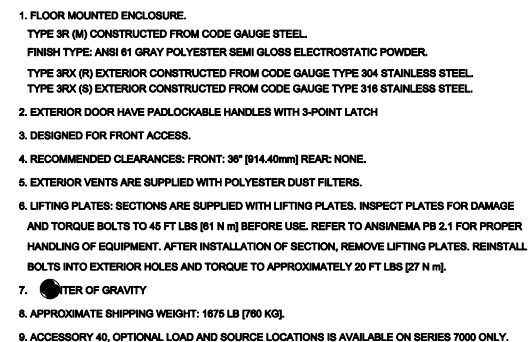


ATS Submittal

Transfer Switch Details

#10	ATS	AMPS: 2000	QTY: 2
Product	: Series 300	Catalog Number	: G03ATSB32000CGXM
Service Voltage / Hz	: 208V/60Hz	Optional Accessories	: 11BE,44G
Bypass Isolation	: Not Applicable	Product Description	: 300 Series, Automatic Open Transition Transfer Switch
No. of Switched Poles: 4	: 4	Neutral Configuration	: Switched [B]
Withstand Rating:	: See WCR Table Below	No. of Cables & Lug Size	: 6, 1/0 AWG to 600 MCM
Frame = G, Switch Rating = 2000, Series = 300			
Enclosure	: 3R(M)-UL Type 3R secure double door enclosure (See Disclaimer 3)	Service	: Three Phase, 4-wire
Extended Warranty	: Not Included	Markings	:

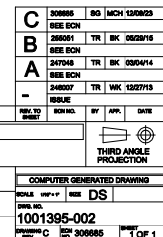
#	ACCESSORY DESCRIPTIONS	
	Accessory Code	Description
1	11BE	Adds the following features to the Group G controller: (1) Serial RS-485 Modbus Communications (2) Multi-Schedule Engine Exerciser (3) a 300 Entry Event Log and (4) a common alarm output function. When applied on 3-phase systems it also enables: (1) 3-Phase Emergency Source VLL sensing (2) Phase Rotation Monitoring (3) Emergency Source VLL Unbalance Monitoring.
2	44G	Strip heater w/ thermostat, wired to load terminals: 208-600 volts



1. G FRAME AUTOMATIC TRANSFER SWITCH.
2. TRANSFER SWITCH RATING: 2000 AMPS
WITHSTAND AND CLOSING RATING WHEN PROTECTED BY A CIRCUIT BREAKER WITHOUT AN ADJUSTABLE SHORT TIME RESPONSE.
MAXIMUM 0.05 SECONDS, 85,000 RMS SYM @ 240V, 480V, 600V.
WITHSTAND AND CLOSING RATING WHEN PROTECTED BY A CIRCUIT BREAKER WITH AN ADJUSTABLE SHORT TIME RESPONSE.
MAXIMUM 0.30 SECONDS, 42,000 RMS SYM @ 240V, 480V.
MAXIMUM 0.50 SECONDS, 36,000 RMS SYM @ 240V, 480V.
3. A FULL RATED NEUTRAL CONNECTION FOR EACH SOURCE AND THE LOAD IS OPTIONAL. WHEN PROVIDED IT IS IN ONE OF THE FOLLOWING FORMATS.
 - A. SOLID NEUTRAL
 - B. SWITCHED NEUTRAL POLE
 - C. OVERLAPPING NEUTRAL POLE (NOT AVAILABLE ON ADTS & ACTS UNITS)
4. UL 1008 OR CSA C22.2 No. 178.1

1. MECHANICAL (SCREW TYPE) LUGS FOR CU/AL CABLE.
SOURCE 1 (NORMAL): (8) 1/0-600MCM [50-300mm] PER PHASE & NEUTRAL
LOAD: (8) 1/0-600MCM [50-300mm] PER PHASE & NEUTRAL
SOURCE 2 (EMERGENCY): (8) 1/0-600MCM [50-300mm] PER PHASE & NEUTRAL
GROUND: (18) 1/0-600MCM [50-300mm]
A. SUITABLE WIRE BENDING SPACE IS PROVIDED AS PER NEC.
2. SWITCH MAY BE SUPPLIED WITHOUT LUGS.
3. OPTIONAL LUGS MAY BE SUPPLIED (MAY AFFECT ENCLOSURE SIZE).

1. USE 90°C MINIMUM CU/AL WIRE FOR POWER CABLES.
2. WIRE SIZE TO BE BASED ON AMPACITY OF 75°C WIRE.
3. USE 60°C MINIMUM CU WIRE FOR CONTROLS.



THREE PHASE WIRING FOR ASCO[®] 300 SERIES TRANSFER SWITCHES (G3ATS/G3NTS) 1000-3200 AMPERES WITH GROUP G CONTROLS

GENERAL INFORMATION

COMMON ALARM & NOT IN AUTO SIGNALING FEATURES

A SET OF FORM C CONTACTS IS PROVIDED ON THE GROUP G CONTROLLER AS "OP1". THE FEATURE SETTING OF "OP1" CAN BE SET TO OPERATE THE CONTACTS AS A "NOT IN AUTO" SIGNAL.

WHEN "OP1" IS SET FOR "NOT IN AUTO", THE OUTPUT CONTACTS CHANGE POSITION WHEN THE TRANSFER IS BEING INHIBITED FROM TRANSFERRING TO THE EMERGENCY SOURCE (FEATURE 34B) OR THE TRANSFER SWITCH HAS BEEN SET FOR NON-AUTOMATIC (MANUAL) OPERATION.

WHEN OPTIONAL ACCESSORY 1118E "SOFTWARE BUNDLE" IS PART OF THE TRANSFER SWITCH ASSEMBLY, "OP1" MAY ALTERNATIVELY SET FOR A "COMMON ALARM" SIGNAL. THE OUTPUT CONTACTS CHANGE POSITION WHEN A "COMMON ALARM" IS NOT PRESENT AND RESET WHEN A "COMMON ALARM" CONDITION IS PRESENT. THE "COMMON ALARM" SIGNAL CONDITIONS ARE SELECTABLE.

ADDITIONAL "COMMON ALARM" AND "NOT IN AUTO" CONTACTS ARE AVAILABLE WHEN OPTIONAL ACCESSORY 16RX (RELAY EXPANSION MODULE) IS INCLUDED IN THE TRANSFER SWITCH ASSEMBLY. OUTPUT CONTACTS "OP2" AND/OR "OP3" WILL PROVIDE SIGNAL FUNCTIONS WHEN THE FEATURE SETTING OF EACH IS SET TO OPERATE AS "COMMON ALARM" OR "NOT IN AUTO".

CONTACTS ARE RATED 5 AMPS RESISTIVE AT 30 VDC MAXIMUM, 100 mA AT 5 VDC MINIMUM.

REFER TO USER'S GUIDE, ASCO GROUP G CONTROLLER FOR AUTOMATIC & NON-AUTOMATIC TRANSFER SWITCHES. PART NUMBER 381333-400 FOR SETTING INFORMATION.

EXTERNAL POWER SUPPLY COMPATIBILITY

USE OF AN EXTERNAL POWER SUPPLY IS USEFUL WHEN REQUIRED TO EXTEND THE FOLLOWING CONTROLLER TIME DELAYS BEYOND 6 SECONDS:

FEATURE 1C - OVERRIDE MOMENTARY NORMAL SOURCE OUTAGES
FEATURE 1F - OVERRIDE MOMENTARY EMERGENCY SOURCE OUTAGES

AN EXTERNAL POWER SUPPLY IS ALSO USEFUL WHEN THE TRANSFER SWITCH IS USED WITH COMMUNICATIONS FEATURES BY ENABLING THE CONTROLLER TO CONTINUE COMMUNICATING

AN EXTERNAL POWER SOURCE MAY BE PROVIDED TO THE CONTROLLER, UNTIL THE NORMAL SOURCE OR EMERGENCY SOURCE IS AVAILABLE, BY USE OF:

- AN EXTERNAL 24 VDC POWER SUPPLY WITH ACCESSORY 1BRX (RELAY EXPANSION MODULE) OR
- OPTIONAL ACCESSORY 1UP (UNINTERRUPTIBLE POWER SUPPLY MODULE)

EXTERNAL 24 VDC POWER SUPPLY "1G":

AN EXTERNAL 24 VDC POWER SUPPLY MAY BE USED TO POWER THE CONTROLLER WHEN ACCESSORY 18RX (RELAY EXPANSION MODULE) IS INCLUDED IN THE TRANSFER SWITCH ASSEMBLY. OUTPUT CONTACTS "OFF" WILL PROVIDE EXTERNAL 24 VDC POWER SUPPLY FUNCTIONALITY WHEN ITS FEATURE SETTING IS SET TO OPERATE AS "1G". ADDITIONALLY, JUMPERS MUST BE RECONFIGURED ON ACCESSORY 18RX (RELAY EXPANSION MODULE) TO ENABLE THIS FUNCTION AS FOLLOWS:

REMOVE JUMPERS "J1" 1-2 & "J1" 3-4
CONNECT JUMPERS "J1" 5-7 & "J1" 6-8

THE OUTPUT CONTACTS CHANGE POSITION WHEN EITHER THE NORMAL SOURCE OR EMERGENCY SOURCE IS AVAILABLE AND RESET WHEN NEITHER SOURCE IS AVAILABLE. THE "OP2" N/C CONTACT SWITCHES CUSTOMER PROVIDED +24 VDC FROM THE EXTERNAL POWER SUPPLY TO THE CONTROLLER.

REFER TO USER'S GUIDE, ASCO GROUP G CONTROLLER FOR AUTO SWITCHES. PART NUMBER 381333-100 FOR SETTING INFORMATION.

ACCESSORY 1UP (UNINTERRUPTIBLE POWER SUPPLY):
WHEN OPTIONAL ACCESSORY 1UP IS INCLUDED IN THE TRANSFER SWITCH ASSEMBLY, THE CONTROLLER IS PROVIDED WITH LIMITED RESERVE POWER (APPROXIMATELY 3 MINUTES).

LOAD CURRENT METERING

WHEN OPTIONAL ACCESSORY 23GB IS PART OF THE TRANSFER SWITCH ASSEMBLY, THREE PHASE CURRENT MEASUREMENTS ARE AVAILABLE FOR DISPLAY ON THE GROUP G CONTROLLER.

REFER TO USER'S GUIDE, ASCO GROUP G CONTROLLER FOR AUTOMATIC & NON-AUTOMATIC TRANSFER SWITCHES. PART NUMBER 381333-400 FOR INFORMATION ON USE

ADVANCED-FUNCTION SOFTWARE BUNDLE

WHEN OPTIONAL ACCESSORY 11BE IS PART OF THE TRANSFER SWITCH ASSEMBLY, AN ADVANCED-FUNCTION SOFTWARE BUNDLE IS AVAILABLE TO PERFORM THE FOLLOWING FUNCTIONS:

- SERIAL COMMUNICATIONS (RS-485)
- PROGRAMMABLE ENGINE EXERCISER
- EVENT LOG
- COMMON ALARM SIGNAL CAPABILITY ON GROUP G CONTROLLER "OP1" OUTPUT

- (3 PHASE SENSING ONLY)
- 3 PHASE EMERGENCY SOURCE SENSING.
- PHASE ROTATION SENSING.
- EMERGENCY VOLTAGE UNBALANCE SENSING

REFER TO USER'S GUIDE, ASCO GROUP G CONTROLLER FOR AUTOMATIC & NON-AUTOMATIC TRANSFER SWITCHES. PART NUMBER 881333-400 FOR INFORMATION ON THESE FUNCTIONS.

NOTES

1. SWITCH SHOWS DE-ENERGIZED CONNECTED TO NORMAL SOURCE.
2. DEVICE SYMBOLS AND DESIGNATIONS ARE IN ACCORDANCE WITH NEMA PUB. ICS 1, PART 1-40A.
3. ALL WIRING IS #16 AWG, TINNED, STRANDED COPPER UNLESS OTHERWISE INDICATED.
4. INDICATES COUNTERMOUNT CONNECTION POINTS.
5. INDICATES FACTORY CONNECTION POINTS FOR THE POSITION.
6. CONNECTION POINTS THAT HAVE BOTH CUSTOMER CONNECTIONS AND FACTORY CONNECTIONS ARE INDICATED BY BOTH TYPES OF POINTS.
7. THE TRANSFER UNIT IS MOUNTED ON THE BACK INSIDE SURFACE OF THE ENCLOSURE. THE CONTROL PANEL AND ANY OPTIONAL ACCESSORIES ARE MOUNTED ON THE INSIDE SURFACE OF THE FRONT DOOR.
8. AN OPERATORS MANUAL IS FURNISHED WITH EACH AUTOMATIC STARTER. THE MANUAL SHOULD BE READ PRIOR TO INSTALLATION AND OPERATION OF THE SWITCH.
9. GROUND STRAP ON CONTROL PANEL IS AFFIXED TO CHASSIS (ENCLOSURE).

CATALOG NUMBER SUFFIXES										EXPLANATION OF CATALOG NUMBER CODES																																																																																																																																																																																																																																																																																																																																																																																																																																																																																																																																																																																																																																																																																																																																																																																																																																																																																																																																																																																																																																																																																																																																																																																																																																																																			
TS FRAME	CATALOG TYPE	NEUTRAL TYPE	PHASE POLES	AMPS	VOLT CODE	CONTROLLER	OPTIONAL ACCESSORY	ENCLOSURE CODE																																																																																																																																																																																																																																																																																																																																																																																																																																																																																																																																																																																																																																																																																																																																																																																																																																																																																																																																																																																																																																																																																																																																																																																																																																																																					
									NEUTRAL TYPE		VOLTAGE CODES 3 PHASE / 1 OR 4 WIRE R/C OR W/C		ENCLOSURE CODES																																																																																																																																																																																																																																																																																																																																																																																																																																																																																																																																																																																																																																																																																																																																																																																																																																																																																																																																																																																																																																																																																																																																																																																																																																																																
									CODE A B	DESCRIPTION	CODE	NOMINAL VOLTAGE	CODE	TYPE	DESCRIPTION																																																																																																																																																																																																																																																																																																																																																																																																																																																																																																																																																																																																																																																																																																																																																																																																																																																																																																																																																																																																																																																																																																																																																																																																																																																														
G	SATS SNTS	A B	3	1000	C D E F G H K L M N P Q R	G	X		C F G H M N P Q	SOLID SWITCHING	C D E F G H J K L M N P Q R	208 220 240 277 400 416 480 480 600 600	BLANK C	1	OPEN TYPE (NO ENCLOSURE) GENERAL PURPOSE, INDOOR																																																																																																																																																																																																																																																																																																																																																																																																																																																																																																																																																																																																																																																																																																																																																																																																																																																																																																																																																																																																																																																																																																																																																																																																																																																														

CATALOG NUMBER _____
ASCO • CERTIFIED TO
 S.O.

BY
DATE

PROJECT NAME:

WIRING

300 SERIES (G

G-FRAME, GR	
	BY

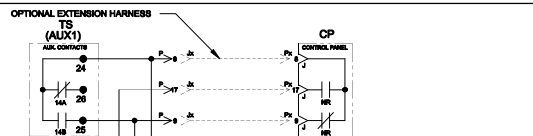
DRAWN BY	DJB
CHECKED	DK

PROJECT APPROVAL	BK	
---------------------	----	--

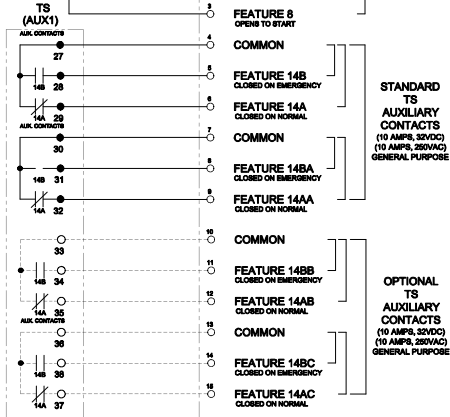
FINAL APPROVAL		
-------------------	--	--

278211	TR	IK	10/19/10		
SEE ECH					
285313	TR	IK	10/19/17		
0174 800LIFE PHASE BOMB					
284870	TR	IK	06/20/10		
SEE ECH					
282347	APP	AB	13/22/14		
SEE ECH					
347772	TR	IK	01/14/14		
SEE ECH					
317048	TR	IK	3/6/14		
SEE ECH					
284825	AE	IK	01/19/14		
SEE ECH					
246111	AE	IK	01/10/14		
SEE ECH					
340669	IK	IK	12/23/13		
SEE ECH					
284870	IK	IK	10/20/13		
SEE ECH					
NEW TO BOMB	NO INCL.	BY APP.	DATE		
COMPUTER GENERATED DRAWING					
DRAW. NO.	REV.	DS			
1001662					
DRAWING BY	DATE	TIME	OF		
278211					

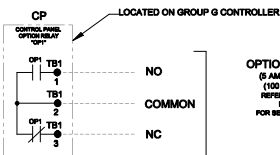
FIELD CONNECTIONS



LOCATED ON FRONT OF TRANSFER SWITCH FRAME
TB (FIELD CONNECTIONS), WIRE RANGE: 22-12 AWG

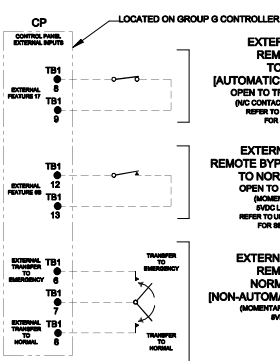


CONTROLLER OPTION RELAY "OP1" (STANDARD)



OPTION RELAY "OP1"
(5 AMPS, 30 VDC MAX.)
(100 mA, 5 VDC MIN.)
REFER TO USER'S GUIDE
PH 38133-403
FOR SETTING INFORMATION.

CONTROLLER REMOTE CONTROL FEATURES

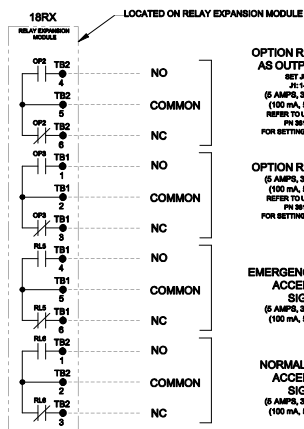


EXTERNAL FEATURE 17
REMOTE TRANSFER
TO EMERGENCY
[AUTOMATIC TRANSFER TYPE ONLY]
OPEN TO TRANSFER TO EMERGENCY
(NO CONTACT, INDC LOW ENERGY RATING)
REFER TO USER'S GUIDE PH 38133-403
FOR SETTING INFORMATION.

EXTERNAL FEATURE 68
REMOTE BYPASS OF RETRANSFER
TO NORMAL TIME DELAY
OPEN TO BYPASS TIME DELAY
(NO CONTACT, INDC LOW ENERGY RATING)
REFER TO USER'S GUIDE PH 38133-403
FOR SETTING INFORMATION.

EXTERNAL MANUAL TRANSFER
REMOTE TRANSFER TO
NORMAL OR EMERGENCY
[NON-AUTOMATIC TRANSFER TYPE ONLY]
(NO CONTACT, INDC LOW ENERGY RATING)

OPTIONAL ACCESSORY 18RX (RELAY EXPANSION MODULE)



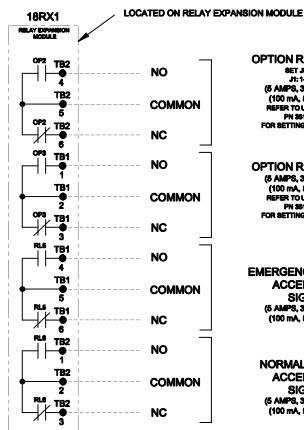
OPTION RELAY "OP2"
AS OUTPUT RELAY
SET JUMPERS
J1: 12 & 54
(5 AMPS, 30 VDC MAX.)
(100 mA, 5 VDC MIN.)
REFER TO USER'S GUIDE
PH 38133-403
FOR SETTING INFORMATION.

OPTION RELAY "OP3"
(5 AMPS, 30 VDC MAX.)
(100 mA, 5 VDC MIN.)
REFER TO USER'S GUIDE
PH 38133-403
FOR SETTING INFORMATION.

EMERGENCY SOURCE
ACCEPTABLE
SIGNAL
(5 AMPS, 30 VDC MAX.)
(100 mA, 5 VDC MIN.)

NORMAL SOURCE
ACCEPTABLE
SIGNAL
(5 AMPS, 30 VDC MAX.)
(100 mA, 5 VDC MIN.)

OPTIONAL ACCESSORY 18RX1 (SECOND RELAY EXPANSION MODULE)



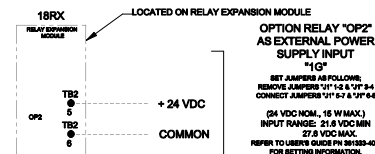
OPTION RELAY "OP2"
SET JUMPERS
J1: 12 & 54
(5 AMPS, 30 VDC MAX.)
(100 mA, 5 VDC MIN.)
REFER TO USER'S GUIDE
PH 38133-403
FOR SETTING INFORMATION.

OPTION RELAY "OP3"
(5 AMPS, 30 VDC MAX.)
(100 mA, 5 VDC MIN.)
REFER TO USER'S GUIDE
PH 38133-403
FOR SETTING INFORMATION.

EMERGENCY SOURCE
ACCEPTABLE
SIGNAL
(5 AMPS, 30 VDC MAX.)
(100 mA, 5 VDC MIN.)

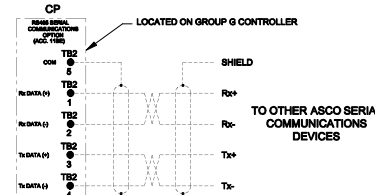
NORMAL SOURCE
ACCEPTABLE
SIGNAL
(5 AMPS, 30 VDC MAX.)
(100 mA, 5 VDC MIN.)

"OP2"
OPTIONAL
USES



OPTION RELAY "OP2"
AS EXTERNAL POWER
SUPPLY INPUT
"IG"
SET JUMPERS AS FOLLOWS:
REMOVE JUMPERS "J1" & "J2" & "J3"
CONNECT JUMPERS "J1" & "J2" & "J3" & "J4"
(24 VDC MIN., 15 W MAX.)
INPUT RANGE: 21.6 VDC MIN.
27.8 VDC MAX.
REFER TO USER'S GUIDE PH 38133-403
FOR SETTING INFORMATION.

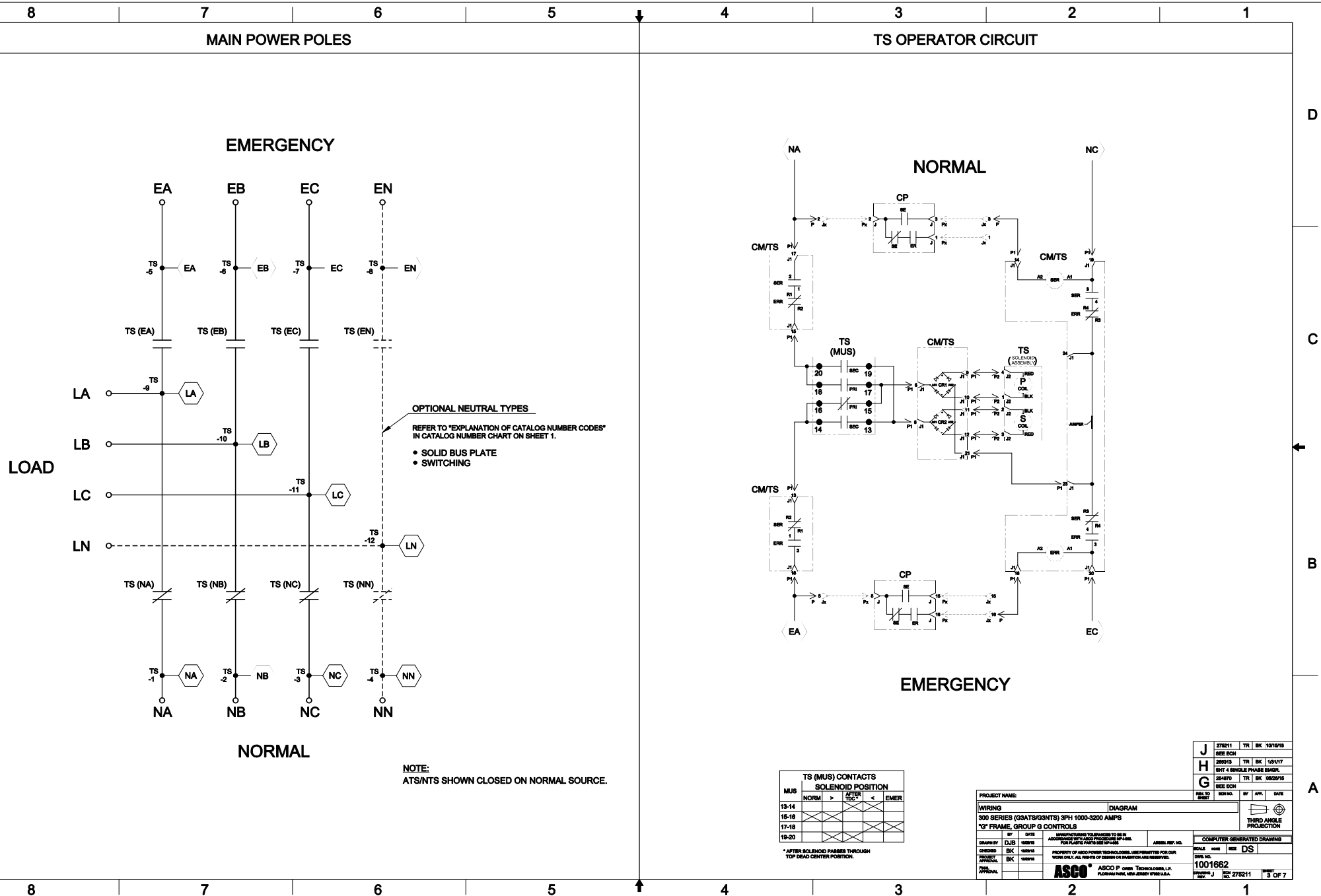
RS485 SERIAL COMMUNICATIONS OPTION



TO OTHER ASCO SERIAL
COMMUNICATIONS
DEVICES

NOTES:
1. EARTH GROUND SHIELD AT HOST DEVICE ONLY.
2. FIELD WIRING: USE UL LISTED, STRANDED,
TWISTED PAIR, OVERALL FOIL SHIELD WITH
STRANDED DRAIN WIRE SUITABLE FOR RS485
EQUIVALENT TO:
(STANDARD 80°C) BELDEN 9842 OR 9829
OR ALPHA 8223C OR 8222C
(PLENUM RATED) BELDEN 98729 OR 82729
OR ALPHA 9882

PROJECT NAME:		DIAGRAM	
WIRING		300 SERIES (33ATS/33NTS) 3PH 1000-3200 AMPS	
"G" FRAME, GROUP G CONTROLS			
BY	DATE	APPROVED BY	DATE
DESIGNED BY	DATE	CHECKED BY	DATE
APPROVED BY	DATE	APPROVED BY	DATE
PROPERTY OF ASCO POWER TECHNOLOGIES, INC. NOT TO BE REPRODUCED OR TRANSMITTED IN ANY FORM OR BY ANY MEANS, ELECTRONIC OR MECHANICAL, INCLUDING PHOTOCOPYING, RECORDING, OR BY ANY INFORMATION STORAGE AND RETRIEVAL SYSTEM.		COMPUTER GENERATED DRAWING	
SCALE		SIZE	
1001662		DS	
ASCO POWER TECHNOLOGIES, L.P.		PLANNING DEPT., NEW JERSEY 07003-0001	
REV. J		REV. J	
275211		275211	
2 OF 7		2 OF 7	



D

C

B

A

D

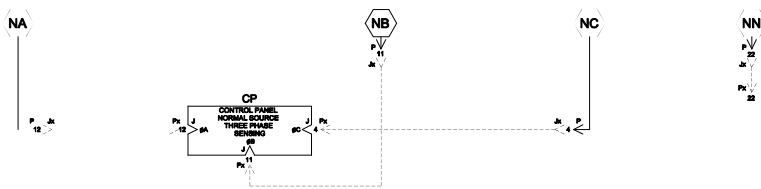
C

B

A

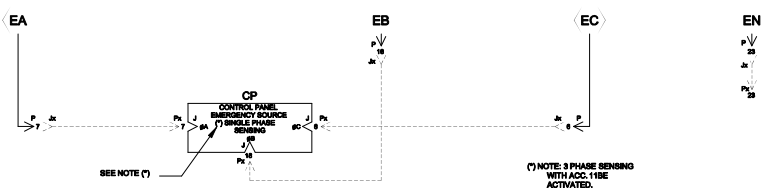
NORMAL SOURCE CIRCUITS

NORMAL



EMERGENCY SOURCE CIRCUITS

EMERGENCY

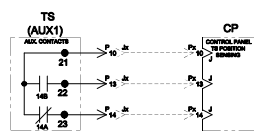


LOAD TERMINAL CIRCUITS

LOAD



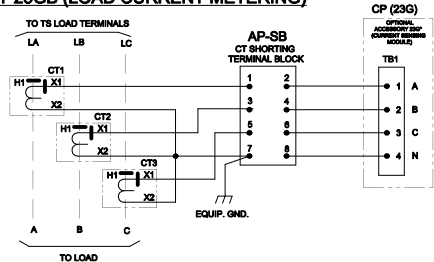
CONTROL SIGNALS & INDICATION



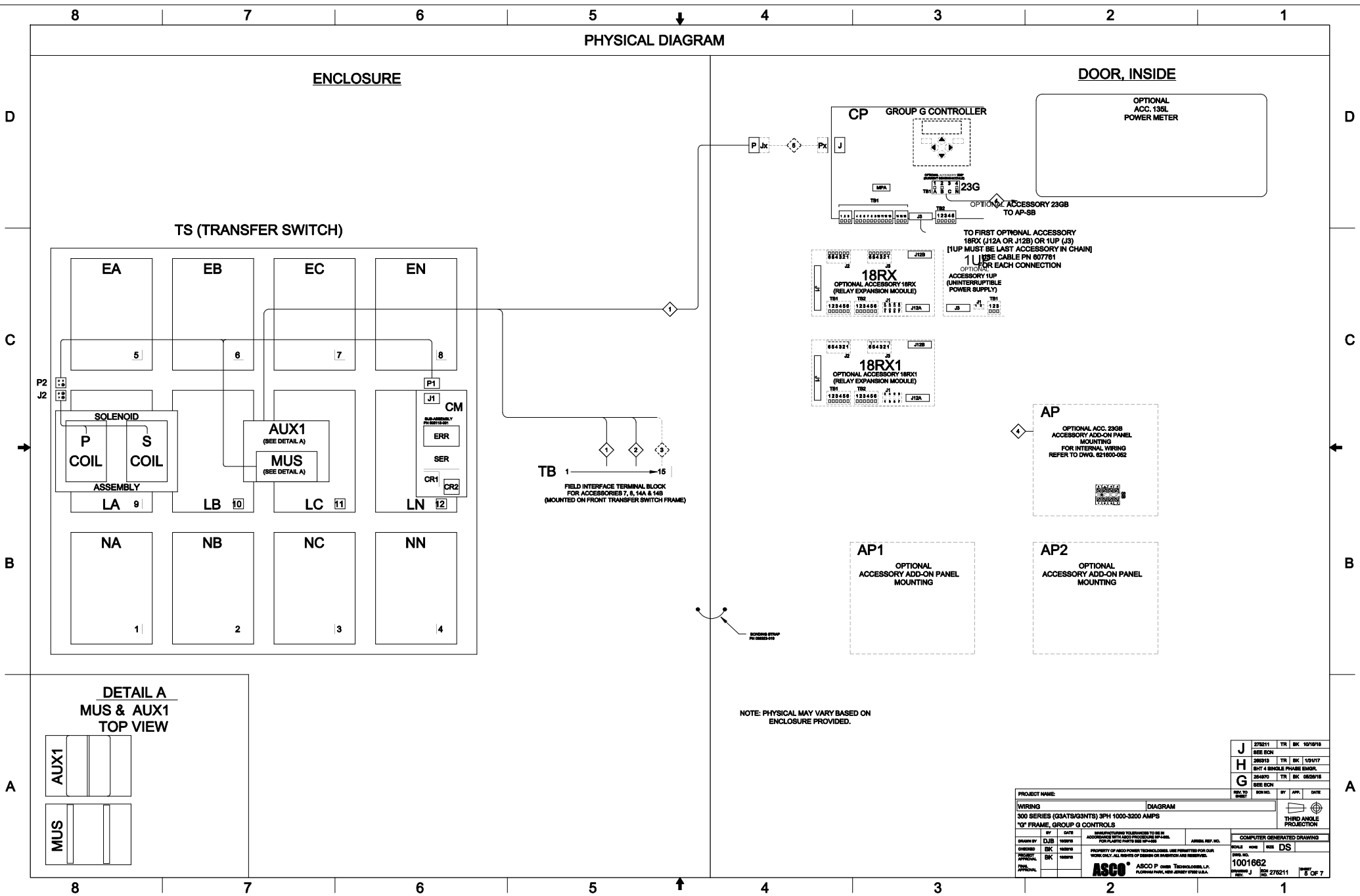
ADDITIONAL CIRCUITS

OPTIONAL ACCESSORY 23GB (LOAD CURRENT METERING)

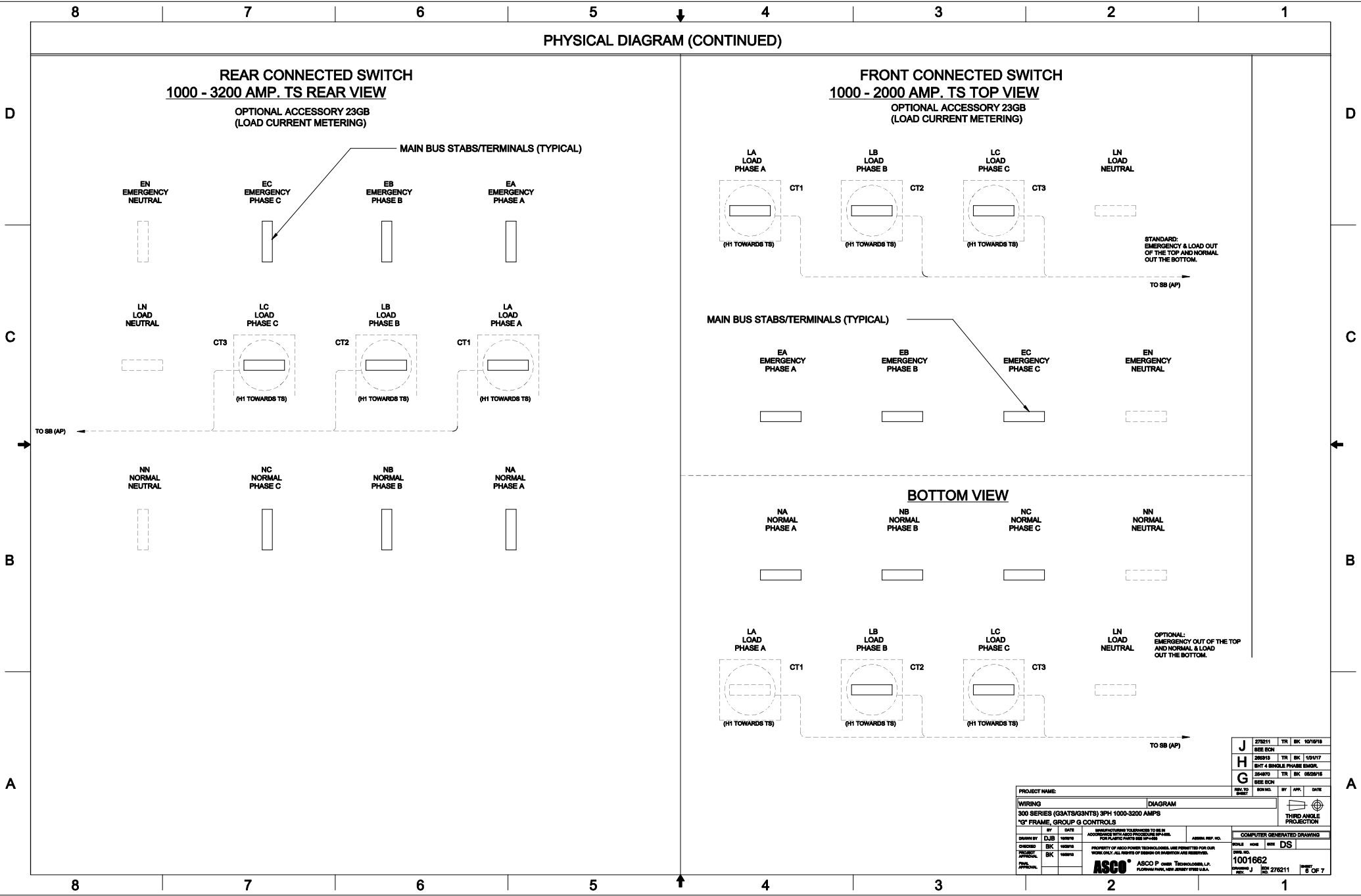
CURRENT TRANSFORMER RATIO TABLE	
SWITCH RATING	CT RATIO
1200A	1200:5A
1500A	1500:5A
1800A	1800:5A
2000A	2000:5A
2500A	2500:5A
3000A	3000:5A
3200A	4000:5A



PROJECT NAME:		WIRING		DIAGRAM	
300 SERIES (G3ATS/G3NTS) 3PH 1000-3200 AMPS					
"G" FRAME, GROUP G CONTROLS					
BY	DATE	MANUFACTURING TO BE IN ACCORDANCE WITH ASCO PAPERWORK FOR PLASTIC PARTS SEE 8P-4000			
DESIGNED BY	DATE	PROPERTY OF ASCO POWER TECHNOLOGIES, LLC. NO REUSE OR REPRODUCTION WITHOUT WRITTEN PERMISSION. WORK ONLY. ALL RIGHTS OF DESIGN OR INVENTION ARE RESERVED.			
CHECKED BY	DATE	ASCO PAPERWORK			
APPROVED BY	DATE	ASCO PAPERWORK			
THIRD ANGLE PROJECTION		COMPUTER GENERATED DRAWING			
SCALE		HIDE		DS	
1001662		1001662		1001662	
REV. 1		REV. 1		REV. 1	
REV. 1		REV. 1		REV. 1	



J	276211	TR	8K	10/18/18
SEE ECU				
H	269213	TR	8K	10/18/17
SHY 4 SINGLE PHASE EMER.				
G	254970	TR	8K	08/28/18
SEE ECU				
REV. TO	DATE	BY	APP.	DATE
PROJECT NAME:	DIAGRAM			
WIRING				
300 SERIES (33ATS/33NTS) 3PH 1000-3200 AMPS				
"G" FRAME, GROUP G CONTROLS				
BY	DATE	MANUFACTURING YOU SHOULD TO BE IN ACCORDANCE WITH ASCO PROTECTABLE PANEL FOR PLASTIC PARTS SEE 8P-438		
DRAWN BY	DJS	10/18/18	ASCO REF. NO.	
CHECKED	BK	10/18/18	PROPERTY OF ASCO POWER TECHNOLOGIES, LLC. THIS DRAWING IS THE PROPERTY OF ASCO. WORK ONLY. ALL RIGHTS OF DESIGN OR INVENTION ARE RESERVED.	
APPROVED	BK	10/18/18	ASCO P. OVER TECHNOLOGIES, L.P. PLASMAR PARK, NEW JERSEY 07093-5000	
FINAL APPROVAL			COMPUTER GENERATED DRAWING	
SCALE		1001662	DATE	DS
DRAWN BY		1001662	DATE	DS
CHECKED		1001662	DATE	DS
APPROVED		1001662	DATE	DS
FINAL APPROVAL		1001662	DATE	DS



PROJECT NAME:				DIAGRAM			
WIRING				300 SERIES (3GATS/3GNTS) 3PH 1000-3200 AMPS			
"G" FRAME, GROUP G CONTROLS				THIRD ANGLE PROJECTION			
BY	DATE	MANUFACTURING TOLERANCES TO BE AS SHOWN UNLESS OTHERWISE SPECIFIED.		ASSEMBLY REF. NO.		COMPUTER GENERATED DRAWING	
DRAWN BY	DJS	10/10/10	PROPERTY OF ASCO POWER TECHNOLOGIES, L.P. NO REUSE OR REPRODUCTION WITHOUT WRITTEN PERMISSION OF ASCO POWER TECHNOLOGIES, L.P.		SCALE		DS
CHECKED	BK	10/10/10	WORK ONLY: ALL RIGHTS OF DESIGN OR INVENTION ARE RESERVED.		DWG. NO.		1001682
DESIGNED	BK	10/10/10	ASCOT P. OVER TECHNOLOGIES, L.P.		REV.		1
APPROVAL	BK	10/10/10	ASCOT P. OVER TECHNOLOGIES, L.P.		REV.		5 OF 7
DATE	10/10/10	ASCOT P. OVER TECHNOLOGIES, L.P.		REV.		1001682	
DATE	10/10/10	ASCOT P. OVER TECHNOLOGIES, L.P.		REV.		1001682	

DCBDCBA