

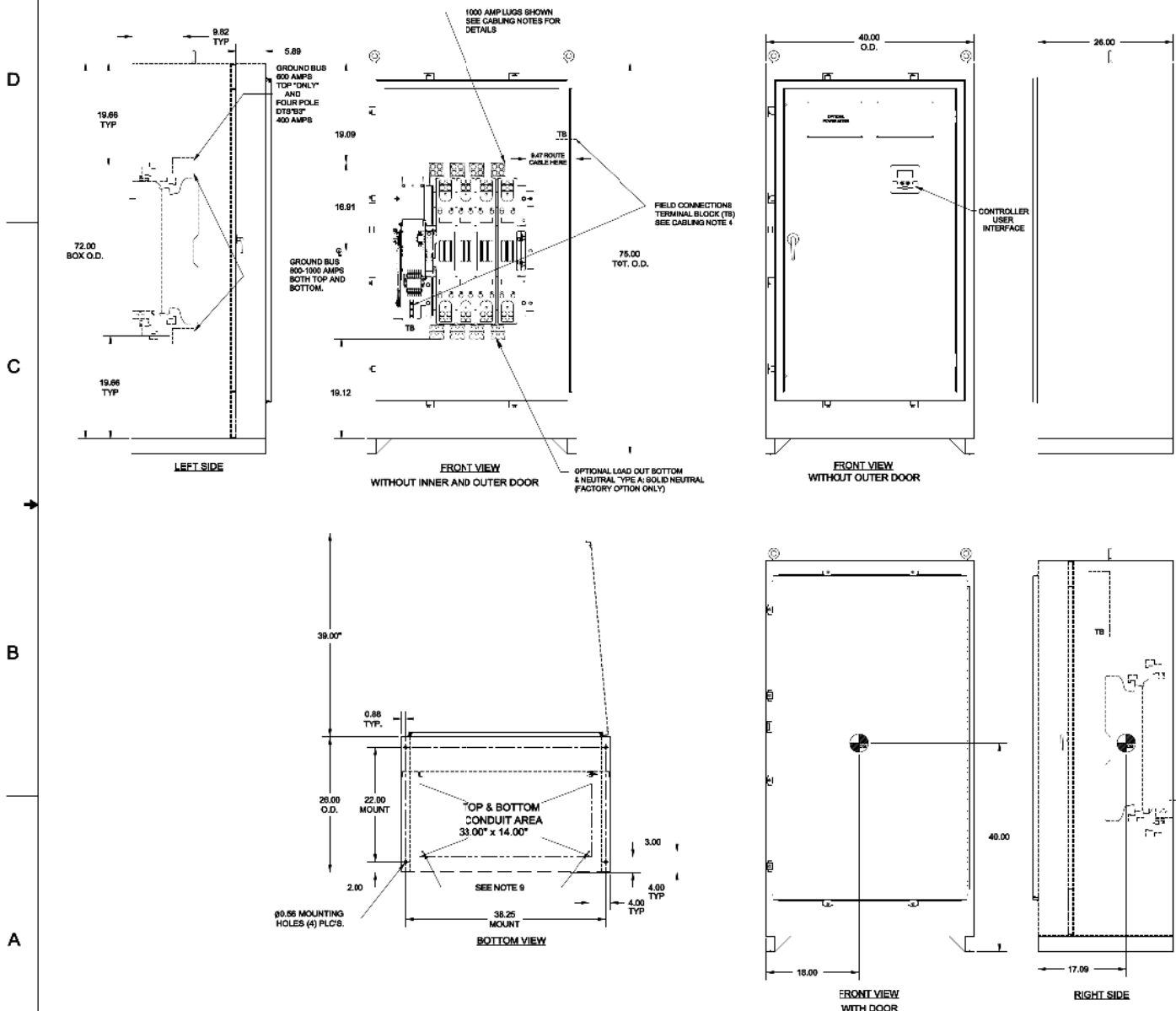
Transfer Switch Details

Transfer Switch Details

| #10 | ATS | AMPS: 0800 | QTY: 2 |
|---|--|--------------------------|---|
| Product | : Series 300 | Catalog Number | : H03ATSB30800CGXM |
| Service Voltage / Hz | : 208V/60Hz | Optional Accessories | : 11BE,44G |
| Bypass Isolation | : Not Applicable | Product Description | : 300 Series, Automatic Open Transition Transfer Switch |
| No. of Switched Poles: 4 | : 4 | Neutral Configuration | : Switched [B] |
| Withstand Rating: | : See WCR Table Below | No. of Cables & Lug Size | : 4, 1/0 AWG to 600 MCM |
| Frame = H, Switch Rating = 0800, Series = 300 | | | |
| Enclosure | : 3R(M)-UL Type 3R secure double door enclosure (See Disclaimer 3) | Service | : Three Phase, 4-wire |
| Extended Warranty | : Not Included | Markings | : |

| # | ACCESSORY DESCRIPTIONS | |
|---|------------------------|---|
| | Accessory Code | Description |
| 1 | 11BE | Adds the following features to the Group G controller: (1) Serial RS-485 Modbus Communications (2) Multi-Schedule Engine Exerciser (3) a 300 Entry Event Log and (4) a common alarm output function. When applied on 3-phase systems it also enables: (1) 3-Phase Emergency Source VLL sensing (2) Phase Rotation Monitoring (3) Emergency Source VLL Unbalance Monitoring. |
| 2 | 44G | Strip heater w/ thermostat, wired to load terminals: 208-600 volts |

OUTLINE FOR ASCO SERIES 600-1000 AMPERE "H" FRAME (3ATS,3ACTS,3ADTS) FRONT CONNECTED TRANSFER SWITCHES TYPE 3R, 4, 4X, 12 SECURE ENCLOSURE



GENERAL NOTES

- TYPE 3R/4X/12 ENCLOSURE, FREE STANDING, FLOOR MOUNTED, DODGE GAUGE CONSTRUCTION.
- DOOR HINGED ON RIGHT SIDE, DOOR CLAMPS AND LOCKABLE HAMP ON LEFT SIDE.
- STANDARD FINISH TYPE 3R/4X/12: ANSI 61 GRAY, POLYESTER POWDER STANDARD. TYPE 4X FINISH UNPAINTED BRUSHED STAINLESS STEEL. OTHER ANSI COLORS AVAILABLE CONSULT FACTORY.
- RECOMMENDED CLEARANCES:
 FRONT: 40 INCHES
 1. A 21% RATED GROUND BUS IS PROVIDED.
 2. UNIT IS DESIGNED FOR COMBINATION TOP AND BOTTOM CABLE ENTRY. THE STANDARD SWITCH CONFIGURATION IS FOR TOP LUGS EMERGENCY AND LOAD AND BOTTOM LUGS NORMAL. OPTIONALLY, THE SWITCH MAY BE SUPPLIED WITH REVERSE NORMAL & EMERGENCY LUGS. (REFER TO THE WIRING DIAGRAM FURNISHED WITH EACH TRANSFER SWITCH TO DETERMINE TERMINATION POSITIONS).
- NEUTRAL CONFIGURATIONS:
 AN OPTIONAL FULL RATED NEUTRAL CONFIGURATION FOR EACH SOURCE AND THE LOAD MAY BE PROVIDED, WHEN EQUIPPED IT IS IN ONE OF THE FOLLOWING FORMATS AS SPECIFIED BY THE CATALOG NUMBER NO. NEUTRAL TYPE:
 (A) SOLID (COPPER BUS) NEUTRAL
 (B) SWITCHED NEUTRAL POLE
- CENTER OF GRAVITY.
- REMOVE BOTTOM KNOCKOUTS FOR TYPE 3R.

CABLING NOTES

- ALL SIZES SUPPLIED STANDARD WITH MECHANICAL (SCREW TYPE) LUGS. (SEE AMP SIZE BELOW)
 A. LUG MATERIAL: ALUMINUM ALLOY 6061-T6 WITH ELECTRO TIN PLATED FINISH.
 B. SCREW MATERIAL: ALUMINUM ALLOY 6062-T6 WITH ELECTRO TIN PLATED FINISH.
 C. UL LISTED, CSA CERTIFIED.
 D. LUG SCREW TIGHTENING TORQUE PER UL 486B: 19 FT-LBS.
 E. SUITABLE WIRE BENDING SPACE IS PROVIDED. (SEE AMP SIZE BELOW)
 2. CONSULT FACTORY FOR OTHER TERMINATION REQUIREMENTS.
 3. GROUND LUGS ARE PROVIDED STANDARD AS FOLLOWS. (SEE AMP SIZE BELOW).
 4. CUSTOMER TERMINAL BLOCKS:
 FOR ALL 300 SERIES 3ADTS, 3ADTS UNITS THE TB WILL BE MOUNTED ON THE UPPER RIGHT INSIDE OF ENCLOSURE.
 FOR ALL 3ATS AND 3NTS UNITS TB WILL BE MOUNTED ON THE TRANSFER SWITCH FRAME AS INDICATED.

NOTES 600 AMP SWITCHES

- SUPPLIED WITH STANDARD MECHANICAL (SCREW TYPE) LUGS ON THE NORMAL, EMERGENCY & LOAD BUS STABS, ONE (1) LUG PER PHASE AND NEUTRAL EACH SUITABLE FOR CONNECTION OF TWO (2) 1/2" 600MCM CU AL CABLE.
 A. SUITABLE WIRE BENDING SPACE IS PROVIDED FOR UP TO TWO (2) 600MCM CABLES PER TERMINAL PER NEC.
 2. GROUND LUGS ARE PROVIDED STANDARD AS FOLLOWS:
 (1) 1/2" - 750MCM CU AL CABLE CONNECTIONS.

NOTES 800-1000 AMP SWITCHES

- SUPPLIED WITH STANDARD MECHANICAL (SCREW TYPE) LUGS ON THE NORMAL, EMERGENCY & LOAD BUS STABS, ONE (1) LUG PER PHASE AND NEUTRAL EACH SUITABLE FOR CONNECTION OF FOUR (4) 1/2" 750MCM CU AL CABLE.
 A. SUITABLE WIRE BENDING SPACE IS PROVIDED FOR UP TO FOUR (4) 800MCM CABLES PER TERMINAL PER NEC.
 2. GROUND LUGS ARE PROVIDED STANDARD AS FOLLOWS:
 (1) 1/2" - 750MCM CU AL CABLE CONNECTIONS.

NOTES 400A (ADTS)"E3" 4 POLE ONLY

- GROUND LUGS ARE PROVIDED STANDARD AS FOLLOWS:
 (1) 1/2" - 750MCM CU AL CABLE CONNECTIONS.

APPROXIMATE SHIPPING WEIGHT, LBS (KG)

| SWITCH RATING (AMPS) | POLES | WEIGHTS LB (KG) |
|----------------------|-------|-----------------|
| 600,800 | 2 | 569 (258) |
| 600,800 | 3 | 592 (269) |
| 1000 | 2 | 581 (264) |
| 1000 | 3 | 610 (277) |
| 1000 | 4 | 639 (290) |

| | | | | |
|---|-------|----|----|-------|
| B | 27978 | WN | SK | 27978 |
| A | 27941 | BD | FN | |
| | 27941 | TR | SK | |
| | 27941 | TR | SK | |

PROJECT NAME: _____
 OUTLINE
 300 SERIES 72x40x28
 "H" FRAME 600-1000 AMP, TYPE 4X/12 SECURE ENCLOSURES

DATE: 07/19/18
 DRAWN BY: DLS
 CHECKED BY: BK
 PROJECT APPROVAL: BK

MANUFACTURED TO SPECIFICATIONS OF THE NATIONAL ELECTRICAL MANUFACTURERS ASSOCIATION (NEMA) AND THE INTERNATIONAL ELECTRICITY CONSTRUCTION CODE (IECC).
 PROPERTY OF ASCO POWER TECHNOLOGIES, INC. ALL RIGHTS RESERVED.
 NORE ONLY ALL RIGHTS OF DESIGN OR INVENTION ARE RESERVED.

COMPUTER GENERATED DRAWINGS
 SCALE: 1/8" = 1'-0"
 DWG. NO.: 1001394-006
 SHEET: 1 OF 1

8

7

6

5

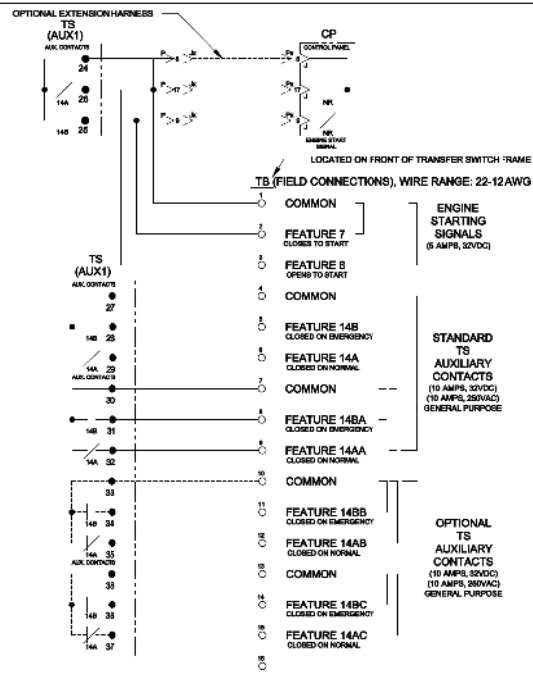
4

3

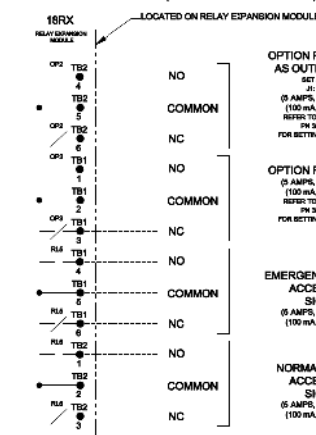
2

1

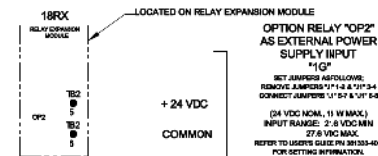
FIELD CONNECTIONS



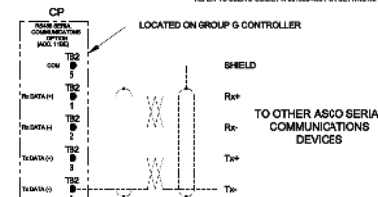
OPTIONAL ACCESSORY 18RX (RELAY EXPANSION MODULE)



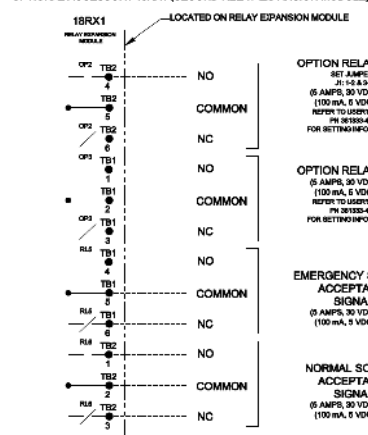
"OP2" OPTIONAL USES



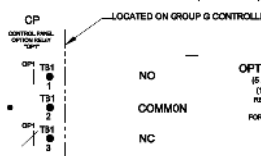
RS485 SERIAL COMMUNICATIONS OPTION



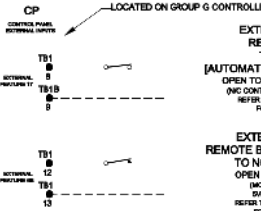
OPTIONAL ACCESSORY 18RX1 (SECOND RELAY EXPANSION MODULE)



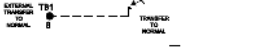
CONTROLLER OPTION RELAY "CP1" (STANDARD)



CONTROLLER REMOTE CONTROL FEATURES



EXTERNAL MANUAL TRANSFER REMOTE TRANSFER TO NORMAL OR EMERGENCY (NON-AUTOMATIC TRANSFER TYPE ONLY)



| | | | | |
|---|-------|-----|-----|--------|
| G | 27526 | TR | SK | 042519 |
| F | 27521 | TR | SK | 101818 |
| E | 28513 | TR | SK | 041015 |
| D | 28442 | AE | SK | |
| C | 24772 | SDH | SKH | 471474 |
| B | 24635 | AE | SK | 010174 |
| A | 24669 | SK | SK | 152513 |
| | 24635 | AE | SK | 152513 |
| | 18546 | | | |

PROJECT NAME: _____

WIRING: _____

300 SERIES (H&S) (H&S) 3PH 80-1200 AMPS

"H" FRAME, GROUP G CONTROLS

DATE: _____

BY: _____

CHECKED: _____

DESIGNED: _____

APPROVED: _____

COMPUTER GENERATED DRAWINGS

SCALE: _____

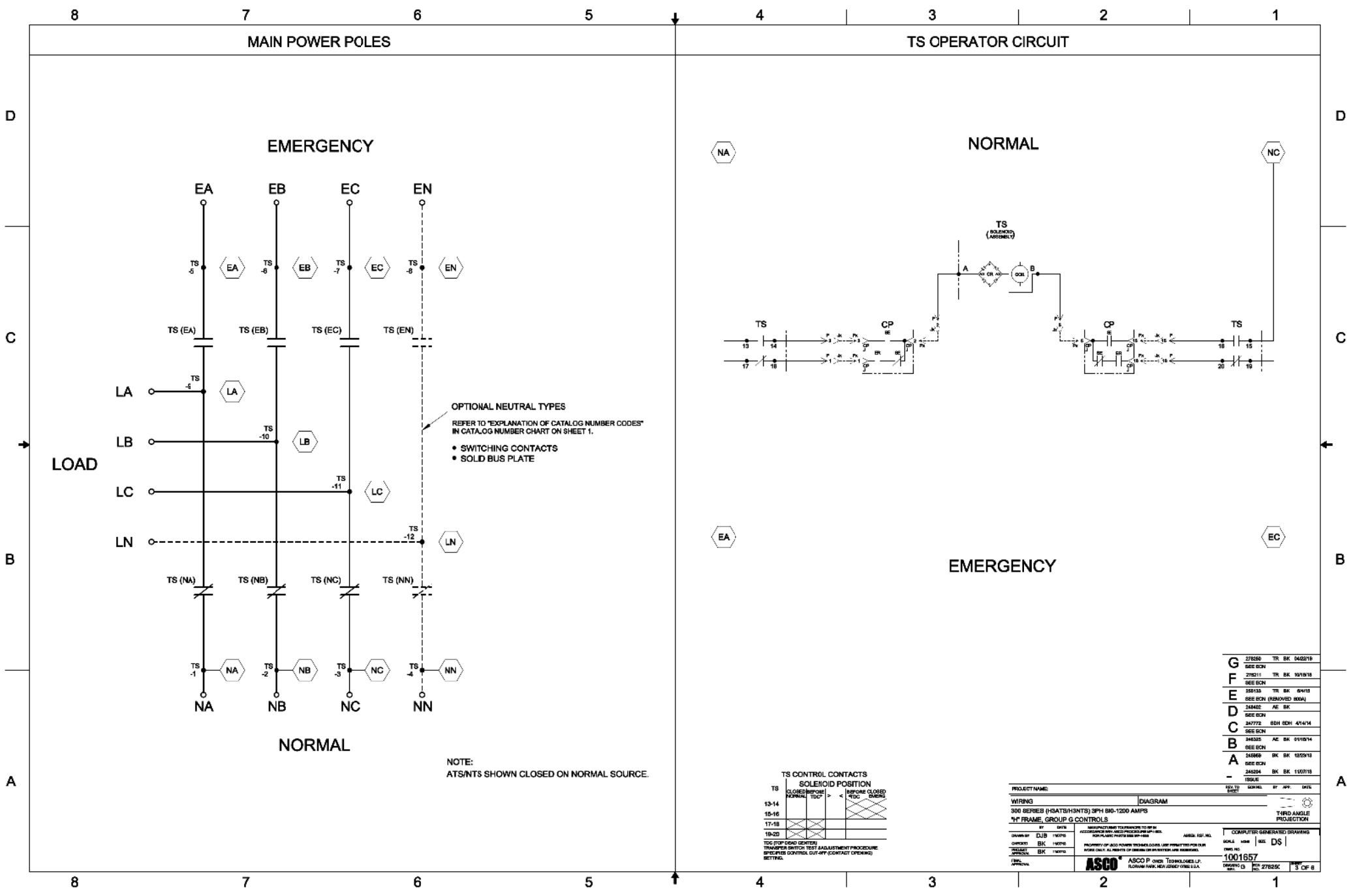
DATE: _____

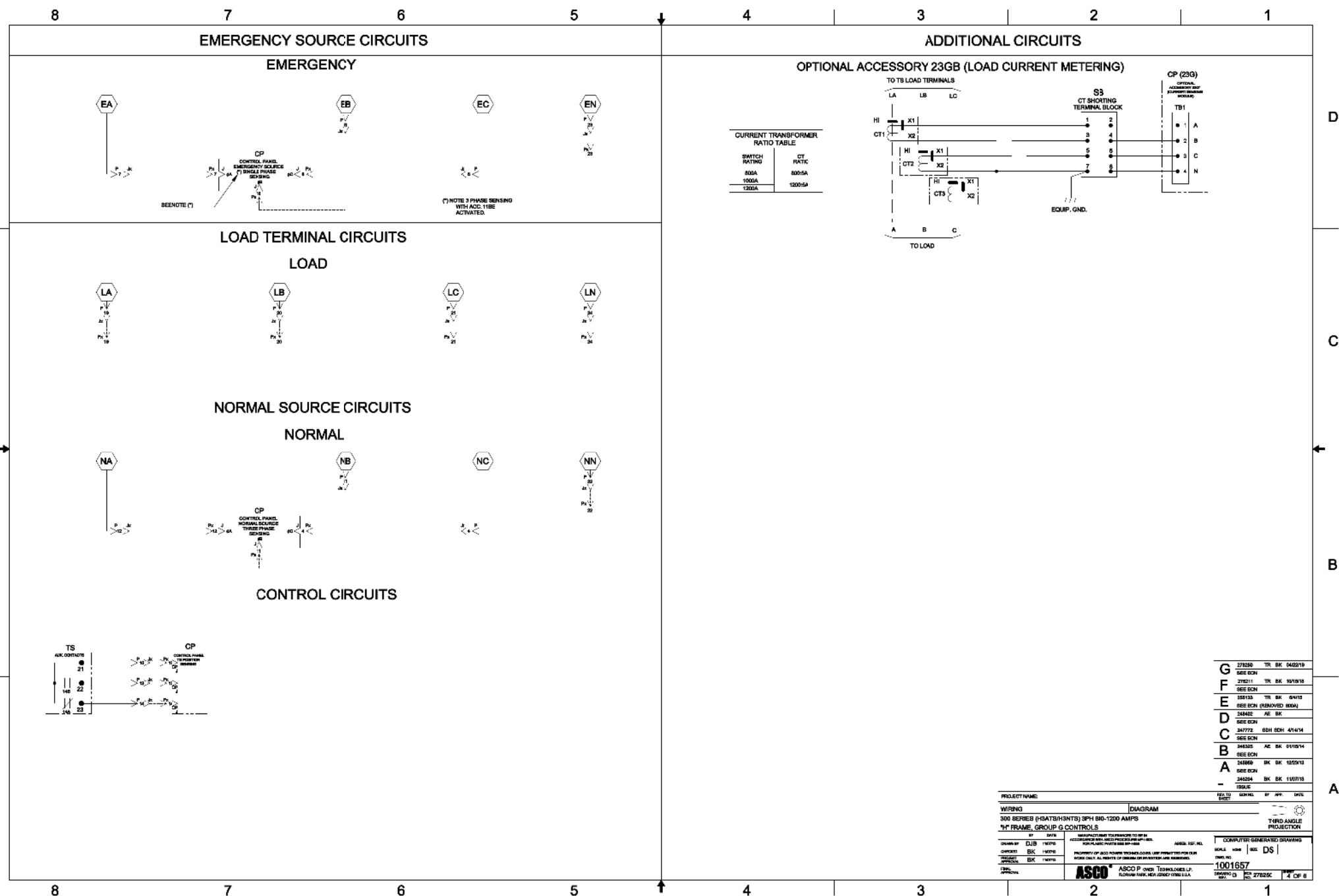
1001657

ASCO P.O. BOX 278296

FLORHAM PARK, NEW JERSEY 07931-2926

2 OF 8



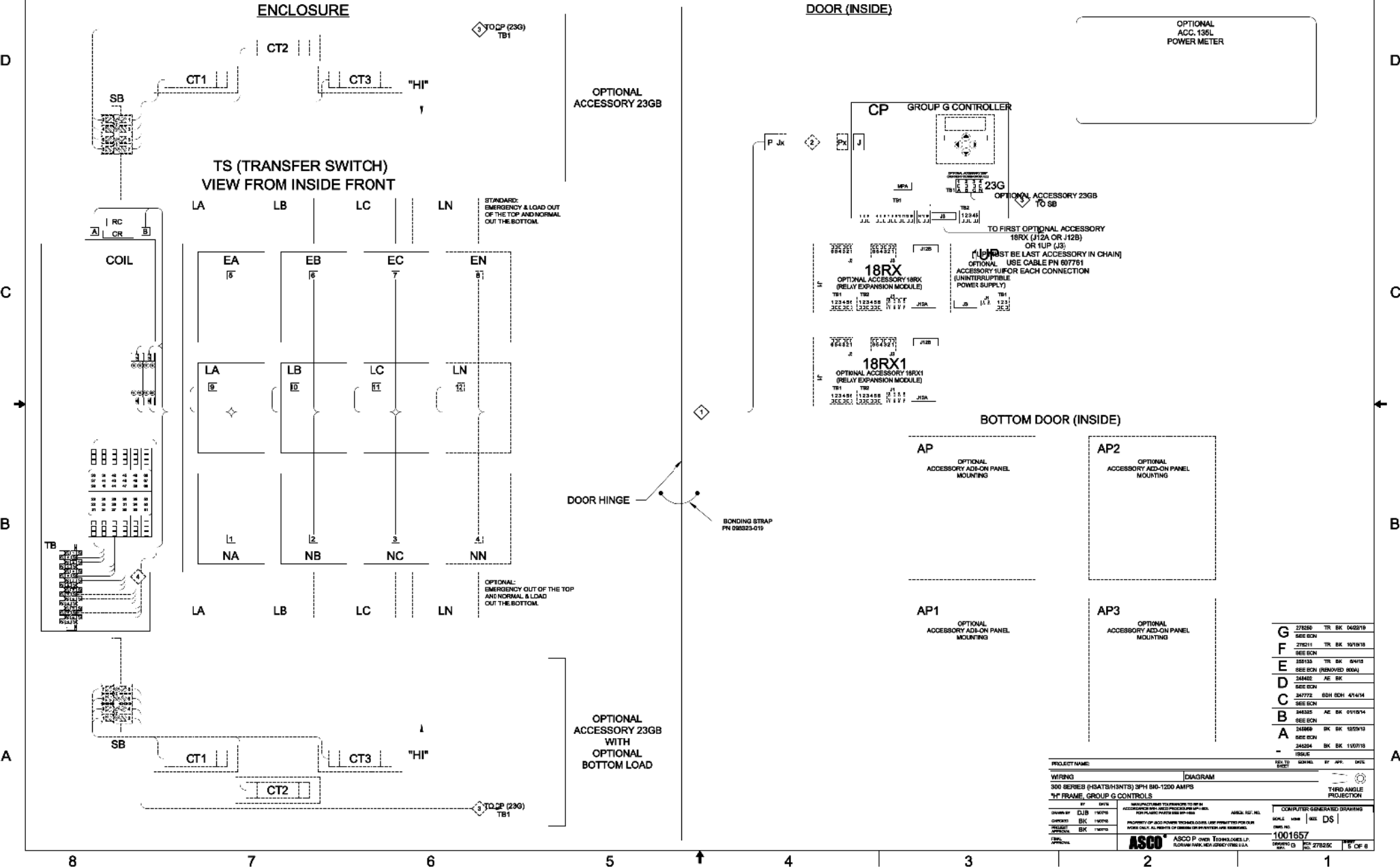


PHYSICAL DIAGRAM

ENCLOSURE

DOOR (INSIDE)

TS (TRANSFER SWITCH) VIEW FROM INSIDE FRONT



| | | | | |
|---|-------|----|----|--------|
| G | 27620 | TR | SK | 042519 |
| F | 27621 | TR | SK | 042519 |
| E | 27622 | TR | SK | 042519 |
| D | 27623 | TR | SK | 042519 |
| C | 27624 | TR | SK | 042519 |
| B | 27625 | TR | SK | 042519 |
| A | 27626 | TR | SK | 042519 |

| | | | | |
|-----------------------------|---|------------|-------|------|
| PROJECT NAME: | DIAGRAM | DATE: | BY: | CHK: |
| WIRING: | 300 SERIES (H4T5H3NTS) 3PH 80-1200 AMPS | | | |
| "H" FRAME, GROUP G CONTROLS | | | | |
| DESIGNED BY: | DATE: | REVISIONS: | DATE: | BY: |
| CHECKED BY: | DATE: | REVISIONS: | DATE: | BY: |
| APPROVED BY: | DATE: | REVISIONS: | DATE: | BY: |
| ASCO | ASCO POWER TECHNOLOGIES, L.P. | 1001657 | | |
| | FLOOR PLAN (N.B. NOT A SCALE DRAWING) | | | |

5 ↓

| HARNESSE LOCATOR | | DATE INITIALED | DATE RECEIVED |
|------------------|----------------------------------|-------------------|------------------|
| WIRE NO. | HARNESSES 1739082 (P) MAIN TS | CLR | AWG |
| 1 | 17-15-TB-16 | | 16 |
| 2 | 3 P-2,TS-A | | |
| 3 | 3 P-3,TS-B | | |
| 4 | 17-14-TB-3 | | |
| 5 | 4 TB-3,TS-B | | |
| 6 | 6 P-6-TB-4 | | |
| 7 | 6 P-6,TS-7 | | |
| 8 | 6 TS-7,TS-19 | | |
| 9 | 7 TS-7,TS-9 | | |
| 10 | 7 TS-5,TS-17 | | |
| 11 | 8 P-8-TB-26 | | |
| 12 | 8 TS-24-TB-1 | | |
| 13 | 8 TS-24-TB-2 | | |
| 14 | 9 TS-26-TB-2 | | |
| 15 | 10 P-10,TS-21 | | |
| 16 | 11 P-11,TS-2 | | |
| 17 | 12 P-12,TS-3 | | |
| 18 | 13 TS-15-TB-18 | | |
| 19 | 13 P-13,TS-22 | | |
| 20 | 14 P-14,TS-23 | | |
| 21 | 15 P-15,TS-16 | | |
| 22 | 16 P-16,TS-20 | | |
| 23 | 17 P-17,TS-3 | | |
| 24 | 18 P-18,TS-9 | | |
| 25 | 19 P-19,TS-4 | | |
| 26 | 20 P-20,TS-10 | | |
| 27 | 21 P-21,TS-41 | | |
| 28 | 22 P-22,TS-3 | | |
| 29 | 23 P-23,TS-19 | | |
| 30 | 24 P-24,TS-42 | | |
| 31 | 25 TS-27-TB-4 | | |
| 32 | 26 TS-28-TB-7 | | |
| 33 | 27 TS-29-TB-6 | | |
| 34 | | | |
| 35 | | | |
| 36 | | | |
| 37 | | | |
| 38 | | | |
| 39 | | | |
| 40 | | | |
| 41 | | | |
| 42 | | | |
| 43 | | | |
| 44 | | | |
| 45 | | | |
| 46 | | | |
| 47 | | | |
| 48 | | | |
| 49 | | | |
| 50 | | | |
| 51 | | | |
| 52 | | | |
| 53 | | | |
| 54 | | | |
| 55 | | | |
| 56 | | | |
| 57 | | | |
| 58 | | | |
| 59 | | | |
| 60 | | | |
| 61 | | | |
| 62 | | | |
| 63 | | | |
| 64 | | | |
| 65 | | | |
| 66 | | | |
| 67 | | | |
| 68 | | | |
| 69 | | | |
| 70 | | | |
| 71 | | | |
| 72 | | | |
| 73 | | | |
| 74 | | | |
| 75 | | | |
| 76 | | | |
| 77 | | | |
| 78 | | | |
| 79 | | | |
| 80 | | | |
| 81 | | | |
| 82 | | | |
| 83 | | | |
| 84 | | | |
| 85 | | | |
| 86 | | | |
| 87 | | | |
| 88 | | | |
| 89 | | | |
| 90 | | | |
| 91 | | | |
| 92 | | | |
| 93 | | | |
| 94 | | | |
| 95 | | | |
| 96 | | | |
| 97 | | | |
| 98 | | | |
| 99 | | | |
| 100 | | | |

| HARNESS LOCATOR | | DISCONNECT POINTS | |
|-----------------|--|----------------------|-----|
| WIRE | HARNESS 300020-000 NO. (PLA) OPTIONAL EXTENSION HARNESS | CLR | AMG |
| 1 | P4-1,Pin-1 | | 18 |
| 2 | P4-2,Pin-2 | | |
| 3 | P4-3,Pin-3 | | |
| 4 | P4-4,Pin-4 | | |
| 5 | P4-5,Pin-5 | | |
| 6 | P4-6,Pin-6 | | |
| 7 | P4-7,Pin-7 | | |
| 8 | P4-8,Pin-8 | | |
| 9 | P4-9,Pin-9 | | |
| 10 | P4-10,Pin-10 | | |
| 11 | P4-11,Pin-11 | | |
| 12 | P4-12,Pin-12 | | |
| 13 | P4-13,Pin-13 | | |
| 14 | P4-14,Pin-14 | | |
| 15 | P4-15,Pin-15 | | |
| 16 | P4-16,Pin-16 | | |
| 17 | P4-17,Pin-17 | | |
| 18 | P4-18,Pin-18 | | |
| 19 | P4-19,Pin-19 | | |
| 20 | P4-20,Pin-20 | | |
| 21 | P4-21,Pin-21 | | |
| 22 | P4-22,Pin-22 | | |
| 23 | P4-23,Pin-23 | | |
| 24 | P4-24,Pin-24 | | |
| REMOVE WIRES | | | |
| ADD WIRES | | | |

[illegible][illegible]

| WIRE No. | ADDITIONAL WIRES | CLR | AW |
|-------------|------------------|-----|----|
| | | | 18 |

| | | | | |
|---|-------------------------|-----|-----|----------|
| G | 278260 | TR | BK | 04/22/18 |
| | SEE ECRN | | | |
| F | 278211 | TR | BK | 10/18/18 |
| | SEE ECRN | | | |
| E | 355133 | TR | BK | 6/4/15 |
| | SEE ECRN (REMOVED 800A) | | | |
| D | 244402 | AE | BK | |
| | SEE ECRN | | | |
| C | 247772 | SDH | SDH | 4/14/14 |
| | SEE ECRN | | | |
| B | 244325 | AE | BK | 01/15/14 |
| | SEE ECRN | | | |
| A | 244666 | BK | BK | 12/29/13 |
| | SEE ECRN | | | |
| - | 245254 | BK | BK | 11/07/13 |
| | 1804UE | | | |

| | | | | | | |
|--|--|--|--|--|--|---|
| PROJECT NAME: | <div style="border: 1px solid black; padding: 2px; display: inline-block;"> DIAGRAM </div> | | <div style="border: 1px solid black; padding: 2px; display: inline-block;"> REV. 1.0 </div> | <div style="border: 1px solid black; padding: 2px; display: inline-block;"> SCALE </div> | <div style="border: 1px solid black; padding: 2px; display: inline-block;"> BY: APL </div> | <div style="border: 1px solid black; padding: 2px; display: inline-block;"> DATE </div> |
| WIRING | | | | | | |
| 300 SERIES (HSAT3/HINT3) 3PH 600-1200 AMPS | | | | | | |
| "I" FRAME, GROUP G CONTROLS | | | | | | |
| <div style="border: 1px solid black; padding: 2px; display: inline-block;"> DESIGNED BY: </div> | <div style="border: 1px solid black; padding: 2px; display: inline-block;"> BY: </div> | | <div style="border: 1px solid black; padding: 2px; display: inline-block;"> TYPED AND PROJECTED </div> | | | |
| *SEE ADDENDUM FOR ALL PROJECTS AND ALL SPECIFICATIONS. | | | | | | |
| <div style="border: 1px solid black; padding: 2px; display: inline-block;"> CHECKED BY: </div> | <div style="border: 1px solid black; padding: 2px; display: inline-block;"> BK </div> | | <div style="border: 1px solid black; padding: 2px; display: inline-block;"> ASICO, INC. (SCL) </div> | | | |
| *PROPERTY OF OWNER. REPRODUCED ORAL PERMISSION FOR OTHER USES. *FOR INFORMATION OF OWNER, THIS PROJECT WAS DESIGNED BY THE COMPANY. | | | | | | |
| <div style="border: 1px solid black; padding: 2px; display: inline-block;"> APPROVED BY: </div> | <div style="border: 1px solid black; padding: 2px; display: inline-block;"> BK </div> | | <div style="border: 1px solid black; padding: 2px; display: inline-block;"> DATE: </div> | | | |
| <div style="text-align: center;"> ASCO </div> | | | | | | |
| ASCO POWER TECHNOLOGIES, L.P. 11000 W. 11TH AVE., SUITE 100, DALLAS, TX 75243 | | | | | | |
| <div style="text-align: right;"> 1001657 </div> | | | | | | |
| <div style="border: 1px solid black; padding: 2px; display: inline-block;"> DRAWING NO. </div> | | | <div style="border: 1px solid black; padding: 2px; display: inline-block;"> 27252C </div> | | | |
| <div style="text-align: right;"> 1 OF 8 </div> | | | | | | |