

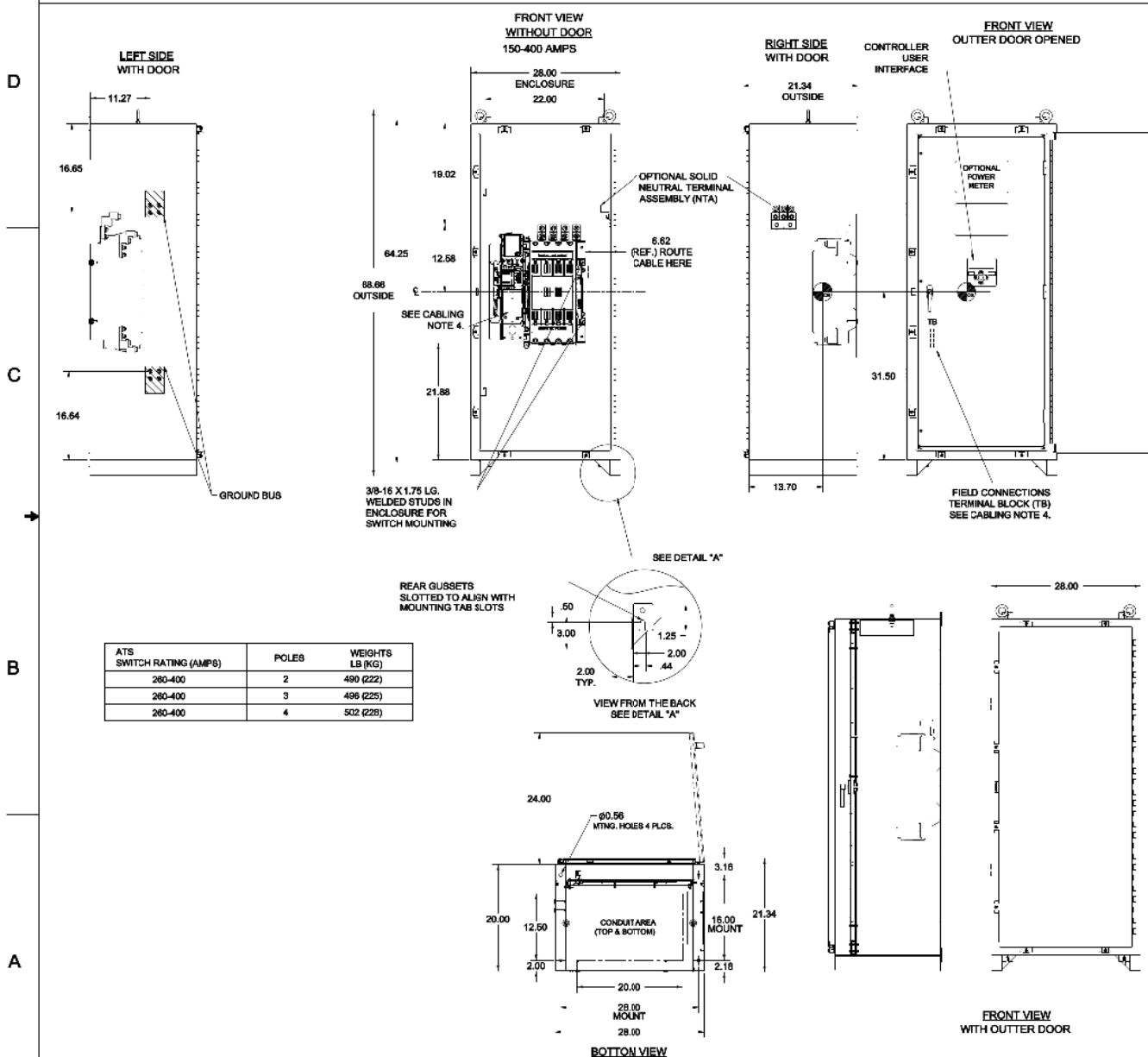
Transfer Switch Details

Transfer Switch Details

#7	ATS	AMPS: 0400	QTY: 2
Product	: Series 300	Catalog Number	: J03ATSB30400NGXM
Service Voltage / Hz	: 480V/60Hz	Optional Accessories	: 11BE,18RX,44G
Bypass Isolation	: Not Applicable	Product Description	: 300 Series, Automatic Open Transition Transfer Switch
No. of Switched Poles: 4	: 4	Neutral Configuration	: Switched [B]
Withstand Rating:	: See WCR Table Below	No. of Cables & Lug Size	: 1, #4 AWG to 600 MCM or (2) 1/0 AWG to 250 MCM
Frame = J, Switch Rating = 0400, Series = 300			
Enclosure	: 3R(M)-UL Type 3R secure double door enclosure (See Disclaimer 3)	Service	: Three Phase, 4-wire
Extended Warranty	: Not Included	Markings	:

#	ACCESSORY DESCRIPTIONS	
	Accessory Code	Description
1	11BE	Adds the following features to the Group G controller: (1) Serial RS-485 Modbus Communications (2) Multi-Schedule Engine Exerciser (3) a 300 Entry Event Log and (4) a common alarm output function. When applied on 3-phase systems it also enables: (1) 3-Phase Emergency Source VLL sensing (2) Phase Rotation Monitoring (3) Emergency Source VLL Unbalance Monitoring.
2	18RX	REX (Relay Expansion Module) with Normal and Emergency available output contacts (18B & 18G)
3	44G	Strip heater w/thermostat, wired to load terminals: 208-600 volts

OUTLINE FOR **ASCO** SERIES 260-400 AMPERE "J" FRAME (3ATS,3NTS) FRONT CONNECTED TRANSFER SWITCHES TYPE 3R/4/4X/12 SECURE ENCLOSURE



GENERAL NOTES

- TYPE 3R/4X/12 ENCLOSURE, FREE STANDING, FLOOR OR WALL MOUNTABLE, 14 GAUGE CONSTRUCTION.
- DOOR HINGED ON RIGHT SIDE, LOCKABLE HASP ON LEFT SIDE, DOOR CLAMPS LEFT, TOP, AND BOTTOM.
- FINISH: TYPE 3R/4X/12: ANSI #1 GRAY POLYESTER SEM GLOSS ELECTROSTATIC POWDER.
TYPE 4X (V): EXTERIOR CONSTRUCTED OF CODE GAUGE TYPE 304 STAINLESS STEEL.
TYPE 4X (V): EXTERIOR CONSTRUCTED OF CODE GAUGE TYPE 316 STAINLESS STEEL.
OTHER ANSI COLORS AVAILABLE CONSULT FACTORY UL RECOGNIZED.
- RECOMMENDED CLEARANCES:
FRONT: 24 INCHES
- A 20 % RATED GROUND BUS IS PROVIDED.
- UNIT IS DESIGNED FOR COMBINATION TOP AND BOTTOM CABLE ENTRY. THE STANDARD SWITCH CONFIGURATION IS FOR TOP LUGS EMERGENCY AND LOAD AND BOTTOM LUGS NORMAL.
- A FULL RATED NEUTRAL CONNECTION FOR EACH SOURCE AND THE LOAD IS OPTIONAL, WHEN PROVIDED IT IS IN ONE OF THE FOLLOWING FORMATS AS SPECIFIED BY THE CATALOG NO. NEUTRAL TYPE:
A. SOLID (COPPER BUS) NEUTRAL
B. SWITCHED NEUTRAL POLE
C. CENTER OF GRAVITY.
- WHEN INSTALLING GROUND LUGS TO TYPE 4 ENCLOSURE, REMOVE HARDWARE FROM STUDS AND REMOVE MASKING PLATES TO EXPOSE UNPAINTED SURFACE.

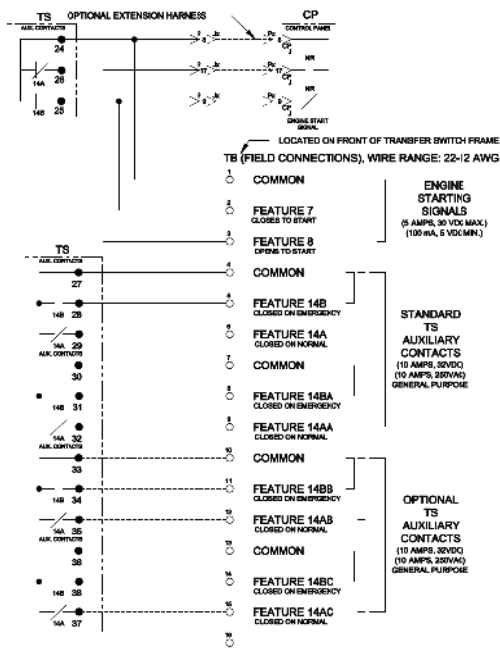
CABLING NOTES

- ALL SIZES SUPPLIED STANDARD WITH MECHANICAL (SCREW TYPE) LUGS. (SEE AMP SIZE BELOW)
A. LUG MATERIAL: ALUMINUM ALLOY 6061-T6 WITH ELECTRO TIN PLATED FINISH.
B. SCREW MATERIAL: ALUMINUM ALLOY 6262-T6 WITH ELECTRO TIN PLATED FINISH.
C. UL LISTED, CSA CERTIFIED.
D. LUG SCREW TIGHTENING TORQUE PER UL 486B: 19 FT-LBS.
E. SUITABLE WIRE BENDING SPACE IS PROVIDED. (SEE AMP SIZE BELOW)
- CONSULT FACTORY FOR OTHER TERMINATION REQUIREMENTS.
- GROUND LUGS ARE PROVIDED STANDARD AS FOLLOWS. (SEE AMP SIZE BELOW)
- CUSTOMER TERMINAL BLOCKS:
THE TB WILL BE MOUNTED ON THE TRANSFER SWITCH FRAME AS INDICATED

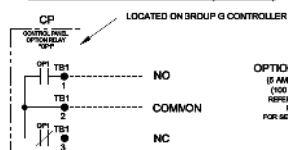
NOTES 260-400 AMP SWITCHES

- SUPPLIED WITH STANDARD MECHANICAL (SCREW TYPE) LUGS ON THE NORMAL, EMERGENCY & LOAD BUS STABS. ONE (1) LUG PER PHASE AND NEUTRAL EACH SUITABLE FOR CONNECTION OF TWO (2) 1/0 - 250MCM CU/AL CABLES OR ONE (1) 4/0 - 40MCM CU/AL CABLE.
A. SUITABLE WIRE BENDING SPACE IS PROVIDED FOR UP TO ONE (1) 600MCM CABLE PER TERMINAL PER NEC.
- GROUND LUGS ARE PROVIDED STANDARD AS FOLLOWS:
SIX (6) 1/0 - 250MCM CU/AL CABLES OR THREE (3) 4/0 - 40MCM CU/AL CABLE CONNECTIONS.

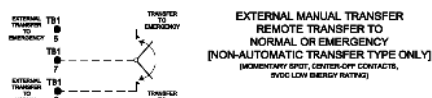
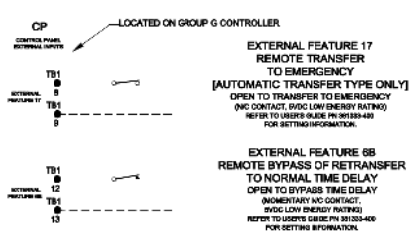
PROJECT NAME: _____		DATE: _____	
COMPOSITE: _____		SCALE: _____	
260-400 AMP 3R/4X/12 SECURED		TWO ANGLE PROJECTION	
DESIGNED BY: SMC	CHECKED BY: BK	APPROVED BY: BK	DATE: 10/13/93
MANUFACTURED TO SPECIFICATION TO BE IN ACCORDANCE WITH THE FOLLOWING STANDARDS: ASME, UL, IEC, NEMA, IEEE, etc.		COMPUTER GENERATED DRAWING	
PROPERTY OF ASCO POWER TECHNOLOGIES, INC. UNLESS OTHERWISE SPECIFIED. NO PARTS OR MATERIALS TO BE USED WITHOUT THE WRITTEN PERMISSION OF ASCO POWER TECHNOLOGIES, INC.		SCALE: 1/8" = 1"	
ASCO P. OVER TECHNOLOGIES, L.P.		1001393-022	
FLOOR MOUNT, NEW JERSEY, U.S.A.		REV: 1	
1 OF 1			



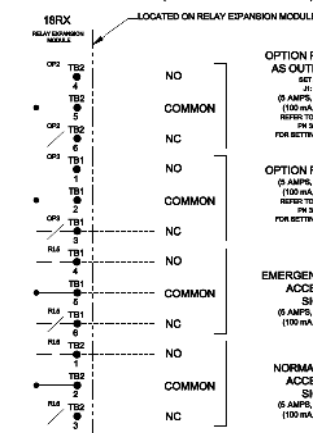
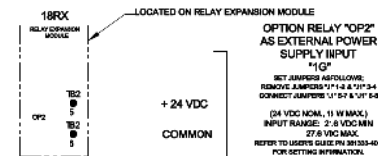
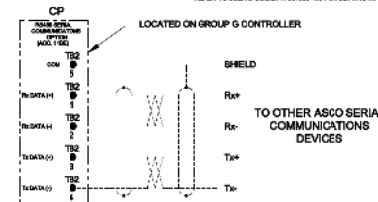
CONTROLLER OPTION RELAY "OP1" (STANDARD)



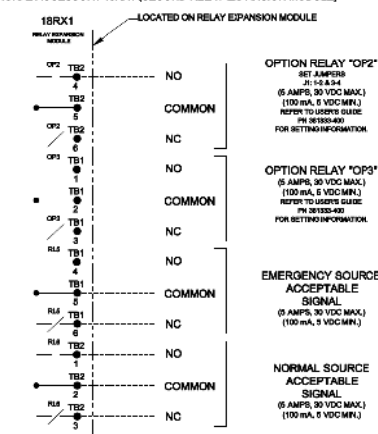
CONTROLLER REMOTE CONTROL FEATURES



OPTIONAL ACCESSORY 18RX (RELAY EXPANSION MODULE)

"OP2"
OPTIONAL
USESRS485 SERIAL COMMUNICATIONS OPTION
AVAILABLE WITH OPTIONAL ACCESSORY 18RX ADVANCED FUNCTION SOFTWARE BURDLE
REFER TO USER'S GUIDE PN 381333-400 FOR SETTING INFORMATION.

OPTIONAL ACCESSORY 18RX1 (SECOND RELAY EXPANSION MODULE)



B 37856 TR BK 0501/18
SEE BCN
A 27021 TR BK 0415/18
SEE BCN
381333 MFA JPB 0501/17
18RX1

PROJECT NAME: _____

WIRING: _____

300 SERIES, 3-Phase, 280 & 400 AMP

"J" FRAME, GROUP G CONTROLS

BY: _____

DATE: _____

REVISION: _____

COMPUTER GENERATED DRAWING

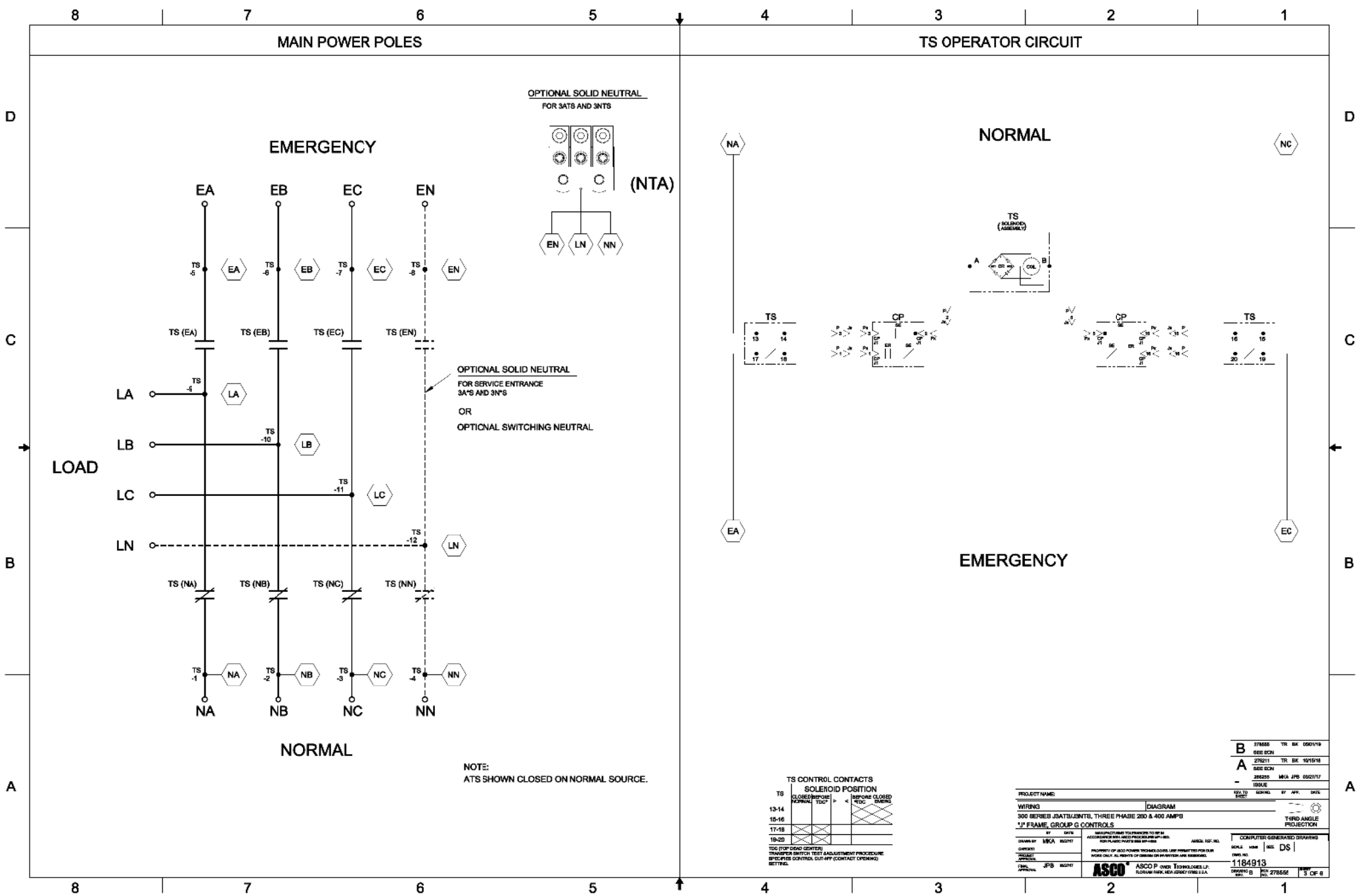
SCALE: _____

DATE: _____

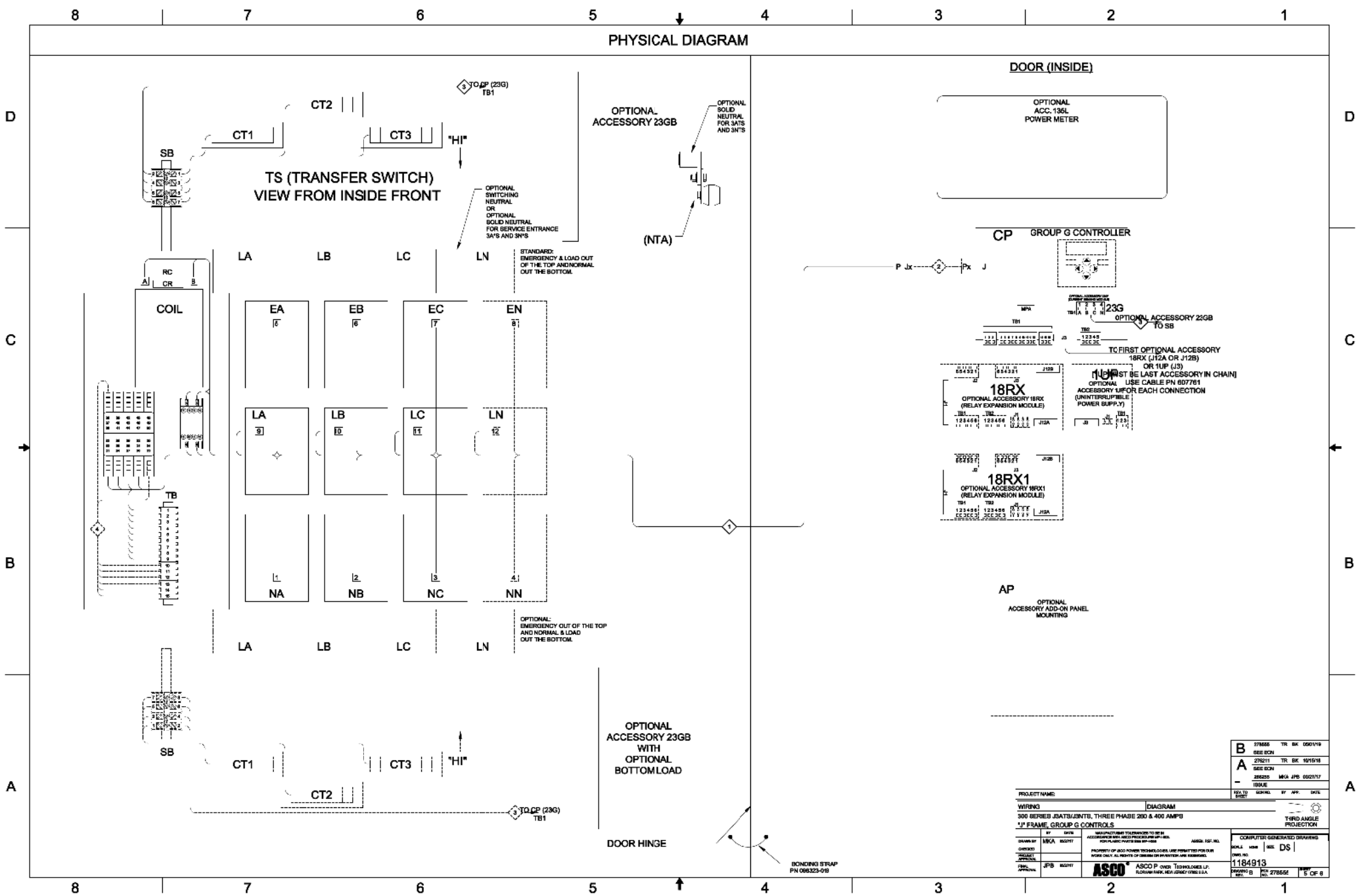
1184913

ASCO P. OVER TOLERANCES L.P.

2 OF 8



PROJECT NAME		1784913	TR	SK	0501/14
WIRING		0501/14	TR	SK	0501/14
300 SERIES 3A/TS/3N/TS, THREE PHASE 280 & 400 AMP		0501/14	TR	SK	0501/14
"J" FRAME, GROUP G CONTROLS		0501/14	TR	SK	0501/14
BY		0501/14	TR	SK	0501/14
CHECKED		0501/14	TR	SK	0501/14
APPROVED		0501/14	TR	SK	0501/14
DATE		0501/14	TR	SK	0501/14
SCALE		0501/14	TR	SK	0501/14
TWO ANGLE PROJECTION		0501/14	TR	SK	0501/14
ASCO		0501/14	TR	SK	0501/14
ASCO P. OVER TECHNOLOGIES, L.P.		0501/14	TR	SK	0501/14
FLORHAM PARK, NEW JERSEY 07831		0501/14	TR	SK	0501/14
1184913		0501/14	TR	SK	0501/14
278556		0501/14	TR	SK	0501/14
3 OF 8		0501/14	TR	SK	0501/14



B	178666	TR	SK	0501/18
	SEE BOM			
A	279211	TR	SK	1815/18
	SEE BOM			
	285255	MFA	JPB	0502/17
	185646			

PROJECT NAME		DIAGRAM	
WIRING 300 SERIES JSATS/JNITS, THREE PHASE 280 & 400 AMP'S			
"J" FRAME, GROUP G CONTROLS			
BY	DATE	MANUFACTURING TOLERANCES TO BE IN ACCORDANCE WITH ASSEMBLY DRAWING AND ASSEMBLY PRACTICES	
DESIGNED BY	APCA	DESIGNED	ASCA
CHECKED BY	APCA	CHECKED	ASCA
PROJECT APPROVAL	JPB	PROJECT APPROVAL	ASCA
ASCO		ASCO P.O. OVER TECHNOLOGIES LP, FLORENCE, ALA. 35243-0001	
DRAWN BY		SCALE	
184913		1" = 1"	
REV. B		REV. DS	
REV. 278556		REV. 5 OF 8	

