

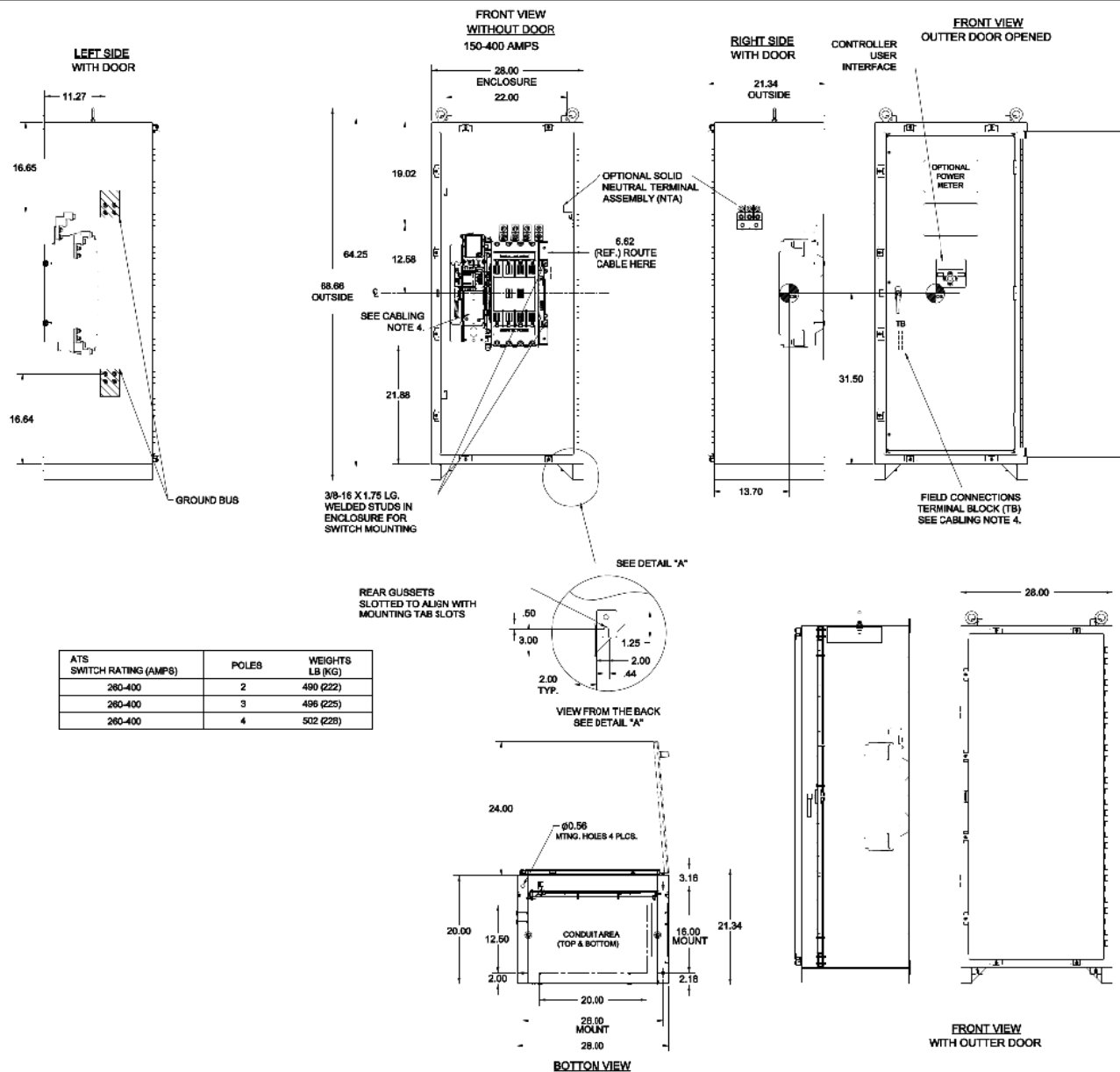
Transfer Switch Details

Transfer Switch Details

#8	ATS	AMPS: 0400	QTY: 2
Product	: Series 300	Catalog Number	: J03ATSB30400CGXM
Service Voltage / Hz	: 208V/60Hz	Optional Accessories	: 11BE,44G
Bypass Isolation	: Not Applicable	Product Description	: 300 Series, Automatic Open Transition Transfer Switch
No. of Switched Poles: 4	: 4	Neutral Configuration	: Switched [B]
Withstand Rating:	: See WCR Table Below	No. of Cables & Lug Size	: 1, #4 AWG to 600 MCM or (2) 1/0 AWG to 250 MCM
Frame = J, Switch Rating = 0400, Series = 300			
Enclosure	: 3R(M)-UL Type 3R secure double door enclosure (See Disclaimer 3)	Service	: Three Phase, 4-wire
Extended Warranty	: Not Included	Markings	:

#	ACCESSORY DESCRIPTIONS	
	Accessory Code	Description
1	11BE	Adds the following features to the Group G controller: (1) Serial RS-485 Modbus Communications (2) Multi-Schedule Engine Exerciser (3) a 300 Entry Event Log and (4) a common alarm output function. When applied on 3-phase systems it also enables: (1) 3-Phase Emergency Source VLL sensing (2) Phase Rotation Monitoring (3) Emergency Source VLL Unbalance Monitoring.
2	44G	Strip heater w/ thermostat, wired to load terminals: 208-600 volts

OUTLINE FOR ~~1900~~ SERIES 260-400 AMPERE "J" FRAME (3ATS,3NTS) FRONT CONNECTED TRANSFER SWITCHES TYPE 3R/4/4X/12 SECURE ENCLOSURE



GENERAL NOTES

1. TYPE 3940/421 ENCLOSURE. FREE STANDING, FLOOR OR WALL MOUNTING. 1/4 GAUGE CONSTRUCTION.
2. DOOR HINGED ON RIGHT SIDE. LOCKABLE FLAP ON LEFT SIDE, DOOR CLAMPS LEFT, TOP, AND BOTTOM.
3. FINISH: TYPE 394/42: ANS I 61 GRAY POLYESTER SEMI GLOSS ELECTROSTATIC POWDER.
- TYPE 4K: ANS I EXTERIOR CONSTRUCTED OF COOL GAUGE TYPE 304 STAINLESS STEEL.
- TYPE 4K-AN EXTERIOR CONSTRUCTED OF COOL GAUGE TYPE 316 STAINLESS STEEL.
- OTHER ANS I COLORS AVAILABLE CONSULT FACTORY UL RECOGNIZED.
4. RECOMMENDED CLEARANCES:
- FRONT: 24 INCHES
- A 20 "X" RATED GROUND BUS IS PROVIDED.
5. UNIT IS DESIGNED FOR COMBINATION TOP AND BOTTOM CABLE ENTRY. THE STANDARD SWITCH CONFIGURATION IS FOR TOP LOGS EMERGENT AND/AND BOTTOM LOGS NORMAL.
6. THE FOLLOWING CONNECTIONS ARE REQUIRED: EACH SOURCE AND THE LOAD IS REQUIRED WHEN PROVIDED IT IS ONE OF THE FOLLOWING PRIORITYS AS SPECIFIED BY THE CATALOG NO. NEUTRAL TYPE:
- A. SOLID COPPER BUS NEUTRAL
- B. SWITCHED NEUTRAL POLE
7. CENTER OF GRAVITY.
8. WHEN INSTALLING GROUND LOGS TO TYPE 4 ENCLOSURE REMOVE HARDWARE FROM STUDS AND RE-DRILLING PATTERNED TO EXPOSE UNPAINTED SURFACE.

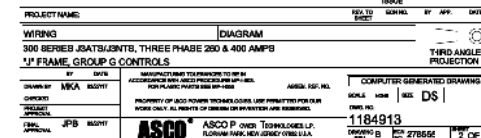
CABLING NOTES

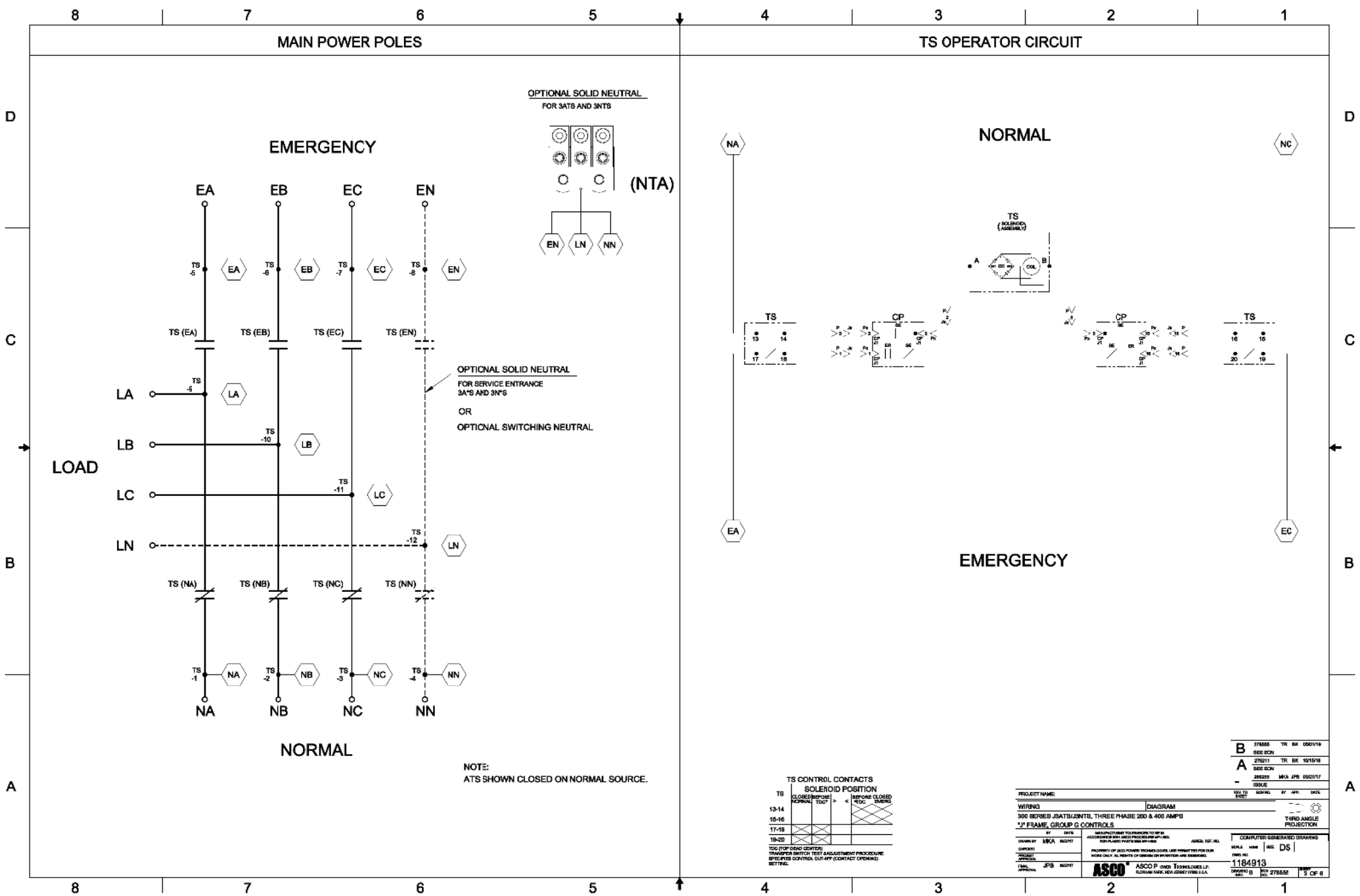
1. ALL SIZES SUPPLY STANDARD WITH MECHANICAL (CROWT) TYPE LUGS. (SEE AMP SIZE BELOW)
 - A. LUG MATERIAL: ALUMINUM ALLOY 6061-T6 WITH ELECTRO TIN PLATED FINISH.
 - B. SCREW MATERIAL: ALUMINUM ALLOY 6262-T9 WITH ELECTRO TIN PLATED FINISH.
 - C. LUG LISTED, CSA CERTIFIED.
 - D. LUG SCREW TIGHTENING TORQUE PER UL 486B: 10 FT-LBS.
 - E. SUITABLE WIRE BENDING SPACE IS PROVIDED. (SEE AMP SIZE BELOW)
2. CONSULT FACTORY FOR OTHER TERMINATION REQUIREMENTS.
3. GROUND LUGS ARE PROVIDED STANDARD AS FOLLOWS. (SEE AMP SIZE BELOW)

NOTES 260-400 AMP SWITCHES

1. SUPPLIED WITH STANDARD MECHANICAL (SCREW TYPE) LUGS ON THE NORMAL EMERGENCY & LOAD BUS STABS. ONE (1) LUG PER PHASE AND NEUTRAL EACH SUITABLE FOR CONNECTION OF TWO (2) 1/0 - 250MCM CU AL CABLES OR ONE (1) #4 - 50MCM CU AL CABLE.
- A. SUITABLE WIRE BENDING SPACE IS PROVIDED FOR UP TO ONE (1) 600MCM CABLE PER TERMINAL PER NEC.
2. GROUND LUGS ARE PROVIDED STANDARD AS FOLLOWS:
SIX (6) 1/0 - 250MCM CU AL CABLES OR THREE (3) #4 - 50MCM CU AL CABLE CONNECTIONS.

ATS SWITCH RATING (AMPs)	POLES	WEIGHTS LB (KG)
280-400	2	490 (222)
280-400	3	496 (225)
280-400	4	502 (228)





PROJECT NAME		DATE	BY	APP.	DATE
WIRING		DATE	BY	APP.	DATE
300 SERIES 3A/TS/3N/TS, THREE PHASE 280 & 400 AMP		DATE	BY	APP.	DATE
"J" FRAME, GROUP G CONTROLS		DATE	BY	APP.	DATE
BY		DATE	BY	APP.	DATE
CHECKED		DATE	BY	APP.	DATE
APPROVED		DATE	BY	APP.	DATE
JPB		DATE	BY	APP.	DATE
ASCO		DATE	BY	APP.	DATE
ASCO P. OVER TECHNOLOGIES, L.P.		DATE	BY	APP.	DATE
FLORHAM PARK, NEW JERSEY 07631		DATE	BY	APP.	DATE
1184913		DATE	BY	APP.	DATE
278556		DATE	BY	APP.	DATE
3 OF 8		DATE	BY	APP.	DATE

D

C

B

A

D

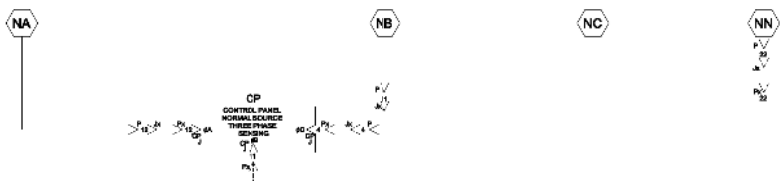
C

B

A

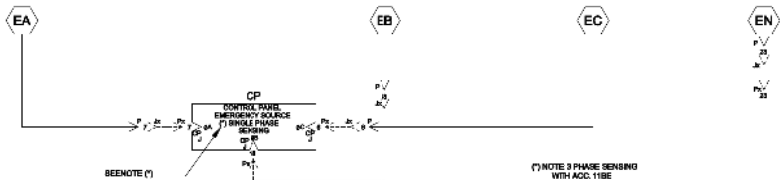
NORMAL SOURCE CIRCUITS

NORMAL



EMERGENCY SOURCE CIRCUITS

EMERGENCY

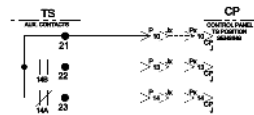


LOAD TERMINAL CIRCUITS

LOAD



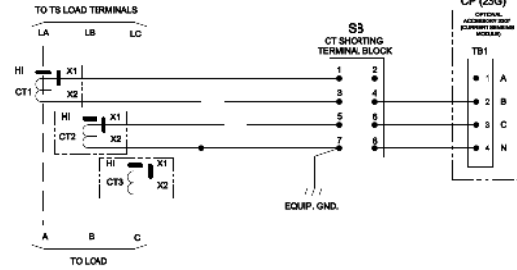
CONTROL SIGNALS & INDICATION



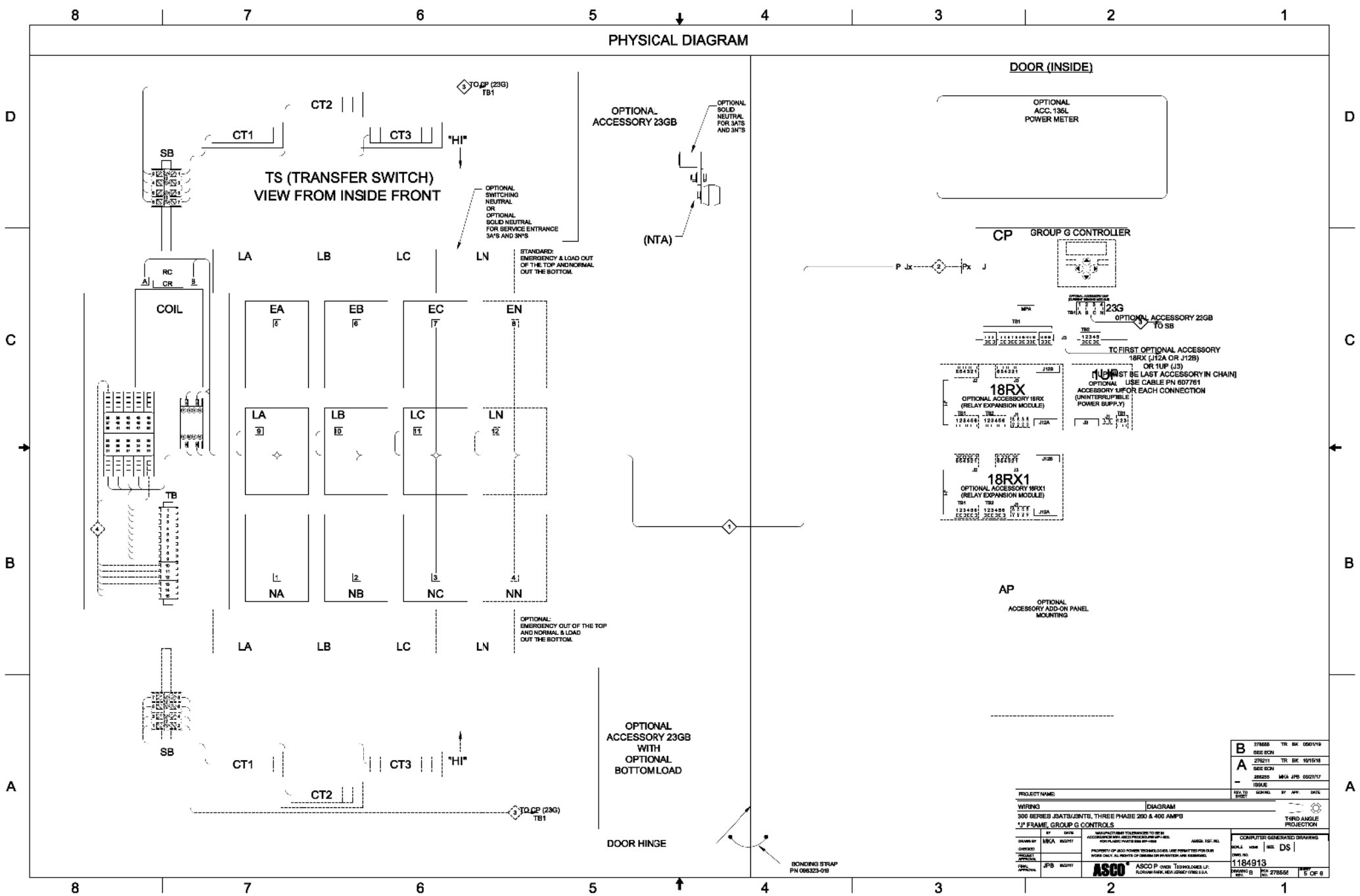
ADDITIONAL CIRCUITS

OPTIONAL ACCESSORY 23GB (LOAD CURRENT METERING)

CURRENT TRANSFORMER RATIO TABLE	
SWITCH RATING	CT RATIO
250A	3005A
400A	4005A



PROJECT NAME		DATE		BY		CHKD	
WIRING		DIAGRAM		SCALE		DS	
300 SERIES JSATS/JNITS, THREE PHASE 250 & 400 AMP'S		300 SERIES JSATS/JNITS, THREE PHASE 250 & 400 AMP'S		300 SERIES JSATS/JNITS, THREE PHASE 250 & 400 AMP'S		300 SERIES JSATS/JNITS, THREE PHASE 250 & 400 AMP'S	
"J" FRAME, GROUP G CONTROLS		"J" FRAME, GROUP G CONTROLS		"J" FRAME, GROUP G CONTROLS		"J" FRAME, GROUP G CONTROLS	
BY		DATE		BY		DATE	
CHKD		DATE		BY		DATE	
APPROVAL		DATE		BY		DATE	
JPB		11/18/93		JPB		11/18/93	
ASCO		ASCO P. OVER TECHNOLOGIES, L.P.		ASCO P. OVER TECHNOLOGIES, L.P.		ASCO P. OVER TECHNOLOGIES, L.P.	
FLORHAM PARK, NEW JERSEY 07631		FLORHAM PARK, NEW JERSEY 07631		FLORHAM PARK, NEW JERSEY 07631		FLORHAM PARK, NEW JERSEY 07631	
REV. B		REV. B		REV. B		REV. B	
278556		278556		278556		278556	
4 OF 6		4 OF 6		4 OF 6		4 OF 6	



PROJECT NAME		DIAGRAM	
WIRING 300 SERIES JSATS/JNITS, THREE PHASE 280 & 400 AMP'S			
"J" FRAME, GROUP G CONTROLS			
BY	DATE	MANUFACTURING TOLERANCES TO BE IN ACCORDANCE WITH ASME Y14.5M-1994. FOR VARIATION FROM THIS SEE SPEC.	
DESIGNED BY	AP/CA	CHECKED BY	AP/CA
PROJECT APPROVAL	AP/CA	DATE	11/11/11
ASCO		ASCO POWER TECHNOLOGIES LP, FLORENCE, MA, 01037-0001	
SCALE		1" = 1"	
DRAWN BY		B	
DATE		11/11/11	
SHEET		5 OF 8	

B	178666	TR	SK	05/01/18
SEE BOM				
A	270211	TR	SK	10/15/18
SEE BOM				
	270215	TR	SK	05/01/17
SEE BOM				

COMPUTER GENERATED DRAWING

SCALE 1" = 1"

DRAWN BY B

DATE 11/11/11

SHEET 5 OF 8

