

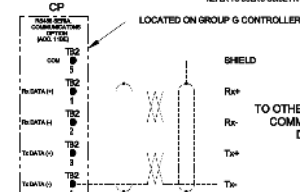
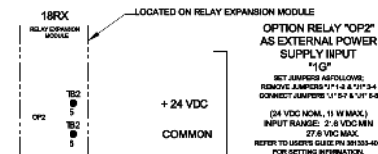
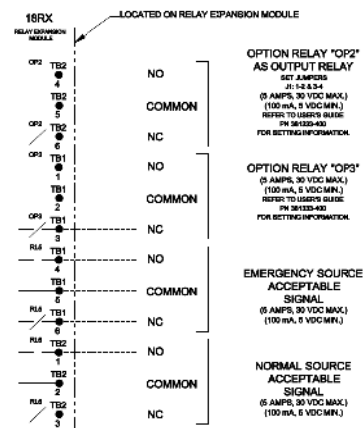
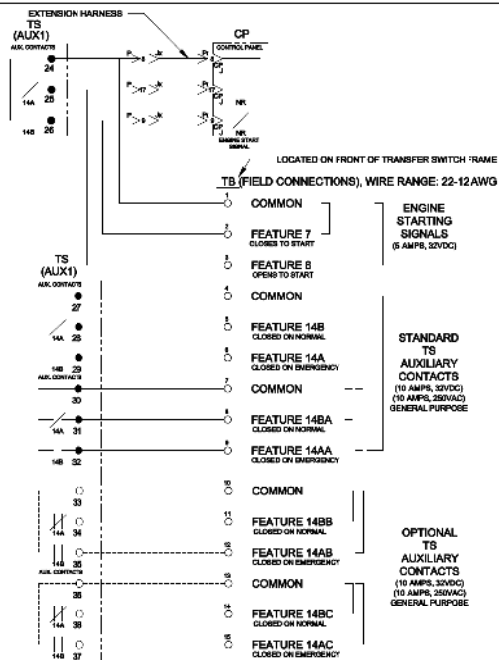
### Transfer Switch Details

#3	ATS	AMPS: 3000	QTY: 2
Product	: Series 300	Catalog Number	: G03AUSB33000NGXM
Service Voltage / Hz	: 480V/60Hz	Optional Accessories	: 11BE,40PB,44G,119M
Bypass Isolation	: Not Applicable	Product Description	: 300 Series, Automatic Service Entrance Transfer Switch
No. of Switched Poles: 4	: 4	Neutral Configuration	: Switched [B]
Withstand Rating:	: See WCR Table Below	No. of Cables & Lug Size	: See Applicable Outline Drawing
Frame = G, Switch Rating = 3000, Series = 300			
Enclosure	: 3R(M)-UL Type 3R secure double door enclosure (See Disclaimer 3)	Service	: Three Phase, 4-wire
Extended Warranty	: Not Included	Markings	:

#	ACCESSORY DESCRIPTIONS	
	Accessory Code	Description
1	11BE	Adds the following features to the Group G controller: (1) Serial RS-485 Modbus Communications (2) Multi-Schedule Engine Exerciser (3) a 300 Entry Event Log and (4) a common alarm output function. When applied on 3-phase systems it also enables: (1) 3-Phase Emergency Source VLL sensing (2) Phase Rotation Monitoring (3) Emergency Source VLL Unbalance Monitoring.
2	40PB	Normal and Emergency Reversed (Available on all frames and sizes)
3	44G	Strip heater w/ thermostat, wired to load terminals: 208-600 volts
4	119M	Energy Reducing Maintenance Switch (ERMS) ERMS lowers the instantaneous pickup setting, utilizes a faster acting instantaneous trip function, or activates an alternate set of trip settings on a breaker to provide reduced arc flash incident energy. To be used on service entrance rated switches containing Square D breakers with MicroLogic 5.0/6.0 P/H trip units Customer is responsible for all trip unit settings. Customer supplied 24VDC is required.



## FIELD CONNECTIONS

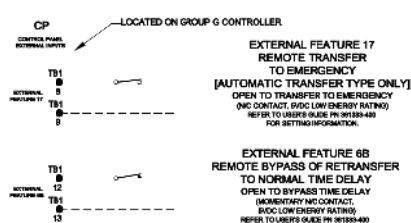
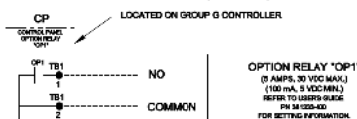
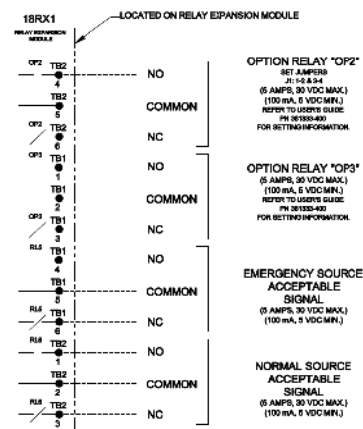


**NOTES:**

1. EARTH GROUND SHIELD AT HOST DEVICE ONLY.
2. FIELD WIRING: USE UL LISTED, STRANDED, TWISTED PAIRS, OVERALL FOIL SHIELD WITH STRANDED DRAIN WIRE SUITABLE FOR R5422 EQUIVALENT TO:

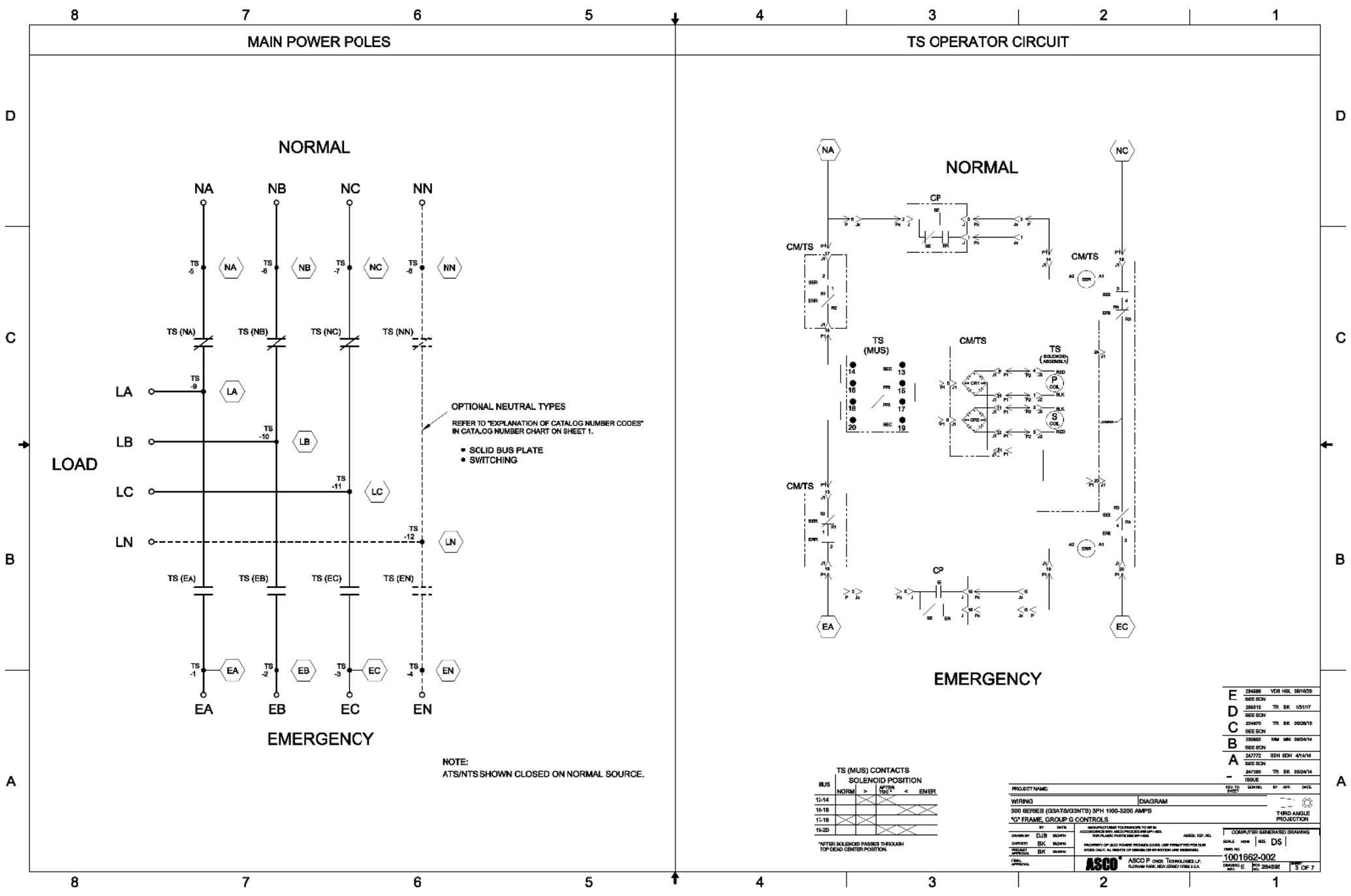
(STANDARD 90°C) Belden 9842 OR 9829 OR ALPHA 6222C OR 1222C

(PLUMIN RATED) Belden 80720 OR 67720 OR ALPHA 5890C

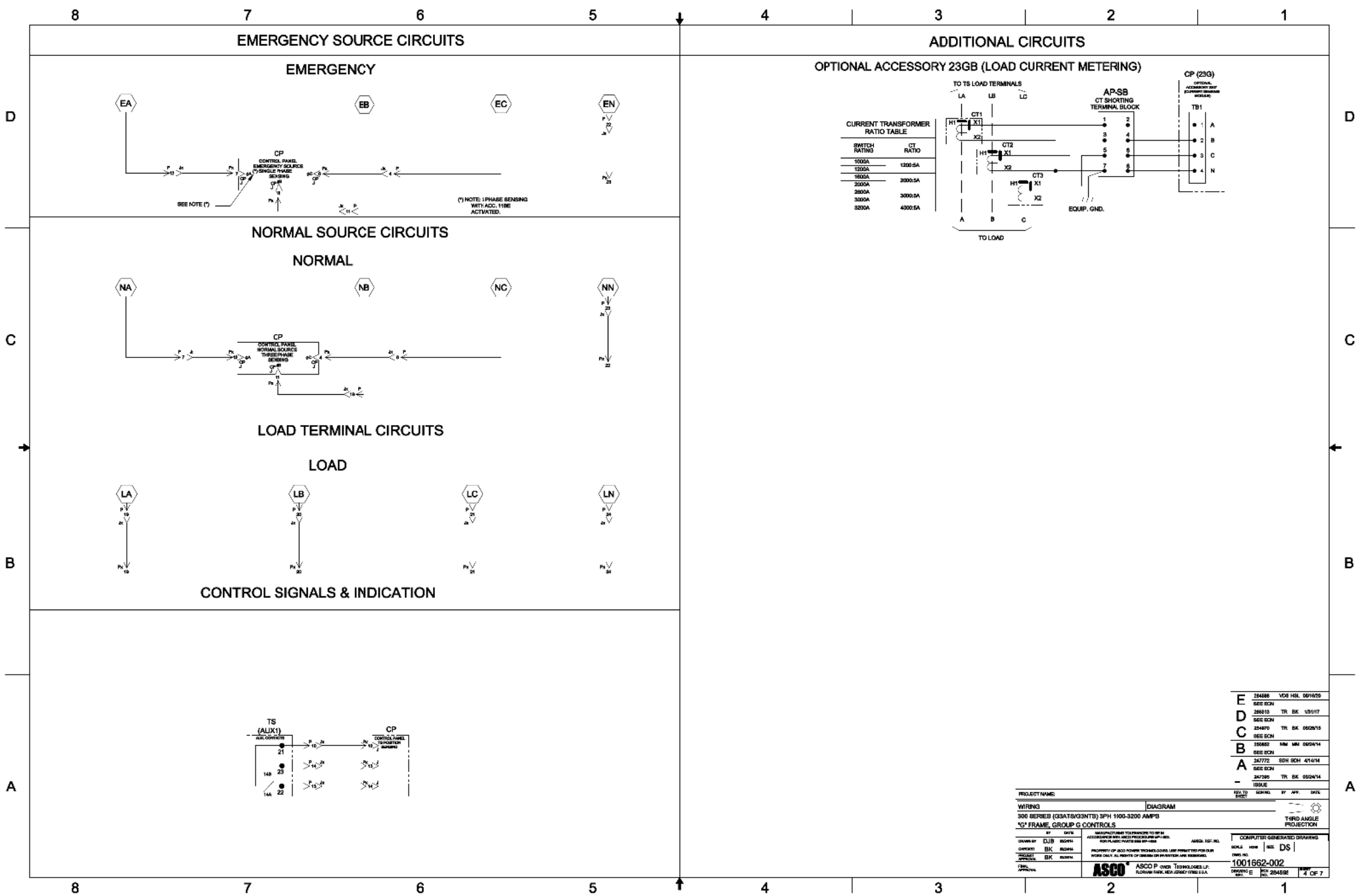


E	254666	VDR	VSX	05/10/21
	SEE ECR			
D	266515	TR	BK	15/11/21
	SEE ECR			
C	254670	TR	BK	05/05/21
	SEE ECR			
B	255082	MM	MM	02/04/21
	SEE ECR			
A	247772	SDH	SDH	4/11/19
	SEE ECR			
-	247395	TR	BK	05/04/21
	100416			

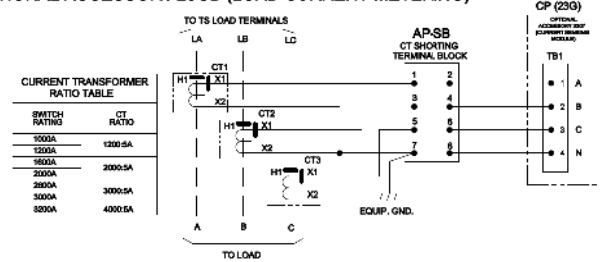
PROJECT NAME		REV. TO	SHEET	BY	APP.	DATE
WIRING		DIAGRAM				
300 SERIES (33ATS/33NTS) 3PH 1100-3200 AMP/3						
"G" FRAME GROUP C CONTROLS						
BY	DATE	REWORK/REVISIONS TO BE MADE BY			COMPUTER GENERATED DRAWING	
CHANGED BY	DATE	REWORK/REVISIONS TO BE MADE BY			SCALE	
APPROVED BY	DATE	REWORK/REVISIONS TO BE MADE BY			DATE	
APPROVED BY	DATE	REWORK/REVISIONS TO BE MADE BY			DATE	
ASCO		ASCO P OVER THERMAL/UL			1001862-02	
ASCO		ASCO P OVER THERMAL/UL			1001862-02	
ASCO		ASCO P OVER THERMAL/UL			1001862-02	



E	254086	YDS HBL 05/19/25
D	254087	TR BK 1/5/17
C	254088	TR BK 05/25/15
B	254089	TR BK 05/25/14
A	254090	TR BK 05/25/14
	254091	TR BK 05/25/14
	254092	TR BK 05/25/14
	254093	TR BK 05/25/14
	254094	TR BK 05/25/14
	254095	TR BK 05/25/14
	254096	TR BK 05/25/14
	254097	TR BK 05/25/14
	254098	TR BK 05/25/14
	254099	TR BK 05/25/14
	254100	TR BK 05/25/14



OPTIONAL ACCESSORY 23GB (LOAD CURRENT METERING)



**REVISIONS**

NO.	DATE	DESCRIPTION	BY	CHKD.
1	05/10/17	ISSUED FOR CONSTRUCTION	YCH	SEL
2	05/10/17	REVISED	YCH	SEL
3	05/10/17	REVISED	YCH	SEL
4	05/10/17	REVISED	YCH	SEL
5	05/10/17	REVISED	YCH	SEL
6	05/10/17	REVISED	YCH	SEL
7	05/10/17	REVISED	YCH	SEL
8	05/10/17	REVISED	YCH	SEL
9	05/10/17	REVISED	YCH	SEL
10	05/10/17	REVISED	YCH	SEL

**PROJECT INFORMATION**

PROJECT NAME: 300 SERIES (33ATS/33NTS) 3PH 1100-3200 AMP'S

WIRING DIAGRAM

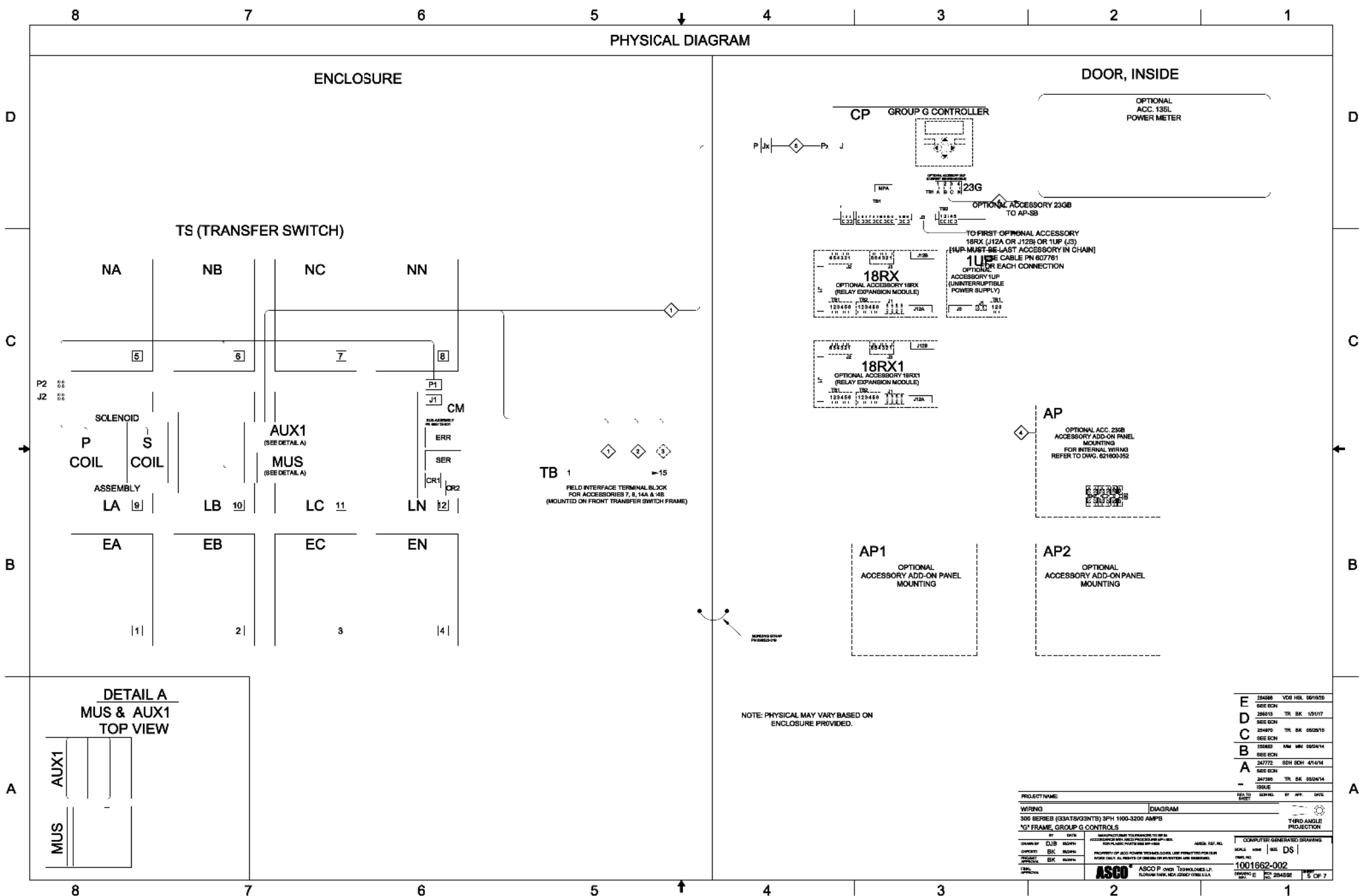
DATE: 05/10/17

SCALE: 1/8" = 1'

PROJECT NO: 1001662-002

REV: 1

4 OF 7

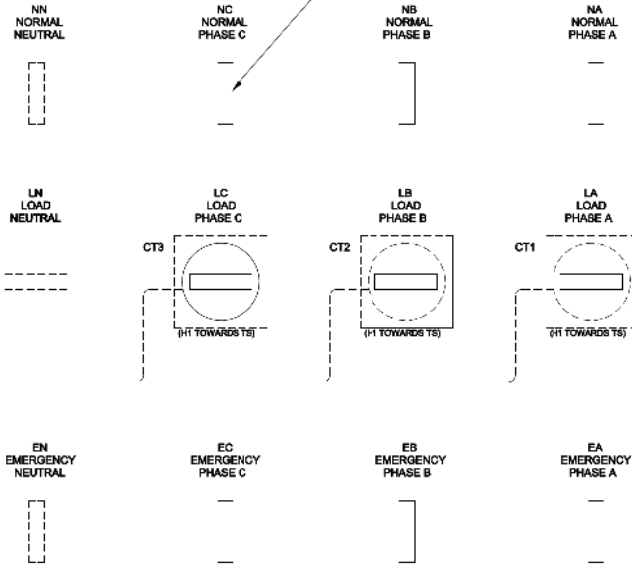


# PHYSICAL DIAGRAM (CONTINUED)

## REAR CONNECTED SWITCH (W/ACC. 40\*B) 1000 - 3200 AMP. TS REAR VIEW

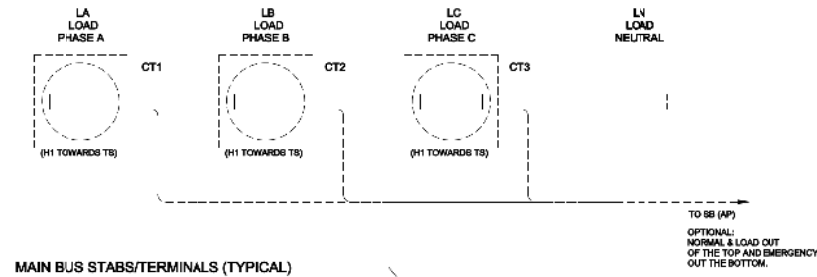
OPTIONAL ACCESSORY 23GB  
(LOAD CURRENT METERING)

MAIN BUS STABS/TERMINALS (TYPICAL)

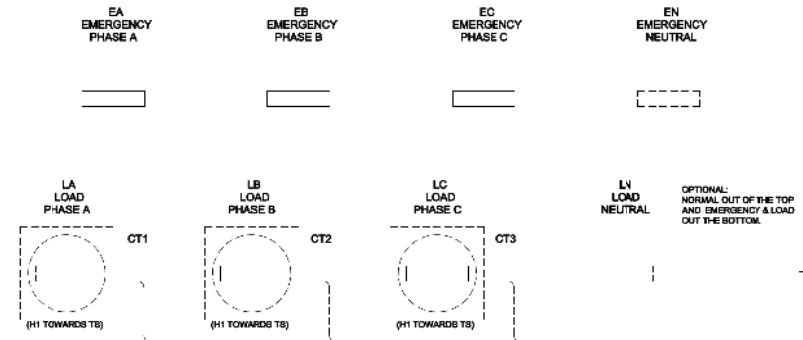


## FRONT CONNECTED SWITCH (W/ACC. 40\*R) 1000 - 2000 AMP. TS TOP VIEW

OPTIONAL ACCESSORY 23GB  
(LOAD CURRENT METERING)



## BOTTOM VIEW



E	354086	YDS HSL 06/19/05
D	354086	TR BK 1/5/17
C	354086	TR BK 05/28/15
B	354086	TR BK 05/28/15
A	354086	TR BK 05/28/15

PROJECT NAME	DIAGRAM	ISSUED TO	DATE
WIRING	300 SERIES (30ATS/30NTS) 3PH 1000-3200 AMP'S	ISSUED TO	DATE
"G" FRAME, GROUP G CONTROLS		ISSUED TO	DATE
BY	DATE	APPROVED	DATE
CHECKED	DATE	APPROVED	DATE
DESIGNED	DATE	APPROVED	DATE
PROJECT	DATE	APPROVED	DATE
APPROVAL	DATE	APPROVED	DATE

ASCO P OVER TECHNOLOGIES, L.P.  
1001662-002  
REV. 10/2014





D

C

B

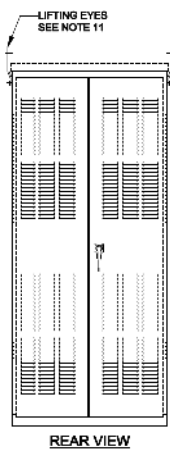
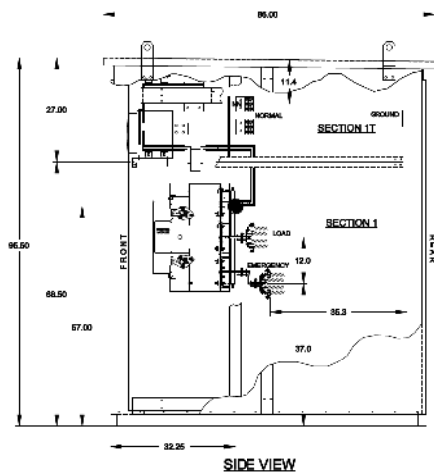
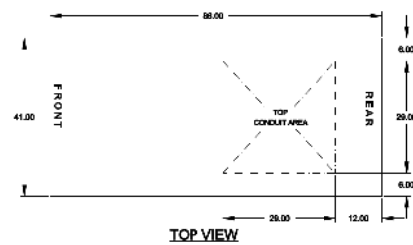
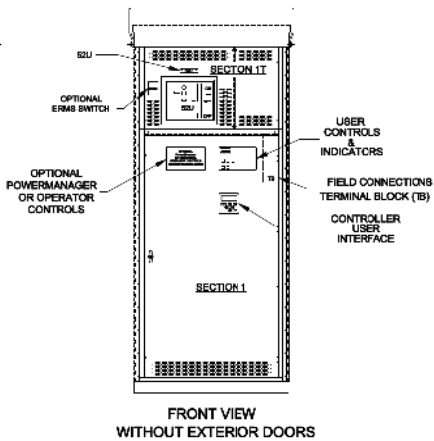
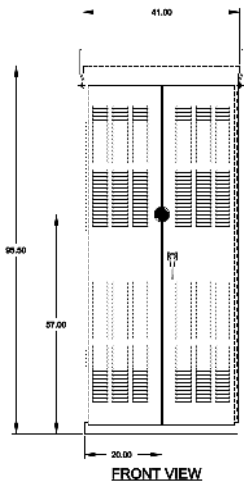
A

D

C

B

A



### GENERAL NOTES

1. FLOOR MOUNTED ENCLOSURE.  
TYPE 3R CONSTRUCTED FROM CODE GAUGE STEEL.  
FINISH: TYPE 3R, ANSI 61 GRAY POLYESTER SEMI GLOSS ELECTROSTATIC POWDER.  
TYPE 3RX EXTERIOR CONSTRUCTED FROM CODE GAUGE STAINLESS STEEL.  
(R) EXTERIOR CONSTRUCTED FROM TYPE 304 STAINLESS STEEL.  
(S) EXTERIOR CONSTRUCTED FROM TYPE 316 STAINLESS STEEL.
2. EXTERIOR DOORS HAVE PADLOCKABLE HANDLES WITH 3-POINT LATCH  
3. DESIGNED FOR FRONT & REAR ACCESS.
4. RECOMMENDED CLEARANCES: FRONT: 36" REAR: 36"
5. EXTERIOR VENTS ARE SUPPLIED WITH POLYESTER DUST FILTERS.
6. LIFTING PLATES: SECTIONS ARE SUPPLIED WITH LIFTING PLATES. INSPECT PLATES FOR DAMAGE AND TORQUE BOLTS TO 45 FT LBS BEFORE USE. REFER TO ANSINEMA PB 2.1 FOR PROPER HANDLING OF EQUIPMENT. AFTER INSTALLATION OF SECTION, REMOVE LIFTING PLATES. REINSTALL BOLTS INTO EXTERIOR HOLS AND TORQUE TO APPROXIMATELY 20 FT LBS.
7. SECTION 1 AND SECTION 1T SHIP AS ONE UNIT.
8. CENTER OF GRAVITY
9. APPROXIMATE WEIGHT: 3250LB.

### SYSTEM NOTES

1. SYSTEM RATING: 2500 AMPS, 3000 AMPS, 36, 4W.  
SHORT CIRCUIT RATING- 100,000 RMS SYM AMPERES @ 480V.  
THE EMERGENCY SOURCE MUST BE PROTECTED BY A REMOTE OVERCURRENT PROTECTION DEVICE AS LISTED ON THE MARKINGS ON THE TRANSFER SWITCH.
2. ALL BUS IS SILVER-PLATED COPPER, BASED ON 800A PER SQ. IN. DENSITY.
3. GROUND BUS: 20% RATED.
4. NEUTRAL BUS: 100% RATED.
5. APPLICABLE LABELS: U.L. 891- SUITABLE ONLY FOR USE AS SERVICE EQUIPMENT.

### TRANSFER SWITCH

1. G FRAME AUTOMATIC TRANSFER SWITCH 2500A - 3000A.
2. TRANSFER SWITCH RATING: 2500 AMPS, 3000 AMPS.  
SHORT CIRCUIT RATING WHEN PROTECTED BY A CIRCUIT BREAKER  
TIME RESPONSE, MAXIMUM 0.08 SECONDS: 100,000 RMS SYM @ 480V
3. A FULL RATED NEUTRAL CONNECTION FOR EACH SOURCE AND THE LOAD IS OPTIONAL.  
WHEN PROVIDED IT IS IN ONE OF THE FOLLOWING FORMATS.  
A. SOLID NEUTRAL  
B. SWITCHED NEUTRAL POLE  
C. OVERLAPPING NEUTRAL POLE
4. UL 1008

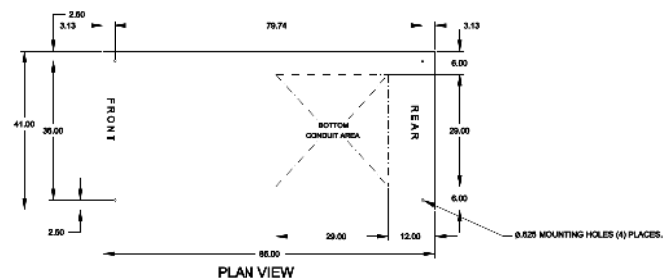
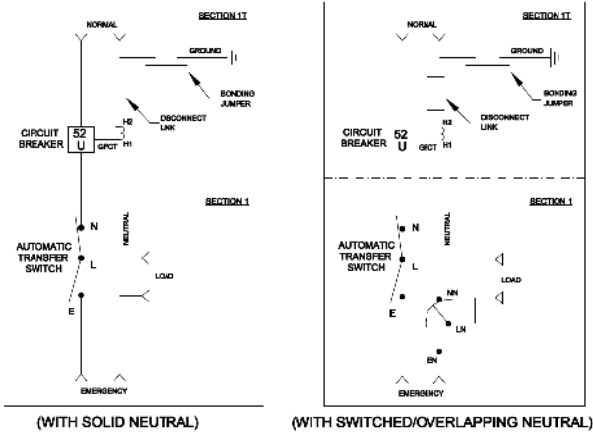
### TERMINATIONS 2500-3000 AMPS

1. SUPPLIED WITH MECHANICAL (SCREW TYPE) LUGS FOR CUAL CABLE.  
NORMAL: (12) 1/0 - 600MCM PER PHASE & NEUTRAL  
LOAD: (12) 1/0 - 800MCM PER PHASE & NEUTRAL  
EMERGENCY: (12) 1/0 - 600MCM PER PHASE & NEUTRAL  
GROUND: (8) 1/0 - 600MCM  
A. SUITABLE WIRE BENDING SPACE IS PROVIDED AS PER NEC.
2. OPTIONAL LUGS MAY BE SUPPLIED.

### SERVICE ENTRANCE BREAKER: ITEM 52U

1. SQUARE "D" 100% RATED. TYPE NW, 3000AF/3000AT OR 2500AF/2500AT STATIONARY MOUNTED  
MANUALLY OPERATED, WITH LONG DELAY, SHORT DELAY, INSTANTANEOUS AND GROUND FAULT TRIP SETTINGS
2. OPTIONAL ENERGY REDUCTION MAINTENANCE SETTING (ERMS) SYSTEM MAY BE SUPPLIED.
3. U.L. 489

### ONE LINE DIAGRAMS



PROJECT NAME:	MOUNTING		
OUTLINE:	GAUS 2500A - 3000A, NW SERVICE ENTRANCE BREAKER ON NORMAL.		
TYPE 3R/3RX, 66 X 41 X 86	MANUFACTURED TO SPECIFICATIONS OF THE NATIONAL ELECTRICAL MANUFACTURERS ASSOCIATION (NEMA) AND THE NATIONAL FIRE PROTECTION ASSOCIATION (NFPA).		
DESIGNED BY: RYN 30-47	DATE: 10-1-11	SCALE: 1/4" = 1'	ASCO P. OVER
CHECKED BY: RYN 30-47	DATE: 10-1-11	SCALE: 1/4" = 1'	ASCO P. OVER
PROJECT NO: 754577-053	DATE: 10-1-11	SCALE: 1/4" = 1'	ASCO P. OVER
DESIGNED BY: RYN 30-47	DATE: 10-1-11	SCALE: 1/4" = 1'	ASCO P. OVER
CHECKED BY: RYN 30-47	DATE: 10-1-11	SCALE: 1/4" = 1'	ASCO P. OVER
PROJECT NO: 754577-053	DATE: 10-1-11	SCALE: 1/4" = 1'	ASCO P. OVER
DESIGNED BY: RYN 30-47	DATE: 10-1-11	SCALE: 1/4" = 1'	ASCO P. OVER
CHECKED BY: RYN 30-47	DATE: 10-1-11	SCALE: 1/4" = 1'	ASCO P. OVER
PROJECT NO: 754577-053	DATE: 10-1-11	SCALE: 1/4" = 1'	ASCO P. OVER
DESIGNED BY: RYN 30-47	DATE: 10-1-11	SCALE: 1/4" = 1'	ASCO P. OVER
CHECKED BY: RYN 30-47	DATE: 10-1-11	SCALE: 1/4" = 1'	ASCO P. OVER
PROJECT NO: 754577-053	DATE: 10-1-11	SCALE: 1/4" = 1'	ASCO P. OVER
DESIGNED BY: RYN 30-47	DATE: 10-1-11	SCALE: 1/4" = 1'	ASCO P. OVER
CHECKED BY: RYN 30-47	DATE: 10-1-11	SCALE: 1/4" = 1'	ASCO P. OVER
PROJECT NO: 754577-053	DATE: 10-1-11	SCALE: 1/4" = 1'	ASCO P. OVER
DESIGNED BY: RYN 30-47	DATE: 10-1-11	SCALE: 1/4" = 1'	ASCO P. OVER
CHECKED BY: RYN 30-47	DATE: 10-1-11	SCALE: 1/4" = 1'	ASCO P. OVER
PROJECT NO: 754577-053	DATE: 10-1-11	SCALE: 1/4" = 1'	ASCO P. OVER
DESIGNED BY: RYN 30-47	DATE: 10-1-11	SCALE: 1/4" = 1'	ASCO P. OVER
CHECKED BY: RYN 30-47	DATE: 10-1-11	SCALE: 1/4" = 1'	ASCO P. OVER
PROJECT NO: 754577-053	DATE: 10-1-11	SCALE: 1/4" = 1'	ASCO P. OVER
DESIGNED BY: RYN 30-47	DATE: 10-1-11	SCALE: 1/4" = 1'	ASCO P. OVER
CHECKED BY: RYN 30-47	DATE: 10-1-11	SCALE: 1/4" = 1'	ASCO P. OVER
PROJECT NO: 754577-053	DATE: 10-1-11	SCALE: 1/4" = 1'	ASCO P. OVER
DESIGNED BY: RYN 30-47	DATE: 10-1-11	SCALE: 1/4" = 1'	ASCO P. OVER
CHECKED BY: RYN 30-47	DATE: 10-1-11	SCALE: 1/4" = 1'	ASCO P. OVER
PROJECT NO: 754577-053	DATE: 10-1-11	SCALE: 1/4" = 1'	ASCO P. OVER
DESIGNED BY: RYN 30-47	DATE: 10-1-11	SCALE: 1/4" = 1'	ASCO P. OVER
CHECKED BY: RYN 30-47	DATE: 10-1-11	SCALE: 1/4" = 1'	ASCO P. OVER
PROJECT NO: 754577-053	DATE: 10-1-11	SCALE: 1/4" = 1'	ASCO P. OVER
DESIGNED BY: RYN 30-47	DATE: 10-1-11	SCALE: 1/4" = 1'	ASCO P. OVER
CHECKED BY: RYN 30-47	DATE: 10-1-11	SCALE: 1/4" = 1'	ASCO P. OVER
PROJECT NO: 754577-053	DATE: 10-1-11	SCALE: 1/4" = 1'	ASCO P. OVER
DESIGNED BY: RYN 30-47	DATE: 10-1-11	SCALE: 1/4" = 1'	ASCO P. OVER
CHECKED BY: RYN 30-47	DATE: 10-1-11	SCALE: 1/4" = 1'	ASCO P. OVER
PROJECT NO: 754577-053	DATE: 10-1-11	SCALE: 1/4" = 1'	ASCO P. OVER
DESIGNED BY: RYN 30-47	DATE: 10-1-11	SCALE: 1/4" = 1'	ASCO P. OVER
CHECKED BY: RYN 30-47	DATE: 10-1-11	SCALE: 1/4" = 1'	ASCO P. OVER
PROJECT NO: 754577-053	DATE: 10-1-11	SCALE: 1/4" = 1'	ASCO P. OVER
DESIGNED BY: RYN 30-47	DATE: 10-1-11	SCALE: 1/4" = 1'	ASCO P. OVER
CHECKED BY: RYN 30-47	DATE: 10-1-11	SCALE: 1/4" = 1'	ASCO P. OVER
PROJECT NO: 754577-053	DATE: 10-1-11	SCALE: 1/4" = 1'	ASCO P. OVER
DESIGNED BY: RYN 30-47	DATE: 10-1-11	SCALE: 1/4" = 1'	ASCO P. OVER
CHECKED BY: RYN 30-47	DATE: 10-1-11	SCALE: 1/4" = 1'	ASCO P. OVER
PROJECT NO: 754577-053	DATE: 10-1-11	SCALE: 1/4" = 1'	ASCO P. OVER
DESIGNED BY: RYN 30-47	DATE: 10-1-11	SCALE: 1/4" = 1'	ASCO P. OVER
CHECKED BY: RYN 30-47	DATE: 10-1-11	SCALE: 1/4" = 1'	ASCO P. OVER
PROJECT NO: 754577-053	DATE: 10-1-11	SCALE: 1/4" = 1'	ASCO P. OVER
DESIGNED BY: RYN 30-47	DATE: 10-1-11	SCALE: 1/4" = 1'	ASCO P. OVER
CHECKED BY: RYN 30-47	DATE: 10-1-11	SCALE: 1/4" = 1'	ASCO P. OVER
PROJECT NO: 754577-053	DATE: 10-1-11	SCALE: 1/4" = 1'	ASCO P. OVER
DESIGNED BY: RYN 30-47	DATE: 10-1-11	SCALE: 1/4" = 1'	ASCO P. OVER
CHECKED BY: RYN 30-47	DATE: 10-1-11	SCALE: 1/4" = 1'	ASCO P. OVER
PROJECT NO: 754577-053	DATE: 10-1-11	SCALE: 1/4" = 1'	ASCO P. OVER
DESIGNED BY: RYN 30-47	DATE: 10-1-11	SCALE: 1/4" = 1'	ASCO P. OVER
CHECKED BY: RYN 30-47	DATE: 10-1-11	SCALE: 1/4" = 1'	ASCO P. OVER
PROJECT NO: 754577-053	DATE: 10-1-11	SCALE: 1/4" = 1'	ASCO P. OVER
DESIGNED BY: RYN 30-47	DATE: 10-1-11	SCALE: 1/4" = 1'	ASCO P. OVER
CHECKED BY: RYN 30-47	DATE: 10-1-11	SCALE: 1/4" = 1'	ASCO P. OVER
PROJECT NO: 754577-053	DATE: 10-1-11	SCALE: 1/4" = 1'	ASCO P. OVER
DESIGNED BY: RYN 30-47	DATE: 10-1-11	SCALE: 1/4" = 1'	ASCO P. OVER
CHECKED BY: RYN 30-47	DATE: 10-1-11	SCALE: 1/4" = 1'	ASCO P. OVER
PROJECT NO: 754577-053	DATE: 10-1-11	SCALE: 1/4" = 1'	ASCO P. OVER
DESIGNED BY: RYN 30-47	DATE: 10-1-11	SCALE: 1/4" = 1'	ASCO P. OVER
CHECKED BY: RYN 30-47	DATE: 10-1-11	SCALE: 1/4" = 1'	ASCO P. OVER
PROJECT NO: 754577-053	DATE: 10-1-11	SCALE: 1/4" = 1'	ASCO P. OVER
DESIGNED BY: RYN 30-47	DATE: 10-1-11	SCALE: 1/4" = 1'	ASCO P. OVER
CHECKED BY: RYN 30-47	DATE: 10-1-11	SCALE: 1/4" = 1'	ASCO P. OVER
PROJECT NO: 754577-053	DATE: 10-1-11	SCALE: 1/4" = 1'	ASCO P. OVER
DESIGNED BY: RYN 30-47	DATE: 10-1-11	SCALE: 1/4" = 1'	ASCO P. OVER
CHECKED BY: RYN 30-47	DATE: 10-1-11	SCALE: 1/4" = 1'	ASCO P. OVER
PROJECT NO: 754577-053	DATE: 10-1-11	SCALE: 1/4" = 1'	ASCO P. OVER
DESIGNED BY: RYN 30-47	DATE: 10-1-11	SCALE: 1/4" = 1'	ASCO P. OVER
CHECKED BY: RYN 30-47	DATE: 10-1-11	SCALE: 1/4" = 1'	ASCO P. OVER
PROJECT NO: 754577-053	DATE: 10-1-11	SCALE: 1/4" = 1'	ASCO P. OVER
DESIGNED BY: RYN 30-47	DATE: 10-1-11	SCALE: 1/4" = 1'	ASCO P. OVER
CHECKED BY: RYN 30-47	DATE: 10-1-11	SCALE: 1/4" = 1'	ASCO P. OVER
PROJECT NO: 754577-053	DATE: 10-1-11	SCALE: 1/4" = 1'	ASCO P. OVER
DESIGNED BY: RYN 30-47	DATE: 10-1-11	SCALE: 1/4" = 1'	ASCO P. OVER
CHECKED BY: RYN 30-47	DATE: 10-1-11	SCALE: 1/4" = 1'	ASCO P. OVER
PROJECT NO: 754577-053	DATE: 10-1-11	SCALE: 1/4" = 1'	ASCO P. OVER
DESIGNED BY: RYN 30-47	DATE: 10-1-11	SCALE: 1/4" = 1'	ASCO P. OVER
CHECKED BY: RYN 30-47	DATE: 10-1-11	SCALE: 1/4" = 1'	ASCO P. OVER
PROJECT NO: 754577-053	DATE: 10-1-11	SCALE: 1/4" = 1'	ASCO P. OVER
DESIGNED BY: RYN 30-47	DATE: 10-1-11	SCALE: 1/4" = 1'	ASCO P. OVER
CHECKED BY: RYN 30-47	DATE: 10-1-11	SCALE: 1/4" = 1'	ASCO P. OVER
PROJECT NO: 754577-053	DATE: 10-1-11	SCALE: 1/4" = 1'	ASCO P. OVER
DESIGNED BY: RYN 30-47	DATE: 10-1-11	SCALE: 1/4" = 1'	ASCO P. OVER
CHECKED BY: RYN 30-47	DATE: 10-1-11	SCALE: 1/4" = 1'	ASCO P. OVER
PROJECT NO: 754577-053	DATE: 10-1-11	SCALE: 1/4" = 1'	ASCO P. OVER
DESIGNED BY: RYN 30-47	DATE: 10-1-11	SCALE: 1/4" = 1'	ASCO P. OVER
CHECKED BY: RYN 30-47	DATE: 10-1-11	SCALE: 1/4" = 1'	ASCO P. OVER
PROJECT NO: 754577-053	DATE: 10-1-11	SCALE: 1/4" = 1'	ASCO P. OVER
DESIGNED BY: RYN 30-47	DATE: 10-1-11	SCALE: 1/4" = 1'	ASCO P. OVER
CHECKED BY: RYN 30-47	DATE: 10-1-11	SCALE: 1/4" = 1'	ASCO P. OVER
PROJECT NO: 754577-053	DATE: 10-1-11	SCALE: 1/4" = 1'	ASCO P. OVER
DESIGNED BY: RYN 30-47	DATE: 10-1-11	SCALE: 1/4" = 1'	ASCO P. OVER
CHECKED BY: RYN 30-47	DATE: 10-1-11	SCALE: 1/4" = 1'	ASCO P. OVER
PROJECT NO: 754577-053	DATE: 10-1-11	SCALE: 1/4" = 1'	ASCO P. OVER
DESIGNED BY: RYN 30-47	DATE: 10-1-11	SCALE: 1/4" = 1'	ASCO P. OVER
CHECKED BY: RYN 30-47	DATE: 10-1-11	SCALE: 1/4" = 1'	ASCO P. OVER
PROJECT NO: 754577-053	DATE: 10-1-11	SCALE: 1/4" = 1'	ASCO P. OVER
DESIGNED BY: RYN 30-47	DATE: 10-1-11	SCALE: 1/4" = 1'	ASCO P. OVER
CHECKED BY: RYN 30-47	DATE: 10-1-11	SCALE: 1/4" = 1'	ASCO P. OVER
PROJECT NO: 754577-053	DATE: 10-1-11	SCALE: 1/4" = 1'	ASCO P. OVER
DESIGNED BY: RYN 30-47	DATE: 10-1-11	SCALE: 1/4" = 1'	ASCO P. OVER
CHECKED BY: RYN 30-47	DATE: 10-1-11	SCALE: 1/4" = 1'	ASCO P. OVER
PROJECT NO: 754577-053	DATE: 10-1-11	SCALE: 1/4" = 1'	ASCO P. OVER
DESIGNED BY: RYN 30-47	DATE: 10-1-11	SCALE: 1/4" = 1'	ASCO P. OVER
CHECKED BY: RYN 30-47	DATE: 10-1-11	SCALE: 1/4" = 1'	ASCO P. OVER
PROJECT NO: 754577-053	DATE: 10-1-11	SCALE: 1/4" = 1'	ASCO P. OVER
DESIGNED BY: RYN 30-47	DATE: 10-1-11	SCALE: 1/4" = 1'	ASCO P. OVER
CHECKED BY: RYN 30-47	DATE: 10-1-11	SCALE: 1/4" = 1'	ASCO P. OVER
PROJECT NO: 754577-053	DATE: 10-1-11	SCALE: 1/4" = 1'	ASCO P. OVER
DESIGNED BY: RYN 30-47	DATE: 10-1-11	SCALE: 1/4" = 1'	ASCO P. OVER
CHECKED BY: RYN 30-47	DATE: 10-1-11	SCALE: 1/4" = 1'	ASCO P. OVER
PROJECT NO: 754577-053	DATE: 10-1-11	SCALE: 1/4" = 1'	ASCO P. OVER
DESIGNED BY: RYN 30-47	DATE: 10-1-11	SCALE: 1/4" = 1'	ASCO P. OVER
CHECKED BY: RYN 30-47	DATE: 10-1-11	SCALE: 1/4" = 1'	ASCO P. OVER
PROJECT NO: 754577-053	DATE: 10-1-11	SCALE: 1/4" = 1'	ASCO P. OVER
DESIGNED BY: RYN 30-47	DATE: 10-1-11	SCALE: 1/4" = 1'	ASCO P. OVER
CHECKED BY: RYN 30-47	DATE: 10-1-11	SCALE: 1/4" = 1'	ASCO P. OVER
PROJECT NO: 754577-053	DATE: 10-1-11	SCALE: 1/4" = 1'	ASCO P. OVER
DESIGNED BY: RYN 30-47	DATE: 10-1-11	SCALE: 1/4" = 1'	ASCO P. OVER
CHECKED BY: RYN 30-47	DATE: 10-1-11	SCALE: 1/4" = 1'	ASCO P. OVER
PROJECT NO: 754577-053	DATE: 10-1-11	SCALE: 1/4" = 1'	ASCO P. OVER
DESIGNED BY: RYN 30-47	DATE: 10-1-11	SCALE: 1/4" = 1'	ASCO P. OVER
CHECKED BY: RYN 30-47	DATE: 10-1-11	SCALE: 1/4" = 1'	ASCO P. OVER
PROJECT NO: 754577-053	DATE: 10-1-11	SCALE: 1/4" = 1'	ASCO P. OVER
DESIGNED BY: RYN 30-47	DATE: 10-1-11	SCALE: 1/4" = 1'	ASCO P. OVER
CHECKED BY: RYN 30-47	DATE: 10-1-11	SCALE: 1/4" = 1'	ASCO P. OVER
PROJECT NO: 754577-053	DATE: 10-1-11	SCALE: 1/4" = 1'	ASCO P. OVER
DESIGNED BY: RYN 30-47	DATE: 10-1-11	SCALE: 1/4" = 1'	ASCO P. OVER
CHECKED BY: RYN 30-47	DATE: 10-1-11	SCALE: 1/4" = 1'	ASCO P. OVER
PROJECT NO: 754577-053	DATE: 10-1-11	SCALE: 1/4" = 1'	ASCO P. OVER
DESIGNED BY: RYN 30-47	DATE: 10-1-11	SCALE: 1/4" = 1'	ASCO P. OVER
CHECKED BY: RYN 30-47	DATE: 10-1-11	SCALE: 1/4" = 1'	ASCO P. OVER
PROJECT NO: 754577-053	DATE: 10-1-11	SCALE: 1/4" = 1'	ASCO P. OVER
DESIGNED BY: RYN 30-47	DATE: 10-1-11	SCALE: 1/4" = 1'	ASCO P. OVER
CHECKED BY: RYN 30-47	DATE: 10-1-11	SCALE: 1/4" = 1'	ASCO P. OVER
PROJECT NO: 754577-053	DATE: 10-1-11	SCALE: 1/4" = 1'	ASCO P. OVER
DESIGNED BY: RYN 30-47	DATE: 10-1-11	SCALE: 1/4" = 1'	ASCO P. OVER
CHECKED BY: RYN 30-47	DATE: 10-1-11	SCALE: 1/4" = 1'	ASCO P. OVER
PROJECT NO: 754577-053	DATE: 10-1-11	SCALE: 1/4" = 1'	ASCO P. OVER
DESIGNED BY: RYN 30-47	DATE: 10-1-11	SCALE: 1/4" = 1'	ASCO P. OVER
CHECKED BY: RYN 30-47	DATE: 10-1-11	SCALE: 1/4" = 1'	ASCO P. OVER
PROJECT NO: 754577-053	DATE: 10-1-11	SCALE: 1/4" = 1'	ASCO P. OVER
DESIGNED BY: RYN 30-47	DATE: 10-1-11	SCALE: 1/4" = 1'	ASCO P. OVER
CHECKED BY: RYN 30-47	DATE: 10-1-11	SCALE: 1/4" = 1'	ASCO P. OVER
PROJECT NO: 754577-053	DATE: 10-1-11	SCALE: 1/4" = 1'	ASCO P. OVER
DESIGNED BY: RYN 30-47	DATE: 10-1-11	SCALE: 1/4" = 1'	ASCO P. OVER
CHECKED BY: RYN 30-47	DATE: 10-1-11	SCALE: 1/4" = 1'	ASCO P. OVER
PROJECT NO: 754577-053	DATE: 10-1-11	SCALE: 1/4" = 1'	ASCO P. OVER
DESIGNED BY: RYN 30-47	DATE: 10-1-11	SCALE: 1/4" = 1'	ASCO P. OVER
CHECKED BY: RYN 30-47	DATE: 10-1-11	SCALE: 1/4" = 1'	ASCO P. OVER
PROJECT NO: 754577-053	DATE: 10-1-11	SCALE: 1/4" = 1'	ASCO P. OVER
DESIGNED BY: RYN 30-47	DATE: 10-1-11	SCALE: 1/4" = 1'	ASCO P. OVER
CHECKED BY: RYN 30-47	DATE: 10-1-11	SCALE: 1/4" = 1'	ASCO P. OVER
PROJECT NO: 754577-053	DATE: 10-1-11	SCALE: 1/4" = 1'	ASCO P. OVER
DESIGNED BY: RYN 30-47	DATE: 10-1-11	SCALE: 1/	

8 7 6 5 4 3 2 1

D

C

B

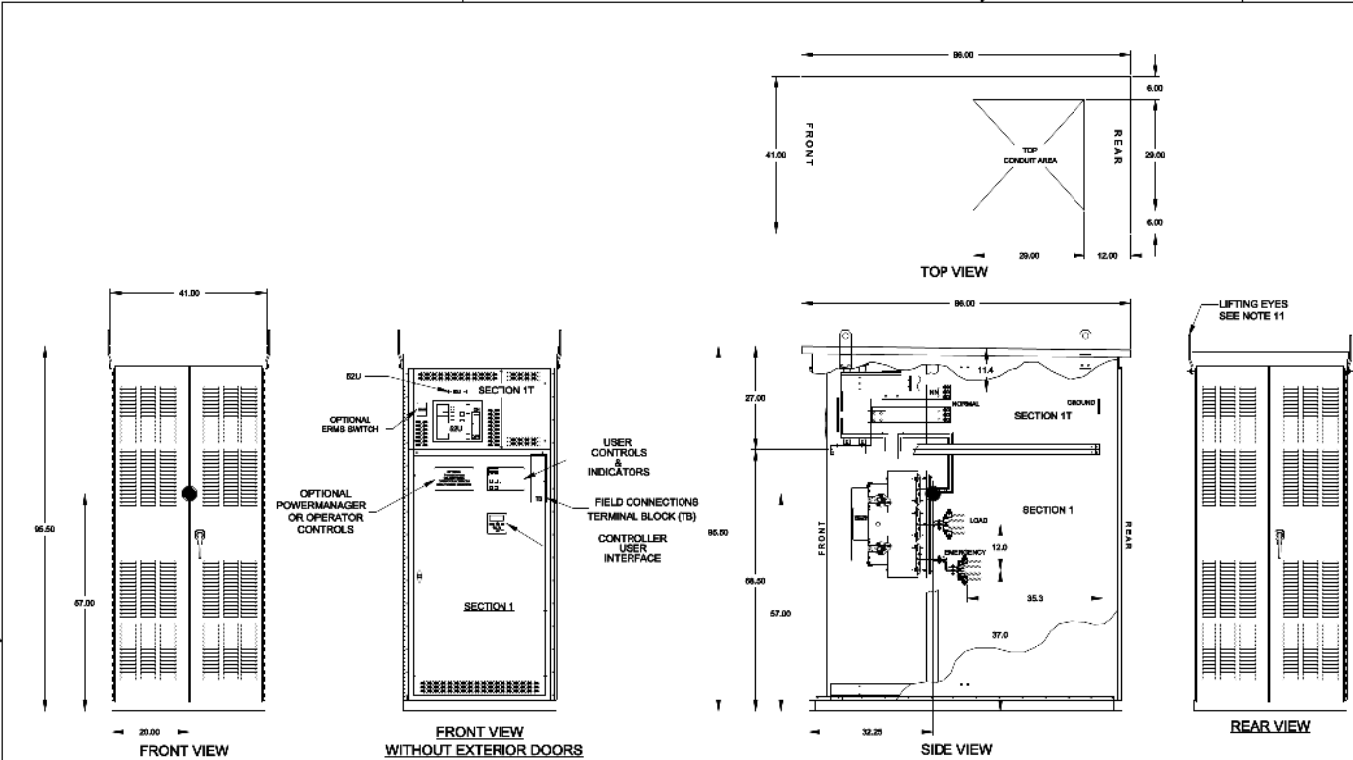
A

D

C

B

A



### GENERAL NOTES

1. FLOOR MOUNTED ENCLOSURE.  
TYPE 3R CONSTRUCTED FROM CODE GAUGE STEEL.  
FINISH: TYPE 3R, ANSI 61 GRAY POLYESTER SEMI GLOSS ELECTROSTATIC POWDER.  
TYPE 3RX EXTERIOR CONSTRUCTED FROM CODE GAUGE STAINLESS STEEL.  
(R) EXTERIOR CONSTRUCTED FROM TYPE 304 STAINLESS STEEL.  
(S) EXTERIOR CONSTRUCTED FROM TYPE 316 STAINLESS STEEL.
2. EXTERIOR DOORS HAVE PADLOCKABLE HANDLES WITH 3-POINT LATCH
3. DESIGNED FOR FRONT & REAR ACCESS.
4. RECOMMENDED CLEARANCES: FRONT: 36" REAR: 36"
5. EXTERIOR VENTS ARE SUPPLIED WITH POLYESTER DUST FILTERS.
6. LIFTING PLATES: SECTIONS ARE SUPPLIED WITH LIFTING PLATES. INSPECT PLATES FOR DAMAGE AND TORQUE BOLTS TO 45 FT LBS BEFORE USE. REFER TO ANSINEMA PB 2.1 FOR PROPER HANDLING OF EQUIPMENT. AFTER INSTALLATION OF SECTION, REMOVE LIFTING PLATES. REINSTALL BOLTS INTO EXTERIOR HOLES AND TORQUE TO APPROXIMATELY 20 FT LBS.
7. SECTION 1 AND SECTION 1T SHIP AS ONE UNIT.
8. CENTER OF GRAVITY
9. APPROXIMATE WEIGHT: 3250LB.

### SYSTEM NOTES

1. SYSTEM RATING: 2500 AMPS, 3000 AMPS, 3k, 4W.  
SHORT CIRCUIT RATING: 100,000 RMS SYM AMPERES @ 480V.  
THE EMERGENCY SOURCE MUST BE PROTECTED BY AREMOTEC OVERCURRENT PROTECTION DEVICE AS LISTED ON THE MARKINGS OR THE TRANSFER SWITCH.
2. ALL BUS IS SILVER-PLATED COPPER, BASED ON 800A PER SQ. IN. DENSITY.
3. GROUND BUS: 20% RATED.
4. NEUTRAL BUS: 100% RATED.
5. AFFIXABLE LABELS: U.L. 891- SUITABLE ONLY FOR USE AS SERVICE EQUIPMENT.

### TRANSFER SWITCH

1. G FRAME AUTOMATIC TRANSFER SWITCH 2500A - 3000A
2. TRANSFER SWITCH RATING: 2500 AMPS, 3000 AMPS.  
SHORT CIRCUIT RATING WHEN PROTECTED BY A CIRCUIT BREAKER  
TIME RESPONSE, MAXIMUM 0.05 SECONDS: 100,000 RMS SYM @ 480V
3. A FULL RATED NEUTRAL CONNECTION FOR EACH SOURCE AND THE LOAD IS OPTIONAL. WHEN PROVIDED IT IS IN ONE OF THE FOLLOWING FORMATS.  
A. SOLID NEUTRAL  
B. SWITCHED NEUTRAL POLE  
C. OVERLAPPING NEUTRAL POLE
4. U.L. 1008

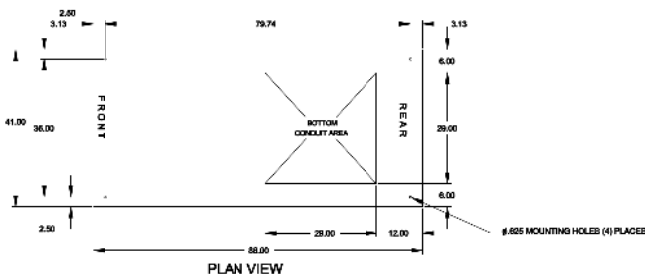
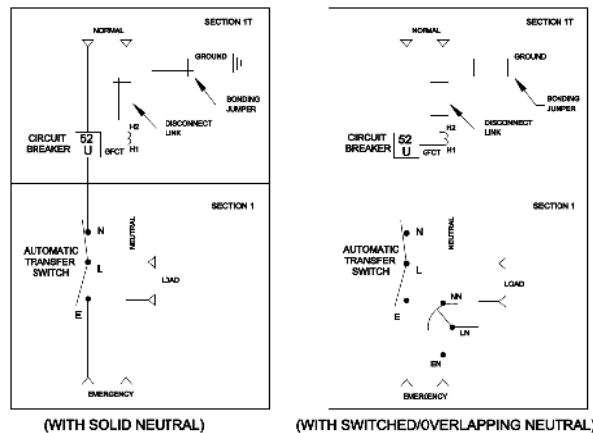
### TERMINATIONS 2500-3000 AMPS

1. SUPPLIED WITH MECHANICAL (SCREW TYPE) LUGS FOR CU/AL CABLE.  
NORMAL: (12) 1/0 - 800MCM PER PHASE & NEUTRAL  
LOAD: (12) 1/0 - 800MCM PER PHASE & NEUTRAL  
EMERGENCY: (12) 1/0 - 800MCM PER PHASE & NEUTRAL  
GROUND: (25) 1/0 - 600MCM  
A. SUITABLE WIRE BENDING SPACE IS PROVIDED AS PER NEC.
2. OPTIONAL LUGS MAY BE SUPPLIED.

### SERVICE ENTRANCE BREAKER: ITEM 52U

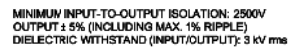
1. SQUARE "D" 100% RATED, TYPE NW, 3000AF/3000AT OR 2500AF/2500AT STATIONARY MOUNTED  
MANUALLY OPERATED, WITH LONG DELAY, SHORT DELAY, INSTANTANEOUS AND GROUND FAULT TRIP SETTINGS
2. OPTIONAL ENERGY REDUCTION MAINTENANCE SETTING (ERMS) SYSTEM MAY BE SUPPLIED.
3. U.L. 489

### ONE LINE DIAGRAMS

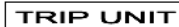


PROJECT NAME:		MOUNTING	
OUTLINE		GAUS 2500A - 3000A, NW SERVICE ENTRANCE BREAKER ON NORMAL	
TYPE 3R/3RX 96 X 41 X 86			
DESIGNED BY	REVIEWED BY	DATE	DATE
7/24/2017	7/24/2017	7/24/2017	7/24/2017
PROPERTY OF ASCO POWER TECHNOLOGIES, LLC. NOT TO BE REPRODUCED OR TRANSMITTED IN ANY FORM OR BY ANY MEANS, ELECTRONIC OR MECHANICAL, INCLUDING PHOTOCOPYING, RECORDING, OR BY ANY INFORMATION STORAGE AND RETRIEVAL SYSTEM.		COMPUTER GENERATED DRAWING	
754577-053		DS	
ASCO POWER TECHNOLOGIES, LLC		7/24/2017	

MINIMUM INPUT-TO-OUTPUT ISOLATION: 2500V  
OUTPUT  $\pm 5\%$  (INCLUDING MAX. 1% RIPPLE)  
DIELECTRIC WITHSTAND (INPUT/OUTPUT): 3 kV rms



## TRIP UNIT



<b>F</b>	257650	TRD	MM	10/23/15
	SEE ECN			
<b>E</b>	227403	TRD	WK	05/13/10
	SEE ECN			
<b>D</b>	226452	AE	BK	03/16/10
	SEE ECN			
<b>C</b>	223197	DAJ	BK	10/20/09
	SEE ECN			
<b>B</b>	211947	MJB	BK	2/7/07
	SEE ECN			
<b>-</b>	167055	CC	BK	05/13/04
	ISSUE			

REV. TO SHEET	ECN NO.	BY	APP.	DATE
------------------	---------	----	------	------



	BY	DATE
DRAWN BY	CC	06/13/04
CHECKED	BK	06/13/04
PROJECT APPROVAL	BK	06/13/04
FINAL APPROVAL		

ASSEM. REF. NO.

PROPERTY OF ASCO POWER TECHNOLOGIES. USE PERMITTED FOR OUR  
WORK ONLY. ALL RIGHTS OF DESIGN OR INVENTION ARE RESERVED.

COMPUTER GENERATED DRAWING

SCALE SIZE BS

DWG. NO.

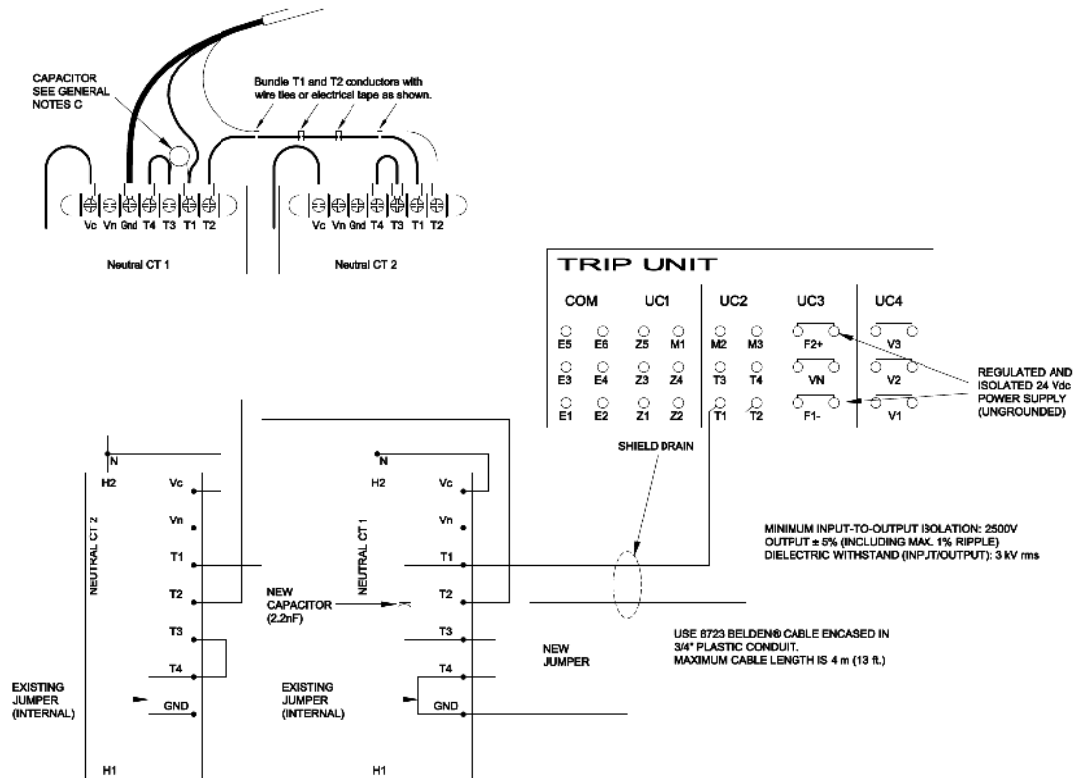
—758574

DRAWING F  
REV. ECN 257650

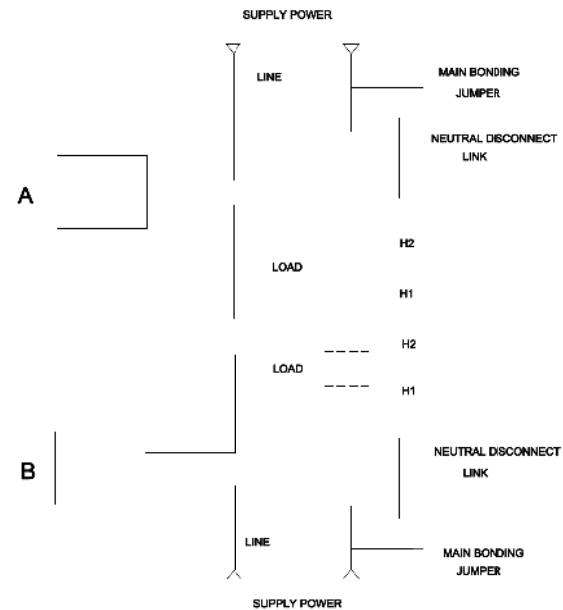
SHEET  
1 OF 2

**ASCO®** ASCO POWER TECHNOLOGIES, L.P.  
FLORHAM PARK, NEW JERSEY 07932 U.S.A.

# WIRING SCHEMATIC FOR 3200-6000 A NW CIRCUIT BREAKERS



## LINE DIAGRAM FOR NW BREAKER



F	257650	TRD	MM	10/23/15
SEE ECN				
E	227403	TRD	WK	05/13/10
SEE ECN				
D	226452	AE	BK	03/16/10
SEE ECN				
C	223197	DAJ	BK	10/20/09
SEE ECN				
B	211947	MJB	BK	2/7/07
SEE ECN				
-	167055	CC	BK	05/13/04
ISSUE				

PROJECT NAME:

REV. TO SHEET ECN NO. BY APP. DATE

## GENERAL NOTES

- IF LOAD IS CONNECTED TO LOWER END OF CIRCUIT BREAKER, CONNECT THE LOAD NEUTRAL TO THE H1 END OF THE NEUTRAL CURRENT TRANSFORMER.
- IF SUPPLY POWER IS CONNECTED TO THE LOWER END OF THE CIRCUIT BREAKER, CONNECT THE SUPPLY NEUTRAL TO THE H1 END OF THE NEUTRAL CURRENT TRANSFORMER.
- CAPACITOR 2.2NF IS PROVIDED WITH CIRCUIT BREAKER.

## GFS CIRCUITRY.

DRAWN BY	CC	05/13/04
CHECKED	BK	05/13/04
PROJECT APPROVAL	BK	05/13/04
FINAL APPROVAL		

MANUFACTURING TOLERANCES TO BE IN  
ACCORDANCE WITH ASCO PROCEDURE MP-4-003.  
FOR PLASTIC PARTS SEE MP-4-005

ASSEM. REF. NO.

PROPERTY OF ASCO POWER TECHNOLOGIES. USE PERMITTED FOR OUR  
WORK ONLY. ALL RIGHTS OF DESIGN OR INVENTION ARE RESERVED.

**ASCO**® ASCO POWER TECHNOLOGIES, L.P.  
FLORHAM PARK, NEW JERSEY 07932 U.S.A.



COMPUTER GENERATED DRAWING
SCALE SIZE BS
DWG. NO. 758574
DRAWING REV. F ECN NO. 257650 SHEET 2 OF 2