

Transfer Switch Details

#2	ATS	AMPS: 1200	QTY: 2
Product	: Series 300	Catalog Number	: H03AUSB31200NGXM
Service Voltage / Hz	: 480V/60Hz	Optional Accessories	: 11BE,44G
Bypass Isolation	: Not Applicable	Product Description	: 300 Series, Automatic Service Entrance Transfer Switch
No. of Switched Poles: 4	: 4	Neutral Configuration	: Switched [B]
Withstand Rating:	: See WCR Table Below	No. of Cables & Lug Size	: See Applicable Outline Drawing
Frame = H, Switch Rating = 1200, Series = 300			
Enclosure	: 3R(M)-UL Type 3R secure double door enclosure (See Disclaimer 3)	Service	: Three Phase, 4-wire
Extended Warranty	: Not Included	Markings	:

#	ACCESSORY DESCRIPTIONS	
	Accessory Code	Description
1	11BE	Adds the following features to the Group G controller: (1) Serial RS-485 Modbus Communications (2) Multi-Schedule Engine Exerciser (3) a 300 Entry Event Log and (4) a common alarm output function. When applied on 3-phase systems it also enables: (1) 3-Phase Emergency Source VLL sensing (2) Phase Rotation Monitoring (3) Emergency Source VLL Unbalance Monitoring.
2	44G	Strip heater w/ thermostat, wired to load terminals: 208-600 volts



1. FLOOR MOUNTED ENCLOSURE.
TYPE 3R CONSTRUCTED FROM CODE GAUGE STEEL.
FINISH: TYPE 3R, ANSI #1 GRAY POLYESTER SEMI GLOSS ELECTROSTATIC POWDER.
TYPE 3RX EXTERIOR CONSTRUCTED FROM CODE GAUGE STAINLESS STEEL.
(R) EXTERIOR CONSTRUCTED FROM TYPE 304 STAINLESS STEEL.
(S) EXTERIOR CONSTRUCTED FROM TYPE 316 STAINLESS STEEL.
2. EXTERIOR DOORS HAVE PADLOCKABLE HANDLES WITH 3-POINT LATCH
3. DESIGNED FOR FRONT & REAR ACCESS.
4. RECOMMENDED CLEARANCES: FRONT: 36" REAR: 30"
5. EXTERIOR VENTS ARE SUPPLIED WITH POLYESTER DUST FILTERS.
6. LIFTING PLATES: SECTIONS ARE SUPPLIED WITH LIFTING PLATES. INSPECT PLATES FOR DAMAGE AND TORQUE BOLTS TO 45 FT LBS BEFORE USE. REFER TO ANSIMEMA PB 21 FOR PROPER HANDLING OF EQUIPMENT: AFTER INSTALLATION OF SECTION, REMOVE LIFTING PLATES. REINSTALL BOLTS INTO EXTERIOR HOLES AND TORQUE TO APPROXIMATELY 20 FT LBS.
7. EXTERIOR VENTS:
1000A: NO VENTS.
1200A: VENTS ARE SUPPLIED WITH POLYESTER DUST FILTERS.
8. ^{or} CENTER OF GRAVITY
9. APPROXIMATE WEIGHT : 2050 lbs

1. SYSTEM RATING: 1000 AMPS, 1200 AMPS.
SHORT CIRCUIT RATING: 50,000 RMS SYM @ 480V.
THE EMERGENCY SOURCE MUST BE PROTECTED BY A REMOTE OVERCURRENT
PROTECTION DEVICE AS LISTED ON THE MARKINGS ON THE TRANSFER SWITCH.
2. ALL BUS IS SILVER-PLATED COPPER, BASED ON 1000A PER SQ. IN. DENSITY.
3. GROUND: 20% RATED.
4. NEUTRAL: 100% RATED.
5. APPLICABLE LABEL(S): U.L. 891, SUITABLE ONLY FOR USE AS SERVICE EQUIPMENT.

1. H FRAME AUTOMATIC TRANSFER SWITCH 1000A - 1200A.
2. TRANSFER SWITCH RATING: 1000 AMPS, 1200 AMPS.
SHORT CIRCUIT RATING WHEN PROTECTED BY A CIRCUIT BREAKER
TIME RESPONSE, MAXIMUM 0.05 SECONDS: 50,000 RMS SYM @ 480V.
SPECIFIC BREAKER RATING: 65,000 RMS SYM @ 480V.
3. A FULL RATED NEUTRAL CONNECTION FOR EACH SOURCE AND THE LOAD IS OPTIONAL.
WHEN PROVIDED IT IS IN ONE OF THE FOLLOWING FORMATS.
 - A. SOLID NEUTRAL
 - B. SWITCHED NEUTRAL POLE
 - C. OVERLAPPING NEUTRAL POLE
4. UL 1008

1. SUPPLIED WITH MECHANICAL (SCREW TYPE) LUGS FOR CU/AL CABLE.
NORMAL: (4) 1/0 - 600MCM PER PHASE & NEUTRAL
LOAD: (4) 1/0 - 600MCM PER PHASE & NEUTRAL
EMERGENCY: (4) 1/0 - 600MCM PER PHASE & NEUTRAL
GROUND: (12) 1/0 - 600MCM
A. SUITABLE WIRE BENDING SPACE IS PROVIDED AS PER NEC.

2. OPTIONAL LUGS MAY BE SUPPLIED.

1. SQUARE "D" 90% INSTALLED TYPE "RUF, 3000AF/1000AT, 3000AF/1200AT, STATIONARY MOUNTED, MANUALLY OPERATED, WITH LONG DELAY, SHORT DELAY, INSTANTANEOUS AND GROUND FAULT TRIP SETTINGS. SHORT CIRCUIT RATING: AIC 65,000 RMS SYM @ 480V.
2. OPTIONAL ENERGY REDUCTION MAINTENANCE SETTING SYSTEM MAY BE SUPPLIED.
3. OPTIONAL 100% RATED
4. U.L. 489

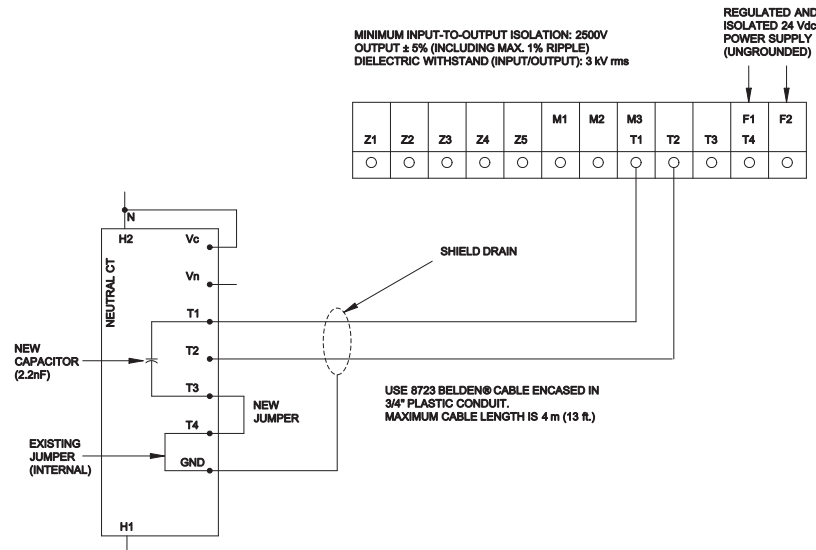


(WITH SOLID NEUTRAL)

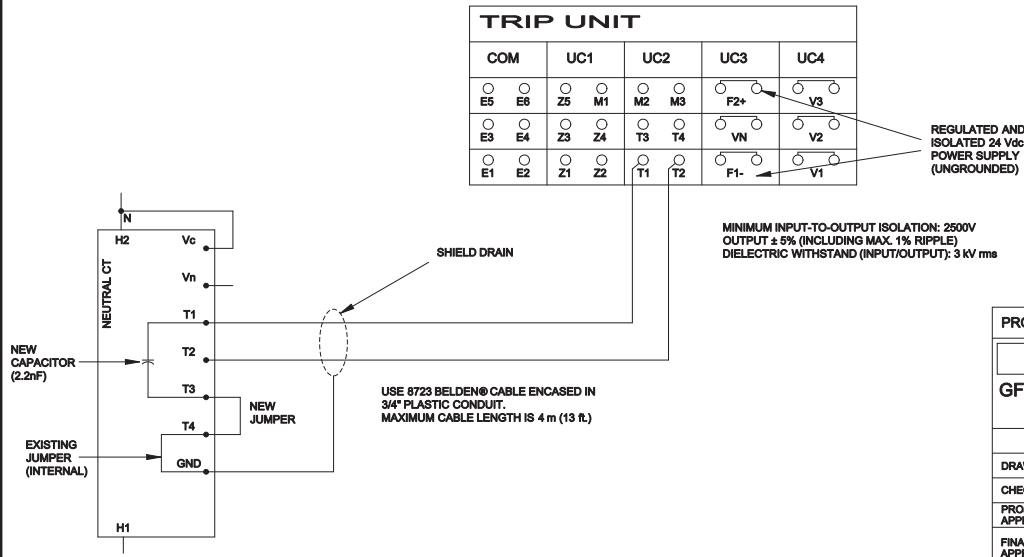
(WITH SWITCHED/OVERLAPPING NEUTRAL)

[illegible][illegible]

WIRING SCHEMATIC FOR POWERPACT P- & R-FRAME CIRCUIT BREAKERS



WIRING SCHEMATIC FOR 800-3000 A NT/NW CIRCUIT BREAKERS

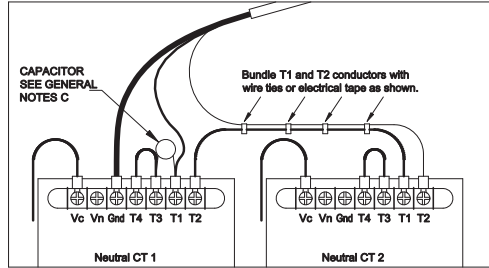


FEDCB-	257650	TRD	MM	10/23/15
	SEE ECN			
	227403	TRD	WK	05/13/10
	SEE ECN			
	226452	AE	BK	03/16/10
	SEE ECN			
	223197	DAJ	BK	10/20/09
	SEE ECN			
	211947	MJB	BK	2/7/07
	SEE ECN			
	167055	CC	BK	05/13/04
	ISSUE			

PROJECT NAME:				REV. TO SHEET	ECN NO.	BY	APP.	DATE															
<div> <div></div> <div></div> </div>																							
GFS CIRCUITRY.																							
<table> <tr> <td>DRAWN BY</td> <td>CC</td> <td>DATE</td> <td>05/13/04</td> </tr> <tr> <td>CHECKED</td> <td>BK</td> <td>DATE</td> <td>05/13/04</td> </tr> <tr> <td>PROJECT APPROVAL</td> <td>BK</td> <td>DATE</td> <td>05/13/04</td> </tr> <tr> <td>FINAL APPROVAL</td> <td></td> <td></td> <td></td> </tr> </table>				DRAWN BY	CC	DATE	05/13/04	CHECKED	BK	DATE	05/13/04	PROJECT APPROVAL	BK	DATE	05/13/04	FINAL APPROVAL				MANUFACTURING TOLERANCES TO BE IN ACCORDANCE WITH ASCO PROCEDURE MP-4-003. FOR PLASTIC PARTS SEE MP-4-055.		ASSEM. REF. NO.	
DRAWN BY	CC	DATE	05/13/04																				
CHECKED	BK	DATE	05/13/04																				
PROJECT APPROVAL	BK	DATE	05/13/04																				
FINAL APPROVAL																							
PROPERTY OF ASCO POWER TECHNOLOGIES. USE PERMITTED FOR OUR WORK ONLY. ALL RIGHTS OF DESIGN OR INVENTION ARE RESERVED.				<div> <div></div> <div></div> </div>		COMPUTER GENERATED DRAWING																	
				SCALE	SIZE	BS																	
				DWG. NO. 758574																			
DRAWING REV.				ECN NO.	257650	SHEET 1 OF 2																	

ASCO® ASCO POWER TECHNOLOGIES, L.P.
FLORHAM PARK, NEW JERSEY 07932 U.S.A.

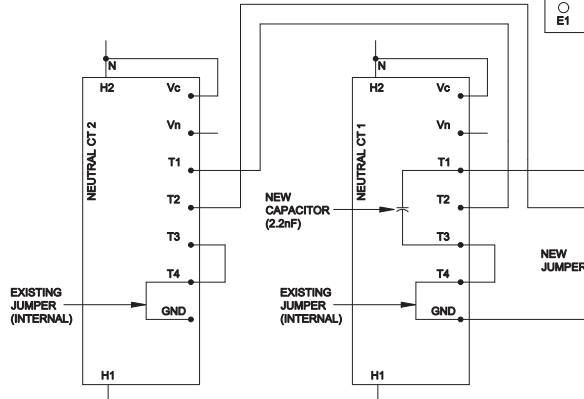
WIRING SCHEMATIC FOR 3200-6000 A NW CIRCUIT BREAKERS



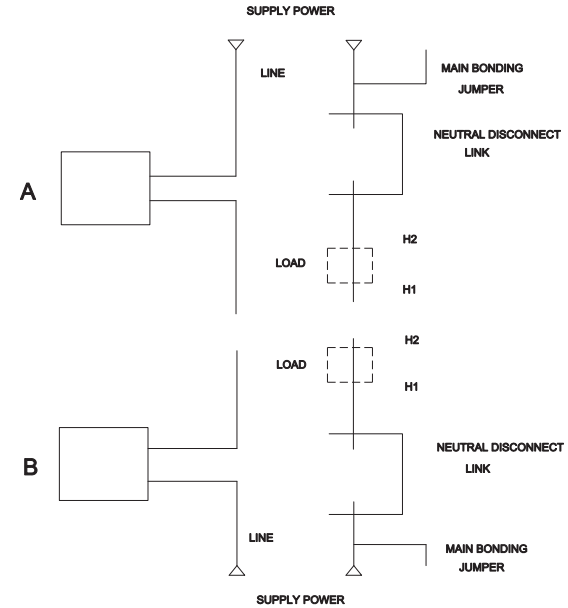
TRIP UNIT									
COM		UC1		UC2		UC3		UC4	
○ E5	○ E6	○ Z5	○ M1	○ M2	○ M3	○ F2+	○ V3	REGULATED AND ISOLATED 24 Vdc POWER SUPPLY (UNGROUNDING)	
○ E3	○ E4	○ Z3	○ Z4	○ T3	○ T4	○ VN	○ V2		
○ E1	○ E2	○ Z1	○ Z2	○ T1	○ T2	○ F1-	○ V1		

MINIMUM INPUT-TO-OUTPUT ISOLATION: 2500V
OUTPUT ± 5% (INCLUDING MAX. 1% RIPPLE)
DIELECTRIC WITHSTAND (INPUT/OUTPUT): 3 kV rms

USE 8723 BELDEN® CABLE ENCASED IN
3/4" PLASTIC CONDUIT.
MAXIMUM CABLE LENGTH IS 4 m (13 ft.)



LINE DIAGRAM FOR NW BREAKER



F	257650	TRD	MM	10/23/15
	SEE ECN			
E	227403	TRD	WK	05/13/10
	SEE ECN			
D	226452	AE	BK	03/16/10
	SEE ECN			
C	223197	DAJ	BK	10/20/09
	SEE ECN			
B	211947	MJB	BK	2/7/07
	SEE ECN			
-	167055	CC	BK	05/13/04
	ISSUE			

GENERAL NOTES

- IF LOAD IS CONNECTED TO LOWER END OF CIRCUIT BREAKER, CONNECT THE LOAD NEUTRAL TO THE H1 END OF THE NEUTRAL CURRENT TRANSFORMER.
- IF SUPPLY POWER IS CONNECTED TO THE LOWER END OF THE CIRCUIT BREAKER, CONNECT THE SUPPLY NEUTRAL TO THE H1 END OF THE NEUTRAL CURRENT TRANSFORMER.
- CAPACITOR 2.2NF IS PROVIDED WITH CIRCUIT BREAKER.

PROJECT NAME:

REV. TO SHEET ECN NO. BY APP. DATE

GFS CIRCUITRY.



	BY	DATE	MANUFACTURING TOLERANCES TO BE IN ACCORDANCE WITH ASCO PROCEDURE MP-4-003. FOR PLASTIC PARTS SEE MP-1-055		ASSEM. REF. NO.	COMPUTER GENERATED DRAWING		
DRAWN BY	CC	05/13/04				SCALE	SIZE	BS
CHECKED	BK	05/13/04	PROPERTY OF ASCO POWER TECHNOLOGIES, U.S. PERMITTED FOR OUR WORK ONLY. ALL RIGHTS OF DESIGN OR INVENTION ARE RESERVED.			DWG. NO.		
PROJECT APPROVAL	BK	05/13/04				758574		
FINAL APPROVAL						DRAWING REV.	ECN NO.	SHEET
							257650	2 OF 2

ASCO® ASCO POWER TECHNOLOGIES, L.P.
FLORHAM PARK, NEW JERSEY 07932 U.S.A.