

Transfer Switch Details

Transfer Switch Details

| #11 | ATS | AMPS: 1200 | QTY: 2 |
|---|--|--------------------------|---|
| Product | : Series 300 | Catalog Number | : H03ATSB31200CGXM |
| Service Voltage / Hz | : 208V/60Hz | Optional Accessories | : 11BE,44G |
| Bypass Isolation | : Not Applicable | Product Description | : 300 Series, Automatic Open Transition Transfer Switch |
| No. of Switched Poles: 4 | : 4 | Neutral Configuration | : Switched [B] |
| Withstand Rating: | : See WCR Table Below | No. of Cables & Lug Size | : 4, 1/0 AWG to 600 MCM |
| Frame = H, Switch Rating = 1200, Series = 300 | | | |
| Enclosure | : 3R(M)-UL Type 3R secure double door enclosure (See Disclaimer 3) | Service | : Three Phase, 4-wire |
| Extended Warranty | : Not Included | Markings | : |

| # | ACCESSORY DESCRIPTIONS | |
|---|------------------------|---|
| | Accessory Code | Description |
| 1 | 11BE | Adds the following features to the Group G controller: (1) Serial RS-485 Modbus Communications (2) Multi-Schedule Engine Exerciser (3) a 300 Entry Event Log and (4) a common alarm output function. When applied on 3-phase systems it also enables: (1) 3-Phase Emergency Source VLL sensing (2) Phase Rotation Monitoring (3) Emergency Source VLL Unbalance Monitoring. |
| 2 | 44G | Strip heater w/ thermostat, wired to load terminals: 208-600 volts |

THREE PHASE WIRING FOR ASCO 300 SERIES TRANSFER SWITCHES TYPES H3ATS & H3NTS RATED 800, 1000 & 1200 AMPERES

GENERAL INFORMATION

COMMON ALARM & NOT IN AUTO SIGNALING FEATURES

A SET OF FORM C CONTACTS IS PROVIDED ON THE GROUP G CONTROLLER AS "OP1". THE FEATURE SETTING OF "OP1" CAN BE SET TO OPERATE THE CONTACTS AS A "NOT IN AUTO" SIGNAL.

WHEN "OP1" IS SET TO "NOT IN AUTO", THE OUTPUT CONTACTS CHANGE POSITION WHEN THE TRANSFER IS BEING INHIBITED FROM TRANSFERRING TO THE EMERGENCY SOURCE (FEATURE 348) OR THE TRANSFER SWITCH HAS BEEN SET FOR NON-AUTOMATIC (MANUAL) OPERATION.

WHEN OPTIONAL ACCESSORY 11B "SOFTWARE BUNDLE" IS PART OF THE TRANSFER SWITCH ASSEMBLY, "OP1" MAY ALTERNATIVELY BE SET FOR A "COMMON ALARM" SIGNAL. THE OUTPUT CONTACTS CHANGE POSITION WHEN A "COMMON ALARM" IS NOT PRESENT AND RESET WHEN A "COMMON ALARM" CONDITION IS PRESENT. THE "COMMON ALARM" SIGNAL CONDITIONS ARE SELECTABLE.

ADDITIONAL "COMMON ALARM" AND "NOT IN AUTO" CONTACTS ARE AVAILABLE WHEN OPTIONAL ACCESSORY 18RX (RELAY EXPANSION MODULE) IS INCLUDED IN THE TRANSFER SWITCH ASSEMBLY. OUTPUT CONTACTS "OP2 AND/OR OP3" WILL PROVIDE SIGNAL FUNCTIONS WHEN THE FEATURE SETTING OF EACH IS SET TO OPERATE AS "COMMON ALARM" OR "NOT IN AUTO".

CONTACTS ARE RATED 5 AMPS RESISTIVE AT 30 VDC MAXIMUM, 100 mA AT 5 VDC MINIMUM.

REFER TO USER'S GUIDE, ASCO GROUP G CONTROLLER FOR AUTOMATIC & NON-AUTOMATIC TRANSFER SWITCHES, PART NUMBER 381333-400 FOR SETTING INFORMATION.

EXTERNAL POWER SUPPLY COMPATIBILITY

USE OF AN EXTERNAL POWER SUPPLY IS USEFUL WHEN REQUIRED TO EXTEND THE FOLLOWING CONTROLLER TIME DELAYS BEYOND 6 SECONDS:

FEATURE 1C - OVERRIDE MOMENTARY NORMAL SOURCE OUTAGES
FEATURE 1F - OVERRIDE MOMENTARY EMERGENCY SOURCE OUTAGES

AN EXTERNAL POWER SUPPLY IS ALSO USEFUL WHEN THE TRANSFER SWITCH IS USED WITH COMMUNICATIONS FEATURES BY ENABLING THE CONTROLLER TO CONTINUE COMMUNICATING.

AN EXTERNAL POWER SOURCE MAY BE PROVIDED TO THE CONTROLLER, UNTIL THE NORMAL SOURCE OR EMERGENCY SOURCE IS AVAILABLE, BY USE OF:

- AN EXTERNAL 24 VDC POWER SUPPLY WITH ACCESSORY 18RX (RELAY EXPANSION MODULE) OR
- OPTIONAL ACCESSORY 1UP (UNINTERRUPTIBLE POWER SUPPLY MODULE)

EXTERNAL 24 VDC POWER SUPPLY "1C"

AN EXTERNAL 24 VDC POWER SUPPLY MAY BE USED TO POWER THE CONTROLLER WHEN ACCESSORY 18RX (RELAY EXPANSION MODULE) IS INCLUDED IN THE TRANSFER SWITCH ASSEMBLY. OUTPUT CONTACTS "OP2" AND/OR "OP3" WILL PROVIDE EXTERNAL 24 VDC POWER SUPPLY FUNCTIONALITY WHEN THE FEATURE SETTING IS SET TO OPERATE AS "1C". ADDITIONALLY, JUMPERS MUST BE RECONFIGURED ON ACCESSORY 18RX (RELAY EXPANSION MODULE) TO ENABLE THIS FUNCTION AS FOLLOWS:

REMOVE JUMPERS "J1" 1-2 & "J1" 3-4
CONNECT JUMPERS "J1" 5-7 & "J1" 6-8

THE OUTPUT CONTACTS CHANGE POSITION WHEN EITHER THE NORMAL SOURCE OR EMERGENCY SOURCE IS AVAILABLE AND RESET WHEN NEITHER SOURCE IS AVAILABLE. THE "OP2" AND/OR "OP3" CONTACT SWITCHES CUSTOMER PROVIDED 24 VDC FROM THE EXTERNAL POWER SUPPLY TO THE CONTROLLER.

REFER TO USER'S GUIDE, ASCO GROUP G CONTROLLER FOR AUTOMATIC & NON-AUTOMATIC TRANSFER SWITCHES, PART NUMBER 381333-400 FOR SETTING INFORMATION.

ACCESSORY 1UP (UNINTERRUPTIBLE POWER SUPPLY):
WHEN OPTIONAL ACCESSORY 1UP IS INCLUDED IN THE TRANSFER SWITCH ASSEMBLY, THE CONTROLLER IS PROVIDED WITH LIMITED RESERVE POWER (APPROXIMATELY 3 MINUTES).

LOAD CURRENT METERING

WHEN OPTIONAL ACCESSORY 230B IS PART OF THE TRANSFER SWITCH ASSEMBLY, THREE PHASE CURRENT MEASUREMENTS ARE AVAILABLE FOR DISPLAY ON THE GROUP G CONTROLLER.

REFER TO USER'S GUIDE, ASCO GROUP G CONTROLLER FOR AUTOMATIC & NON-AUTOMATIC TRANSFER SWITCHES, PART NUMBER 381333-400 FOR INFORMATION ON USE.

ADVANCED FUNCTION SOFTWARE BUNDLE

WHEN OPTIONAL ACCESSORY 11B IS PART OF THE TRANSFER SWITCH ASSEMBLY, AN ADVANCED FUNCTION SOFTWARE BUNDLE IS AVAILABLE TO PERFORM THE FOLLOWING FUNCTIONS:

- SERIAL COMMUNICATIONS (RS-485)
- PROGRAMMABLE ENGINE EXERCISER
- EVENT LOG
- COMMON ALARM SIGNAL CAPABILITY ON GROUP G CONTROLLER "OP1" OUTPUT.

Ø PHASE SENSING ONLY.

- Ø PHASE EMERGENCY SOURCE SENSING.

- Ø PHASE ROTATION SENSING.

- EMERGENCY VOLTAGE UNBALANCE SENSING.

REFER TO USER'S GUIDE, ASCO GROUP G CONTROLLER FOR AUTOMATIC & NON-AUTOMATIC TRANSFER SWITCHES, PART NUMBER 381333-400 FOR INFORMATION ON THESE FUNCTIONS.

NON-AUTOMATIC (MANUAL) OPERATION

TRANSFER SWITCH ASSEMBLY FACTORY SET FOR NON-AUTOMATIC OPERATION PROVIDE USER INITIATED, ELECTRICAL OPERATION OF THE TRANSFER SWITCH TO EITHER AVAILABLE SOURCE. THE TRANSFER SWITCH ASSEMBLY IS PHYSICALLY IDENTICAL TO THAT OF THE AUTOMATIC TYPE.

WHEN THE TRANSFER SWITCH IS SET FOR NON-AUTOMATIC OPERATION, A CUSTOMER PROVIDED SELECTOR SWITCH MAY BE USED TO OPERATE IT FROM A REMOTE LOCATION.

REMOTE CONTROL FEATURES

THE FOLLOWING CONTROL PANEL INPUTS PROVIDE REMOTE CONTROL FUNCTIONS FOR THE TRANSFER SWITCH. EACH FUNCTION CAN BE IMPLEMENTED BY THE CUSTOMER PROVIDING THE FORM OF CONTROL DESCRIBED. EACH CONTROL CONTACT MUST BE SUITABLE FOR A 5 VDC LOW ENERGY CIRCUIT.

EXTERNAL FEATURE 1F: REMOTE TRANSFER TO EMERGENCY FEATURE (FOR AUTOMATIC TRANSFER TYPE ONLY) - REQUIRES A CUSTOMER SUPPLIED, NORMALLY CLOSED CONTACT. OPENING OF THE CONTACT CAUSES ENGINE START AND TRANSFER TO THE EMERGENCY SOURCE. RE-CLOSURE OF THE CONTACT ACTIVATES THE FEATURE 3A "RETRANSFER TO NORMAL (IF JUST TEST) TIME DELAY PRIOR TO RETRANSFER. IN THE EVENT THAT THE EMERGENCY SOURCE FAILS WHILE THE TRANSFER SWITCH IS CONNECTED TO EMERGENCY AND THE CUSTOMER SUPPLIED CONTACT IS OPEN, THE TRANSFER SWITCH WILL AUTOMATICALLY RETRANSFER TO THE NORMAL SOURCE.

EXTERNAL FEATURE 3B: REMOTE BYPASS OF RETRANSFER TO NORMAL TIME DELAY - REQUIRES A CUSTOMER SUPPLIED, NORMALLY CLOSED CONTACT. OPENING OF THE CONTACT BYPASSES FEATURE 3A RETRANSFER TO NORMAL DELAY & ACTIVE.

REFER TO USER'S GUIDE, ASCO GROUP G CONTROLLER FOR AUTOMATIC & NON-AUTOMATIC TRANSFER SWITCHES, PART NUMBER 381333-400 FOR SETTING INFORMATION.

ENGINE CONTROL CONTACTS

ONE SET OF FORM C CONTACTS "N1" (N1, N2, N3, N4, N5, N6, N7, N8, N9, N10) THAT CHANGE POSITION ON EXPIRATION OF THE FEATURE 1C, OVERRIDE MOMENTARY NORMAL SOURCE OUTAGES TIME DELAY, AND RESET ON EXPIRATION OF THE FEATURE 2B ENGINE COOLDOWN TIME DELAY.

AN AUXILIARY CONTACT THAT IS CLOSED WHEN THE TRANSFER SWITCH IS CONNECTED TO THE EMERGENCY SOURCE, IS CONNECTED ACROSS THE N1 CONTACT (FEATURE 7).

AN ADDITIONAL SET OF ENGINE STARTING CONTACTS ARE AVAILABLE ON THE GROUP G CONTROLLER WHEN THE FEATURE SETTING OF THE CONTROLLER OUTPUT CONTACTS "OP1" IS SET TO OPERATE AS "N1C".

ADDITIONAL, OPTIONAL ENGINE STARTING CONTACTS "N2" ARE AVAILABLE WHEN OPTIONAL ACCESSORY 18RX (RELAY EXPANSION MODULE) IS INCLUDED IN THE TRANSFER SWITCH ASSEMBLY. OUTPUT CONTACTS "OP2" AND/OR "OP3" PROVIDE THE ENGINE STARTING FUNCTION WHEN THE FEATURE SETTING OF EACH IS SET TO OPERATE AS "N2C".

CONTACTS ARE RATED 5 AMPS RESISTIVE AT 30 VDC MAXIMUM, 100 mA AT 5 VDC MINIMUM.

REFER TO USER'S GUIDE, ASCO GROUP G CONTROLLER FOR AUTOMATIC & NON-AUTOMATIC TRANSFER SWITCHES, PART NUMBER 381333-400 FOR SETTING INFORMATION.

LOAD DISCONNECT FEATURE

FEATURE 31: INCLUDES SUB-FEATURES 31F, 31G, 31H, 31I, 31J, 31K, 31L, 31M, 31N, 31O, 31P, 31Q, 31R, 31S, 31T, 31U, 31V, 31W, 31X, 31Y, 31Z, 31AA, 31AB, 31AC, 31AD, 31AE, 31AF, 31AG, 31AH, 31AI, 31AJ, 31AK, 31AL, 31AM, 31AN, 31AO, 31AP, 31AQ, 31AR, 31AS, 31AT, 31AU, 31AV, 31AW, 31AX, 31AY, 31AZ, 31BA, 31BB, 31BC, 31BD, 31BE, 31BF, 31BG, 31BH, 31BI, 31BJ, 31BK, 31BL, 31BM, 31BN, 31BO, 31BP, 31BQ, 31BR, 31BS, 31BT, 31BU, 31BV, 31BW, 31BX, 31BY, 31BZ, 31CA, 31CB, 31CC, 31CD, 31CE, 31CF, 31CG, 31CH, 31CI, 31CJ, 31CK, 31CL, 31CM, 31CN, 31CO, 31CP, 31CQ, 31CR, 31CS, 31CT, 31CU, 31CV, 31CW, 31CX, 31CY, 31CZ, 31DA, 31DB, 31DC, 31DD, 31DE, 31DF, 31DG, 31DH, 31DI, 31DJ, 31DK, 31DL, 31DM, 31DN, 31DO, 31DP, 31DQ, 31DR, 31DS, 31DT, 31DU, 31DV, 31DW, 31DX, 31DY, 31DZ, 31EA, 31EB, 31EC, 31ED, 31EE, 31EF, 31EG, 31EH, 31EI, 31EJ, 31EK, 31EL, 31EM, 31EN, 31EO, 31EP, 31EQ, 31ER, 31ES, 31ET, 31EU, 31EV, 31EW, 31EX, 31EY, 31EZ, 31FA, 31FB, 31FC, 31FD, 31FE, 31FF, 31FG, 31FH, 31FI, 31FJ, 31FK, 31FL, 31FM, 31FN, 31FO, 31FP, 31FQ, 31FR, 31FS, 31FT, 31FU, 31FV, 31FW, 31FX, 31FY, 31FZ, 31GA, 31GB, 31GC, 31GD, 31GE, 31GF, 31GG, 31GH, 31GI, 31GJ, 31GK, 31GL, 31GM, 31GN, 31GO, 31GP, 31GQ, 31GR, 31GS, 31GT, 31GU, 31GV, 31GW, 31GX, 31GY, 31GZ, 31HA, 31HB, 31HC, 31HD, 31HE, 31HF, 31HG, 31HH, 31HI, 31HJ, 31HK, 31HL, 31HM, 31HN, 31HO, 31HP, 31HQ, 31HR, 31HS, 31HT, 31HU, 31HV, 31HW, 31HX, 31HY, 31HZ, 31IA, 31IB, 31IC, 31ID, 31IE, 31IF, 31IG, 31IH, 31IJ, 31IK, 31IL, 31IM, 31IN, 31IO, 31IP, 31IQ, 31IR, 31IS, 31IT, 31IU, 31IV, 31IW, 31IX, 31IY, 31IZ, 31JA, 31JB, 31JC, 31JD, 31JE, 31JF, 31JG, 31JH, 31JI, 31JJ, 31JK, 31JL, 31JM, 31JN, 31JO, 31JP, 31JQ, 31JR, 31JS, 31JT, 31JU, 31JV, 31JW, 31JX, 31JY, 31JZ, 31KA, 31KB, 31KC, 31KD, 31KE, 31KF, 31KG, 31KH, 31KI, 31KJ, 31KK, 31KL, 31KM, 31KN, 31KO, 31KP, 31KQ, 31KR, 31KS, 31KT, 31KU, 31KV, 31KW, 31KX, 31KY, 31KZ, 31LA, 31LB, 31LC, 31LD, 31LE, 31LF, 31LG, 31LH, 31LI, 31LJ, 31LK, 31LL, 31LM, 31LN, 31LO, 31LP, 31LQ, 31LR, 31LS, 31LT, 31LU, 31LV, 31LW, 31LX, 31LY, 31LZ, 31MA, 31MB, 31MC, 31MD, 31ME, 31MF, 31MG, 31MH, 31MI, 31MJ, 31MK, 31ML, 31MN, 31MO, 31MP, 31MQ, 31MR, 31MS, 31MT, 31MU, 31MV, 31MW, 31MX, 31MY, 31MZ, 31NA, 31NB, 31NC, 31ND, 31NE, 31NF, 31NG, 31NH, 31NI, 31NJ, 31NK, 31NL, 31NM, 31NO, 31NP, 31NQ, 31NR, 31NS, 31NT, 31NU, 31NV, 31NW, 31NX, 31NY, 31NZ, 31OA, 31OB, 31OC, 31OD, 31OE, 31OF, 31OG, 31OH, 31OI, 31OJ, 31OK, 31OL, 31OM, 31ON, 31OO, 31OP, 31OQ, 31OR, 31OS, 31OT, 31OU, 31OV, 31OW, 31OX, 31OY, 31OZ, 31PA, 31PB, 31PC, 31PD, 31PE, 31PF, 31PG, 31PH, 31PI, 31PJ, 31PK, 31PL, 31PM, 31PN, 31PO, 31PP, 31PQ, 31PR, 31PS, 31PT, 31PU, 31PV, 31PW, 31PX, 31PY, 31PZ, 31QA, 31QB, 31QC, 31QD, 31QE, 31QF, 31QG, 31QH, 31QI, 31QJ, 31QK, 31QL, 31QM, 31QN, 31QO, 31QP, 31QQ, 31QR, 31QS, 31QT, 31QU, 31QV, 31QW, 31QX, 31QY, 31QZ, 31RA, 31RB, 31RC, 31RD, 31RE, 31RF, 31RG, 31RH, 31RI, 31RJ, 31RK, 31RL, 31RM, 31RN, 31RO, 31RP, 31RQ, 31RR, 31RS, 31RT, 31RU, 31RV, 31RW, 31RX, 31RY, 31RZ, 31SA, 31SB, 31SC, 31SD, 31SE, 31SF, 31SG, 31SH, 31SI, 31SJ, 31SK, 31SL, 31SM, 31SN, 31SO, 31SP, 31SQ, 31SR, 31SS, 31ST, 31SU, 31SV, 31SW, 31SX, 31SY, 31SZ, 31TA, 31TB, 31TC, 31TD, 31TE, 31TF, 31TG, 31TH, 31TI, 31TJ, 31TK, 31TL, 31TM, 31TN, 31TO, 31TP, 31TQ, 31TR, 31TS, 31TT, 31TU, 31TV, 31TW, 31TX, 31TY, 31TZ, 31UA, 31UB, 31UC, 31UD, 31UE, 31UF, 31UG, 31UH, 31UI, 31UJ, 31UK, 31UL, 31UM, 31UN, 31UO, 31UP, 31UQ, 31UR, 31US, 31UT, 31UU, 31UV, 31UW, 31UX, 31UY, 31UZ, 31VA, 31VB, 31VC, 31VD, 31VE, 31VF, 31VG, 31VH, 31VI, 31VJ, 31VK, 31VL, 31VM, 31VN, 31VO, 31VP, 31VQ, 31VR, 31VS, 31VT, 31VU, 31VV, 31VW, 31VX, 31VY, 31VZ, 31WA, 31WB, 31WC, 31WD, 31WE, 31WF, 31WG, 31WH, 31WI, 31WJ, 31WK, 31WL, 31WM, 31WN, 31WO, 31WP, 31WQ, 31WR, 31WS, 31WT, 31WU, 31WV, 31WW, 31WX, 31WY, 31WZ, 31XA, 31XB, 31XC, 31XD, 31XE, 31XF, 31XG, 31XH, 31XI, 31XJ, 31XK, 31XL, 31XM, 31XN, 31XO, 31XP, 31XQ, 31XR, 31XS, 31XT, 31XU, 31XV, 31XW, 31XX, 31XY, 31XZ, 31YA, 31YB, 31YC, 31YD, 31YE, 31YF, 31YG, 31YH, 31YI, 31YJ, 31YK, 31YL, 31YM, 31YN, 31YO, 31YP, 31YQ, 31YR, 31YS, 31YT, 31YU, 31YV, 31YW, 31YX, 31YY, 31YZ, 31ZA, 31ZB, 31ZC, 31ZD, 31ZE, 31ZF, 31ZG, 31ZH, 31ZI, 31ZJ, 31ZK, 31ZL, 31ZM, 31ZN, 31ZO, 31ZP, 31ZQ, 31ZR, 31ZS, 31ZT, 31ZU, 31ZV, 31ZW, 31ZX, 31ZY, 31ZZ, 31AA, 31AB, 31AC, 31AD, 31AE, 31AF, 31AG, 31AH, 31AI, 31AJ, 31AK, 31AL, 31AM, 31AN, 31AO, 31AP, 31AQ, 31AR, 31AS, 31AT, 31AU, 31AV, 31AW, 31AX, 31AY, 31AZ, 31BA, 31BB, 31BC, 31BD, 31BE, 31BF, 31BG, 31BH, 31BI, 31BJ, 31BK, 31BL, 31BM, 31BN, 31BO, 31BP, 31BQ, 31BR, 31BS, 31BT, 31BU, 31BV, 31BW, 31BX, 31BY, 31BZ, 31CA, 31CB, 31CC, 31CD, 31CE, 31CF, 31CG, 31CH, 31CI, 31CJ, 31CK, 31CL, 31CM, 31CN, 31CO, 31CP, 31CQ, 31CR, 31CS, 31CT, 31CU, 31CV, 31CW, 31CX, 31CY, 31CZ, 31DA, 31DB, 31DC, 31DD, 31DE, 31DF, 31DG, 31DH, 31DI, 31DJ, 31DK, 31DL, 31DM, 31DN, 31DO, 31DP, 31DQ, 31DR, 31DS, 31DT, 31DU, 31DV, 31DW, 31DX, 31DY, 31DZ, 31EA, 31EB, 31EC, 31ED, 31EE, 31EF, 31EG, 31EH, 31EI, 31EJ, 31EK, 31EL, 31EM, 31EN, 31EO, 31EP, 31EQ, 31ER, 31ES, 31ET, 31EU, 31EV, 31EW, 31EX, 31EY, 31EZ, 31FA, 31FB, 31FC, 31FD, 31FE, 31FF, 31FG, 31FH, 31FI, 31FJ, 31FK, 31FL, 31FM, 31FN, 31FO, 31FP, 31FQ, 31FR, 31FS, 31FT, 31FU, 31FV, 31FW, 31FX, 31FY, 31FZ, 31GA, 31GB, 31GC, 31GD, 31GE, 31GF, 31GG, 31GH, 31GI, 31GJ, 31GK, 31GL, 31GM, 31GN, 31GO, 31GP, 31GQ, 31GR, 31GS, 31GT, 31GU, 31GV, 31GW, 31GX, 31GY, 31GZ, 31HA, 31HB, 31HC, 31HD, 31HE, 31HF, 31HG, 31HH, 31HI, 31HJ, 31HK, 31HL, 31HM, 31HN, 31HO, 31HP, 31HQ, 31HR, 31HS, 31HT, 31HU, 31HV, 31HW, 31HX, 31HY, 31HZ, 31IA, 31IB, 31IC, 31ID, 31IE, 31IF, 31IG, 31IH, 31IJ, 31IK, 31IL, 31IM, 31IN, 31IO, 31IP, 31IQ, 31IR, 31IS, 31IT, 31IU, 31IV, 31IW, 31IX, 31IY, 31IZ, 31JA, 31JB, 31JC, 31JD, 31JE, 31JF, 31JG, 31JH, 31JI, 31JJ, 31JK, 31JL, 31JM, 31JN, 31JO, 31JP, 31JQ, 31JR, 31JS, 31JT, 31JU, 31JV, 31JW, 31JX, 31JY, 31JZ, 31KA, 31KB, 31KC, 31KD, 31KE, 31KF, 31KG, 31KH, 31KI, 31KJ, 31KK, 31KL, 31KM, 31KN, 31KO, 31KP, 31KQ, 31KR, 31KS, 31KT, 31KU, 31KV, 31KW, 31KX, 31KY, 31KZ, 31LA, 31LB, 31LC, 31LD, 31LE, 31LF, 31LG, 31LH, 31LI, 31LJ, 31LK, 31LM, 31LN, 31LO, 31LP, 31LQ, 31LR, 31LS, 31LT, 31LU, 31LV, 31LW, 31LX, 31LY, 31LZ, 31MA, 31MB, 31MC, 31MD, 31ME, 31MF, 31MG, 31MH, 31MI, 31MJ, 31MK, 31ML, 31MN, 31MO, 31MP, 31MQ, 31MR, 31MS, 31MT, 31MU, 31MV, 31MW, 31MX, 31MY, 31MZ, 31NA, 31NB, 31NC, 31ND, 31NE, 31NF, 31NG, 31NH, 31NI, 31NJ, 31NK, 31NL, 31NM, 31NO, 31NP, 31NQ, 31NR, 31NS, 31NT, 31NU, 31NV, 31NW, 31NX, 31NY, 31NZ, 31OA, 31OB, 31OC, 31OD, 31OE, 31OF, 31OG, 31OH, 31OI, 31OJ, 31OK, 31OL, 31OM, 31ON, 31OO, 31OP, 31OQ, 31OR, 31OS, 31OT, 31OU, 31OV, 31OW, 31OX, 31OY, 31OZ, 31PA, 31PB, 31PC, 31PD, 31PE, 31PF, 31PG, 31PH, 31PI, 31PJ, 31PK, 31PL, 31PM, 31PN, 31PO, 31PP, 31PQ, 31PR, 31PS, 31PT, 31PU, 31PV, 31PW, 31PX, 31PY, 31PZ, 31QA, 31QB, 31QC, 31QD, 31QE, 31QF, 31QG, 31QH, 31QI, 31QJ, 31QK, 31QL, 31QM, 31QN, 31QO, 31QP, 31QQ, 31QR, 31QS, 31QT, 31QU, 31QV, 31QW, 31QX, 31QY, 31QZ, 31RA, 31RB, 31RC, 31RD, 31RE, 31RF, 31RG, 31RH, 31RI, 31RJ, 31RK, 31RL, 31RM, 31RN, 31RO, 31RP, 31RQ, 31RS, 31RT, 31RU, 31RV, 31RW, 31RX, 31RY, 31RZ, 31SA, 31SB, 31SC, 31SD, 31SE, 31SF, 31SG, 31SH, 31SI, 31SJ, 31SK, 31SL, 31SM, 31SN, 31SO, 31SP, 31SQ, 31SR, 31SS, 31ST, 31SU, 31SV, 31SW, 31SX, 31SY, 31SZ, 31TA, 31TB, 31TC, 31TD, 31TE, 31TF, 31TG, 31TH, 31TI, 31TJ, 31TK, 31TL, 31TM, 31TN, 31TO, 31TP, 31TQ, 31TR, 31TS, 31TT, 31TU, 31TV, 31TW, 31TX, 31TY, 31TZ, 31UA, 31UB, 31UC, 31UD, 31UE, 31UF, 31UG, 31UH, 31UI, 31UJ, 31UK, 31UL, 31UM, 31UN, 31UO, 31UP, 31UQ, 31UR, 31US, 31UT, 31UU, 31UV, 31UW, 31UX, 31UY, 31UZ, 31VA, 31VB, 31VC, 31VD, 31VE, 31VF, 31VG, 31VH, 31VI, 31VJ, 31VK, 31VL, 31VM, 31VN, 31VO, 31VP, 31VQ, 31VR, 31VS, 31VT, 31VU, 31VV, 31VW, 31VX, 31VY, 31VZ, 31WA, 31WB, 31WC, 31WD, 31WE, 31WF, 31WG, 31WH, 31WI, 31WJ, 31WK, 31WL, 31WM, 31WN, 31WO, 31WP, 31WQ, 31WR, 31WS, 31WT, 31WU, 31WV, 31WW, 31WX, 31WY, 31WZ, 31XA, 31XB, 31XC, 31XD, 31XE, 31XF, 31XG, 31XH, 31XI, 31XJ, 31XK, 31XL, 31XM, 31XN, 31XO, 31XP, 31XQ, 31XR, 31XS, 31XT, 31XU, 31XV, 31XW, 31XX, 31XY, 31XZ, 31YA, 31YB, 31YC, 31YD, 31YE, 31YF, 31YG, 31YH, 31YI, 31YJ, 31YK, 31YL, 31YM, 31YN, 31YO, 31YP, 31YQ, 31YR, 31YS, 31YT, 31YU, 31YV, 31YW, 31YX, 31YY, 31YZ, 31ZA, 31ZB, 31ZC, 31ZD, 31ZE, 31ZF, 31ZG, 31ZH, 31ZI, 31ZJ, 31ZK, 31ZL, 31ZM, 31ZN, 31ZO, 31ZP, 31ZQ, 31ZR, 31ZS, 31ZT, 31ZU, 31ZV, 31ZW, 31ZX, 31ZY, 31ZZ, 31AA, 31AB, 31AC, 31AD, 31AE, 31AF, 31AG, 31AH, 31AI, 31AJ, 31AK, 31AL, 31AM, 31AN, 31AO, 31AP, 31AQ, 31AR, 31AS, 31AT, 31AU, 31AV, 31AW, 31AX, 31AY, 31AZ, 31BA, 31BB, 31BC, 31BD, 31BE, 31BF, 31BG, 31BH, 31BI, 31BJ, 31BK, 31BL, 31BM, 31BN, 31BO, 31BP, 31BQ, 31BR, 31BS, 31BT, 31BU, 31BV, 31BW, 31BX, 31BY, 31BZ, 31CA, 31CB, 31CC, 31CD, 31CE, 31CF, 31CG, 31CH, 31CI, 31CJ, 31CK, 31CL, 31CM, 31CN, 31CO, 31CP, 31CQ, 31CR, 31CS, 31CT, 31CU, 31CV, 31CW, 31CX, 31CY, 31CZ, 31DA, 31DB, 31DC, 31DD, 31DE, 31DF, 31DG, 31DH, 31DI, 31DJ, 31DK, 31DL, 31DM, 31DN, 31DO, 31DP, 31DQ, 31DR, 31DS, 31DT, 31DU, 31DV, 31DW, 31DX, 31DY, 31DZ, 31EA, 31EB, 31EC, 31ED, 31EE, 31EF, 31EG, 31EH, 31EI, 31EJ, 31EK, 31EL, 31EM, 31EN, 31EO, 31EP, 31EQ, 31ER, 31ES, 31ET, 31EU, 31EV, 31EW, 31EX, 31EY, 31EZ, 31FA, 31FB, 31FC, 31FD, 31FE, 31FF, 31FG, 31FH, 31FI, 31FJ, 31FK, 31FL, 31FM, 31FN, 31FO, 31FP, 31FQ, 31FR, 31FS, 31FT, 31FU, 31FV, 31FW, 31FX, 31FY, 31FZ, 31GA, 31GB, 31GC, 31GD, 31GE, 31GF, 31GG, 31GH, 31GI, 31GJ, 31GK, 31GL, 31GM, 31GN, 31GO, 31GP, 31GQ, 31GR, 31GS, 31GT, 31GU, 31GV, 31GW, 31GX, 31GY, 31GZ, 31HA, 31HB, 31HC, 31HD, 31HE, 31HF, 31HG, 31HH, 31HI, 31HJ, 31HK, 31HL, 31HM, 31HN, 31HO, 31HP, 31HQ, 31HR, 31HS, 31HT, 31HU, 31HV, 31HW, 31HX, 31HY, 31HZ, 31IA, 31IB, 31IC, 31ID, 31IE, 31IF, 31IG, 31IH, 31IJ, 31IK, 31IL, 31IM, 31IN, 31IO, 31IP, 31IQ, 31IR, 31IS, 31IT, 31IU, 31IV, 31IW, 31IX, 31IY, 31IZ, 31JA, 31JB, 31JC, 31JD, 31JE, 31JF, 31JG, 31JH, 31JI, 31JJ, 31JK, 31JL, 31JM, 31JN, 31JO, 31JP, 31JQ, 31JR, 31JS, 31JT, 31JU, 31JV, 31JW, 31JX, 31JY, 31JZ, 31KA, 31KB, 31KC, 31KD, 31KE, 31KF, 31KG, 31KH, 31KI, 31KJ, 31KK, 31KL, 31KM, 31KN, 31KO, 31KP, 31KQ, 31KR, 31KS, 31KT, 31KU, 31KV, 31KW, 31KX, 31KY, 31KZ, 31LA, 31LB, 31LC, 31LD, 31LE, 31LF, 31LG, 31LH, 31LI, 31LJ, 31LK, 31LM, 31LN, 31LO, 31LP, 31LQ, 31LR, 31LS, 31LT, 31LU, 31LV, 31LW, 31LX, 31LY, 31LZ, 31MA, 31MB, 31MC, 31MD, 31ME, 31MF, 31MG, 31MH, 31MI, 31MJ, 31MK, 31ML, 31MN, 31MO, 31MP, 31MQ, 31MR, 31MS, 31MT, 31MU, 31MV, 31MW, 31MX, 31MY, 31MZ, 31NA, 31NB, 31NC, 31ND, 31NE, 31NF, 31NG, 31NH, 31NI, 31NJ, 31NK, 31NL

8

7

6

5

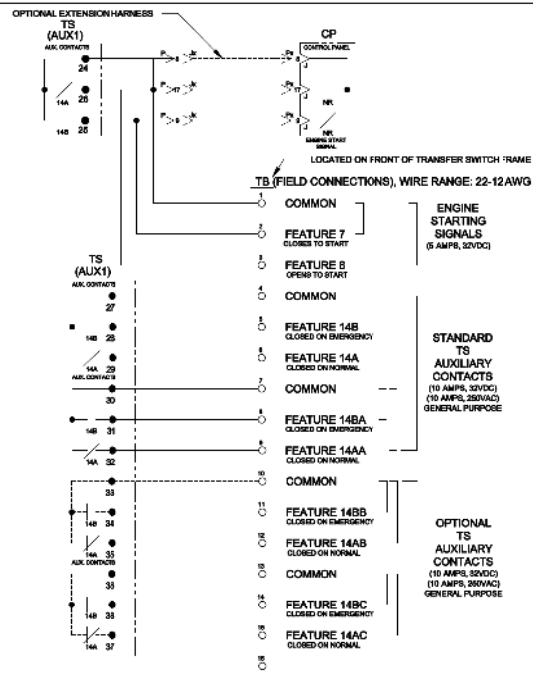
4

3

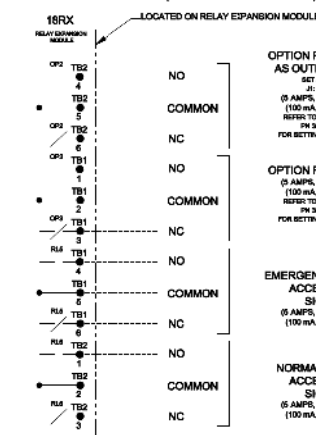
2

1

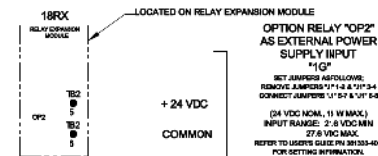
FIELD CONNECTIONS



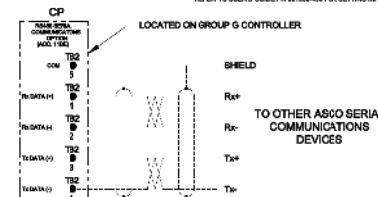
OPTIONAL ACCESSORY 18RX (RELAY EXPANSION MODULE)



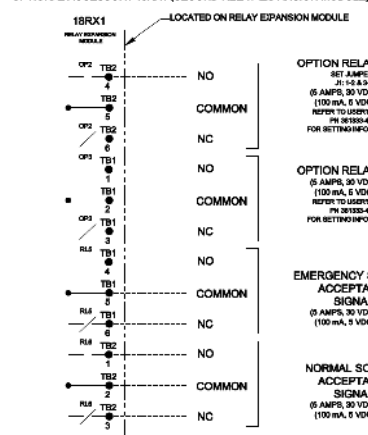
"OP2" OPTIONAL USES



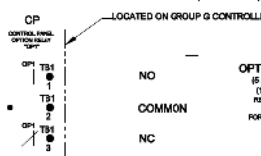
RS485 SERIAL COMMUNICATIONS OPTION



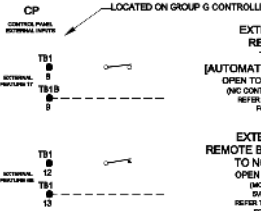
OPTIONAL ACCESSORY 18RX1 (SECOND RELAY EXPANSION MODULE)



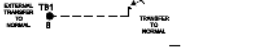
CONTROLLER OPTION RELAY "CP1" (STANDARD)



CONTROLLER REMOTE CONTROL FEATURES



EXTERNAL MANUAL TRANSFER REMOTE TRANSFER TO NORMAL OR EMERGENCY (NON-AUTOMATIC TRANSFER TYPE ONLY)



| | | | | |
|---|-------|-----|-----|--------|
| G | 27520 | TR | SK | 042519 |
| F | 27521 | TR | SK | 101819 |
| E | 28513 | TR | SK | 041015 |
| D | 28442 | AE | SK | |
| C | 24772 | SDH | SKH | 47474 |
| B | 24635 | AE | SK | 251074 |
| A | 24669 | SK | SK | 152519 |
| | 24635 | AE | SK | 152519 |
| | 18546 | | | |

PROJECT NAME: _____

WIRING: _____

300 SERIES (H&S) (H&S) 3PH 800-1200 AMPS

"H" FRAME, GROUP G CONTROLS

DATE: _____ BY: _____

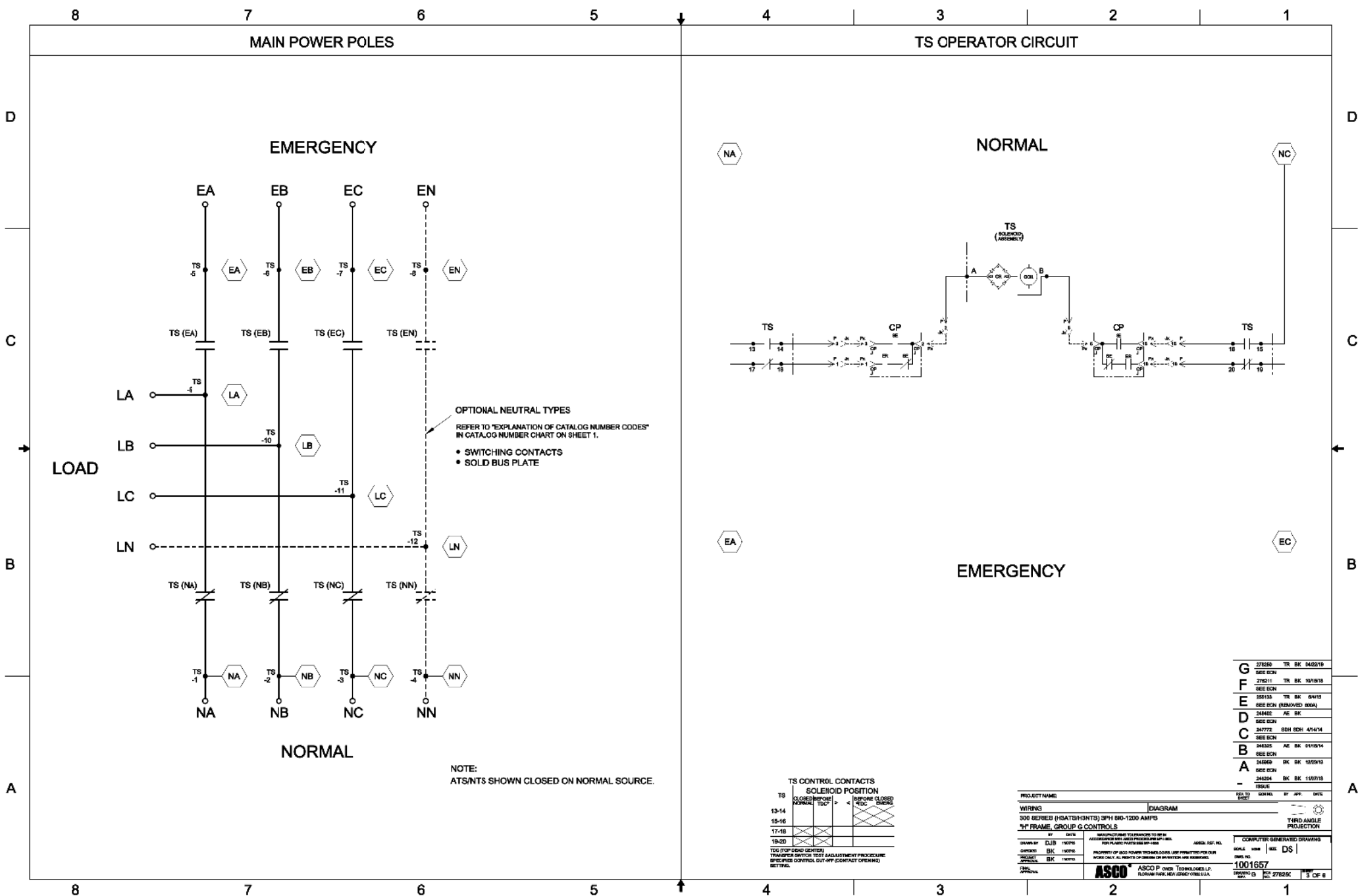
CHECKED: _____

DESIGNED: _____

ASCO P.O. BOX 278296 FLORHAM PARK, NJ 07931-8296

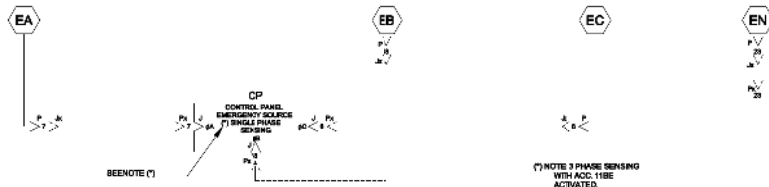
1001657

2 OF 8



EMERGENCY SOURCE CIRCUITS

EMERGENCY



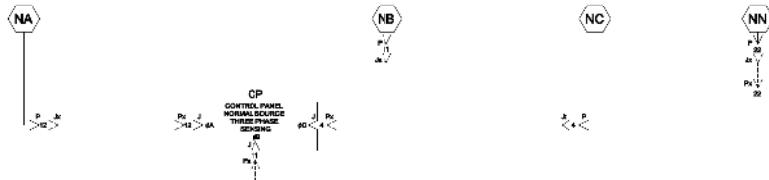
LOAD TERMINAL CIRCUITS

LOAD

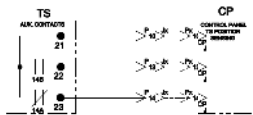


NORMAL SOURCE CIRCUITS

NORMAL

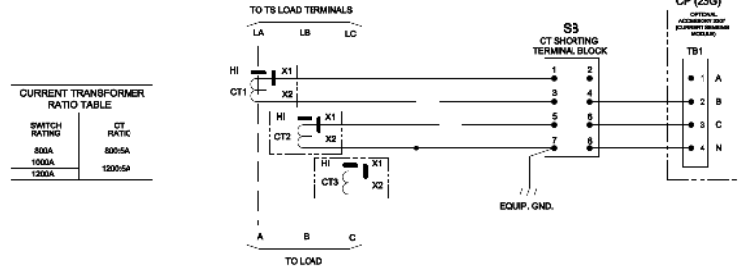


CONTROL CIRCUITS



ADDITIONAL CIRCUITS

OPTIONAL ACCESSORY 23GB (LOAD CURRENT METERING)



| | | | | |
|---|--------|-----|-----|----------|
| G | 276200 | TR | SK | 0425/19 |
| F | 276211 | TR | SK | 10/18/19 |
| E | 285124 | TR | SK | 04/10/19 |
| D | 284402 | AE | SK | |
| C | 247772 | SDH | SKH | 4/14/14 |
| B | 246335 | AE | SK | 01/10/14 |
| A | 246669 | SK | SK | 10/20/13 |
| | 246334 | SK | SK | 10/20/13 |
| | 185646 | | | |

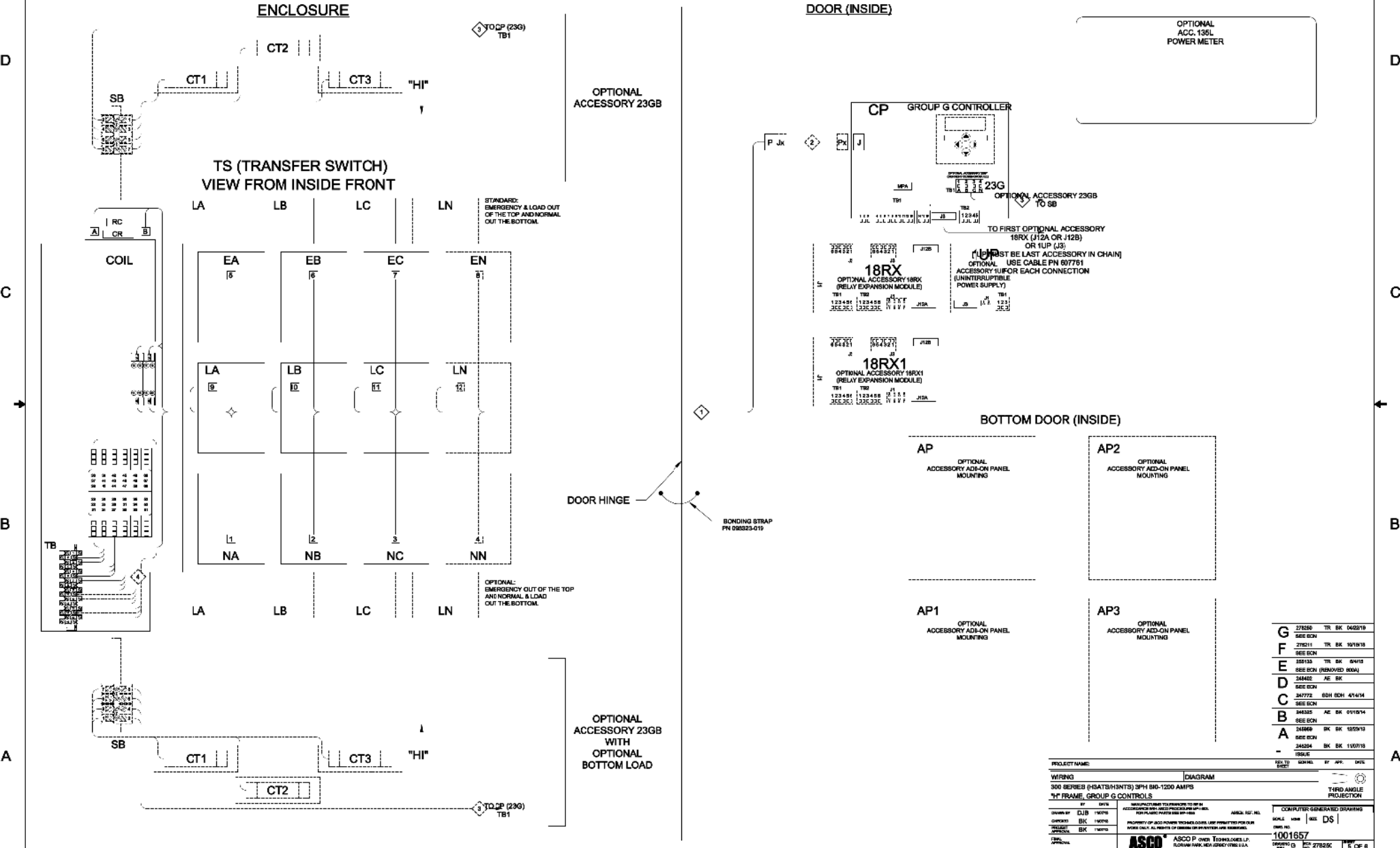
| | | | | | |
|--|---------|---|----|--------|------|
| PROJECT NAME | REL TO | DATE | BY | APP | DATE |
| WIRING | DIAGRAM | | | | |
| 300 SERIES (H4ATS/H4NTS) SPH 800-1200 AMPS | | | | | |
| "H" FRAME, GROUP G CONTROLS | | | | | |
| BY | DATE | MANUFACTURED TO PERFORM TO THE | | | |
| DESIGNED BY | DATE | ASCO P-ONE TECHNOLOGIES, INC. | | | |
| CHECKED BY | DATE | PROPERTY OF ASCO P-ONE TECHNOLOGIES, INC. NOT TO BE REPRODUCED OR TRANSMITTED IN ANY FORM OR BY ANY MEANS, ELECTRONIC OR MECHANICAL, WITHOUT PERMISSION IN WRITING FROM ASCO P-ONE TECHNOLOGIES, INC. | | | |
| APPROVED BY | DATE | ASCO P-ONE TECHNOLOGIES, INC. | | | |
| DRAWING NO. | | 1001657 | | REV. 1 | |
| DRAWING DATE | | 27/02/20 | | 4 OF 6 | |

PHYSICAL DIAGRAM

ENCLOSURE

DOOR (INSIDE)

TS (TRANSFER SWITCH) VIEW FROM INSIDE FRONT



| | | | | |
|---|-------|----|----|--------|
| G | 27620 | TR | SK | 042519 |
| F | 27621 | TR | SK | 101818 |
| E | 38513 | TR | SK | 041015 |
| D | 38513 | TR | SK | 041015 |
| C | 38513 | TR | SK | 041015 |
| B | 38513 | TR | SK | 041015 |
| A | 38513 | TR | SK | 041015 |

| | | | |
|--------------------------------|--|-------------|----------|
| PROJECT NAME: | 300 SERIES (H4ATB/H4NTS) SPH 800-1200 AMPS | DATE: | 07/10/10 |
| WIRING: | "H" FRAME, GROUP G CONTROLS | BY: | DS |
| DESIGNED BY: | DS | CHECKED BY: | DS |
| APPROVED BY: | DS | DATE: | 07/10/10 |
| SCALE: | 1" = 12" | SCALE: | 1" = 12" |
| COMPUTER GENERATED DRAWING: | 1001657 | SCALE: | 1" = 12" |
| ASCO P OVER TECHNOLOGIES, L.P. | FLORHAM PARK, NEW JERSEY 07931-1100 | SCALE: | 1" = 12" |

5 ↓

[illegible]

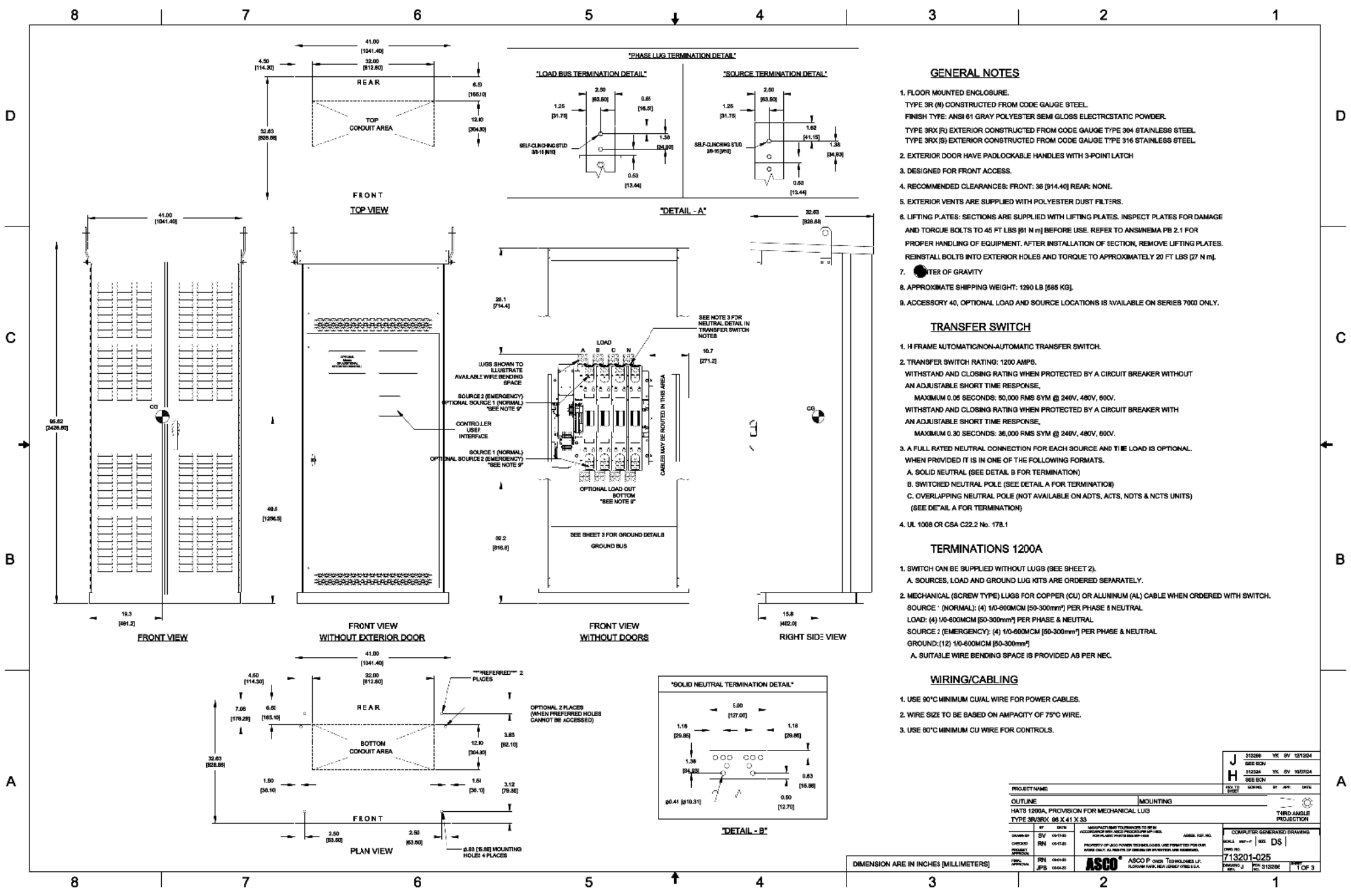
| HARNESS LOCATOR | | DISCONNECT PULL HERE | 7 |
|-----------------|---------------------------------|-------------------------|-----|
| WIRE | HARNESS 300020-000 | | |
| NO. | PLUG OPTIONAL EXTENSION HARNESS | CLR | AMG |
| 1 | P4-1,Pin-1 | | 18 |
| 2 | P4-2,Pin-2 | | |
| 3 | P4-3,Pin-3 | | |
| 4 | P4-4,Pin-4 | | |
| 5 | P4-5,Pin-5 | | |
| 6 | P4-6,Pin-6 | | |
| 7 | P4-7,Pin-7 | | |
| 8 | P4-8,Pin-8 | | |
| 9 | P4-9,Pin-9 | | |
| 10 | P4-10,Pin-10 | | |
| 11 | P4-11,Pin-11 | | |
| 12 | P4-12,Pin-12 | | |
| 13 | P4-13,Pin-13 | | |
| 14 | P4-14,Pin-14 | | |
| 15 | P4-15,Pin-15 | | |
| 16 | P4-16,Pin-16 | | |
| 17 | P4-17,Pin-17 | | |
| 18 | P4-18,Pin-18 | | |
| 19 | P4-19,Pin-19 | | |
| 20 | P4-20,Pin-20 | | |
| 21 | P4-21,Pin-21 | | |
| 22 | P4-22,Pin-22 | | |
| 23 | P4-23,Pin-23 | | |
| 24 | P4-24,Pin-24 | | |
| REMOVE WIRES | | | |
| | | | |
| ADD WIRES | | | |
| | | | |
| | | | |

[illegible][illegible]

| WIRE No. | ADDITIONAL WIRES | CLR | AW |
|-------------|------------------|-----|-----|
| | | | 1/8 |

| | | | | |
|----------|-------------------------|-----|-----|----------|
| G | 278260 | TR | BK | 04/22/18 |
| | SEE ECRN | | | |
| F | 278211 | TR | BK | 10/18/18 |
| | SEE ECRN | | | |
| E | 355133 | TR | BK | 6/4/15 |
| | SEE ECRN (REMOVED 800A) | | | |
| D | 248402 | AE | BK | |
| | SEE ECRN | | | |
| C | 247772 | SDH | SDH | 4/14/14 |
| | SEE ECRN | | | |
| B | 246325 | AE | BK | 01/15/14 |
| | SEE ECRN | | | |
| A | 246666 | BK | BK | 12/29/13 |
| | SEE ECRN | | | |
| - | 245254 | BK | BK | 11/07/13 |
| | 189AUE | | | |

| | | | | | | | |
|---|---------|--|---|----------|----|------|------|
| PROJECT NAME: | DRAWING | | REV. TO | REVISION | BY | APP. | DATE |
| WIRING | | | | | | | |
| GROUP SERIES (HSATS/HINTS) 3PH BKG-1200 AMPS | | | | | | | |
| "I" FRAME, 300 G. CONTROLS | | | TYPED AND PROJECTION | | | | |
| DESIGNED BY | BY | | GENERAL | | | | |
| CHECKED BY | BY | | ASCO | | | | |
| APPROVED BY | BY | | ASCO | | | | |
| <p>FOR INFORMATION OF THE USER, THE FOLLOWING INFORMATION IS FURNISHED:</p> <p>PROPERTY OF AND NOT TO BE REPRODUCED OR TRANSMITTED IN ANY FORM OR BY ANY MEANS, ELECTRONIC OR MECHANICAL, WITHOUT PERMISSION IN WRITING FROM THE COMPANY.</p> | | | <p>COMPUTER GENERATED DRAWING</p> <p>SCALE: 1/8" = 1' 0"</p> <p>DATE: 10/15/87</p> <p>BY: 27252</p> <p>OF 8</p> | | | | |



GENERAL NOTES

- FLOOR MOUNTED ENCLOSURE.
TYPE 3R (R) CONSTRUCTED FROM CODE GAUGE STEEL.
FINISH TYPE: ANSI 61 GRAY POLYESTER SEMI GLOSS ELECTROSTATIC POWDER.
TYPE 3RX (R) EXTERIOR CONSTRUCTED FROM CODE GAUGE TYPE 304 STAINLESS STEEL.
TYPE 3RX (S) EXTERIOR CONSTRUCTED FROM CODE GAUGE TYPE 316 STAINLESS STEEL.
- EXTERIOR DOOR HAVE PADLOCKABLE HANDLES WITH 3-POINT LATCH.
- DESIGNED FOR FRONT ACCESS.
- RECOMMENDED CLEARANCES: FRONT: 36 [914.4] REAR: NONE.
- EXTERIOR VENTS ARE SUPPLIED WITH POLYESTER DUST FILTERS.
- LIFTING PLATES: SECTIONS ARE SUPPLIED WITH LIFTING PLATES. INSPECT PLATES FOR DAMAGE AND TORQUE BOLTS TO 45 FT LBS [61 N m] BEFORE USE. REFER TO ANSINEMA PB 2.1 FOR PROPER HANDLING OF EQUIPMENT. AFTER INSTALLATION OF SECTION, REMOVE LIFTING PLATES. REINSTALL BOLTS INTO EXTERIOR HOLES AND TORQUE TO APPROXIMATELY 20 FT LBS [27 N m].
- CENTER OF GRAVITY
- APPROXIMATE SHIPPING WEIGHT: 1290 LB [585 KG].
- ACCESSORY 40, OPTIONAL LOAD AND SOURCE LOCATIONS IS AVAILABLE ON SERIES 7000 ONLY.

TRANSFER SWITCH

- H FRAME AUTOMATIC/ON-AUTOMATIC TRANSFER SWITCH.
- TRANSFER SWITCH RATING: 1200 AMPS.
WITHSTAND AND CLOSING RATING WHEN PROTECTED BY A CIRCUIT BREAKER WITHOUT AN ADJUSTABLE SHORT TIME RESPONSE,
MAXIMUM 0.05 SECONDS: 50,000 RMS SYM @ 240V, 480V, 600V.
WITHSTAND AND CLOSING RATING WHEN PROTECTED BY A CIRCUIT BREAKER WITH AN ADJUSTABLE SHORT TIME RESPONSE,
MAXIMUM 0.30 SECONDS: 36,000 RMS SYM @ 240V, 480V, 600V.
- A FULL RATED NEUTRAL CONNECTION FOR EACH SOURCE AND THE LOAD IS OPTIONAL. WHEN PROVIDED IT IS IN ONE OF THE FOLLOWING FORMATS.
A. SOLID NEUTRAL (SEE DETAIL B FOR TERMINATION)
B. SWITCHED NEUTRAL POLE (SEE DETAIL A FOR TERMINATION)
C. OVERLAPPING NEUTRAL POLE (NOT AVAILABLE ON ADTS, ACTS, NCTS & NCTS UNITS) (SEE DETAIL A FOR TERMINATION)
- UL 1008 OR CSA C22.2 No. 178.1

TERMINATIONS 1200A

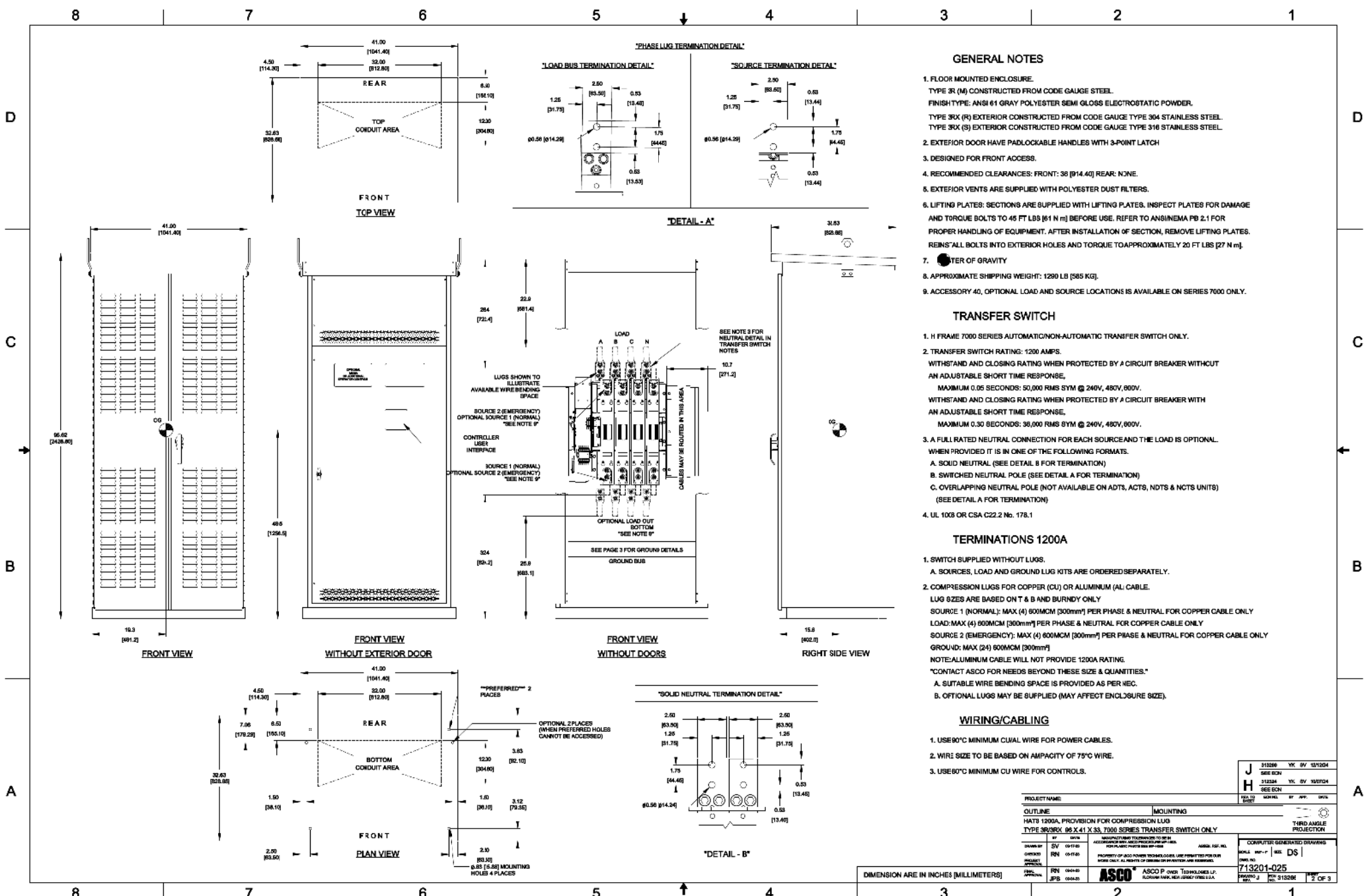
- SWITCH CAN BE SUPPLIED WITHOUT LUGS (SEE SHEET 2).
A. SOURCES, LOAD AND GROUND LUG KITS ARE ORDERED SEPARATELY.
- MECHANICAL (SCREW TYPE) LUGS FOR COPPER (CU) OR ALUMINUM (AL) CABLE WHEN ORDERED WITH SWITCH.
SOURCE : (NORMAL): (4) 1/0-600MCM [50-300mm²] PER PHASE & NEUTRAL
LOAD: (4) 1/0-600MCM [50-300mm²] PER PHASE & NEUTRAL
SOURCE : (EMERGENCY): (4) 1/0-600MCM [50-300mm²] PER PHASE & NEUTRAL
GROUND: (12) 1/0-600MCM [50-300mm²]
A. SUITABLE WIRE BENDING SPACE IS PROVIDED AS PER NEC.

WIRING/CABLING

- USE 90°C MINIMUM CUAL WIRE FOR POWER CABLES.
- WIRE SIZE TO BE BASED ON AMPACITY OF 75°C WIRE.
- USE 80°C MINIMUM CU WIRE FOR CONTROLS.

| | | | | |
|--|----------|----------|--|----------|
| J H | 312586 | YK | SV | 12/2024 |
| | DATE BOM | | | |
| | 312584 | YK | SV | 10/2024 |
| | DATE BOM | | | |
| PROJECT NAME: _____ | | | | |
| OUTLINE: _____ | | | | |
| HATS 1200A, PROVISION FOR MECHANICAL LUG | | | | |
| TYPE 3R/3RX 86 X 41 X 33 | | | | |
| BY | DATE | REVISION | DESCRIPTION | APPROVED |
| SV | 04/15/24 | 01 | MANUFACTURING TOLERANCES TO BE IN ACCORDANCE WITH ASME Y14.5-2018 | |
| RV | 04/15/24 | 02 | FORWARD THIS SHEET TO THE CUSTOMER | |
| RV | 04/15/24 | 03 | PROPERTY OF ASCO POWER TECHNOLOGIES, USE IS LIMITED TO THE PROJECT ONLY. ALL RIGHTS OF DESIGN OR INVENTION ARE RESERVED. | |
| RV | 04/15/24 | 04 | ASCO P. OVER TECHNOLOGIES LP, FLOORING P&P, NEW JERSEY 07003-0001 | |
| RV | 04/15/24 | 05 | | |
| COMPUTER GENERATED DRAWINGS | | | | |
| SCALE: 1/4" = 1'-0" DS | | | | |
| DWG. NO. 713201-025 | | | | |
| REV. 1 OF 3 | | | | |

DIMENSION ARE IN INCHES [MILLIMETERS]



GENERAL NOTES

- FLOOR MOUNTED ENCLOSURE.
TYPE 3R (M) CONSTRUCTED FROM CODE GAUGE STEEL.
FINISH TYPE: ANSI 61 GRAY POLYESTER SEMI GLOSS ELECTROSTATIC POWDER.
TYPE 3RX (R) EXTERIOR CONSTRUCTED FROM CODE GAUGE TYPE 304 STAINLESS STEEL.
TYPE 3RX (S) EXTERIOR CONSTRUCTED FROM CODE GAUGE TYPE 316 STAINLESS STEEL.
- EXTERIOR DOOR HAVE PADLOCKABLE HANDLES WITH 3-POINT LATCH
- DESIGNED FOR FRONT ACCESS.
- RECOMMENDED CLEARANCES: FRONT: 36 [914.4] REAR: NONE.
- EXTERIOR VENTS ARE SUPPLIED WITH POLYESTER DUST FILTERS.
- LIFTING PLATES: SECTIONS ARE SUPPLIED WITH LIFTING PLATES. INSPECT PLATES FOR DAMAGE AND TORQUE BOLTS TO 45 FT LBS [61 N m] BEFORE USE. REFER TO ANSINEMA PB 2.1 FOR PROPER HANDLING OF EQUIPMENT. AFTER INSTALLATION OF SECTION, REMOVE LIFTING PLATES. REINSTALL BOLTS INTO EXTERIOR HOLES AND TORQUE TO APPROXIMATELY 20 FT LBS [27 N m].
- CENTER OF GRAVITY
- APPROXIMATE SHIPPING WEIGHT: 1290 LB [585 KG].
- ACCESSORY 40, OPTIONAL LOAD AND SOURCE LOCATIONS IS AVAILABLE ON SERIES 7000 ONLY.

TRANSFER SWITCH

- H FRAME 7000 SERIES AUTOMATIC/NON-AUTOMATIC TRANSFER SWITCH ONLY.
- TRANSFER SWITCH RATING: 1200 AMPS.
WITHSTAND AND CLOSING RATING WHEN PROTECTED BY A CIRCUIT BREAKER WITHOUT AN ADJUSTABLE SHORT TIME RESPONSE.
MAXIMUM 0.05 SECONDS: 50,000 RMS SYM @ 240V, 480V, 800V.
WITHSTAND AND CLOSING RATING WHEN PROTECTED BY A CIRCUIT BREAKER WITH AN ADJUSTABLE SHORT TIME RESPONSE.
MAXIMUM 0.30 SECONDS: 36,000 RMS SYM @ 240V, 480V, 800V.
- A FULL RATED NEUTRAL CONNECTION FOR EACH SOURCE AND THE LOAD IS OPTIONAL. WHEN PROVIDED IT IS IN ONE OF THE FOLLOWING FORMATS.
A. SOLID NEUTRAL (SEE DETAIL B FOR TERMINATION)
B. SWITCHED NEUTRAL POLE (SEE DETAIL A FOR TERMINATION)
C. OVERLAPPING NEUTRAL POLE (NOT AVAILABLE ON ADTS, ACTS, NDTS & NCTS UNITS) (SEE DETAIL A FOR TERMINATION)
- UL 1008 OR CSA C22.2 No. 178.1

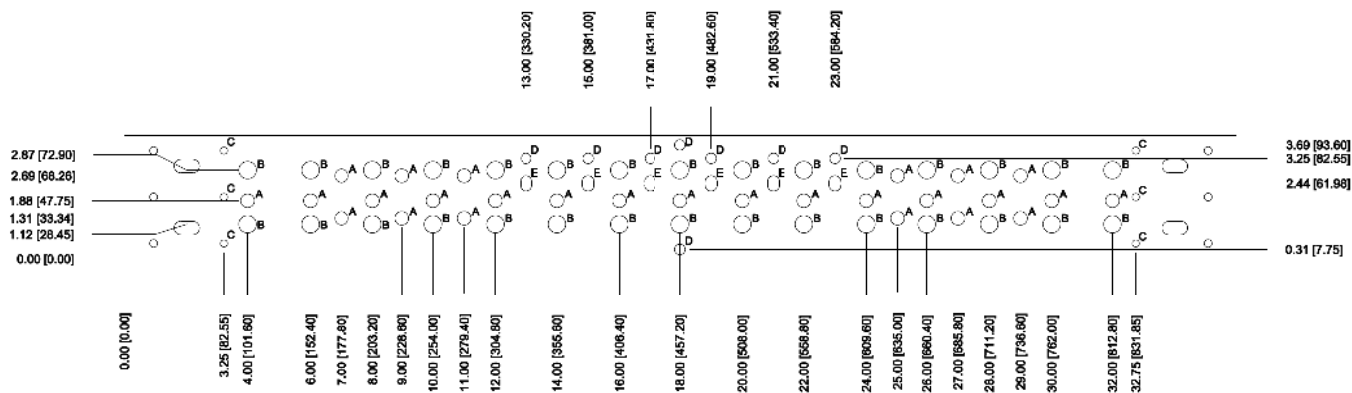
TERMINATIONS 1200A

- SWITCH SUPPLIED WITHOUT LUGS.
A. SOURCES, LOAD AND GROUND LUG KITS ARE ORDERED SEPARATELY.
- COMPRESSION LUGS FOR COPPER (CU) OR ALUMINUM (AL) CABLE.
LUG SIZES ARE BASED ON T & B AND BURNDY ONLY
SOURCE 1 (NORMAL): MAX (4) 800MCM [300mm²] PER PHASE & NEUTRAL FOR COPPER CABLE ONLY
LOAD: MAX (4) 800MCM [300mm²] PER PHASE & NEUTRAL FOR COPPER CABLE ONLY
SOURCE 2 (EMERGENCY): MAX (4) 800MCM [300mm²] PER PHASE & NEUTRAL FOR COPPER CABLE ONLY
GROUND: MAX (24) 600MCM [300mm²]
NOTE: ALUMINUM CABLE WILL NOT PROVIDE 1200A RATING.
"CONTACT ASCO FOR NEEDS BEYOND THESE SIZE & QUANTITIES."
A. SUITABLE WIRE BENDING SPACE IS PROVIDED AS PER NEC.
B. OPTIONAL LUGS MAY BE SUPPLIED (MAY AFFECT ENCLOSURE SIZE).

WIRING/CABLING

- USE 90°C MINIMUM CUAL WIRE FOR POWER CABLES.
- WIRE SIZE TO BE BASED ON AMPACITY OF 75°C WIRE.
- USE 90°C MINIMUM CU WIRE FOR CONTROLS.

| | | | |
|--|----|---|--|
| PROJECT NAME: _____ | | MOUNTING: _____ | |
| OUTLINE | | | |
| HATS 1200A, PROVISION FOR COMPRESSION LUG | | | |
| TYPE 3R/3RX 86 X 41 X 33, 7000 SERIES TRANSFER SWITCH ONLY | | | |
| DATE BY | SV | 04/14/18 | MANUFACTURED TO SPECIFICATIONS OF THE USER. FOR VENDOR'S USE ONLY. NOT FOR FIELD USE. |
| DATE BY | SV | 04/14/18 | PROPERTY OF ASCO POWER TECHNOLOGIES. USE PERMITTED FOR YOUR WORK ONLY. ALL RIGHTS OF DESIGN OR INVENTION ARE RESERVED. |
| DATE BY | SV | 04/14/18 | PROPERTY OF ASCO POWER TECHNOLOGIES. USE PERMITTED FOR YOUR WORK ONLY. ALL RIGHTS OF DESIGN OR INVENTION ARE RESERVED. |
| DIMENSION ARE IN INCHES [MILLIMETERS] | | ASCO P. OVER TECHNOLOGIES LP. FLOORING, WELD, REPAIR, ETC. U.S.A. | |
| 713201-025 | | 713201-025 | |
| 2 OF 3 | | 2 OF 3 | |



| HOLE DATA | |
|-----------|--|
| E | 0.375 [9.525] WIDE X 0.50 [12.70] SLOT |
| D | 0.340 [8.636] DIA. |
| C | 0.228 [5.791] DIA. |
| B | 0.562 [14.275] DIA. |
| A | 0.437 [11.098] DIA. |

| | | | | | | | | | | | |
|---------------------------------------|--|------------|--|----------------------------|--|---|--|-------------------------|--|----------------------------|--|
| DIMENSION ARE IN INCHES [MILLIMETERS] | | HATS 1200A | | GROUND TERMINATION DETAILS | | MANUFACTURING TOLERANCES TO BE IN ACCORDANCE WITH ASCO PROCEDURE MP-4-003. FOR PLASTIC PARTS SEE MP-4-005. | | ASSEM. REF. NO. | | COMPUTER GENERATED DRAWING | |
| DRAWN BY | | SV | | 03-17-23 | | PROPERTY OF ASCO POWER TECHNOLOGIES. USE PERMITTED FOR OUR WORK ONLY. ALL RIGHTS OF DESIGN OR INVENTION ARE RESERVED. | | DWG. NO. | | 713201-025 | |
| CHECKED | | RN | | 03-17-23 | | ASCOPower Technologies, L.P. FLORHAM PARK, NEW JERSEY 07932 U.S.A. | | SCALE 1/4" = 1" SIZE BS | | DRAWING J | |
| PROJECT APPROVAL | | RN | | 06-04-23 | | ECN NO. 313268 | | BY | | APP. | |
| FINAL APPROVAL | | JPB | | 09-04-23 | | DATE | | REV. TO SHEET | | SHEET 3 OF 3 | |

| | | | | |
|----------------------------|---------|----|----|----------|
| J | 313268 | YK | SV | 12/12/24 |
| | SEE ECN | | | |
| H | 312324 | YK | SV | 10/07/24 |
| | SEE ECN | | | |
| THIRD ANGLE PROJECTION | | | | |
| COMPUTER GENERATED DRAWING | | | | |
| SCALE 1/4" = 1" SIZE BS | | | | |
| DWG. NO. 713201-025 | | | | |
| DRAWING J | | | | |
| ECN NO. 313268 | | | | |
| SHEET 3 OF 3 | | | | |